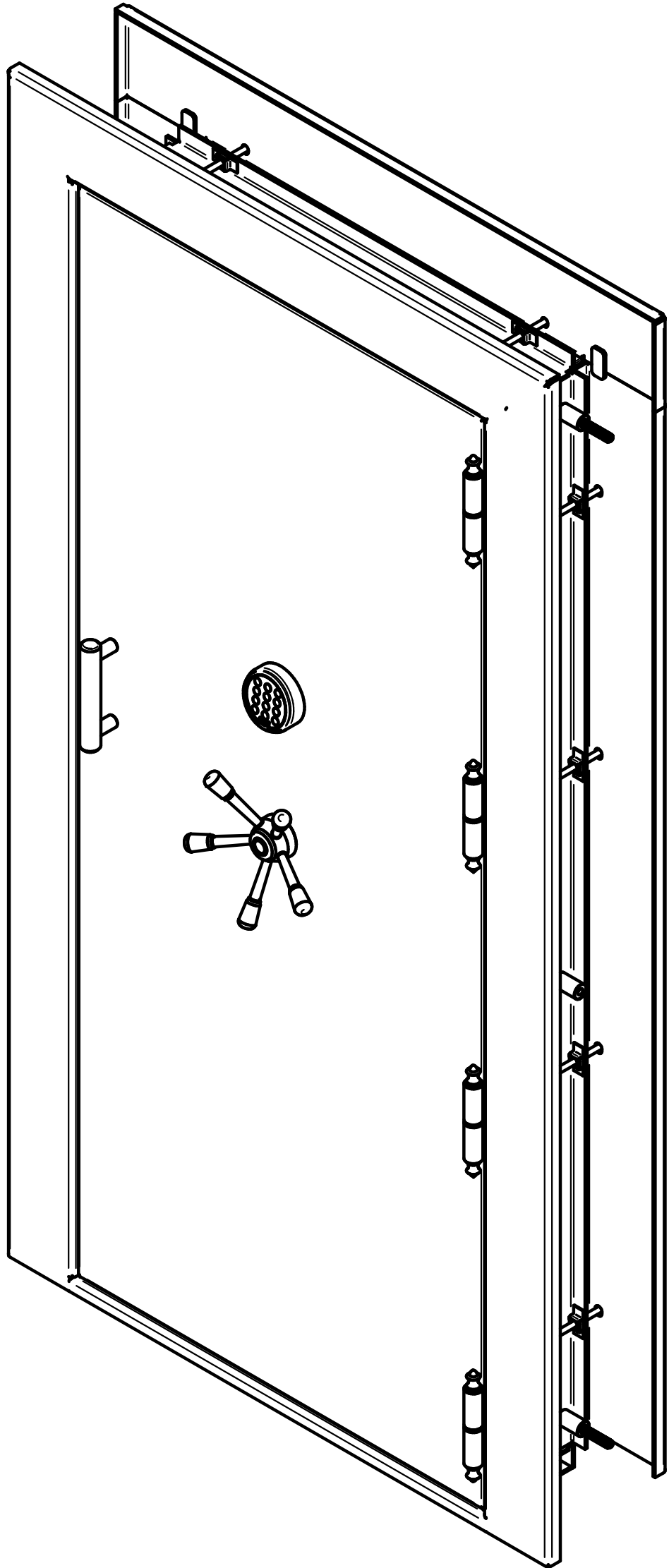


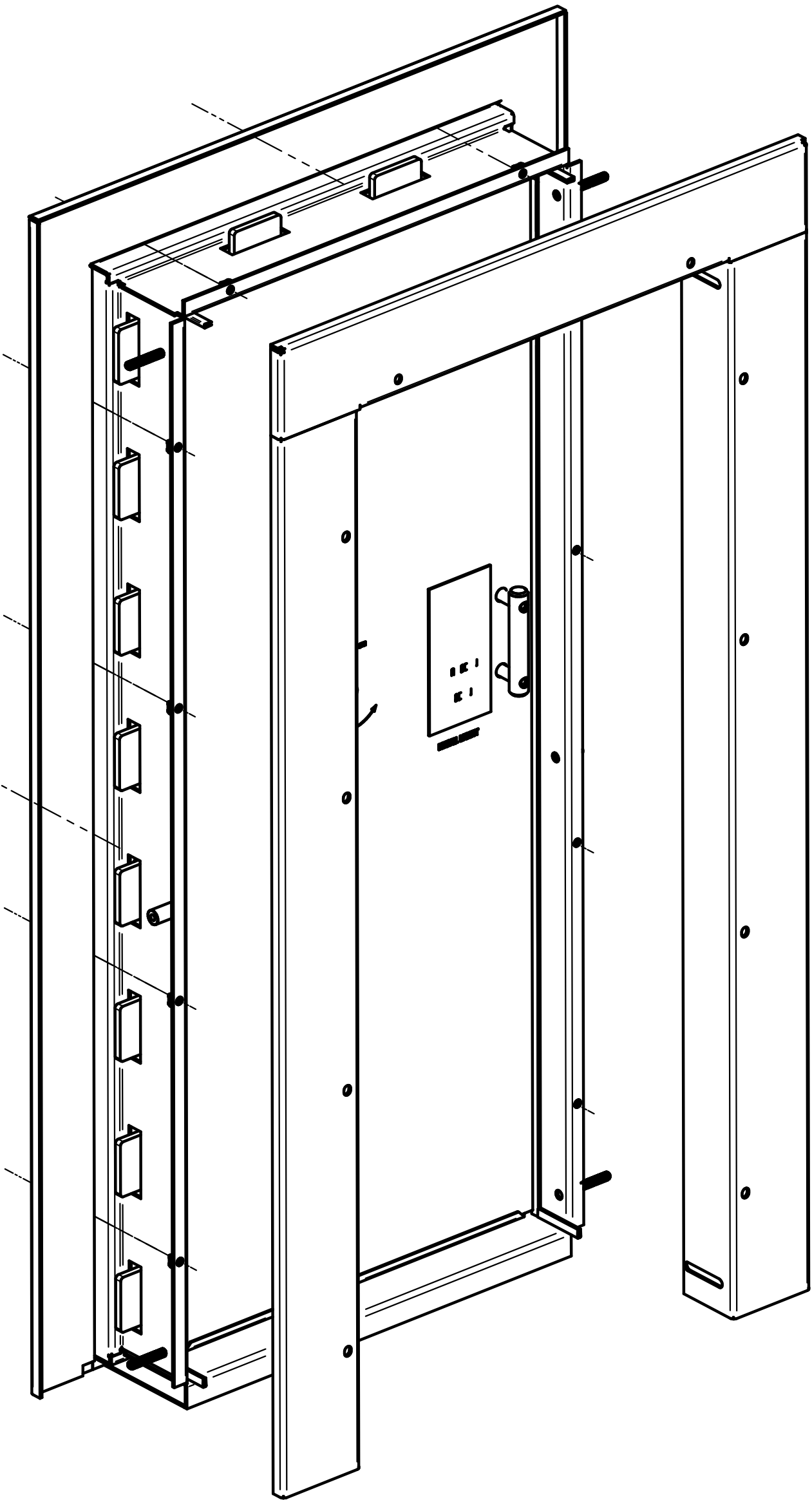
"THE BEAST" DELUXE OUTSWING Vault Door by Liberty Safe

Shown: Left Hand Outswing



Front

4 Piece Clamshell Design



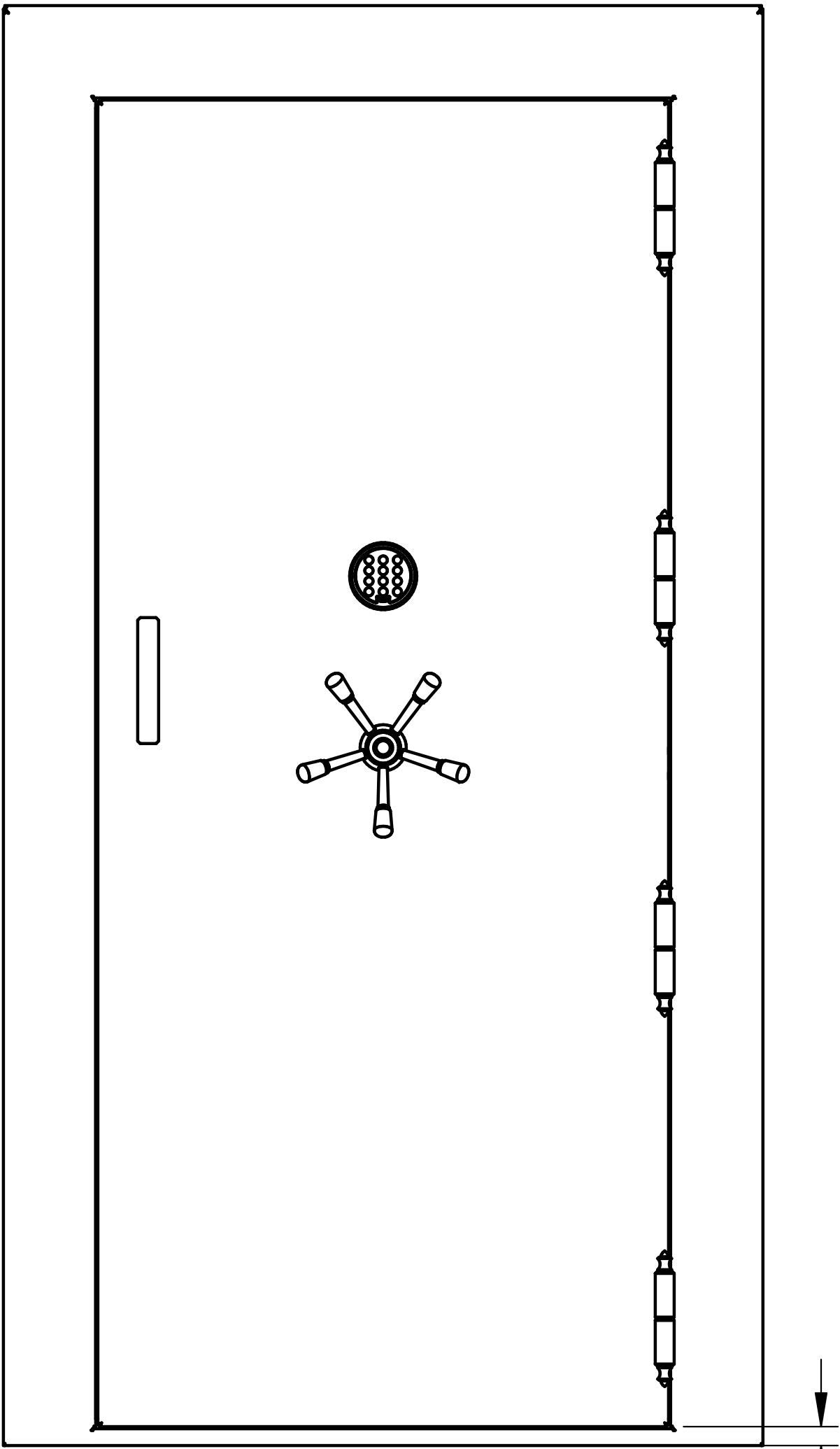
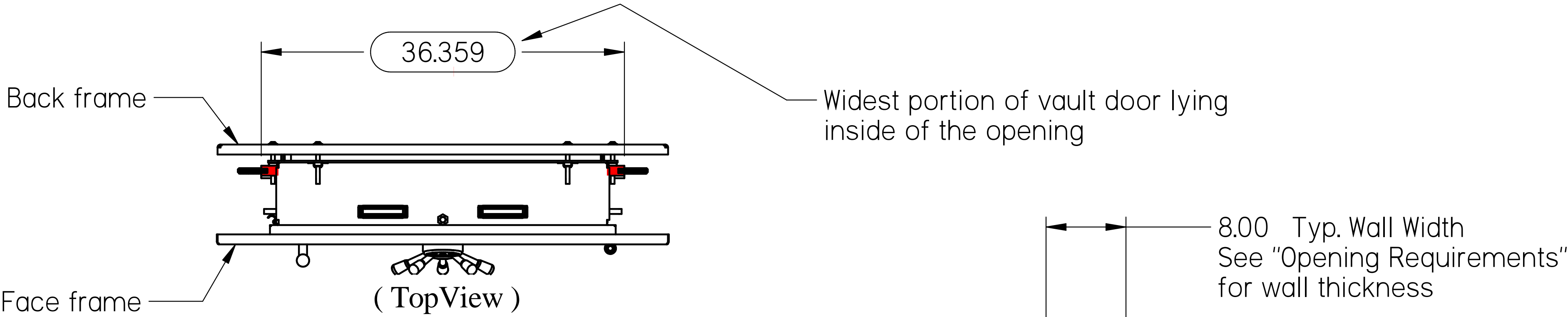
Back



All information contained on this document is the sole property of Liberty Safe & Security. Any alteration or reproduction by any method is strictly forbidden without written authorization from Liberty Safe & Security, Inc.		NAME	DATE	LIBERTY SAFE & SECURITY PRODUCTS		
	DRAWN	ryand	11/29/22			
	CHECKED			TITLE DELUXE OUTSWING		
	ENG APPR					
	MGR APPR					
UNLESS OTHERWISE SPECIFIED DIMENSIONS ARE IN INCHES ANGLES ±1.0° 2 PL ±0.02 3 PL ±0.010				SIZE D	Rev_2022-11-29	
				FILE NAME: VDOUT-XXX-18F_Specs_2022-11-29.dft		
				SCALE: 1:2	WEIGHT:	SHEET 1 OF 5

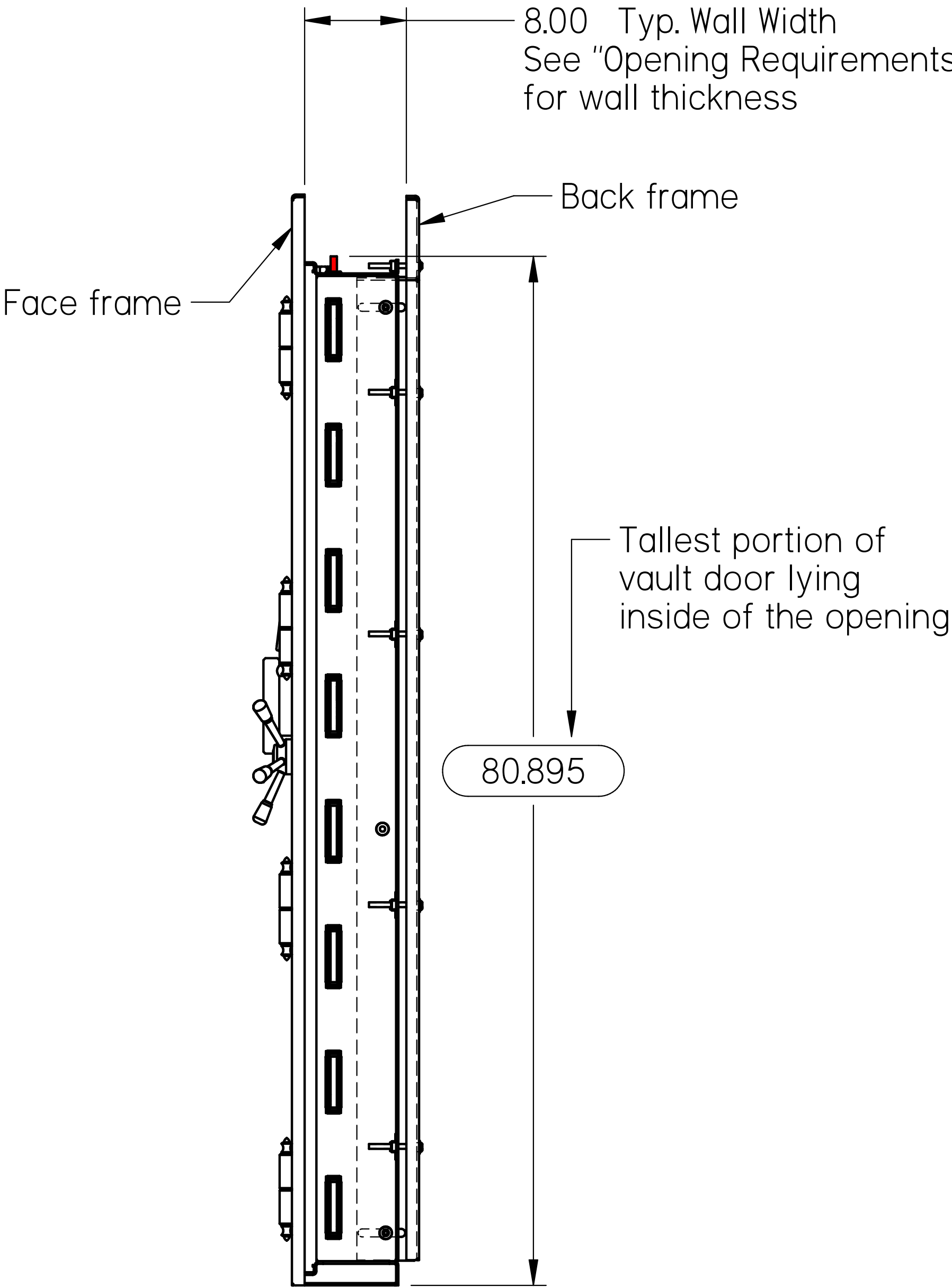
Clearances

Shown: Left Hand Outswing
Clearances are the same for Right Hand Outswing



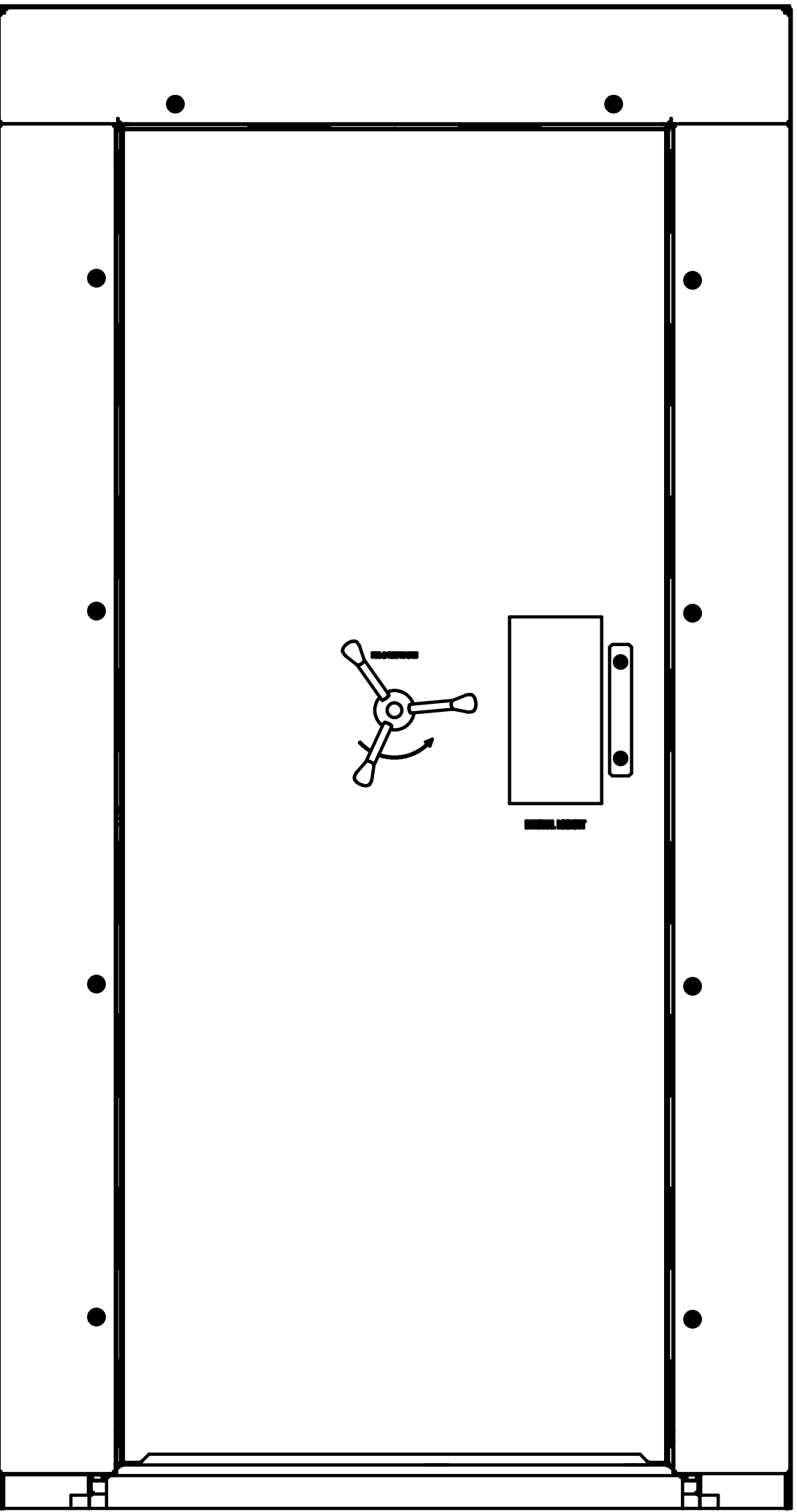
(Front View)

1.125
Door to Floor Clearance



(Side View)

1.875
Threshold Height



(Back View)

All information contained on this document is the sole property of Liberty Safe & Security.

Any alteration or reproduction by any method is strictly forbidden without written authorization from Liberty Safe & Security, Inc.

DRAWN	NAME	DATE
CHECKED	ryand	11/29/22
ENG APPR		
MGR APPR		

UNLESS OTHERWISE SPECIFIED DIMENSIONS ARE IN INCHES ANGLES ±1.0° 2 PL ±0.02 3 PL ±0.010	
--	--

LIBERTY
SAFE

LIBERTY SAFE
& SECURITY PRODUCTS

DELUXE OUTSWING

Rev_2022-11-29

FILE NAME: VDOUT-XXX-18F_Specs_2022-11-29.dft

SCALE: 1/8 WEIGHT: SHEET 2 OF 5

Dimensions are the same for Right Hand Outswing

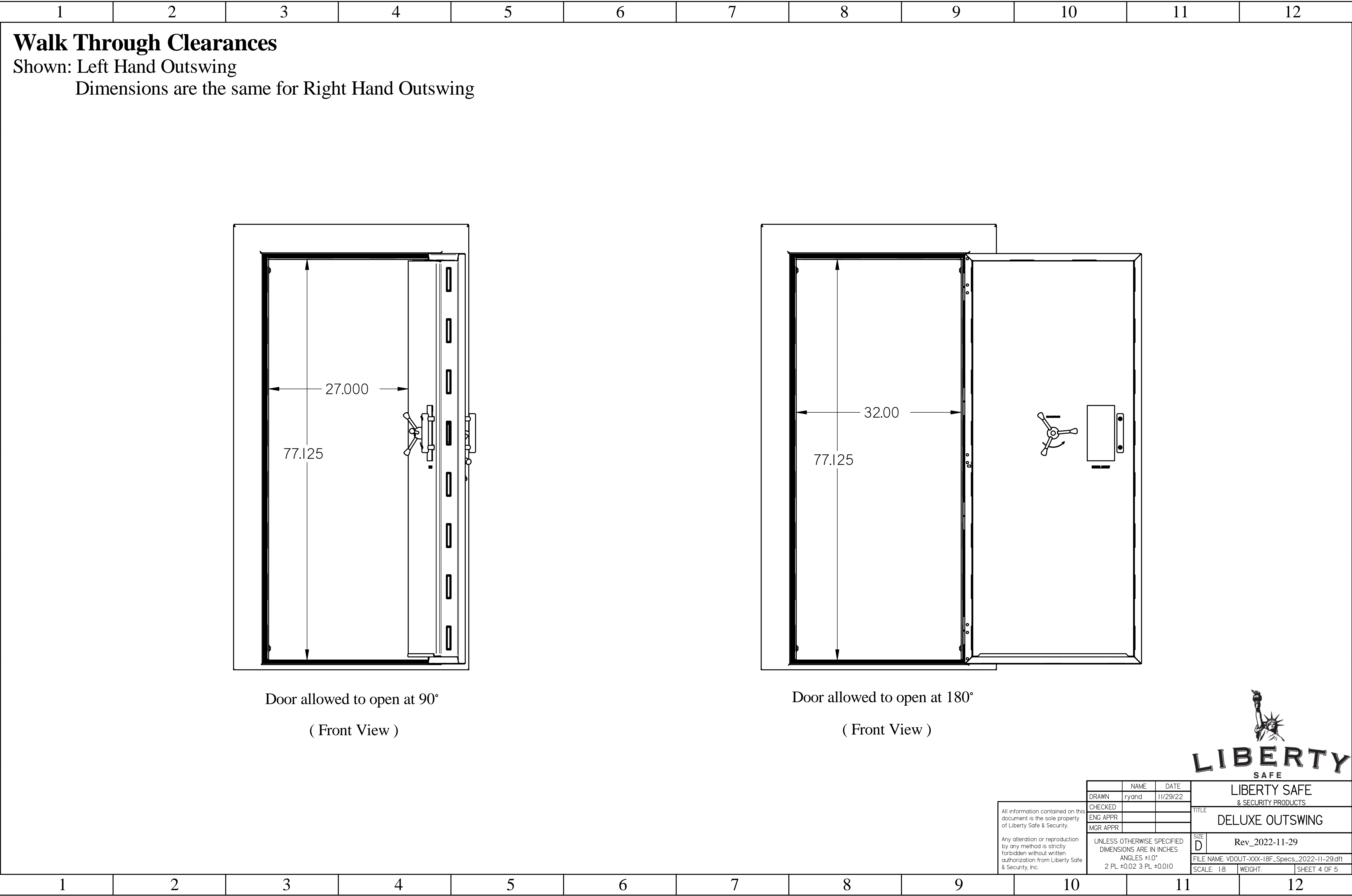
Technical drawing of a rectangular frame. The overall dimensions are 45.250 (width) and 85.750 (height). The inner dimensions are 34.250 (width) and 79.250 (height). The drawing shows a double-line border, indicating a frame or a thick border.

Technical drawing of a rectangular plate with the following dimensions and features:

- Overall width: 45.125
- Overall height: 83.625
- Inner width (between vertical lines): 31.875
- Inner height (between horizontal lines): 77.125
- Four vertical lines are spaced evenly across the width, with the innermost lines defining the 31.875 width.
- Four horizontal lines are spaced evenly across the height, with the innermost lines defining the 77.125 height.
- Small circles (holes) are located at the intersections of the vertical and horizontal lines.



	NAME	DATE	LIBERTY SAFE & SECURITY PRODUCTS	
DRAWN	ryand	11/29/22		
CHECKED			TITLE DELUXE OUTSWING	
ENG APPR				
MGR APPR				
UNLESS OTHERWISE SPECIFIED DIMENSIONS ARE IN INCHES ANGLES ±10° 2 PL ±0.02 3 PL ±0.010			SIZE D	Rev_2022-11-29
			FILE NAME: VDOUT-XXX-18F_Specs_2022-11-29.dft	
			SCALE: 1/8	WEIGHT:

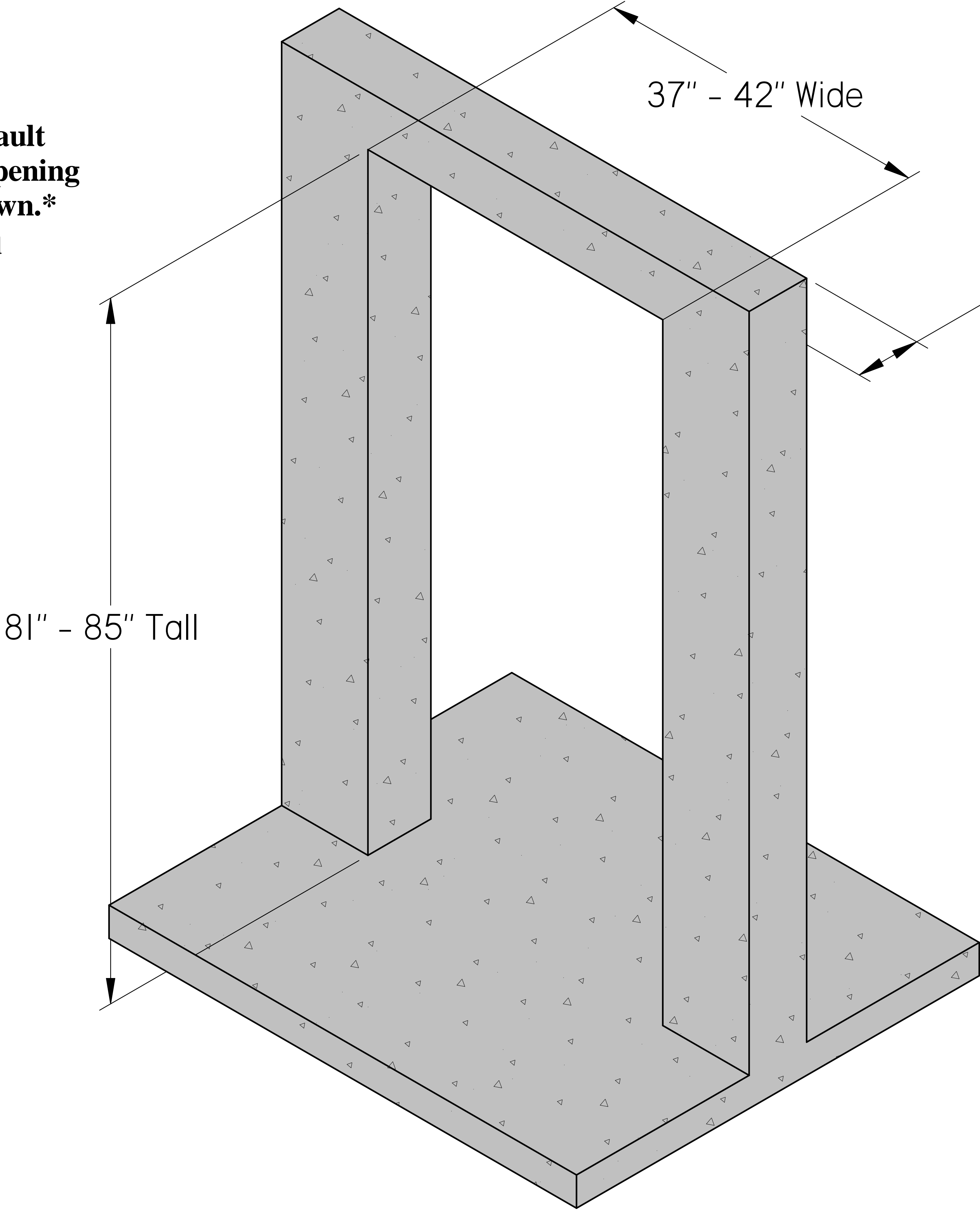


Opening Requirements

Shown: Rough opening requirements for the STANDARD DELUXE OUTSWING

The DELUXE OUTSWING vault door will accommodate any opening that is between the values shown.*

*These values may vary slightly based on the squareness of the opening.



7"- 9" Wall Thickness**

**Special orders can be made for 10", 12" or 14" wall thicknesses.

Ordering Guide	
How thick is your wall?	What to order
7-9"	8" - Standard
9-11"	10"
11-13"	12"
13-15"	14"



All information contained on this document is the sole property of Liberty Safe & Security.		NAME	DATE	LIBERTY SAFE & SECURITY PRODUCTS		
	DRAWN	ryand	11/29/22			
	CHECKED			TITLE DELUXE OUTSWING		
	ENG APPR					
MGR APPR						
Any alteration or reproduction by any method is strictly forbidden without written authorization from Liberty Safe & Security, Inc.	UNLESS OTHERWISE SPECIFIED DIMENSIONS ARE IN INCHES ANGLES ±1.0° 2 PL ±0.02 3 PL ±0.010			SIZE	Rev_2022-11-29	
				FILE NAME: VDOUT-XXX-18F_Specs_2022-11-29.dft		
				SCALE 1:80	WEIGHT:	SHEET 5 OF 5