



# NVS16-1U4K1 Network Streaming Decoder

Quick Start Guide V.1.00

## Table Of Contents

### Getting Started

- A. Description and Features **1**
- B. Specifications **1**
- C. Rear panel Identification **2**

### Device Setup

- A. Connecting to the Local Network **3**
- B. Adding IP Cameras/ Devices **3**

### Display Tour

- A. Display Tour Setup **4**

### Appendices

- A. FAQ **5**

### 1A. Description and Features

The NVS16-1U4K1 is a network streaming decoder, supporting up to 16 IP channels up to 12MP. It is compatible with ONVIF or other network devices that support RTSP streaming protocol.

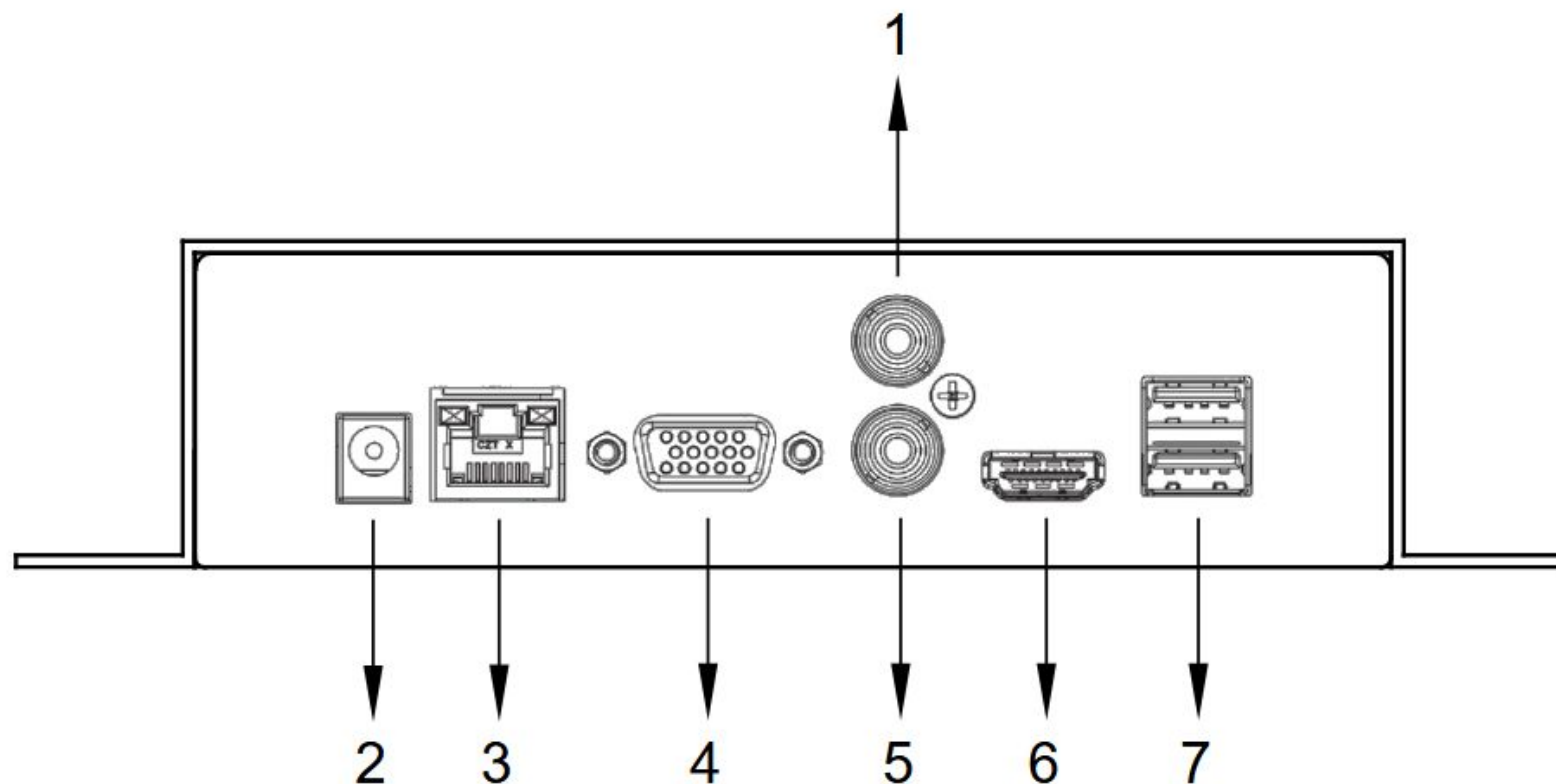
This device is purpose is to stream network devices to a local display. It is recommended to have a local NVR or other network storage for device management as well as to record and store the IP camera recordings.

IP devices should be set up prior to adding to the NVS16-1U4K1.

### 1B. Specifications

Max IP Channels	16 Channels
Throughput	Incoming: 144 Mbps
	Outgoing: 72 Mbps
Video Compression	Smart H.265+; H.265; Smart H.264+; H.264; MJPEG
Resolution Support	12 MP; 8 MP; 6 MP; 5 MP; 4 MP; 3MP; 1080p; 720p; 960p; D1; CIF ;QCIF
Local Interface	1 × VGA, 1 × HDMI
Display Resolution	HDMI: 3840 × 2160; 1920 × 1080; 1280 × 1024; 1280 × 720
	VGA: 1920 × 1080; 1280 × 1024; 1280 × 720
Display Decode	1-channel 12 MP@30 fps; 1-channel 8 MP@30 fps; 2-channel 6 MP@30 fps; 2-channel 5MP@30 fps; 3-channel 4 MP@30 fps; 6-channel 1080p@30 fps
Display Split	1/4/8/9/16

## 1C. Rear Panel Identification



1 Audio out, RCA Connector

3 Network Port

5 Audio in, RCA Connector

7 USB Ports

2 Power Input

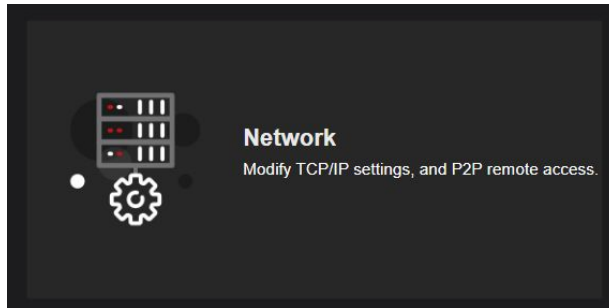
4 VGA Port

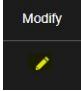
6 HDMI Port

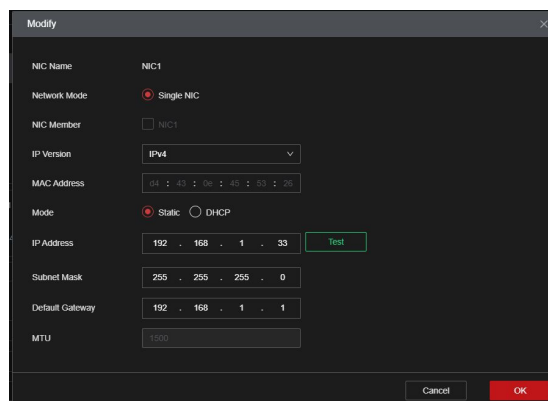
## 2A. Connecting to the local network

**Prior to the Setup:** Ensure that the NVS16 has network connection using an ethernet cable connected to a router/ local network. Plug in a mouse and monitor to access the local GUI. Configuring IP cameras on a Local Area Network requires a computer. We also recommend using the Config Tool. The setup steps will be the same on the local and web UI.

- Right click on the mouse and select **Main Menu**
- Select **Settings> Network**:

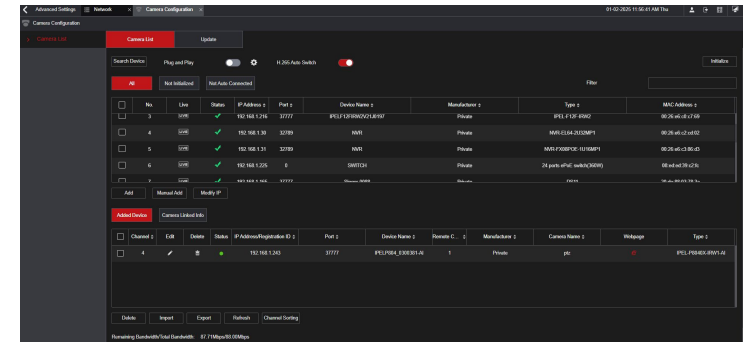


- Under the **TCP/IP** section, click “Modify” and select the check box for **DHCP if not already selected**. Click **Apply** then  when finished.
- You may select **Static** once the unit acquires a new IP address, then click “OK” to save. You may have to reboot the device while on DHCP mode to acquire a new IP from the local network.

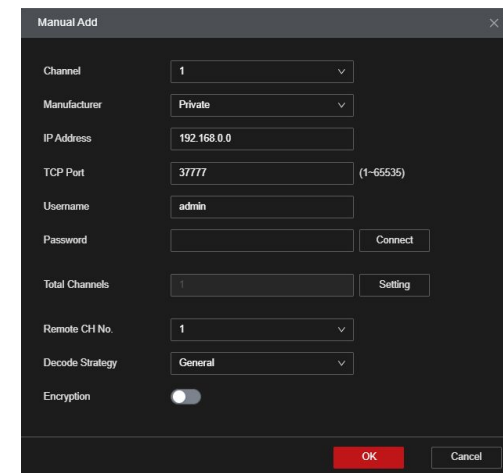


## 2B. Adding IP cameras/ devices


- On the **Main Menu**, click on **Settings > Camera Configuration**
- The bottom table indicates cameras already connected to the NVS16. Clicking “**Search Device**” will perform a network scan for IC Realtime/ ONVIF devices available to add. Select on a device and click “**Add**” to connect a device to the NVS16.



- Click “**Manual Add**” without selecting a device to manual input the information such as the IP address, Manufacturer (Protocol) Type, Port numbers and login credentials.
  - For IC Realtime/ IC Home devices, select the Manufacturer (Protocol) Type to **Private**.
  - To add devices via **RTSP**, select **Custom** on the Manufacturer (Protocol) Type




### 3A: Display Tour Setup:

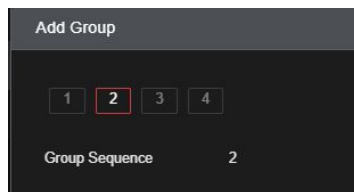
1. Right Click and click Main Menu and then click on **Settings > System Operation > Tour Setting**
2. Under **Tour** **Setting**, check the **Enable**  box.

Then, confirm your setting change by clicking on "OK" on the bottom right of the screen.

3. You will want to decide what kind of view you want to display. By default, every possible view and channel group is enabled. This means that View 1, 4, 8, etc. are enabled as soon as tour mode is enabled. it will rotate between one camera displaying at a time, until it's cycled through all of the cameras in View 1, and then it will move on to the next view, which is View 4, then View 8, and so on.
  - a. **Example:** If you just want a 4-view grid rotating on the monitor/TV, then you will want to click on the drop-down arrow and go through each Live Layout view option, and uncheck or delete every split view group, except for the cameras that are displaying on View 4.

Select the split view you want to configure by selecting it under the **Live View** dropdown or click **Add** to add a new channel group.

4. Click on the **Pencil** icon (  ) under **Operation** to edit a channel group/ split view. This configures what channels occupy the split view group.

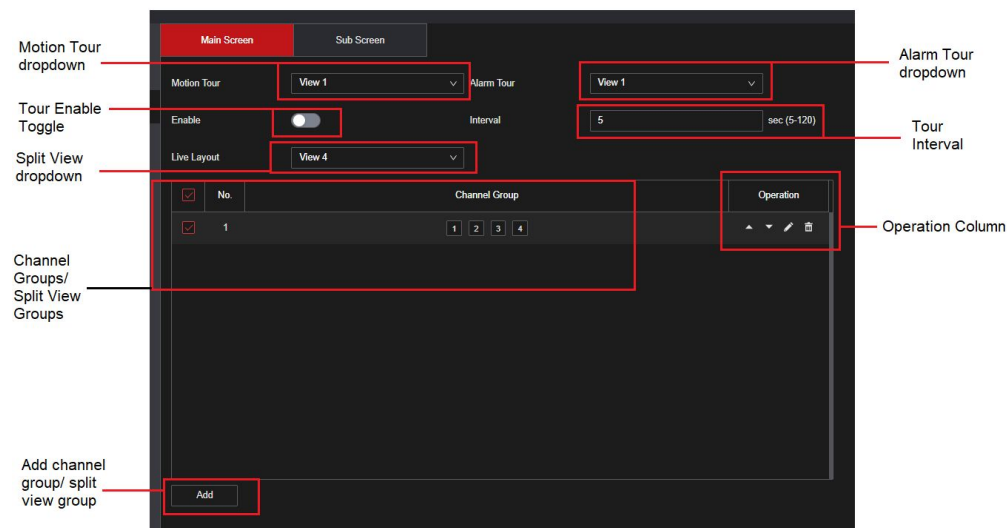


5. Other options in the Operation column include:



- Change the order of channel group/ split view
- Edit channel group
- Delete Channel Group

- Configure the time between view by specifying the time in seconds under the Interval field
- You can also Setup Tour based on Motion Detector Alarm Triggers under the "Motion Tour" and "Alarm Tour."



<b>What is the default login?</b>	The NVS does not come with a default password; the password is set up by a user in during the device initialization. Contact your installer or technical support for further assistance with backdoor passwords.
<b>The NVS does not find any devices on Remote Device Search</b>	Make sure to set the NVS to <b>DHCP</b> in the Network settings. It will need to be on the same local network as the IP cameras/ NVR/ DVR.
<b>Can I set up the machine without a display connected?</b>	Yes. You can access the machine's configuration page from a computer by typing its IP address into a web browser. This typically defeated the purpose of this device.
<b>I can not access the login page through the web browser</b>	Use Configtool to search and verify that the NVS16 is in the local network. Check if NVS and PC are in the same network subnet.
<b>Added cameras won't connect/ show image</b>	Ensure you have the proper IP address, port numbers (TCP if IC Realtime, HTTP, RTSp for ONVIF) and login credentials properly input in Remote Device section. Make sure the status is green.
<b>I need more in-depth help regarding configuration</b>	IC Realtime has a Help Center that covers a variety of topics: <a href="https://icrealtime.zendesk.com/hc/en-us">https://icrealtime.zendesk.com/hc/en-us</a>

## 5A. FAQ

<b>What is the default login?</b>	The NVS does not come with a default password; the password is set up by a user in during the device initialization. Contact your installer or technical support for further assistance with backdoor passwords.
<b>The NVS does not find any devices on Remote Device Search</b>	Make sure to set the NVS to <b>DHCP</b> in the Network settings. It will need to be on the same local network as the IP cameras/ NVR/ DVR.
<b>Can I set up the machine without a display connected?</b>	Yes. You can access the machine's configuration page from a computer by typing its IP address into a web browser. This typically defeated the purpose of this device.
<b>I can not access the login page through the web browser</b>	Use Configtool to search and verify that the NVS16 is in the local network. Check if NVS and PC are in the same network subnet.
<b>Added cameras won't connect/ show image</b>	Ensure you have the proper IP address, port numbers (TCP if IC Realtime, HTTP, RTSp for ONVIF) and login credentials properly input in Remote Device section. Make sure the status is green.
<b>I need more in-depth help regarding configuration</b>	IC Realtime has a Help Center that covers a variety of topics: <a href="https://icrealtime.zendesk.com/hc/en-us">https://icrealtime.zendesk.com/hc/en-us</a>