

# Pioneer

## TS-A6880F 6" x 8" 4-Way Coaxial Speaker System

### A-series sound design

- Powerful and well controlled bass
- High sensitivity and wide dynamic range
- Natural and clear vocals

**A**  
series / série



- Twin 11mm polyethylene terephthalate (PET) hard dome tweeters
- 1-5/8" cellulose fiber cone midrange
- 6" x 8" carbon and mica reinforced Injection Molded Polypropylene (IMPP) cone construction
- Included custom-fit installation adapter to optimize fitment in applicable original equipment (OE) speaker locations

### FEATURES AND TECHNOLOGY



Carbon

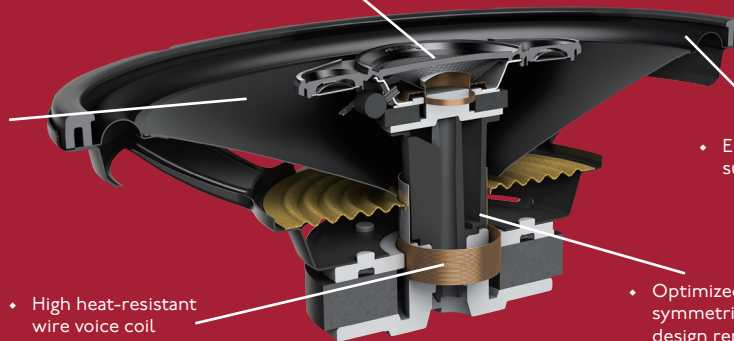
Mica



- Carbon and mica reinforced IMPP cone provides fast response and solid bass

- Midrange / tweeter bridge with integrated waveguide

- Twin Lightweight polyethylene terephthalate (PET) piezoelectric crystal tweeters provide extended high frequency response



- High heat-resistant wire voice coil

- Elastic polymer surround

- Optimized symmetrical motor design reproduces accurate sound



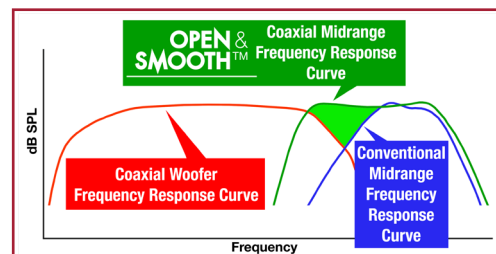
- Cellulose fiber midrange cone produces clear and natural sound with excellent frequency response characteristics

### EASILY UPGRADE TO HIGH PERFORMANCE

**OPEN & SMOOTH™**

#### Upgrade Your Sound

- OPEN & SMOOTH™ delivers smooth frequency response and an expansive soundstage
- Clear high frequencies
- Deep, rich bass
- Low distortion, even at high output



Pioneer's OPEN & SMOOTH sound concept provides a seamless and smooth transition between the woofer and midrange / tweeter drivers and delivers uniform off-axis frequency response optimized for automotive applications where one or more speakers are often aimed away from the listeners' ears.

#### Easy Installation

- Custom-fit for original equipment (OE) 6" x 8" speaker sizes (Ford & Mazda)
- Drop-in replacement installation with included custom-fit installation adapter to optimize fitment in applicable original equipment (OE) speaker locations for improved acoustic performance

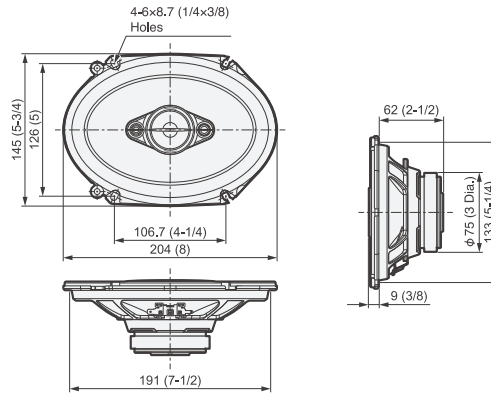


Included custom-fit installation adapters



## Dimensions

mm (inches)



## CarSoundFit

For a virtual listening demonstration of these and many other Pioneer car speakers, download the free Pioneer CarSoundFit app.



Download on the  
App Store



GET IT ON  
Google Play



Pioneer A-series Custom-Fit Coaxial Speaker Systems	TS-A1370F (also available)	TS-A6880F	TS-A4670F (also available)
<b>System Type</b>	3-way Coaxial	4-way Coaxial	4-way Coaxial
<b>Sound Pressure Level (Sensitivity)</b>	87dB (± 1.5dB)	88dB (± 1.5dB)	88dB (± 1.5dB)
<b>Frequency Range</b>	40 Hz to 36 kHz	34 Hz to 34 kHz	35 Hz to 42 kHz
<b>Continuous Power Handling (RMS)</b>	50 Watts	80 Watts	30 Watts
<b>Maximum Peak Power Handling</b>	300 Watts	350 Watts	210 Watts
<b>Nominal Impedance</b>	4Ω	4Ω	4Ω
<b>Woofer Cone Diameter</b>	5-1/4"	6" x 8"	4" x 6"
<b>Woofer Cone Material</b>	Carbon and mica reinforced IMPP	Carbon and mica reinforced IMPP	Carbon and mica reinforced IMPP
<b>Surround Material</b>	Elastic polymer	Elastic polymer	Rubber coated cloth
<b>Woofer Magnet Material</b>	Ferrite	Ferrite	Ferrite
<b>Woofer Magnet Weight</b>	7.6 oz.	7.6 oz.	4.4 oz.
<b>Mounting Depth</b>	2"	2-1/2"	1-5/8"
<b>Tweeter / Midrange Type</b>	11mm PET dome tweeter 1-5/8" cellulose fiber cone midrange	Twin 11mm PET dome tweeters 1-5/8" cellulose fiber cone midrange	Twin 11mm PET dome tweeters 1-5/8" cellulose fiber cone midrange
<b>Woofer / Midrange Crossover Frequency</b>	4,200 Hz	4,600 Hz	4,300 Hz
<b>Custom-fit Installation Adapters</b>	N/A	Included	Included

Pioneer A-series full-range speakers available in additional sizes and applications:

TS-A6960F, TS-A6970F, TS-A6990F (6" x 9") • TS-A1670F, TS-A1680F (6-1/2") • TS-A1370F (5-1/4") • TS-A4670F (4" x 6")

**WARNING:** Over time, your hearing "comfort level" adapts to higher volumes of sound, so that what sounds "normal" can actually be doing harm. To protect against hearing loss, set your equipment's volume at a low setting, slowly increase it until you can hear it comfortably and clearly, and leave it there. Do not turn up the volume so high that you can't hear what's around you.

Protect your investment. Purchase from an Authorized Pioneer Dealer. Only products purchased from an Authorized Pioneer Dealer (or Authorized Pioneer Internet Dealer) qualify for the manufacturer's warranty and manufacturer's rebates.

Pioneer Electronics (USA) Inc., Post Office Box 1760, Long Beach, California 90801 Pioneer Customer Service Department: 1-800-PIONEER

Note: Specifications, designs, and user interfaces are subject to modification without notice. Product colors and illumination may differ in photographs from actual appearance due to effects of printing and photography.

PIONEER, OPEN & SMOOTH and the Pioneer logo are trademarks or registered trademarks of Pioneer Corporation.

All other brand, product names, or logos are trademarks or registered trademarks of their respective holders.

2018 TS-A6880F- 9/18

©2018 Pioneer Electronics (USA) Inc.

Pioneer Electronics (USA) Inc. proudly supports and encourages you to support the Consumer Technology Association (CTA), Mobile Electronics Certification Program (MECP) for installers and the Specialty Equipment Market Association (SEMA).



**CHECK OUT MORE AT** [PIONEERELECTRONICS.COM/CAR](http://PIONEERELECTRONICS.COM/CAR)

[FACEBOOK.COM/PIONEER NORTH AMERICA](https://www.facebook.com/pioneelectronica)

[TWITTER.COM/PIONEERUSA](https://twitter.com/pioneerusa)

[INSTAGRAM.COM/PIONEER CAR AUDIO](https://www.instagram.com/pioneercaraudio)

[YOUTUBE.COM/PIONEER ELECTRONICS](https://www.youtube.com/pioneelectronics)