

Up Up And Away

Caracole

This dramatic, half-moon étagère offers a generous dose of contemporary style in a light and airy piece. The tall frame is high-polished Whisper of Gold metal that surrounds each of the six semi-circular glass shelves and provides its see-through, vertical structure. Adjustable brackets anchor the piece to the wall. With a crown and base in Auric leaf, this silhouette is a clear winner.



SKU: CLA-016-811

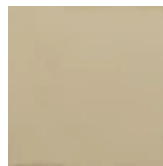
Dimensions in Inches: 39.0W × 18.5D × 85.5H

Dimensions in CM: 99.06W × 46.99D × 217.17H

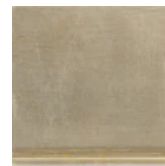
Features:

- Metal frame plated in Whisper of Gold.
- Crown and base leafed in Auric.
- All shelves are 1/4" tempered clear glass.
- Adjustable bracket for wall attachment.

Finish:



Whisper of Gold



Auric

Construction: Small shelf opening height: 6".
Large shelf opening height: 14.875".