

CLA-5423-103-123 QUEEN / KING BED

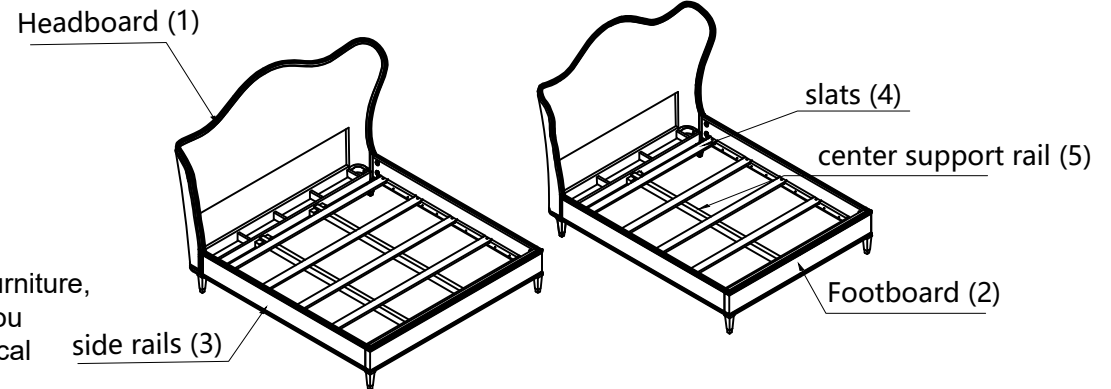
CARACOLE CLASSIC

ASSEMBLY INSTRUCTIONS

TWO (2) PEOPLE AND SCREWDRIVER REQUIRED

PLEASE UNPACK ALL PARTS AND CHECK AGAINST PARTS LIST ON THIS INSTRUCTION SHEET BEFORE DISCARDING PACKING AND CARTON!!

- 1) Connect the side rail and headboard/footboard by bolt (F).
- 2) Assemble the side rail and headboard/footboard using the curved washer (A), flat washer (C), lock washer (B), and nut (D) tighten with wrench provided (E), as shown in Diagram A.
- 3) Assemble the center support rail as shown in Diagram B.
- 4) Attach the bed slats on center support rail and cleat of side rails then using Philips screw driver to tighten the screw (G) as shown in Diagram C.



*** NOTE KEEP THIS SHEET!!! ***

In the unlikely event that you would need a replacement part for your furniture, please contact your local authorized Caracole International dealer. If you need replacement hardware quickly, it could be purchased from your local hardware store.

| Part Description | CLA-5423-103 | | CLA-5423-123 | |
|-------------------------|--------------------|---------|--------------------|---------|
| | QN BED | | KG BED | |
| | Part No. | QTY | Part No. | QTY |
| 1 Headboard | CLA-5423-103-H | 1 (pc) | CLA-5423-123-H | 1 (pc) |
| 2 Footboard | CLA-5423-103-F | 1 (pc) | CLA-5423-123-F | 1 (pc) |
| 3 Side rail | CLA-5423-103-R | 2 (pcs) | CLA-5423-123-R | 2 (pcs) |
| 4 Slats | CLA-5423-103-3067 | 5 (pcs) | CLA-5423-123-3067 | 5 (pcs) |
| 5 Center Support Rail | CLA-5423-103-30447 | 1 (pc) | CLA-5423-103-30447 | 2 (pcs) |
| 6 Assembly Hardware (1) | CLA-5423-103-3001 | 1 (pc) | CLA-5423-103-3001 | 1 (pc) |

| RTA Hardware (1) For Side rail and slats of KB and QB | | |
|---|----------------------------------|---------|
| NO. | Hardware List | Qty |
| A | Curved Washer(5/16" Ø28x15x76mm) | 8 (pcs) |
| B | Lock Washer (5/16"x13mm) | 8 (pcs) |
| C | Flat Washer (5/16"x16x2mm) | 8 (pcs) |
| D | Nut (5/16"x12mm) | 8 (pcs) |
| E | Wrench (5/16" 88x12mm) | 1 (pc) |
| F | Bolt (5/16"x100mm) | 8 (pcs) |
| G | Screws(#8x1-1/8") | 10 (pc) |

Step 1.

Headboard

Side rails

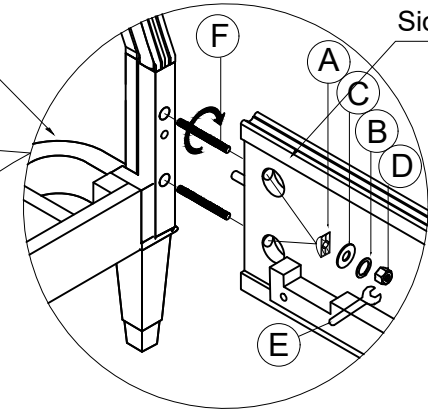
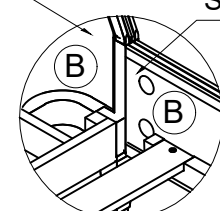
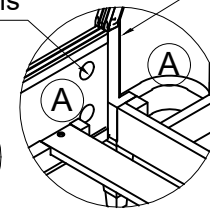


Diagram A

Side rails

Headboard

Side rails



On inside face of
Headboard and Side
rails notice A and B ,
need assembly
correct position A-A ,
B-B as shown

Step 3.

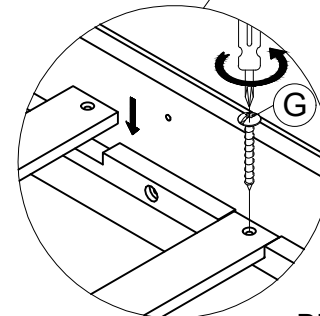


Diagram C

Step 2.

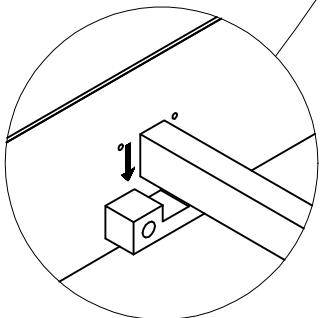


Diagram B

BED MATTRESS DIAGRAM

BEDDING SPECIFICATIONS

CLA-5423-103 Dimension of the true mattress opening: $81\frac{3}{4}"$ x $62"$

Bed slats: $62\frac{1}{4}"$ x $3\frac{1}{4}"$ x $\frac{3}{4}"$

CLA-5423-123 Dimension of the true mattress opening: $81\frac{3}{4}"$ x $78"$

Bed slats: $78\frac{1}{4}"$ x $3\frac{1}{4}"$ x $\frac{3}{4}"$

Side rail width: $1\frac{3}{4}"$

Height from the floor to bottom of the side rail: $7"$

Height from the floor to top of slat: $10\frac{1}{4}"$.

Height from the top of slats to top of side rail: $6\frac{3}{4}"$.

Height from the top of side rail to bottom of headboard pad: $3\frac{3}{4}"$

Be sure to adhere to these BEDDING SPECIFICATIONS in order to avoid the possibility of faling or entrapment THESE SPECIFICATIONS MUST BE STRICTLY ADHERE TO!

