

BI-36RG/O



FEATURES

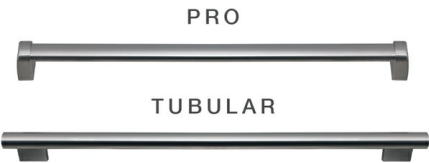
- Monitor and control remotely with Wi-Fi connectivity
- Accepts custom panels for an integrated look within cabinetry or stainless-steel accessory panels and handles to match other Sub-Zero, Wolf, and Cove products
- Fight spoilage and odors with a NASA-inspired air purification system
- Locks in cold air to ensure freshness with magnetic door seals
- Keeps produce fresher with high-humidity, sealed crisper and deli drawers
- Controls temperature within one degree of setpoint
- Display food via a single, triple-pane and UV-resistant glass door
- Ensures excellent visibility with bright lights
- Refer to freshness cards for tips on food preservation, use, and care

ACCESSORIES

- 66" Dual Flush Inset Stainless Grille Panel
- 90° Door Stop
- Air Purification Cartridge
- Custom Side Panel Mounting Kit
- Dual Installation Kit
- Egg Container
- Extended Framed Handle Kit
- Framed Handle
- Framed Louvered Grille Insert
- Grille Frame - 83"
- Grille Frame - 88"
- Louvered Grille - 83"
- Louvered Grille - 88"
- Pro Louvered Flush Inset Grille - 84"
- Stainless Steel Dual Flush Inset Door Panel with Pro Handle - LH
- Stainless Steel Dual Flush Inset Door Panel with Pro Handle - RH
- Stainless Steel Dual Flush Inset Door Panel with Tubular Handle - LH
- Stainless Steel Dual Flush Inset Door Panel with Tubular Handle - RH
- Stainless Steel Dual Flush Inset Grille Panel
- Stainless Steel Flush Inset Door Panel with Pro Handle - Left Hinge
- Stainless Steel Flush Inset Door Panel with Pro Handle - Right Hinge
- Stainless Steel Flush Inset Door Panel with Tubular Handle - Left Hinge
- Stainless Steel Flush Inset Door Panel with Tubular Handle - Right Hinge
- Stainless Steel Flush Inset Grille Panel
- Stainless Steel Kickplate - Left Hinge



HANDLE ACCESSORIES



PRODUCT DETAILS

REFRIGERATOR

- LED refrigerator lights
- 4 glass refrigerator shelves (3 adjustable; 1 stationary)
- 1 high-humidity crisper drawer with adjustable dividers
- 2 storage drawers with adjustable dividers
- 1 adjustable dairy compartment

Stainless Steel Kickplate - Right Hinge

Stainless Steel Side Panel

White Side Panel

Dual Installation Kit with Dual Wide Grille

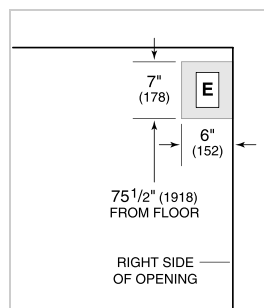
Accessories are available through an authorized dealer.
For local dealer information, visit subzero-wolf.com/locator.

Specifications are subject to change without notice. This information was generated on December 29, 2020. Verify specifications prior to finalizing your cabinetry/enclosures.

PRODUCT SPECIFICATIONS

| | |
|-----------------------|--------------------------|
| Model | BI-36RG/O |
| Dimensions | 36"W x 84"H x 24"D |
| Door Clearance | 37 1/4" |
| Weight | 430 lbs |
| Refrigerator Capacity | 23.3 cu. ft. |
| Electrical Supply | 115 VAC, 60 Hz |
| Electrical Service | 15 amp dedicated circuit |
| Receptacle | 3-prong grounding-type |

ELECTRICAL



PANEL SPECIFICATIONS For complete panels specifications including width/height, weight requirements, thickness requirements and offset details visit subzero-wolf.com/builtinconfigurator.

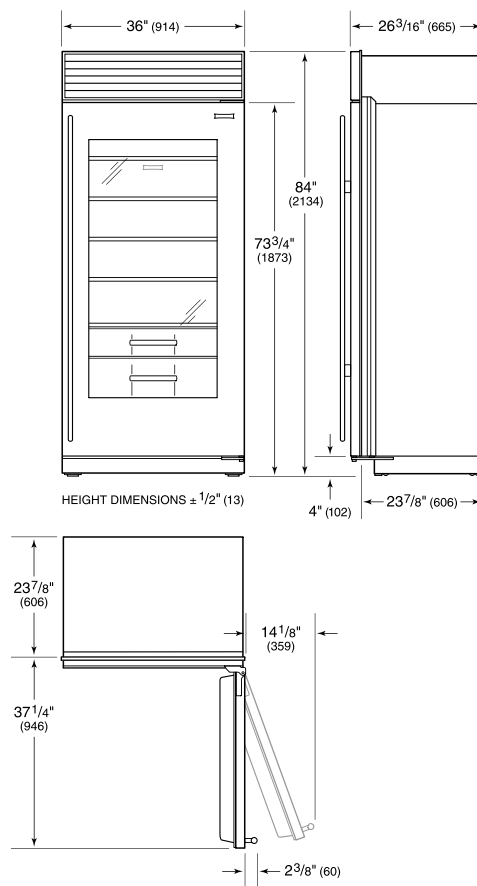
NOTE: Dimensions in parenthesis are in millimeters unless otherwise specified

INTERIOR VIEW

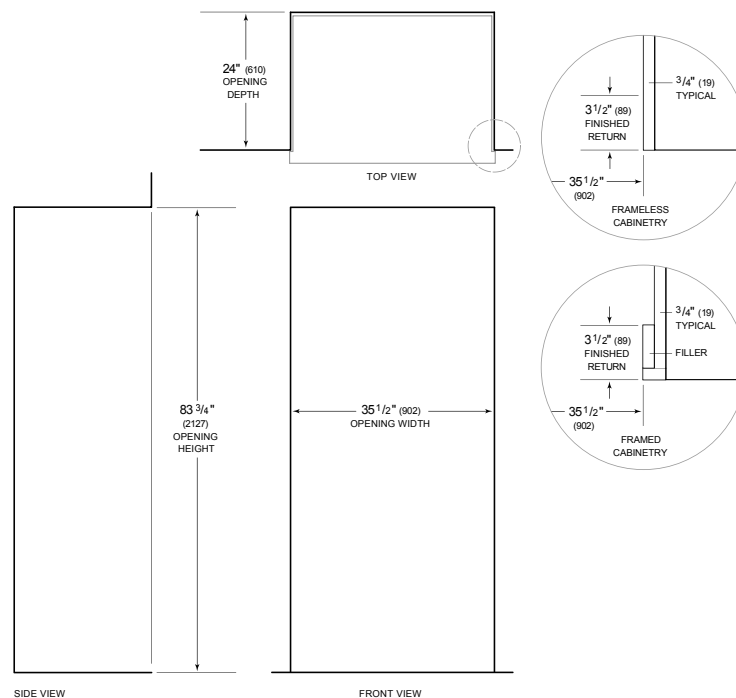


This illustration is intended for interior reference only and may not represent the exterior of the model being specified.

DIMENSIONS



STANDARD INSTALLATION



SIDE VIEW

FRONT VIEW

NOTE: 3 1/2" (89) finished returns will be visible and should be finished to match cabinetry. Shaded line represents profile of unit.