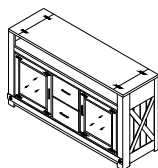


Be sure to check all packing material carefully for small parts, which may have come loose inside the carton during shipment.

### Component And Hardware List

76540 Entertainment Console



(A)

1 PC.

LEVELERS



(B)

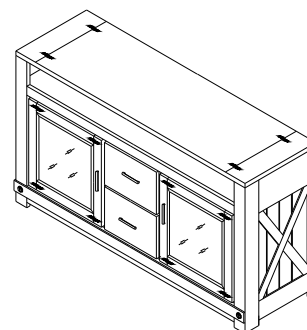
5 PCS.

Anti-Tip  
Restraint Kit



(C)

2 pcs.



#76540

Entertainment Console

Metal Plate



(D)

2 PCS

Ø7 x 5/8" Screw



(E)

4 PCS

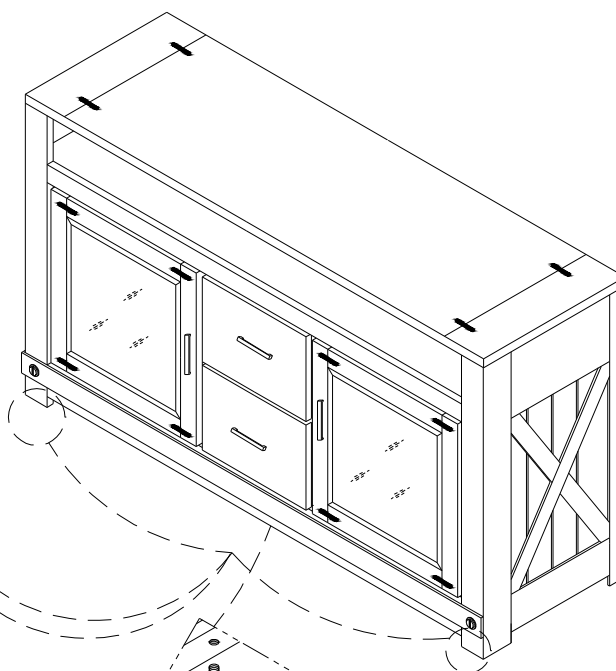
Center  
Support Leg



(F)

1 pc.

The Adjustable Shelves located behind the doors were secured for shipping. They can be moved to a different position by removing the attaching screws located underneath each shelf with your Phillips Screwdriver.



**B**

Adjustable levelers are installed in the bottom of the Legs and Center Support and can be adjusted to compensate for uneven flooring if needed.

**F**

**B**

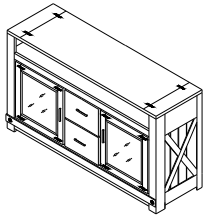
The Center Support Leg is attached underneath the cabinet.

**THANK YOU FOR YOUR PURCHASE.**

Be sure to check all packing material carefully for small parts, which may have come loose inside the carton during shipment.

### Component And Hardware List

76540 Entertainment Console



(A)

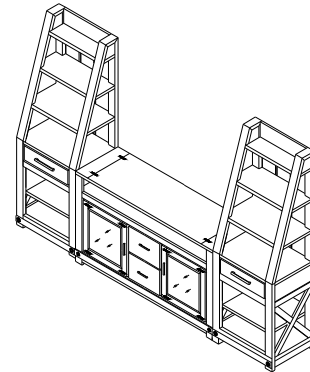
1 PC

#76548 Pier Cabinet

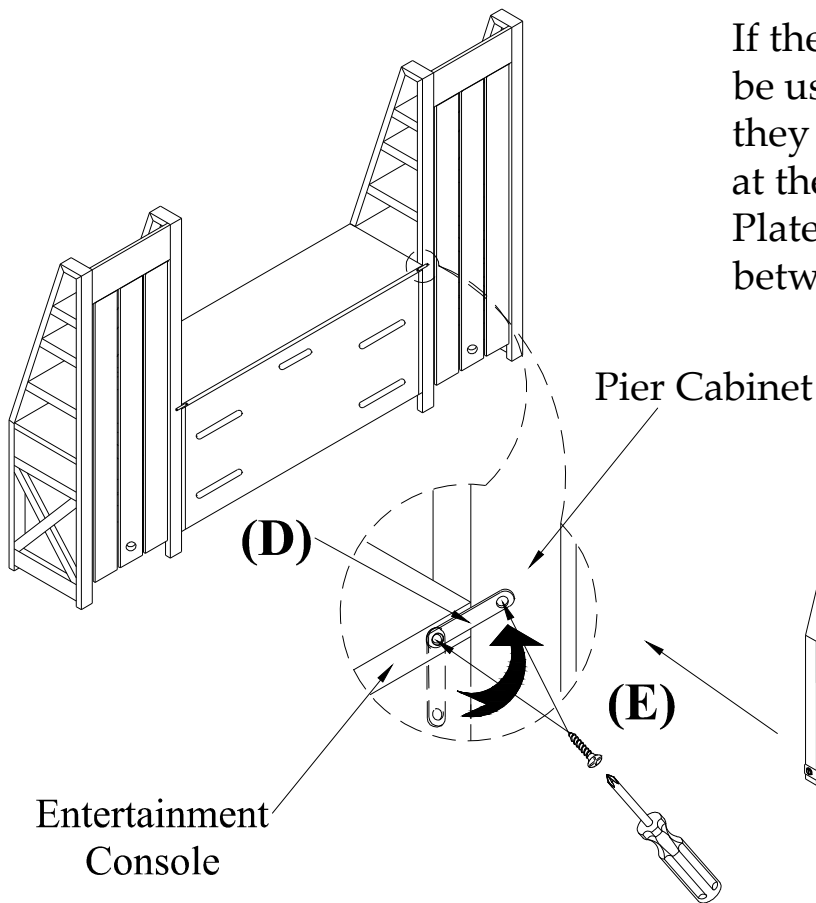


(B)

2 PCS



ITEM #76540/#76548



If the Pier Cabinets are going to be used with the TV Console, they can be connected together at the back using the Metal Plates, to help eliminate gaps between the cabinets.

### ASSEMBLY PROCEDURE:

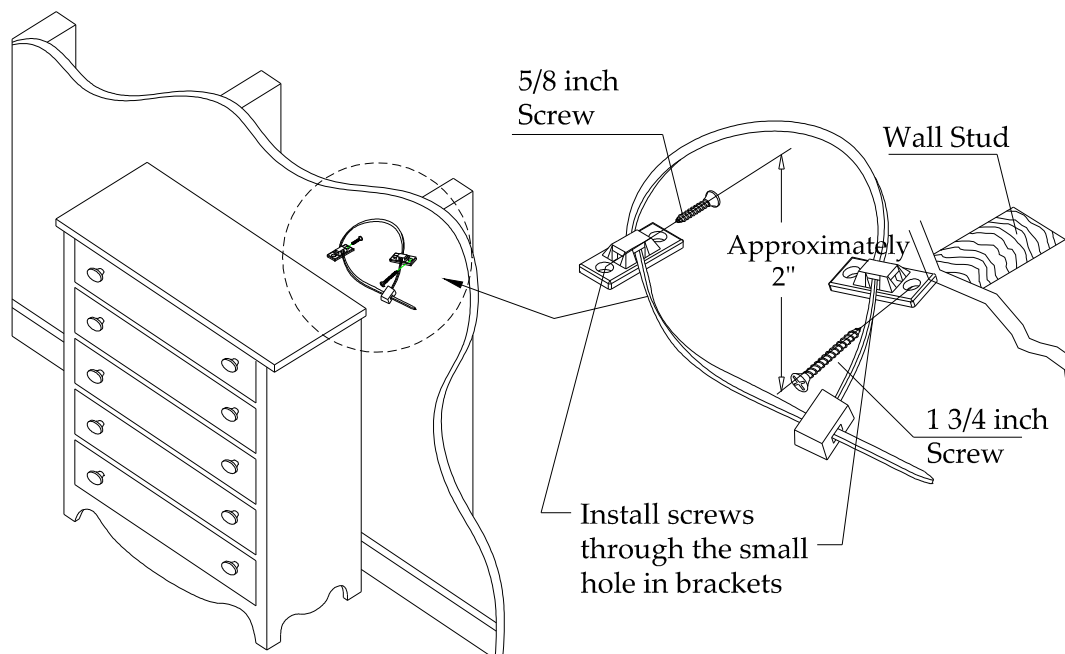
1. Attach the Metal Plates (D) to the back of the TV Console at each end using the Wood Screws (E) and your Phillips Screwdriver.
2. After moving the TV Console to near its final location in the room, position the Pier Cabinets at each end and pivot the Metal Plate over and attach it to the back of the Pier Cabinet with the other screws supplied.

Care must be taken when moving the units while connected together to prevent damage.

**THANK YOU FOR YOUR PURCHASE.**

## Anti-Tip Hardware Installation Instructions

Notice: In homes where small children may be present, Riverside Furniture Corp. recommends that steps be taken for certain furniture items to prevent or minimize the risk of tip-over. This furniture is equipped with Tip-over Restraint Hardware for use to minimize this risk, if used. Please follow below installation steps. Riverside Furniture Corp. recommends that parents and guardians periodically visit the U.S. Consumer Product Safety Commission (CPSC) website at <http://www.cpsc.gov/> and stay up to date on all issues related to children's product safety.



1. Temporarily locate the furniture to near it's final location in the room next to a wall. Locate a wall stud behind your furniture and also mark the stud's location on the back of your furniture.
2. Firmly attach one bracket to the stud approximately 2" below the top of the furniture with the **1 3/4 Inch Long** Wood Screws provided. It may be necessary to drill 3/32 dia. pilot holes for the screws.
3. Firmly attach the other bracket onto a solid, structural part on the back of the furniture using the **5/8 inch long** Wood Screws. It may also be necessary to pilot bore for these screws.
4. Move the furniture into its final position, taking care to line up the wall bracket with the furniture bracket. Thread a strap through the bracket as shown in the illustration. Tighten strap until snug but do not over tighten.

Caution: Riverside Furniture Corp. assumes no liability for improper installation or excessive loads placed on screws, brackets or straps. Failure to detach this restraint before moving furniture may result in personal injury and property damage.

Warning: This tip-over restraint is not to be a substitute for proper adult supervision. Do not allow children to climb on furniture. Items left on top of the TV and furniture, such as toys, remote controls and treats might tempt young children to climb. Push the TV as far back as possible from the front of its stand. Place electrical cords out of a child's reach, and teach children not to play with the cords.