

ASSEMBLY INSTRUCTION

Pg: 1/2

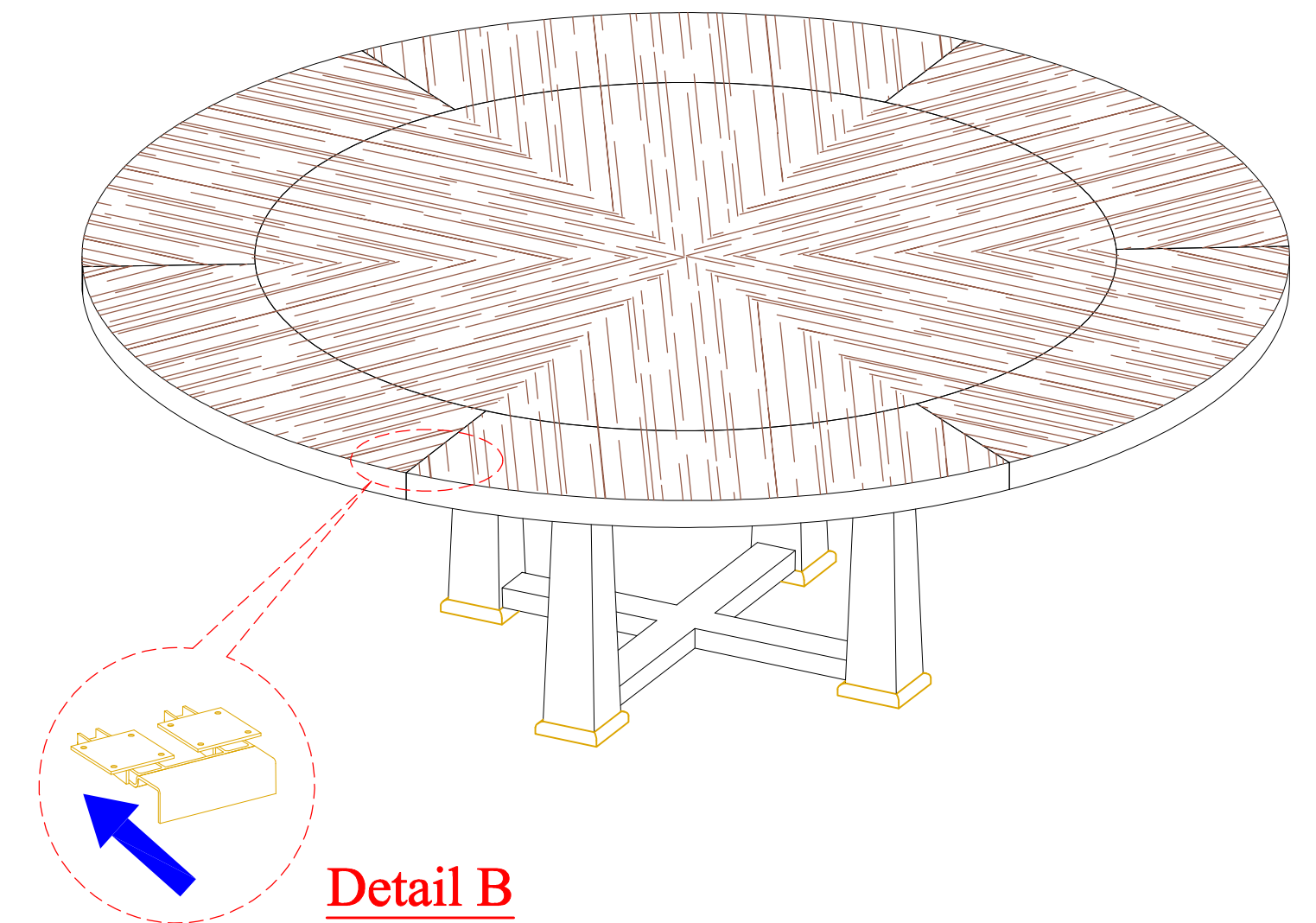
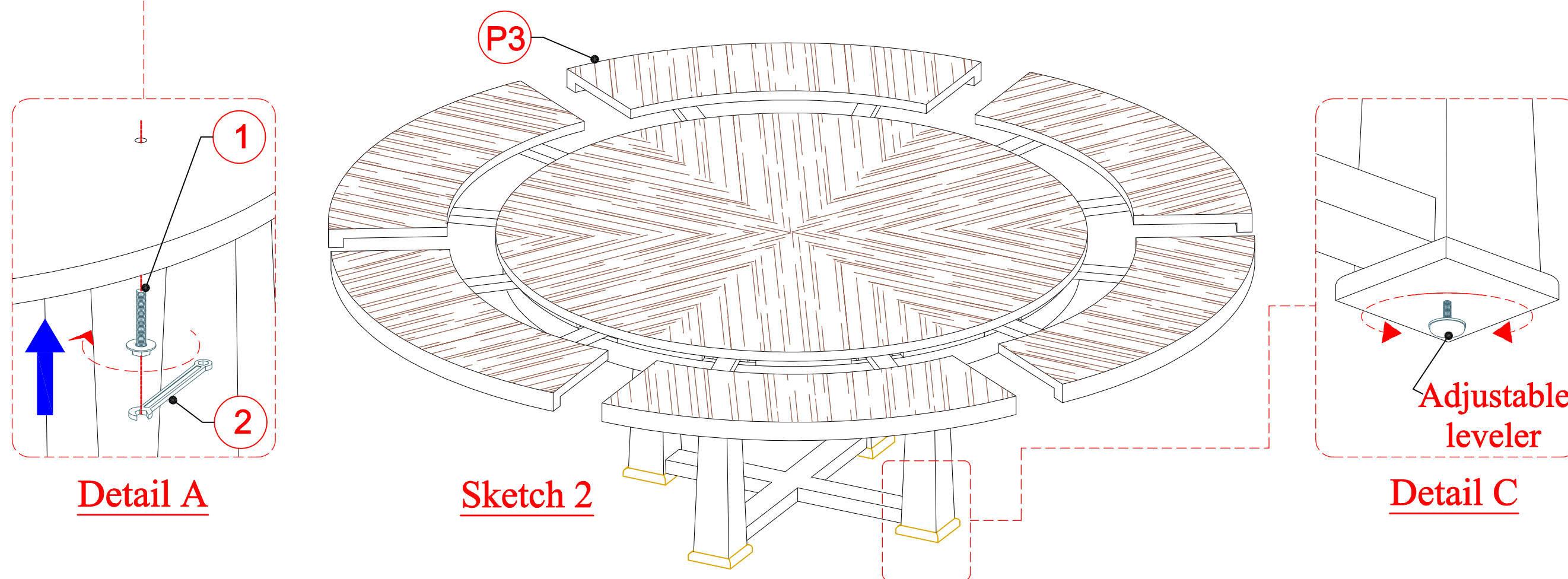
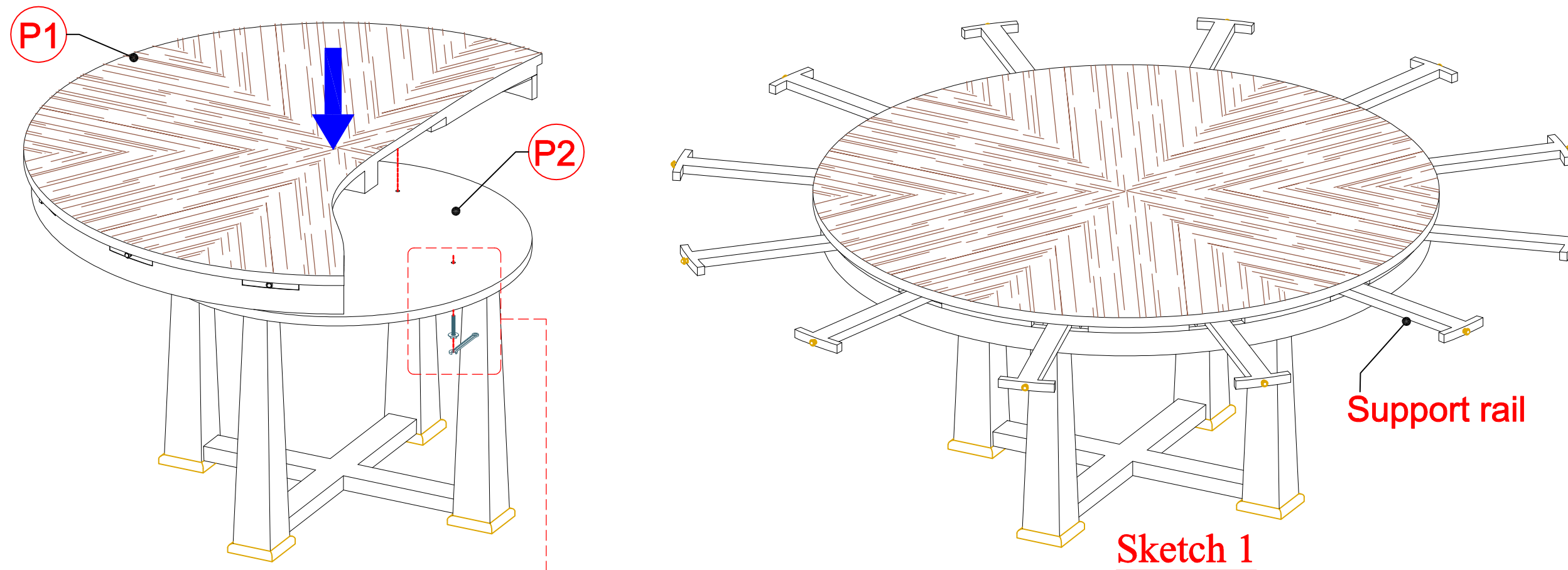
Ver: 01

PACKING LIST

No.!	Name of Item	Q'ty	U/M
P1	Table top	01	pc
P2	Base	01	pc
P3	Leaf top	06	pcs

HARDWARE

1	Hexagonal nut & washer	04	pcs
2	Steel open wrench	01	pc



INSTRUCTIONS :

1. Assemble the Table top (P1) to the base (P2) then insert steel hexagonal nut & washer (1), use steel open wrench (2) and turn clockwise direction to tightened them. Refer detail 'A'.
2. Pull support rail to the stopper. Refer Sketch '1'.
3. Set the Leaf top (P3) onto the support rail. Refer Sketch '2'.
4. Lock the Leaf top to the Main Table top by Brass Lock. Refer detail 'B'.
3. Item is ready to use. (Adjust glider for the table levelling if necessary, refer **Detail 'C'.**)

Draw: PL.Han

Date: Nov 06, 19