

DEX Seating

(140 Armless)

(141 Left Arm)

(142 Right Arm)

(143 Club Chair)



(151 Swivel Chair)



SEASIDE CASUAL

MADE IN RHODE ISLAND



ASSEMBLY INSTRUCTIONS

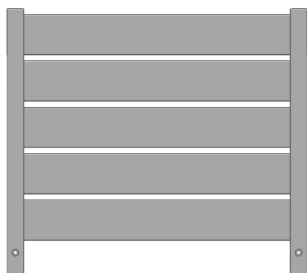
1

PLEASE READ INSTRUCTIONS COMPLETELY BEFORE BEGINNING.

Carefully remove contents from box. Make sure that all parts and hardware are included using the Parts List below.

Tools Required: 4mm Allen Wrench (included); #2 Phillips Head Screwdriver; Rubber Mallet

Back Assembly



x 1

Seat Assembly



x 1

Front Apron



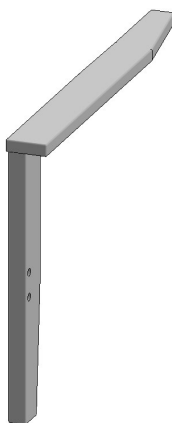
x 1

Rear Apron



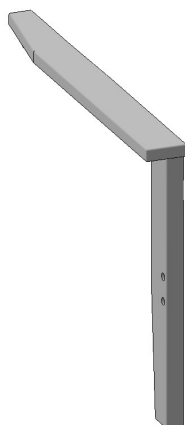
x 1

Left Front Leg Assembly



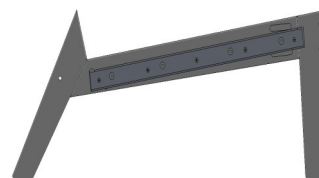
140 x 0
141 x 1
142 x 0
143 x 1

Right Front Leg Assembly



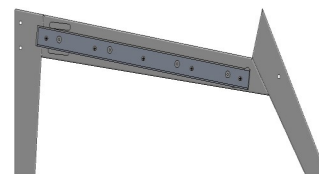
140 x 0
141 x 0
142 x 1
143 x 1

Left Armless Side Assembly



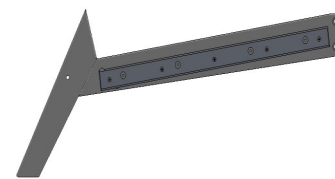
140 x 1
141 x 0
142 x 1
143 x 0

Right Armless Side Assembly



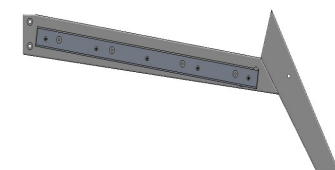
140 x 1
141 x 1
142 x 0
143 x 0

Left Armed Side Assembly



140 x 0
141 x 1
142 x 0
143 x 1

Right Armed Side Assembly



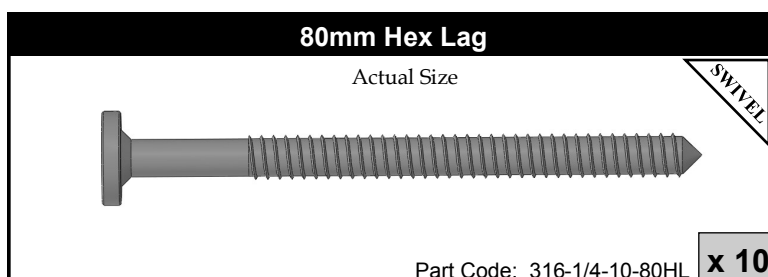
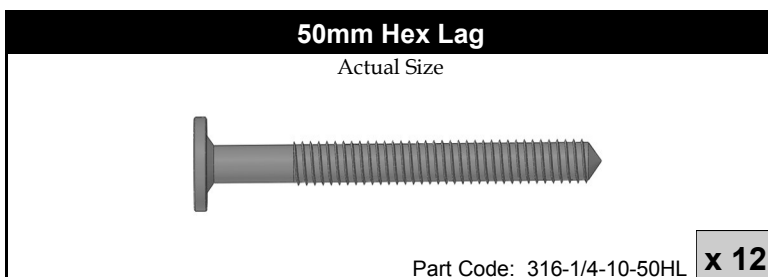
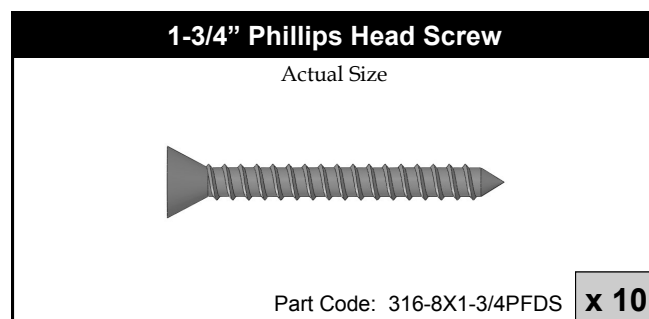
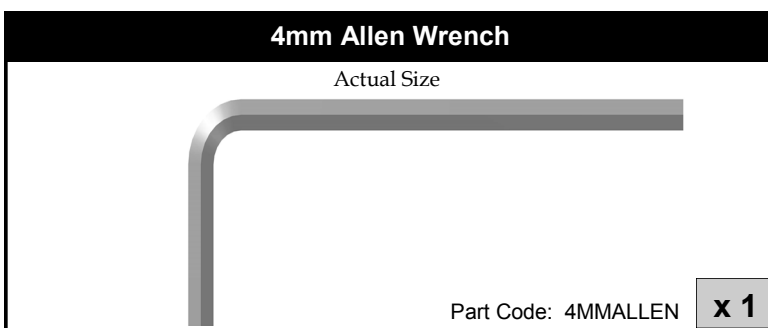
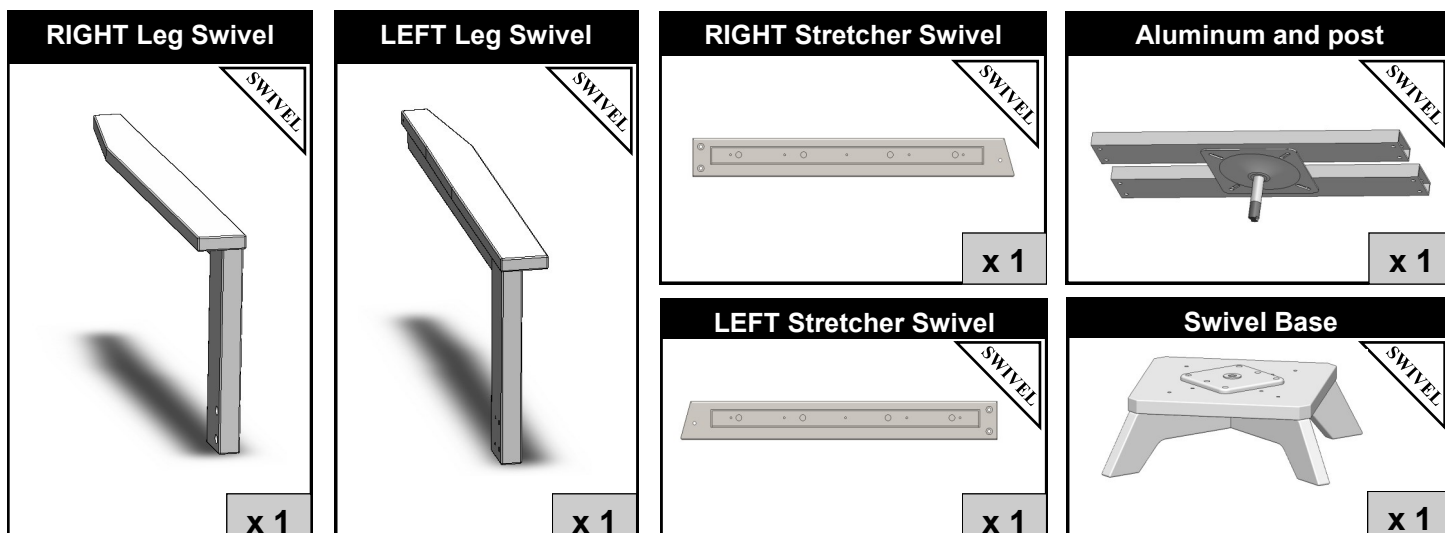
140 x 0
141 x 0
142 x 1
143 x 1

WARRANTY QUESTIONS OR COMMENTS PLEASE CALL TOLL FREE AT 1-800-809-3114

DEX Collection 140, 141, 142, 143 Rev B Page 1

Seaside Casual Furniture | 11 Industrial Drive Coventry, RI 02816 | 800-809-3114 | sales@seasidecasual.com

Parts List Continued:

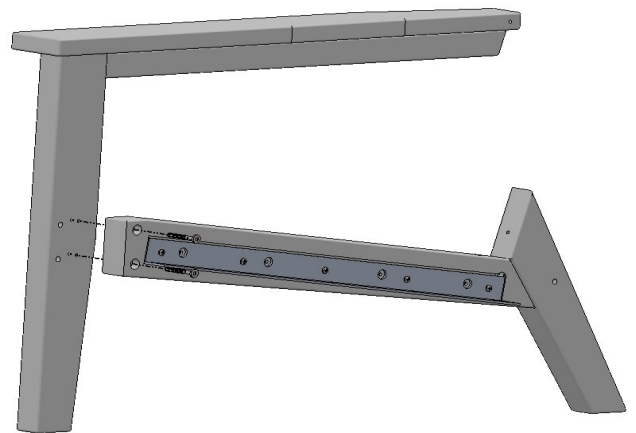


THIS SECTION INTENTIONALLY LEFT BLANK

2

ATTACH SIDE TO FRONT LEG ASSEMBLY (ARMED VERSIONS ONLY)
(STRETCHER FOR SWIVEL)

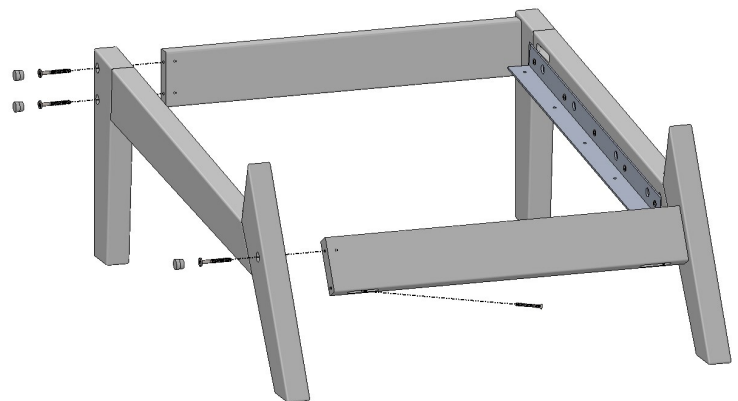
Align Front Leg Assembly with corresponding Side Assembly as shown. Secure using (2) 50mm Hex Lags thru counter-bores in Side Assembly into pilot holes in Front Leg.



3

ATTACH APRONS TO SIDE ASSEMBLIES

Align Front and Rear Apron (Rear Apron has pocket for screw) as shown. Secure using *(6) 50mm Hex Lags thru counter-bored holes in Legs into pilot holes in Aprons. Secure Rear Apron using (2) 1-3/4" Phillips Head Screws thru pockets into Rear Legs. Plug Holes with 5/8" taps®.



*Substitute 80mm Lags for Swivel

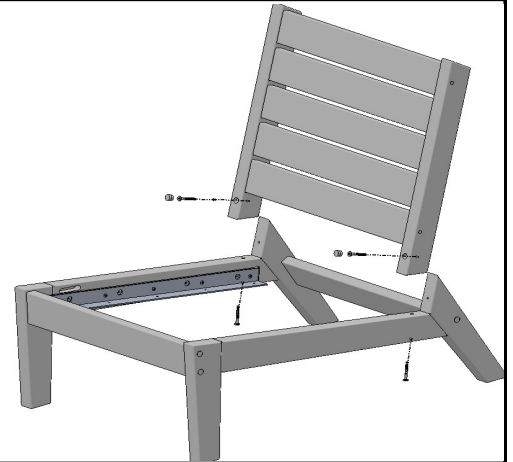
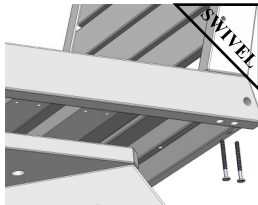


4

ATTACH BACK ASSEMBLY

Align Back Assembly as shown. Secure using (4) 50mm Hex Lags thru counter-bored holes in Side Aprons thru pilot holes in Back. And thru counter-bores in Back Assembly into pilot holes in Rear Legs. Plug Holes in Back with 5/8" taps®.

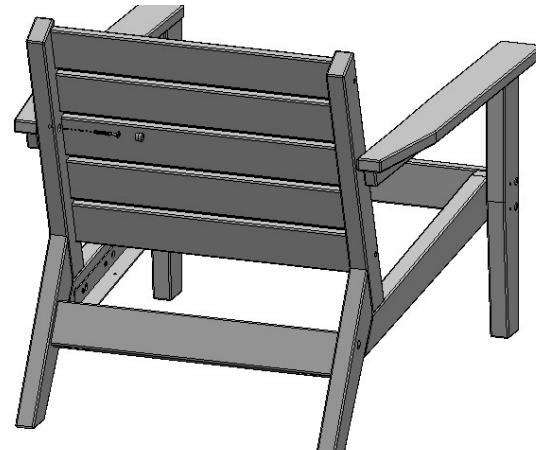
(4) 80mm Hex Lags for Swivel



5

ATTACH ARMS TO BACK (ARMED VERSIONS ONLY)

Attach rear of Arm to Back Assembly using (1 per Arm) 50mm Hex Lag thru counter-bore hole in rear of Back Assembly into pilot hole in rear of Arm. Plug hole with 5/8" taps®.

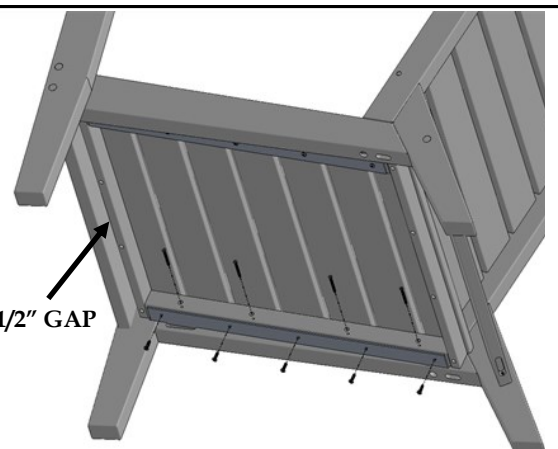


6

ATTACH SEAT ASSEMBLY

Secure Seat Assembly using (8) 1-3/4" Phillips Head Screws thru counter-bores in Seat into Pilot holes in Side Assembly. Then use (10) 3/4" Pan Head Screws thru Aluminum into bottom of Seat Support. (NOTE: 1/2" GAP BETWEEN FRONT SEAT SLAT AND FRONT APRON)

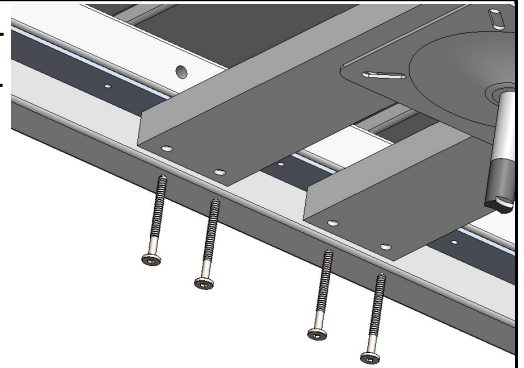
NOTE: 1/2" GAP



7**ATTACH ALUMINUM AND POST TO SEAT BASE**

SWIVEL

Attach Aluminum and Post to seat base through pre-drilled holes in aluminum using 70mm Hex Lags. Ensure proper alignment with holes before tightening.

**8****INSERT FULLY ASSEMBLED CHAIR ONTO BASE**

SWIVEL

Insert fully assembled chair onto base as shown.

