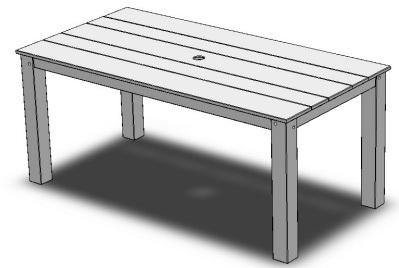


Greenwich Table

600



ASSEMBLY INSTRUCTIONS

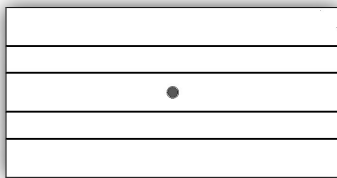
1

PLEASE READ INSTRUCTIONS COMPLETELY BEFORE BEGINNING.

Carefully remove contents from box. Make sure that all parts and hardware are included using the Parts List below.

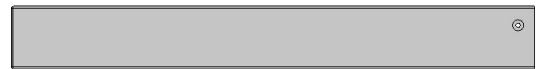
Tools Required: 4mm Allen Wrench (included); #2 Phillips Head Screwdriver; Socket set (Recommended: Rubber Mallet; Power Drill)

TOP



x 1

LEG



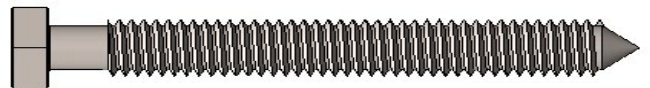
x 4

90mm Bolt



x 4

3/8" HEX LAG



x 8

1/4 LOCK WASHER

Actual Size



x 8

1/4 FLAT WASHER

Actual Size



x 8

1/4-20 NUT

Actual Size



x 8

5/8" TAPS



x 8

4mm ALLEN WRENCH

Actual Size



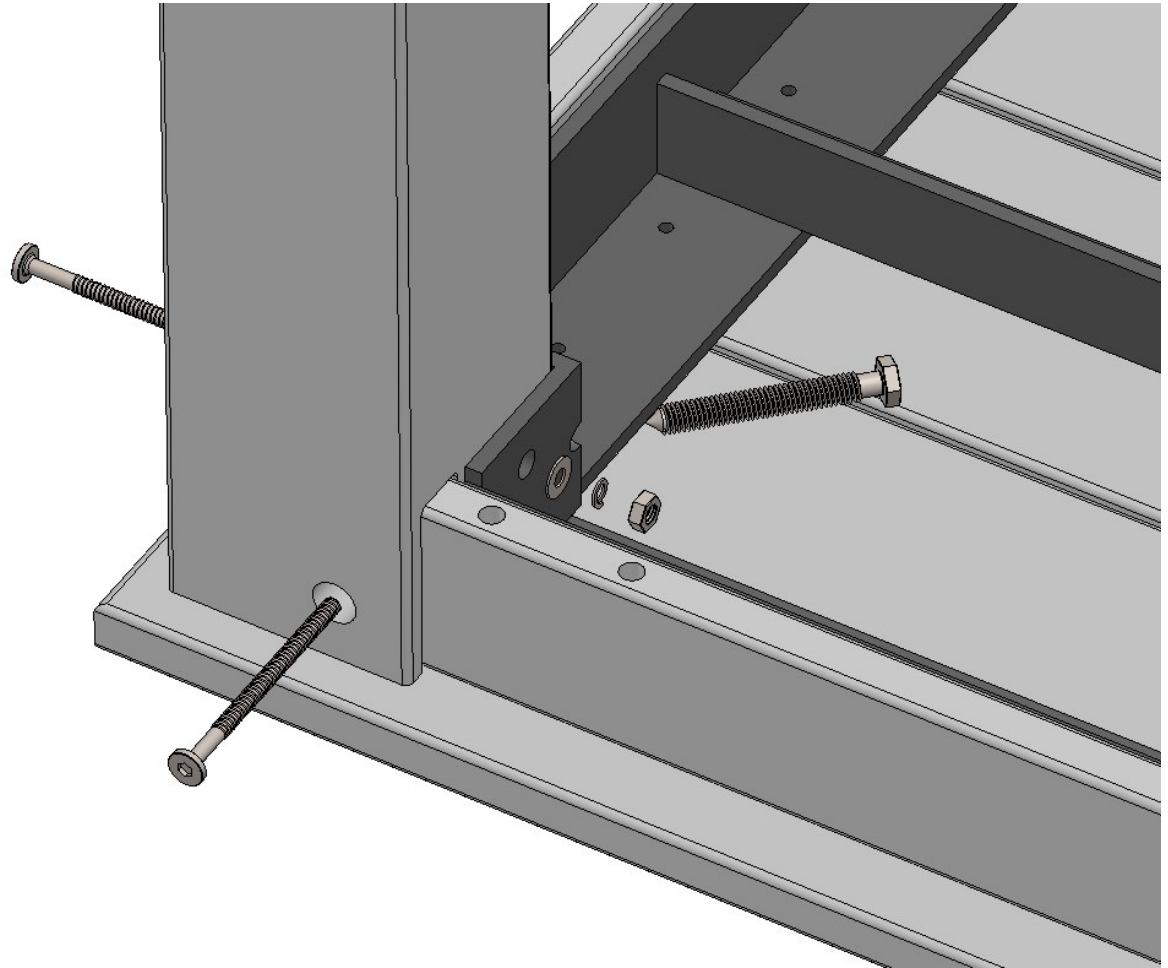
x 1

WARRANTY QUESTIONS OR COMMENTS PLEASE CALL TOLL FREE AT 1-800-809-3114

Seaside Casual Furniture | 11 Industrial Drive Coventry, RI 02816 | 800-809-3114 | sales@seasidecasual.com

2

ATTACH TOP TO LEGS



On a clean flat surface connect legs to Top using (2) 90mm Bolts, Washers, split washers, and nut (AS SHOWN). Finger tighten. Attach 3/8" LAG to inside of leg. Repeat with remaining legs. Do not over tighten. Plug holes with supplied 5/8" TAPS.