

Hooker Furniture Bedroom Furniture Nouveau Chic Three Drawer Nightstand

Hooker Furniture

www.hookerfurniture.com

SKU: 6500-90016-80

Width: 34" (86.4 cm)

Depth: 19" (48.3 cm)

Height: 30" (76.2 cm)

Weight: 77 lb (34.6 kg)

Volume: 17.7 cu ft (0.5 m³)

Carton Width: 38 (96.5 cm)

Carton Length: 23" (58.4 cm)

Carton Height: 35 (88.9 cm)

Carton Weight: 106 lb (47.7 kg)

Availability: In Stock - Martinsville, VA

Type: Nightstands

Category: Bedroom

Collection: Nouveau Chic

Number of Shelves: 0

Number of Drawers: 3

Number of Leaves: 0

Style: Transitional

Finish: Light Wood

Brand: Hooker Furniture

Collection Features: The Nouveau Chic Collection is a casual modern group drawing inspiration from the curvaceous yet uncomplicated designs that are popular today. Nouveau Chic unites classic architectural elements like cathedral and quartered oak, movement of soft shapes, metallicized shagreen, and polished metal accents to create a dramatic yet easy modern aesthetic.

Status: Active

Finish: Sandstone: cathedral and quartered oak veneers with light wire brushing along with transparent and opaque stains to create this serene finish. Nickel finished bar pulls.

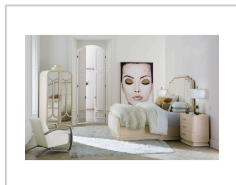
Features: Curved breakfront design
Three self-closing drawers with cream colored painted interior
Two USB charging ports and cord clip on back
Levelers

Material: Oak Veneers

Drawer Construction: Hooker Furniture offers full height, full depth and full width drawers for maximum storage capacity. All drawers have strong, time-tested English or French dovetail construction, for years of problem-free use. Plywood drawer bottoms are attached to plywood

Finish Construction: Hooker Furniture utilizes a multiple-step finish process of up to 16 finish steps. This results in an unsurpassed clarity, depth and color richness and durability to our finishes. Through hand-craftsmanship such as rubbing and padding, our finishes feel as good as they look, with a smoothness that is delightful to the touch.

Frame Construction: Hooker Furniture uses carefully chosen solid wood and select wood veneers over durable wood products in our furniture construction. Use of veneers enables more decorative looks unattainable with solid wood. Veneers are used over durable wood products such as medium density fiberboard (MDF) and particle board, made of renewable resources. MDF and particle board are used in quality furniture for areas that need to be stable, such as large surfaces. These durable wood products do not expand and contract with heat and cold and do not absorb moisture as much as solid wood, which results in stronger and longer-lasting furniture.



Let's chat

We're Online