

## Refrigeration Equipment Undercounter Refrigerator, 27" with 2 Drawer - Stainless Steel (R600a)

ITEM # \_\_\_\_\_  
MODEL # \_\_\_\_\_  
NAME # \_\_\_\_\_  
SIS # \_\_\_\_\_  
AIA # \_\_\_\_\_



**738290 (KCHUC27.2DR)**

2-drawer undercounter refrigerator, 27", R600a refrigerant gas, 33/+41°F, stainless steel - Energy star

### Short Form Specification

**Item No.** \_\_\_\_\_

2-drawer refrigerator counter top with exterior back panel in aluminium, exterior bottom panel in galvanized steel, exterior side and top panel in 430 stainless steel; interior back, top and bottom panels in 304 stainless steel.

Fin & tube condenser to improve the performances in high temperature environments. Automatic Defrost Cooling System and temperature control. Vinyl heavy duty adjustable, easy to handle and clean shelves. External temperature display.

R600a gas in refrigeration circuit.  
ETL Safety and Sanitation certified.  
3/5 Years warranty.

### Main Features

- External temperature display.
- Removable gasket for easy cleaning operations.
- Fin & Tube Condenser improves performance in high temperature environments.
- Automatic Defrost Cooling System provides worry-free performance.
- Electronic Temperature Control, quick and simple to set, with control display for easy monitoring.
- Heavy duty Vinyl coated steel shelves.
- High efficiency components to minimize the energy consumption still guaranteeing the highest performances.
- Cabinet completely insulated with high density polyurethane for low environmental impact.

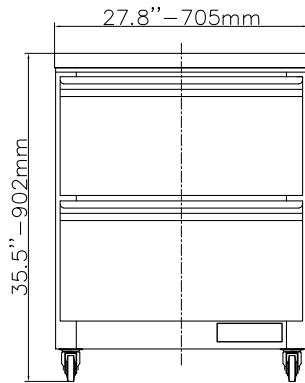
### Construction

- Stainless steel interior and exterior, durable and easy to clean for daily commercial use.
- Heavy duty casters.
- CFC and HCFC free (ecological refrigerant type: R600a).
- Pre-wired heavy duty power cord.
- Magnetic gasket removable without tools for easy cleaning.
- Heavy duty drawer runners.

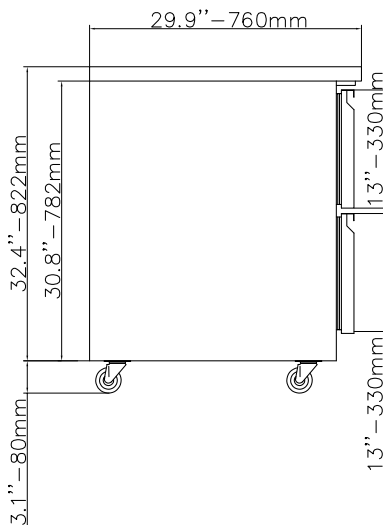
**APPROVAL:** \_\_\_\_\_

## Refrigeration Equipment Undercounter Refrigerator, 27" with 2 Drawer - Stainless Steel (R600a)

**Front**

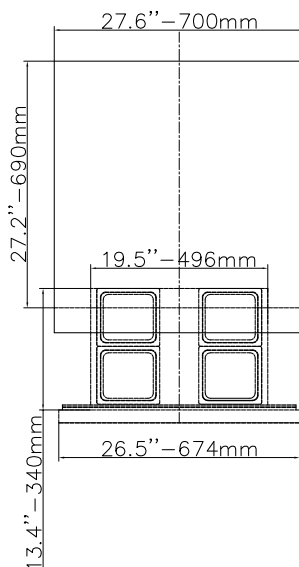


**Side**



El = Electrical connection

**Top**



### Electric

**Supply voltage:**

738290 (KCHUC27.2DR) 115 V/1 ph/60 Hz

**Electrical power, max:**

0.2 kW

**Current consumption:**

1.5 Amps

**Plug type:**

USA NEMA 5-15P

### Key Information:

Capacity (Cu. Ft.)	27
External dimensions, Width:	27 3/4" (705 mm)
External dimensions, Depth:	29 15/16" (760 mm)
External dimensions, Height:	35 1/2" (902 mm)
Number and type of doors:	
Internal Dimensions (depth):	22 13/16"
Internal Dimensions (height):	23 1/2"
Internal Dimensions (width):	22 1/4"
Shipping height:	38 3/16" (970 mm)
Shipping weight:	185 lbs (84 kg)
Shipping volume:	20.41 ft <sup>3</sup> (0.58 m <sup>3</sup> )
Number and type of grids (included):	1 - Vinyl-Coated Steel
Type of external material:	Stainless Steel
Type of internal material:	Polystyrene
Warranty:	3 / 5 years

### Refrigeration Data

Compressor Horsepower:	1/6
Refrigerant type:	R600a
Refrigerant weight:	70 g
Operating temperature min.:	32 °F
Operating temperature max.:	41 °F
Condenser type:	Fin & tube
Defrost type:	Auto Defrost