



PALETTES  
BY WINESBURG

# Dining

COLLECTION



Here at Palettes by Winesburg, we are extremely proud of our solid wood dining furniture. Our tables, chairs, and cases are crafted with pride. Palettes Dining is a selection of our favorite time-tested designs complemented with some gorgeous and inspirational new pieces. With our furniture, you can create the perfect atmosphere for your home. Simply select a design you love from our ample choices of table tops, bases, and seating. Then choose a complementing finish and fabric, and we will bring it to life for you. The best part of choosing a Palettes by Winesburg set is knowing it will last for decades to come.

Our dining furniture is completely handcrafted in Winesburg, Ohio, the Heartland of America. We emphasize "casual, yet elegant" styles from traditional to the eclectic, all made with superior craftsmanship and produced efficiently from timber that we harvest ourselves. Our family has been growing and processing timber for generations. Someone in our family is involved with every step of the production, from planting the seedling to putting that last touch on the heirloom quality furniture that we custom handcraft for you.

The name "Palettes" means we give you a blank slate, an empty artist's palette, and you fill in your custom color, fabric, style, and wood species to create your own masterpiece, exactly the way you want it. Fine furniture is an art for those who appreciate the very best. We invite you to create your own masterpiece and hope your family enjoys the furniture as much as we enjoyed making it for you.



#### **ON THE COVER:**

These Venice chairs, item VEN6204 are shown with our Rectangular Smooth Plank table top, 4272PA000SM which is bordered with our EE Standard edge profile. The table is supported with the Double Eleanor pedestal, item P2T. This set is constructed in in Wormy Maple. The table top and chair seats show our 400 Belair stain and the remaining pieces have our 402 Mocha stain.



# PALETTES

## DINING COLLECTION

Our solid wood furniture is handcrafted here in the USA, with every detail just the way you want it. Choose a table top to fit your space, pair it with your favorite table base, then add the perfect chairs and case to complete your room. Take a look through our dining collection, pull together all the elements you love and create your new space.

ABOUT PALETTES BY WINESBURG | **2**

OUR WOOD SPECIES | **4**

INSPIRATIONS | **6**

CHAIRS | **57**

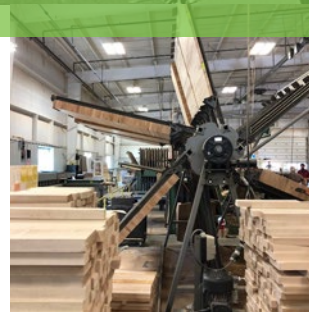
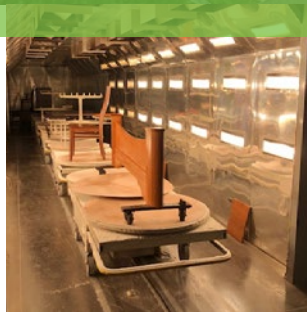
TABLES | **61**

CASES | **75**

FINISHING OPTIONS | **88**

CARE & MAINTENANCE | **94**





## AMERICAN MADE FURNITURE, FROM FOREST TO FABRICATION

Located in the rolling farmland of Ohio's Amish country, Palettes by Winesburg is a third generation of lumber specialists who hand-select the best of cherry, oak, maple, walnut, or elm trees to bring you our quality products. We know the building of solid wood furniture from its roots. Winesburg Lumber had its origins as a two-man logging operation more than three generations ago. As the younger generation became a part of this growing organization they felt that diversification was a path for future success and growth, and so we began building doors and contract grade chairs. This has evolved into one of the most complete custom furniture lines in the country.





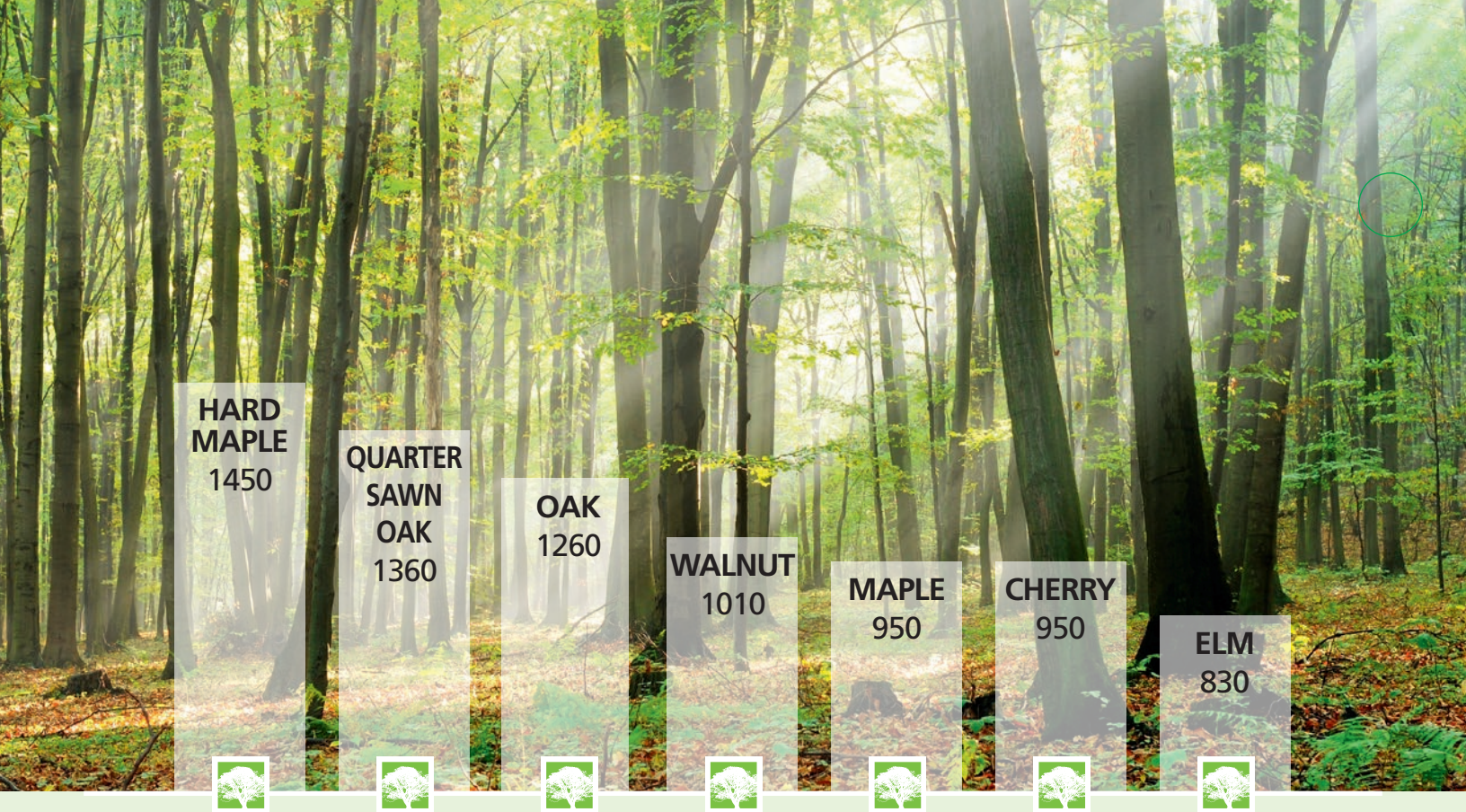
- A Office
- B Log Receiving
- C Sawmill
- D Dry Kiln
- E Lumber Sorting Station
- F Furniture Manufacturing
- G Furniture Finishing
- H Furniture Shipping



## UNIQUE FROM START TO FINISH

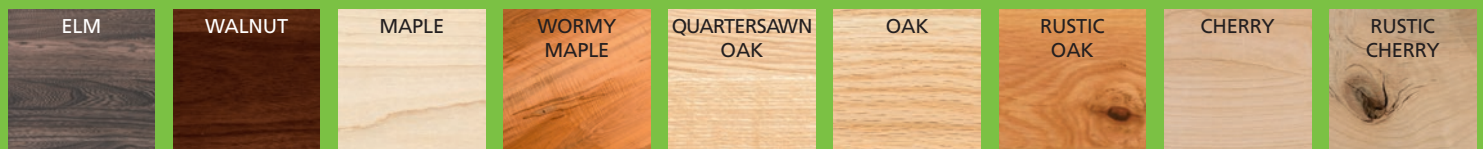
Each piece of furniture we build is made specifically for the customer. The choice of wood and stain, the fabric selection, even the hardware on doors and drawers is chosen to make your furniture completely unique. That's simply how we do it here. Palettes by Winesburg is the most unique company in the furniture industry. We're fully vertical. Meaning, from start to finish for each piece of furniture we manage every step. We control the materials, the manufacturing, and the distribution to create gorgeous furniture that lasts.





## The Janka Scale

The Janka Scale represents the pressure (in pounds) that it takes to mar the kiln dried wood. A higher number means the wood's surface is harder. Be sure to learn the species of wood for each piece of furniture you consider. Our furniture can be crafted in your choice of 6 hardy species, ensuring that your heirloom quality furniture can stand up to decades of loving use as each piece is passed down.



**ELM** can have a beautiful straight or interlocking grain pattern and is valued for its resistance to splitting. When finished with our Michaels stain, this species is breathtaking. The only other color we offer is Gravel stain on Elm, shown above.

**WALNUT** is a strong, durable hardwood with a mostly straight grain. Its deep tones inspire a feeling of luxury.

**MAPLE** is a strong, fine-grained hardwood with an even texture. Slight color variations add character to this straight grained wood.

**WORMY MAPLE** has a cream colored background with beautiful brown and greyish blue stripes. In most, or all of the streaks, there are tiny holes from beetle larvae burrowing into the wood.

We use Hard Maple for chair seats and table tops for superior durability.

**QUARTERSAWN OAK** is Oak wood which has been cut on an angle to display a tighter grain pattern for a cleaner look.

**OAK** is a widely used, strong hardwood with a coarse texture and distinct grain pattern.

**RUSTIC OAK** boasts the same qualities as oak, but features many other natural characteristics such as knots, streaks and pits.

**CHERRY** is a moderately hard, yet very strong wood with a fine grain. Cherry darkens over time, enriching your furniture's appearance each year.

**RUSTIC CHERRY** is Cherry wood without the uniform, fine grain. Boards with knots, streaks, and pits are used, showing the natural beauty and character of this species.

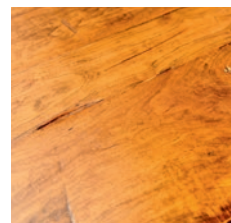


The wood's **imperfections** are what make it so beautiful. It's this kind of **character** that makes each piece worth passing down through generations. Here are some of the traits sought out by designers, and **found in our furniture...**



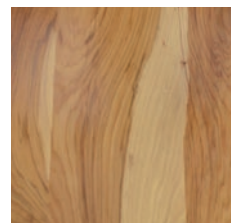
**GRAIN** | The grain of each wood species, whether coarse or fine grained, will show through the stain. Be sure to choose the type of wood with a grain that you love. We select boards for the best grain match but please remember that the tightness of the grain can vary greatly from board to board. The contrasting grain in boards bring more interest and character to your furniture.

**MINERAL DEPOSITS** | These dots and streaks occur randomly throughout wood due to the tree storing minerals or sap. These do not diminish the strength or quality of the furniture, they only add to its uniqueness.



**END GRAIN** | All of our pieces are solid wood. This means that the end grain will show. This crosscut surface is softer and soaks up more of the stain, giving it a darker appearance.

**COLOR VARIATION** | Each board we use in every piece of furniture is unique. The natural variances of wood cause variations in the furniture, regardless of which finish is used.



**AGING** | Wood will darken over time, offering more warmth and depth to furniture underneath the stain. Humidity, light, smoke, and even heat and steam from cooking can accelerate the darkening of wood. The darkening effect of aging will be even more extreme when lighter stains are used.

**JOINT LINES** | Since wood naturally expands and contracts with age, temperature and humidity, it is possible for small cracks or lines to show at joints. This is normal and does not weaken our furniture in any way when these appear.



# ADAMS



## Table

### 4242B212 P1D EF

Oval Top 42" x 42" x 1", item 4242B212, extends to 66" length with two 12" leaves and is shown with 104 Seely stain. This top is bordered with the Shaker table edge profile, option EF and is supported by our Single Norfolk Pedestal, item P1D with 1P SAV White Paint Savannah Glaze.

## Chairs

Adams Side Chair 38.25" x 17.75" x 16.75", item ADM1904 and Adams Arm Chair 38.25" x 24.25" x 16.75", item ADM1902 are both shown with 104 Seely stain on the seat, and our 1P SAV White Paint Savannah Glaze on the frame.

These items were constructed using solid Maple with our Vintage Distressing.





# ALSACE

## Table

### 5454COB P1N

Round Hammered Copper Top 54" x 54" x 1.5", item 5454COB. Sophia Base, item P1N.

## Chairs

Alsace Side Chair 41" x 20.5" x 19.25", item ALS2814. Seats are covered in 113 Linen Cigar fabric.

The table base and chairs in this set were crafted using Maple with our 3P PRT Black Paint Rub Thru finish.







# ARLO



## Table

### 4884A000 P2T EE

Rectangular Top 48" x 84", item 4884A000 is a solid top. This top is bordered with our Standard table edge profile, option EE, and is supported by our Double Eleanor Pedestal, item P2T, with 24P PRT Chelsea Grey Paint with Rub Thru.

## Chairs

Arlo Side Chair 39.75" x 19" x 18.75", item ARL4714 with 159 Poseidon fabric.

## Case

Alexander Cabinet 18" x 76" x 48", item ALXC14CS.

This group was constructed using our Wormy Maple with 400 Belair stain.





# ASPEN

## Table

### 5454B000 P1W EH

Round Top 54" x 54" x 1", item 5454B000 is a solid top. This top is bordered with the Rounded table edge profile, option EH and is supported by our Single Portland Pedestal, item P1W.

## Chairs

Aspen Side Chair 38.25" x 18" x 16.5", item ASP6004.

## Case

Arista Cabinet 18" x 60" x 60", item ARTC19CS.

This group was constructed using our Rustic Cherry with 113 Michaels stain.







# AVA



## Table

### 4272A212 P2F EE

Rectangular Top 42" x 72", item 4272A212 extends to 96" length with two 12" leaves. This top is bordered with our Standard table edge profile, option EE, and is supported by our Double Aurora Pedestal, item P2F.

## Chairs

Ava Side Chair, item AVA6714 with 161 Ivory fabric – 41" x 20" x 18".

Ava Arm Chair, item AVA6712 with 161 Ivory fabric – 41" x 22.5" x 18".

## Case

Waterford Hutch, item WATC23HS – 14.5" x 67" x 48",  
and Waterford Buffet, item WATC23BS – 20" x 64" x 36".

This group was constructed using our Rustic Cherry with 402 Mocha stain.

*This chair has been modified since this photo. The stretchers are now 3.125" from the floor to stretcher.*





# BAKERSFIELD

## Table

### 4260A118 P2D EC

Rectangular Top 42" x 60" x 1", item 4260A118 extends to 78" length with one 18" leaf. This top is bordered with the Beveled table edge profile, option EC and supported by our Double Norfolk Pedestal, item P2D.

## Chairs

Bakersfield Side Chair 36" x 17.75" x 16.5", item BAK2604.

## Case

Stafford Buffet 44" x 70" x 17", item STFC18BS.

This Table Top, Chair Seats, Buffet Top, Drawers and Doors are made of Elm with 113 Michaels stain. All other pieces are Maple with our 230 Onyx stain.







# BECK



## Table

### 4836K112 L09 EE

Cosmo Top 48" x 36" x 1", item 4836K112 extends to 48" length with one 12" leaf. This top is bordered with the Standard table edge profile, option EE and is supported by our Victor Table Legs, item L09.

## Chairs

Beck Side Chair 36.25" x 20" x 16.75", item BEC4614. Seats are covered with 184 Rumford fabric.

These items were constructed using our solid Maple with 304 Charcoal stain.

Beck





# BENTLY

## Table

### 4260H212 P2J ED

Clipped Corner Top 42" x 60" x 1", item 4260H212 extends to 84" length with two 12" leaves. This top is bordered with the Chamfer table edge profile, option ED and is supported by our Double Phoenix Pedestal, Item P2J.

## Chairs

Bently Side Chair 41.5" x 19" x 17.75", item BTY0504. Bently Arm Chair 41.5" x 23.25" x 17.75", item BTY0502.

This set is shown in solid Rustic Cherry with our 104 Seely stain.







# BLAIR



## Table

### 4260F118 L04 EA

Concave Top 42" x 60" x 1", item 4260F118 extends to 78" length with one 18" leaf. This top is bordered with the Waterfall table edge profile, option EA and is supported by our Royal Concord Table Legs, item L04.

## Chairs

Blair Side Chair 39.25" x 17.75" x 16.25", item BLR5304.

Blair Arm Chair 39.25" x 24.5" x 16.25", item BLR5302.

These items were constructed using our solid Maple with 400 Belair stain.

Blair





# BLAKE

## Table

### 4272N000 MP2P

Naturele (faux live edge) Top 42" x 72" x 2", item 4272N000. Lincoln Base, item MP2P.

## Chairs

Blake Arm Chair 42" x 23.75" x 17.75", item BLA3202.

Blake Side Chair 42" x 20" x 17.75", item BLA3204.

60" Naturele Bench, item NAT6504BL60.

This set is crafted of Walnut with our 100 Natural stain.







# BOWBACK



## Table

### 4260B212 P2B EH

Oval Top 42" x 60" x 1", item 4260B212 extends to 84" length with two 12" leaves. This top is bordered with the Rounded table edge profile, option EH and is supported by our Double Country Pedestal, item P2B.

## Chairs

Bowback Side Chair 41" x 18.5" x 18", item BOW1404. Bowback Arm Chair 41" x 24" x 18", item BOW1402.

These items were constructed using our solid Oak with 104 Seely stain.





# BRINKLEY

## Table

### 4266G118 L09 EK

Boat Shape Top 42" x 66" x 1", item 4266G118 extends to 84" length with one 18" leaf. This top is bordered with the Curved table edge profile, option EK and is supported by our Victor Table Legs, item L09.

## Chairs

Brinkley Side Chair 42.5" x 18.5" x 17.75", item BNK5804.

Brinkley Arm Chair 42.5" x 24.5" x 17.75", item BNK5802.

## Case

Stafford Buffet 17" x 70" x 44", item STFC18BS.

Table top, chair seats and top rails, buffet top, doors, and drawers were constructed using our Quartersawn Oak with 113 Michaels stain. Remaining is constructed in solid Maple with 230 Onyx stain.







# BROOKLYN



## Table

### 6042A118 L09 EA

Rectangular Top 60" x 42" x 1", item 6042A118 extends to 60" length with one 18" leaf. This top is bordered with the Waterfall table edge profile, option EA and is supported by our Victor Table Legs, item L09.

## Chairs

Brooklyn Side Chair 37.75" x 17.75" x 16.5", item BRO3514.  
36" Squire Bench, item SQR6214BL36. Seats are covered with 95 Tried and True Turquoise fabric

This set is shown in Wormy Maple with 100 Natural stain.





# CLASSIC SHAKER

## Table

### 4260A212 L04 ED

Rectangular Top 42" x 60" x 1", item 4260A212 extends to 84" length with two 12" leaves. This top is bordered with the Chamfer table edge profile, option ED and is supported by Royal Concord Table Legs, item L04. The table top includes the Classic Shaker Table Inlay. Inlays must be ordered for tables, they are not standard.

## Chairs

Classic Shaker Side Chair 42.25" x 19.25" x 17.75" with standard inlays, item CSH0304. Classic Shaker Arm Chair 42.25" x 22.5" x 17.75" with standard inlays, item CSH0302.

## Case

Highland Buffet 18" x 54" x 36", item HLDC02BS.

These items were constructed using our solid Quartersawn Oak with 113 Michaels stain.







# CLEVELAND



**Table**  
**4848B000 P1A EA**

Round Top 48" x 48" x 1", item 4848B000. This top is bordered with the Waterfall table edge profile, option EA and is supported by our Single Cadiz Pedestal, item P1A.

**Chairs**

Cleveland Side Chair 38.25" x 17.75" x 16.25", item CLV5214. Seats are covered with 161 Ivory fabric.

**Case**

Metro Buffet 17" x 52" x 36", item METC13BS.

Table and chairs are constructed in our Wormy Maple with 401 Cider stain. Buffet is solid Maple with 400 Belair stain.





# CONTEMPO

## Table

### 4848B000 P1H ED

Round Top 48" x 48" x 1", item 4848B000 is a solid top with 111 Boston stain. This top is bordered with the Chamfer table edge profile, option ED and is supported by our Single Olympus Pedestal, item P1H with 3P PRT Black Paint Rub Thru.

## Chairs

Contempo Side Chair 40.5" x 17.75" x 16.75", item CON2104 with 111 Boston stain on seat, and 3P PRT Black Paint Rub Thru on frame.

This set is shown in solid Maple.







# DEXTER



## Table

### 4266F118 L07 EA

Concave Top 42" x 66" x 1", item 4266F118 extends to 84" length with one 18" leaf. This top is bordered with the Waterfall table edge profile, option EA and is supported by our Harrison Table Legs, item L07.

## Chairs

Dexter Side Chair 38.25" x 17.75" x 16.25", item DEX5114. Seats are covered with 184 Rumford fabric.

## Case

Dara Cabinet 20" x 48" x 74", item DARC20CS.

Table top and cabinet top are constructed in our solid Oak with 304 Charcoal stain. Remaining is with 320 Sand stain.







# FRANKLIN

## Table

### **4272PA000SM P2R EE**

Rectangular Smooth Plank Top 42" x 72" x 2", item 4272PA000SM is a solid top. This is bordered with the Standard table edge profile, option EE and is supported by our Double Barley Pedestal, item P2R.

## Chairs

Franklin Side Chair 40" x 19" x 17.75", item FKN0714. Seats are upholstered with 163 Pepper fabric.

These items were constructed using our Rustic Cherry with 111 Boston stain.







# FRESNO



## Table

### 4260K112 L07 EE

Cosmo top 42" x 60" x 1", item 4260K112 extends to 72" length with one 12" leaf. The top is bordered with our Standard table edge profile, option EE and is supported by our Harrison Table Legs, item L07.

## Chairs

Fresno Side Chair 37.75" x 17.75" x 16.5", item FRE2504.

This set was crafted with a two tone finish. The chair frames and table base are Maple with our 230 Onyx stain. The seats and table top are Elm with our 317 Gravel stain.

*Fresno*





# GATHERING

## Table

### 4848B112 P1V EE

Round Top 48" x 48" x 1", item 4848B112 extends to 60" with one 12" leaf (not shown). This top is bordered with our Standard table edge profile, option EE and is supported by the Single Syracuse Pedestal, item P1V.

## Chairs

Gathering Side Chair 41.75" x 17.75" x 17.5", item GAT3404.

This set is constructed of solid Oak with our 113 Michaels stain.







# GRACE



## Table 4284N000 MP2U

Naturelle (faux live edge) Top 42" x 84" x 2", item 4284N000. This top is supported by our Caspian Pedestal, item MP2U.

## Chairs

Grace chair 36.25" x 21.75" x 19.5", item GRA4314. Two chairs are covered in 209 Tusk fabric and two in 208 Alabaster fabric, no nailheads.

This set is constructed of solid Rustic Cherry with our 400 Belair stain.

## Case

Essex Hutch, item ESSC25HS – 18" x 45" x 56", and Essex Buffet, item ESSC25BS – 18" x 45" x 28". These pieces are constructed of solid Maple with our 403 Indigo stain and custom hardware, item 625-320SBZ.





# HANNAH

## Table

### 6048SSA112 P206 EH

Rectangular Top 60" x 48" x 1", item 6048SSA112 extends to 60" length with one 12" leaf. This top is bordered with our Rounded table edge profile, option EH and is supported by our Sydney Storage Counter Height Pedestal.

## Chairs

Hannah Side 24" Stationary Bar Stools 44.25" x 18" x 17", item HAN5904BC24.

This set is shown in Rustic Cherry with our 7992 Asbury stain.







# HARTFORD



## Table

### 4260G212 P2D ED

Boat Shape Top 42" x 60" x 1", item 4260G212 extends to 84" length with two 12" leaves and is shown with 104 Seely Stain. This top is bordered with the Chamfer table edge profile, option ED and is supported by our Double Norfolk Pedestal, item P2D shown with 230 Onyx stain.

## Chairs

Hartford Side Chair 40.25" x 18.75" x 17.5", item HFD1114 and Hartford Arm Chair 40.25" x 23.25" x 17.5", item HFD1112 are both shown with our 230 Onyx stain. Seats are covered with 34 Scribble Whiskey fabric.

This set is shown in solid Maple.





# HUDSON

## Table

### 4266A112 P2I EC

Rectangular Top 42" x 66" x 1", item 4266A112 extends to 78" length with one 12" leaf. This top is bordered with the Bevel table edge profile, option EC and is supported by our Double Kansas Pedestal, item P2I.

## Chairs

Hudson Side Chair 40.5" x 18.5" x 16.75", item HUD2414. Chairs are covered with 103 Berlin Pumice fabric.

These items were constructed using our solid Maple with 304 Charcoal stain.







# JACKSON



## Table

### 4272A000 P2J EE

Rectangular Top 42" x 72" x 1", item 4272A000 is a solid top and is shown with 104 Seely stain. This top is bordered with Standard table edge profile, option EE and is supported by our Double Phoenix Pedestal, item P2J with 3P PRT Black Paint Rub Thru.

## Chairs

Jackson Side Chair 41.5" x 19.5" x 18.25", item JAC4904 is shown with 104 Seely Stain on the seat and our 3P PRT Black Paint Rub Thru on the frame.

This set is shown with solid Rustic Cherry on the table top and chair seats, and solid Maple for the rest with our Heritage Distressing.





# JORDAN

## Table

### 3860A118 L07 EE

Rectangular Top 38" x 60" x 1", item 3860A118 extends to 78" length with one 18" leaf. This top is bordered with the Standard table edge profile, option EE and is supported by our Harrison Table Legs, item L07.

## Chairs

Jordan Side Chair 38.75" x 18.75" x 17", item JOR3714. Jordan Arm Chair 38.75" x 23.25" x 17", item JOR3712. Seats are covered with 166 Midnight fabric.

## Case

Harper Cabinet 19.5" x 60" x 60", item HPRC06CS.

This set is shown in solid Maple with 317 Gravel stain.







# KEYSTONE



## **Table** **4260A118 L16 EK**

Rectangular Top 42" x 60" x 1", item 4260A118 extends to 78" length with one 18" leaf. This top is bordered with the Curved table edge profile, option EK and is supported by our Adele Table Legs, item L16.

## **Chairs**

Keystone Side Chair 41" x 17.75" x 16.75", item KEY2004. Keystone Arm Chair 41" x 24.25" x 16.75", item KEY2002.

## **Case**

Arista Cabinet 18" x 60" x 60", item ARTC19CS.

These items were constructed using our solid Rustic Cherry with 7992 Asbury stain.





# KIRBY

## Table

### 5454B000 P10 EE

Round Top 54" x 54" x 1", item 5454B000. This top is bordered with the Standard table edge profile, option EE and is supported by our Single Chatham pedestal, item P10.

## Chairs

Kirby Side Chair 34.5" x 18.75" x 16.5", item KRB7014. Seats and backs are covered in Tumbleweed Leather with Silver Nailhead Trim.

This set is shown in solid Rustic Oak with 402 Mocha stain.







# LANCE



## Table

### 4230DLA212 L06 EH

Drop Leaf Rectangular Top 42" x 30" x 1", item 4230DLA212 extends to 50" length when two 10" drop leaves are raised. There are two standard 12" leaves. When all leaves are used the table top is 42" x 74" x 1". This top is bordered with the Rounded table edge profile, option EH and is supported by our Kitchen Table Legs, item L06.

## Chairs

Lance Side Chair 38.75" x 17.75" x 17.5", item LAN1704. Lance Arm Chair 38.75" x 22.25" x 17.5", item LAN1702.

These items were constructed using our solid Rustic Cherry with 7992 Asbury stain.





# LANDON

## Table

### 3860G000 L01 ED

Boat Shape Top 38" x 60" x 1", item 3860G000. This top is bordered with the Chamfer table edge profile, option ED and is supported by our Norfolk Table Legs, item L01.

## Chairs

Landon Side Chair 38.25" x 17.75" x 16.25", item LND5414 covered with 155 Seiche Indigo fabric.

This set is shown in solid Maple with our 151 Generations stain.







# LORRAINE



## Table

### 4272A212 P20 EE

Rectangular Top 42" x 72" x 1", item 4272A212 extends to 96" length with two 12" leaves. Top is bordered with our Standard table edge profile, option EE and supported by the Double Chatham Pedestal, item P20.

## Chairs

Lorraine Side Chair 41.75" x 19.25" x 17.75", item LOR2904.

Lorraine Arm Chair 41.75" x 22" x 17.75", item LOR2902.

## Case

Versailles Sideboard 20" x 68" x 41", item VERC38SS.

This group is crafted using Maple with our 1P PRT White Paint Rub Thru for the pedestal and solid Rustic Oak with our 401 Cider stain for the rest.





# MANHATTAN

## Table

### 3860A118 P2H EF

Rectangular Top 38" x 60" x 1", item 3860A118 extends to 78" length with one 18" leaf. This top is bordered with the Shaker table edge profile, option EF and is supported by our Double Olympus Pedestal, item P2H.

## Chairs

Manhattan Side Chair 35.75" x 17.75" x 16.75", item MAN2714. Seats are covered with 104 Berlin Sandstone fabric.

This set is shown in solid Maple with 230 Onyx stain.







# MARQUE



## Table

### 4266G118 P2I EF

Boat Shaped Top 42" x 66" x 1", item 4266G118 extends to 84" length with one 18" leaf. This top is bordered with our Shaker table edge profile, option EF and is supported by our Double Kansas Pedestal, item P2I.

## Chairs

Marque Side Chair 40.5" x 17.75" x 16.75", item MRQ4014, Marque Arm Chair 40.5" x 24" x 16.75", item MRQ4012. Chairs are upholstered with our 155 Seiche Indigo fabric.

## Case

Zayne Sideboard 20" x 67" x 36", item ZYNC08SS.

This set is shown in Maple with our 304 Charcoal stain.





# MILAN

## Table

### 5454PB000GR P1T EJ

Round Plank with Grooves Top 54" x 54" x 2", item 5454PB000GR is a solid top bordered with our Round Plank top standard EJ edge and supported by the Single Eleanor Pedestal, item P1T.

## Chairs

Milan Side Chair 39" x 18" x 16.5", item MIL6514. Seats are covered with 175 Khaki fabric.

This group is crafted using Oak with our 401 Cider stain.







# NEW ENGLAND



## Table 4260A212 L02 ED

Rectangular Top 42" x 60" x 1", item 4260A212 extends to 84" length with two 12" leaves and is shown with 104 Seely stain. This top is bordered with the Chamfer table edge profile, option ED and is supported by our Reeded Table Legs, item L02 with 3P PRT Black Paint Rub Thru.

## Chairs

New England Side Chair 41.5" x 18.75"

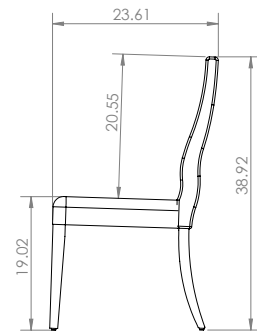
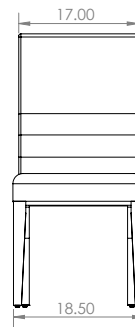
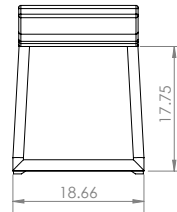
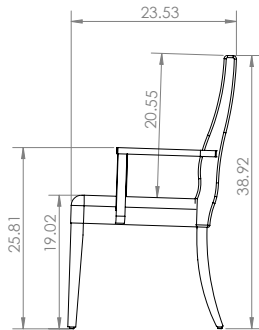
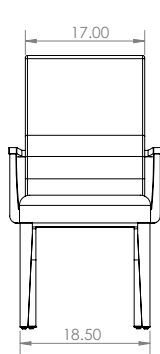
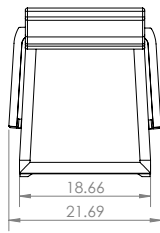
x 17.5", item NEN0404 and New England Arm Chair 41.5" x 23.25" x 17.5", item NEN0402 are both shown with 104 Seely stain on the seat and our 3P PRT Black Paint Rub Thru on the frame.

## Case

Jamestown Buffet 18" x 54" x 36", item JTNC01BS with 104 Seely stain on top and the body in 3P PRT Black Paint Rub Thru.

This set is shown in solid Maple with Vintage Distressing.





# NORWALK

## Chairs

Norwalk Side Chair 39" x 18.75" x 17.75", item NOR7114.

Norwalk Arm Chair 39" x 21.75" x 17.75", item NOR7112

Chair is covered with 172 Ecu fabric.

This chair is crafted using Maple with our 113 Michaels stain.







# PIERRE

## Table 4260G118 P2Q EH

Boat Shaped Top 42" x 60" x 1", item 4260G118 extends to 78" with one 18" leaf. This top is bordered with the Rounded table edge profile, option EH and is supported by our Double Evanston Pedestal, item P2Q.

## Chairs

Pierre Side Chair 40.5" x 17.75" x 16.75", item PRR0914. Pierre Arm

Chair 40.5" x 24.25" x 16.75", item PRR0912. Seats are upholstered with 108 Zander Indigo fabric.

## Case

Albany Corner Buffet 22" x 51" x 33", item ALBC17BX is topped with the Albany Corner Hutch 22" x 51" x 51", item ALBC17HX.

These items were constructed using our Cherry with 113 Michaels stain.







# PRESTIGE

## Table

### 4260G212 L05 ED

Boat Shaped Top 42" x 60" x 1", item 4260G212 extends to 84" length with two 12" leaves. This top is bordered with the Chamfer table edge profile, option ED and is supported by our Shaker Table Legs, item L05.

## Chairs

Prestige Side Chair 41" x 19" x 17.75", item PRE0604. Prestige Arm Chair 41" x 23.25" x 17.75", item PRE0602.

## Case

New England Cabinet 20" x 60" x 60", item NENC04CS.

These items were constructed using our solid Maple with 111 Boston stain.







# RIALTO

## Table

### 4872A118 P2Z EE

Rectangular Top 48" x 72" x 1", item 4872A118 extends to 90" length with one 18" leaf. This top is bordered with the Standard table edge profile, option EE and is supported by our Double Rialto Pedestal, item P2Z.

## Chairs

Rialto Side Chair 43" x 21.75" x 17.5", item RIA6304. Rialto Arm Chair 43" x 24.5" x 17.5", item RIA6302.

This set is shown in Rustic Cherry with our 7992 Asbury stain.







# RIETTA

## Table

### 4260A212 L03 EE

Rectangular Top 42" x 60" x 1", item 4260A212 extends to 84" length with two 12" leaves. This top is bordered with the Standard table edge profile, option EE and is supported by our Rietta Table Legs, item L03.

## Case

Highland Sideboard 18" x 54" x 36", item HLDC02SS shown with custom hardware 289-BRN, 291-BRN.

This set is shown in our solid Maple with 230 Onyx stain.

## Chairs

Rietta Side Chair 41.5" x 19" x 17.75", item RTT0814. Seats are covered with 104 Berlin Sandstone fabric.







# ROCHESTER



## Table

### 4266A118 L17 EK

Rectangle Top 42" x 66" x 1", item 4266A118 extends to 84" length with one 18" leaf. This top is bordered with our Curved table edge profile, option EK and supported by our Farmhouse Table Legs, item L17.

## Chairs

Rochester Side Chair 41.5" x 19" x 17.25", item RCH1214. Seats are covered with 172 Ecru fabric.

## Case

Kennedy Sideboard 20" x 70" x 36", item KDYC15SS. Shown with ring pulls only 920240-904.

Table top, chairs, sideboard top are solid Oak with our 402 Mocha stain and Vintage Distressing. Table base and case body are solid Oak with 1P SAV White Paint Savannah Glazing.





# ROYAL CONCORD

## Table

### 4872D212 P2R EE

Queen Anne Top 48" x 72" x 1", item 4872D212 extends to 96" length with two 12" leaves. This top is bordered with the Standard table edge profile, option EE and is supported by our Double Barley Pedestal, item P2R.

## Chairs

Royal Concord Side Chair 47.5" x 19" x 17.75", item RCN0104. Royal Concord

Arm Chair 47.5" x 23.75" x 17.75", item RCN0102.

## Case

Highland Buffet 18" x 54" x 36", item HLDC02BS is topped with the Highland Hutch 15" x 57" x 48", item HLDC02HS.

These items were constructed using our solid Rustic Cherry with 7992 Asbury stain.







# SEDONA



## Table

### 4260A118 L05 ED

Rectangular Top 42" x 60" x 1", item 4260A118 extends to 78" length with one 18" leaf. This top is bordered with the Chamfer table edge profile, option ED and is supported by our Shaker Table Legs, item L05.

## Chairs

Sedona Side Chair 41.75" x 20" x 17.25", item SED4114. Sedona Arm

Chair 41.75" x 22.75" x 17.25", item SED4112. Seats are covered with Pecan leather.

## Case

Sedona Sideboard 18" x 62" x 36", item SEDC41SS.

These items were constructed using our solid Quartersawn Oak with 113 Michaels stain.





# SINCLAIR

## Table

### 4276ZIA P2K

Rectangular Zinc Top 42" x 76" x 2", item 4276ZIA is shown with nailhead trim. This top is supported by our Double Madisyn Pedestal, item P2K.

## Chairs

Sinclair Side Chair 42" x 20" x 17", item SIN5514.

60" Squire Bench, item SQR6214BL60.

Chair backs and seats are upholstered with our 176 Preston fabric.

The table base and chairs in this set were crafted of solid Maple with 3P PRT Black Paint Rub Thru.







# SINGLE-X



## Table

### 6060B000 P1J EA

Round Top 60" x 60" x 1", item 6060B000 is a solid top with 151 Generations stain. This top is bordered with the Waterfall table edge profile, option EA and is supported by our Single Phoenix Pedestal, item P1J with 26P Blue Sage paint.

## Chairs

Single X Side Chair 40.5" x 18.75" x 17.25", item SGL2214 with 26P Blue Sage paint. Seats are covered with 166 Midnight fabric.

This set is shown in solid Maple.





# SOHO

## Table

### 4260K000 L07 EE

Cosmo Top 42" x 60" x 1", item 4260K000 is a solid top. This top is bordered with the Standard table edge profile, option EE and is supported by our Harrison Table Legs, item L07.

## Chairs

Soho Side Chair 40.25" x 19.75" x 16.5", item SOH3914. Seats are covered with 95 Tried & True Turquoise fabric.

This set is shown in solid Maple with 227 Rich Cherry stain.







# STELLA



## Table

### 4872K000 P2E EE

Cosmo Top 48" x 72" x 1", item 4872K000 is a solid top bordered with our Standard table edge profile, option EE and supported by our Double Cambridge Pedestal, item P2E.

## Chairs

Stella Side Chair 40.5" x 18.5" x 16.75", item STL6604.

Stella Arm Chair 40.5" x 22.25" x 16.75", item STL6602

## Case

Alexander Cabinet 18" 60" x 60", item ALXC14CS

Alexander Vintners Hutch 9" x 76" x 45", item ALXC14HS.

This set is shown in solid Rustic Cherry with our 113 Michaels stain.





# VENICE

## Table

### 4272PA000SM P2T EE

Rectangular Smooth Plank Top 42" x 72" x 2", item 4272PA000SM is a solid top bordered with our Standard table edge profile, option EE and supported by our Double Eleanor Pedestal, item P2T.

## Chairs

Venice Side Chair 43.25" x 21.75" x 17.5", item VEN6204.

This set is constructed in Wormy Maple. The table top and chair seats show our 400 Belair stain and the remaining pieces have 402 Mocha stain.







# WESTON



## Table

### 5454B112 P1F EE

Oval Top 54" x 54" x 1", item 5454B112 extends to 66" length with one 12" leaf. Top is bordered with our Standard table edge profile, option EE and supported by our Single Aurora Pedestal, item P1F.

## Chairs

Weston Side Chair 37" x 17.75" x 15.75", item WES6804.

Weston Arm Chair 37" x 24" x 15.75", item WES6802.

## Case

Castlebar Server 20" x 54" x 36", item CASC22SS.

Chair Seats, Table top, and server top are solid Wormy Maple with our 400 Belair stain. Remaining is solid Maple with 402 Mocha stain.



## CONSTRUCTION STYLE

All chairs styles can be custom built to fit your space. We offer Side Chairs, Arm Chairs, Stationary 24" or 30" Bar Stools, Swivel 24" or 30" Bar Stools, Backless Bar Stools, Side Benches, or Benches with Arms. Choose from the many options below to customize your seating. These are shown in the Adams chair style, but can be built using any chair style shown in this catalog.



Side Chair,  
item ADM1904



Arm Chair,  
item ADM1902



Upholstered Side Chair,  
item ADM1914



24" Stationary Barstool,  
option BC24  
(24" seat height)



30" Stationary Barstool,  
option BC30  
(30" seat height)



Alsace stationary and swivel barstools are built with a rounded base and are not available without arms.



The Grace chair is available as a stationary barstool as shown only, no swivel base is available.



24" Swivel Barstool,  
option SW24  
(24" seat height)



30" Swivel Barstool,  
option SW30  
(30" seat height)

## OPTIONS

When ordering any custom seating options, simply add the option number after the item number of your chosen chair style.

## ADDITIONAL SEATING

No specific chair style needs to be chosen for these items. They are built exactly as shown with your choice of wood, stain, fabric, and finishing options.



24" Stationary Backless Barstool  
item BKL6704BC24  
Available in 24" and 30" heights.



24" Swivel Backless Barstool  
item BKL6704SW24  
Available in 24" and 30" heights.



24" Rounded Backless Barstool, item BKL6804BC24  
Available in 24" and 30" heights and as Stationary or Swivel. Wood seat is standard. Shown as BLK6814BC24.



24" Saddle Barstool,  
item SAD6604BC24



30" Saddle Barstool,  
item SAD6604BC30

The pictures and colors in our guide were printed as accurately as possible, but may not be perfect representations. Actual samples should be viewed before ordering.



## OPTIONS

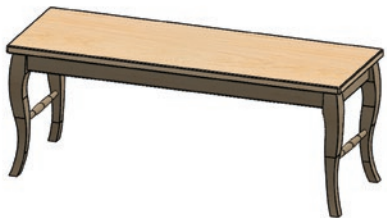
All Benches and Benches with Arms can also be made with Fabric or Leather seats. Standard seat material depends on the chosen chair style. For example, the Hudson style standard construction includes a fabric back and seat, so a Hudson bench will also have a fabric back and seat.



### SQUIRE BENCH

18" Squire Bench, item SQR6214BL18  
36" Squire Bench, item SQR6214BL36  
48" Squire Bench, item SQR6214BL48 (shown)  
60" Squire Bench, item SQR6214BL60

Standard with fabric seats. Leather or wood seat is also available.



### BACKLESS BENCH

36" Bench, option BL36  
48" Bench, item ADM1904BL48 (shown)  
60" Side Bench, option BL60



### COUNTER HEIGHT BACKLESS BENCH

36" Bench, item B246904BL36  
48" Bench, item B246904BL48 (shown)  
60" Bench, item B246904BL60



### SIDE BENCH

36" Side Bench, option BN36  
48" Side Bench, item ADM1914BN48 (shown)  
60" Side Bench, option BN60



### BENCH WITH ARMS

36" Bench with Arms, option BN36  
48" Bench with Arms, item ADM1912BN48 (shown)  
60" Bench with Arms, option BN60



### NATURELE (FAUX LIVE EDGE) BENCH

60" Bench, item NAT6504BL60 (shown)  
Naturale benches are available in 48", 60", and 72" lengths.



### PLANK BENCH

60" Plank Bench Smooth, item PSM6404BL60 (shown)  
Plank benches are available in 36", 48", 60", and 72" lengths.  
Can be ordered with Grooves (PGR63) or with smooth top (PSM64).



# Dining Chairs

## AT A GLANCE



### ADAMS

Side Chair, item ADM1904  
38.25" x 17.75" x 16.75"  
Arm Chair, item ADM1902  
38.25" x 17.75" x 16.75"

*Adams chairs are only available in Maple, Wormy Maple, Elm/Maple, Rustic Cherry, and Cherry. See page 6.*



### ALSACE

Side Chair, item ALS2804  
41" x 20.5" x 19.25"  
Arm Chair, item ALS2802  
41" x 22.5" x 19.25"

*This chair is only available in Maple. Wood seat is standard. Shown as ALS2814. See page 7.*



### ARLO

Side Chair, item ARL4714  
39.75" x 19" x 18.75"  
Arm Chair, item ARL4712  
39.75" x 21.75" x 18.75"

*Due to Chair Design No Inlays are Available. Fabric Seat and Back included. See page 8.*



### ASPEN

Side Chair, item ASP6004  
38.25" x 18" x 16.5"  
Arm Chair, item ASP6002  
38.25" x 24.25" x 16.5"

*See page 9.*



### AVA

Side Chair, item AVA6704  
41" x 20" x 18"  
Arm Chair, item AVA6702  
41" x 22.5" x 18"

*Wood seat is standard. Shown as AVA6714. See page 10.*



### BAKERSFIELD

Side Chair, item BAK2604  
36" x 17.75" x 16.5"  
Arm Chair, item BAK2602  
36" x 24.25" x 16.5"

*See page 11.*



### BECK

Side Chair, item BEC4604  
36.25" x 20" x 16.75"  
Arm Chair, item BEC4602  
36.25" x 22.5" x 16.75"

*Wood seat is standard. Shown as BEC4614. See page 12.*



### BENTLY

Side Chair, item BTY0504  
41.5" x 19" x 17.75"  
Arm Chair, item BTY0502  
41.5" x 23.25" x 17.75"

*See page 13.*



### BLAIR

Side Chair, item BLR5304  
39.25" x 17.75" x 16.25"  
Arm Chair, item BLR5302  
39.25" x 24.5" x 16.25"

*See page 14.*



### BLAKE

Side Chair, item BLA3204  
42" x 20" x 17.75"  
Arm Chair, item BLA3202  
42" x 23.75" x 17.75"

*See page 15.*



### BOWBACK

Side Chair, item BOW1404  
41" x 18.5" x 18"  
Arm Chair, item BOW1402  
41" x 24" x 18"

*Due to Chair Design No Inlays are Available. Not available with fabric or two-toned. See page 16.*



### BRINKLEY

Side Chair, item BNK5804  
42.5" x 18.5" x 17.75"  
Arm Chair, item BNK5802  
42.5" x 24.5" x 17.75"

*See page 17.*



# Heirloom Quality Chairs for Every Style



## BROOKLYN

Side Chair, item BRO3504  
37.75" x 17.75" x 16.5"  
Arm Chair, item BRO3502  
37.75" x 24.25" x 16.5"

*Due to Chair Design No Inlays are Available.  
See page 18.*



## CLASSIC SHAKER

Side Chair, item CSH0304  
42.25" x 19.25" x 17.75"  
Arm Chair, item CSH0302  
42.25" x 22.5" x 17.75"  
*Inlays are standard. See page 19.*



## CLEVELAND

Side Chair, item CLV5204  
38.25" x 17.75" x 16.25"  
Arm Chair, item CLV5202  
38.25" x 24.5" x 16.25"  
*Wood seat is standard. Shown as CLV5214.  
See page 20.*



## CONTEMPO

Side Chair, item CON2104  
40.5" x 17.75" x 16.75"  
Arm Chair, item CON2102  
40.5" x 24.25" x 16.75"  
*See page 21.*



## DEXTER

Side Chair, item DEX5104  
38.25" x 17.75" x 16.25"  
Arm Chair, item DEX5102  
38.25" x 24.5" x 16.25"

*Wood seat is standard. Shown as DEX5114.  
See page 22.*



## FRANKLIN

Side Chair, item FKN0704  
40" x 19" x 17.75"  
Arm Chair, item FKN0702  
40" x 23.75" x 17.75"

*Due to Chair Design No Inlays are Available.  
Standard with wood seat. Shown as FKN0714.  
See page 23.*



## FRESNO

Side Chair, item FRE2504  
37.75" x 17.75" x 16.5"  
Arm Chair, item FRE2502  
37.75" x 24.25" x 16.5"  
*Due to Chair Design No Inlays are Available.  
See page 24.*



## GATHERING

Side Chair, item GAT3404  
41.75" x 17.75" x 17.5"  
Arm Chair, item GAT3402  
41.75" x 22.25" x 17.5"  
*Due to Chair Design No Inlays are Available.  
See page 25.*



## GRACE

Chair, item GRA4314  
36.25" x 21.75" x 19.5"  
*Fabric seats and back are standard.  
See page 26.*



## HANNAH

Side Chair, item HAN5904  
42.5" x 18.5" x 17.75"  
Arm Chair, item HAN5902  
42.5" x 24.5" x 17.75"  
*Wood seat is standard. Shown as HAN5914.  
See page 27.*



## HARTFORD

Side Chair, item HFD1104  
40.25" x 18.75" x 17.5"  
Arm Chair, item HFD1102  
40.25" x 23.25" x 17.5"  
*Wood seat is standard. Shown as HFD1114.  
See page 28.*



## HUDSON

Side Chair, item HUD2414  
40.5" x 18.5" x 16.75"  
Arm Chair, item HUD2412  
40.5" x 23.25" x 16.75"  
*Fabric Seat and Back are included. Due to Chair  
Design No Inlays are Available. See page 29.*



# Dining Chairs

## AT A GLANCE



### JACKSON

Side Chair, item JAC4904  
41.5" x 19.5" x 18.25"  
Arm Chair, item JAC4902  
41.5" x 26.25" x 18.25"

*Due to Chair Design No Inlays are Available.  
See page 30.*



### JORDAN

Side Chair, item JOR3704  
38.75" x 18.75" x 17"  
Arm Chair, item JOR3702  
38.75" x 23.25" x 17"

*Wood seat is standard. Shown as JOR3714.  
See page 31.*



### KEYSTONE

Side Chair, item KEY2004  
41" x 17.75" x 16.75"  
Arm Chair, item KEY2002  
41" x 24.25" x 16.75"

*See page 32.*



### KIRBY

Side Chair, item KRB7004  
34.5" x 18.75" x 16.5"  
Arm Chair, item KRB7002  
34.5" x 23.25" x 16.5"

*Standard with wood seat and fabric back.  
Shown as KRB7014. See page 33.*



### LANCE

Side Chair, item LAN1704  
38.75" x 17.75" x 17.5"  
Arm Chair, item LAN1702  
38.75" x 22.25" x 17.5"

*Due to Chair Design No Inlays are Available.  
See page 34.*



### LANDON

Side Chair, item LND5404  
38.25" x 17.75" x 16.25"  
Arm Chair, item LND5402  
38.25" x 24.5" x 16.25"

*Wood seat is standard. Shown as LND5414.  
See page 35.*



### LORRAINE

Side Chair, item LOR2904  
41.75" x 19.25" x 17.75"  
Arm Chair, item LOR2902  
41.75" x 22" x 17.75"

*See page 36.*



### MANHATTAN

Side Chair, item MAN2704  
35.75" x 17.75" x 16.75"  
Arm Chair, item MAN2702  
35.75" x 24.25" x 16.75"

*Wood seat is standard. Shown as MAN2714.  
See page 37.*



### MARQUE

Side Chair, item MRQ4014  
40.5" x 17.75" x 16.75"  
Arm Chair, item MRQ4012  
40.5" x 24" x 16.75"

*See page 38.*



### MILAN

Side Chair, item MIL6504  
39" x 18" x 16.5"  
Arm Chair, item MIL6502  
39" x 24.25" x 16.5"

*See page 39.*



### NEW ENGLAND

Side Chair, item NEN0404  
41.5" x 18.75" x 17.5"  
Arm Chair, item NEN0402  
41.5" x 23.25" x 17.5"

*See page 40.*



### NORWALK

Side Chair, item NOR7114  
39" x 18.75" x 17.75"  
Arm Chair, item NOR7112  
39" x 21.75" x 17.75"

*Fabric seat and back are standard.  
See page 41.*



# Heirloom Quality Chairs for Every Style



## PIERRE

Side Chair, item PRR0904  
40.5" x 17.75" x 16.75"  
Arm Chair, item PRR0902  
40.5" x 24.25" x 16.75"

Wood seat is standard. Shown as PRR0914.  
See page 42.



## PRESTIGE

Side Chair, item PRE0604  
41" x 19" x 17.75"  
Arm Chair, item PRE0602  
41" x 23.25" x 17.75"

Due to Chair Design No Inlays are Available.  
See page 43.



## RIALTO

Side Chair, item RIA6304  
43" x 21.75" x 17.5"  
Arm Chair, item RIA6302  
43" x 24.5" x 17.5"

See page 44.



## RIETTA

Side Chair, item RTT0804  
41.5" x 19" x 17.75"  
Arm Chair, item RTT0802  
41.5" x 23.75" x 17.75"

Wood seat is standard. Shown as RTT0814.  
See page 45.



## ROCHESTER

Side Chair, item RCH1204  
41.5" x 19" x 17.25"  
Arm Chair, item RCH1202  
41.5" x 23.25" x 17.25"

Wood seat is standard. Shown as  
RCH1214. See page 46.



## ROYAL CONCORD

Side Chair, item RCN0104  
47.5" x 19" x 17.75"  
Arm Chair, item RCN0102  
47.5" x 23.75" x 17.75"

See page 47.



## SEDONA

Side Chair, item SED4104  
41.75" x 20" x 17.25"  
Arm Chair, item SED4102  
41.75" x 22.75" x 17.25"

Wood seat is standard. Shown as  
SED4114. See page 48.



## SINCLAIR

Side Chair, item SIN5514  
42" x 20" x 17"  
Arm Chair, item SIN5512  
42" x 23.75" x 17"

Fabric seat and back is standard.  
See page 49.



## SINGLE-X

Side Chair, item SGL2204  
40.5" x 18.75" x 17.25"  
Arm Chair, item SGL2202  
40.5" x 23.25" x 17.25"

Wood seat is standard. Shown as  
SGL2214. See page 50.



## SOHO

Side Chair, item SOH3914  
40.25" x 19.75" x 16.5"  
Arm Chair, item SOH3912  
40.25" x 22.5" x 16.5"

Fabric Seat and Back included.  
See page 51.



## STELLA

Side Chair, item STL6604  
40.5" x 18.5" x 16.75"  
Arm Chair, item STL6602  
40.5" x 22.25" x 16.75"

See page 52.



## VENICE

Side Chair, item VEN6204  
42.75" x 21.75" x 17.5"  
Arm Chair, item VEN6202  
42.75" x 24.75" x 17.5"

See page 53.



## WESTON

Side Chair, item WES6804  
37" x 24" x 15.75"  
Arm Chair, item WES6802  
37" x 17.75" x 15.75"

See page 54.



# Dining Tables



TABLES



## Rectangular Tops

*Shown on pages 8, 11 & 18.*

*See price list for current available sizes.*



## Oval/Round Tops

*Shown on pages 6, 9 & 21.*

*See price list for current available sizes.*



## Select Your Perfect Table Top



### Queen Anne Tops

*Shown on page 47.*

*See price list for current available sizes.*



### OPTIONS

Tables with 2 or more leaves come standard with a center leg.

When ordering more than two leaves, two leaves come standard with an apron and the others do not, due to self storing purposes.



### Concave Tops

*Shown on pages 14 & 22.*

*See price list for current available sizes.*



# Dining Tables



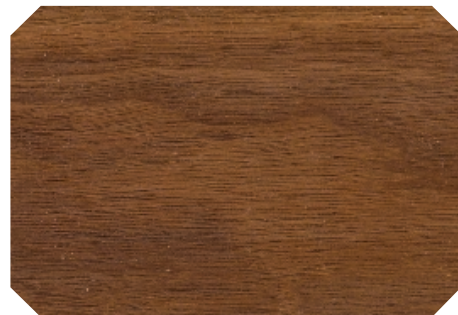
TABLES



## **Boat Shaped Tops**

*Shown on pages 17, 28 & 43.*

*See price list for current available sizes.*



## **Clipped Corner Tops**

*Shown on page 13.*

*See price list for current available sizes.*



## Select Your Perfect Table Top



### Cosmo Tops

The Cosmo tops have a more modern feel. This is rectangular in shape with a flush apron underneath, for a seamless look.

*Shown on pages 12 & 24.*

*See price list for current available sizes.*

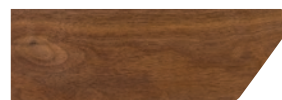
## EDGE PROFILES



Waterfall – EA



Large Traditional – EB



Bevel – EC



Chamfer – ED



Standard – EE



Shaker – EF



Ogee – EG



Rounded – EH



Small Traditional – EI



Curved – EK



# Dining Tables



## Drop Leaf top, item 4230DLA212

These tops are 42" x 30" with two 10" drop leaves and two 12" leaves. When drop leaves are raised the table is 42" x 50", and when all leaves are used the table top is 74" long.

*Shown on page 34.*



## Sydney Storage table

This storage table is the perfect place to keep those extra tablecloths or seasonal centerpieces. The pictured set was crafted in our counter height option, item P206 but is also available as a standard height or our bar height option which is 12" higher than a standard base. This versatile base is only available with the tops listed below.

**4242SSA000** – 42" x 42" solid top with Sydney storage base

**5454SSA000** – 54" x 54" solid top with Sydney storage base

**5442SSA112** – 54" x 42" top with one 12" leaf and Sydney storage base

**6060SSA000** – 60" x 60" solid top with Sydney storage base

**6048SSA112** – 60" x 48" top with one 12" leaf and Sydney storage base

**6666SSA000** – 66" x 66" solid top with Sydney storage base

**6654SSA112** – 66" x 54" top with one 12" leaf and Sydney storage base

*Shown on page 27.*



## Select Your Perfect Table Top



### **Naturele (Faux Live Edge) Table Tops**

These are available in 42" or 48" width and 72", 84", 96", or 108" length. The grain runs along the length of the Naturele (faux live edge) table. *Shown on pages 15 & 26.*

#### **OPTIONS**

Finishing options are stain, paint, two tone finishes, paint rub thru, glazing, and light, vintage, or plantation distressing.



# Dining Tables



## Rectangular Plank Table Tops

The grain runs across the width of the table with leaves. Grain runs lengthwise on all solid tables. Another option is our breadboard leaves. The leaves are on each end and the leaf grain runs widthwise. All sizes of solid tables and tables with leaves are available with or without grooves.

*Shown on pages 23 & 53. See price list for current available sizes.*

## OPTIONS

Finishing options are stain, paint, two tone finishes, paint rub thru, glazing, and light, vintage, or plantation distressing.



## Select Your Perfect Table Top



### Round Plank Table Tops

Available Sizes are 42", 48", 54", 60", and 72". These can be with grooves or with smooth tops.  
*Shown on page 39.*

#### OPTIONS

Finishing options are stain, paint, two tone finishes, paint rub thru, glazing, and light, vintage, or plantation distressing.



# Dining Tables



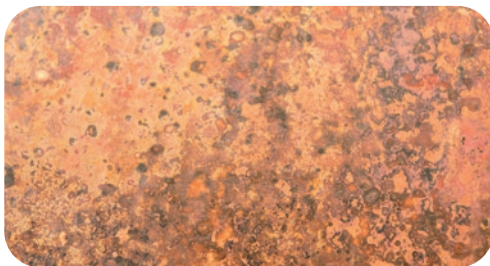
## HAMMERED COPPER TOPS



**ROUND:** Available sizes are 42", 48", 54", 60", or 72". These sizes are all kept in stock except the 72" round top. There will be an extended lead time for the 72" round top.  
Round tops are 1.5" thick.  
*Shown on page 7.*

### NOTE

Round copper tops can only use a pedestal base, no legs. When using legs on rectangular or square copper tops an apron will be added and the table will be elevated by 1".



**RECTANGLE:** Available size is 42" x 76" and this is kept in stock. Rectangle tops are 2.25" thick.



**SQUARE:** Available size is 48" and this is kept in stock.  
Square tops are 1.5" thick.



## Select Your Perfect Table Top

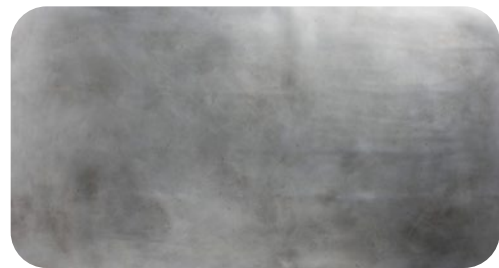
### ZINC TOPS

**ROUND:** Available sizes are 42", 48", or 54". Zinc tops are standard as smooth tops with no nail head trim. Available options are distressed tops and nail head trim.



#### NOTE

Round zinc tops can only use a pedestal base, no legs. When using legs on rectangular, or square zinc tops an apron will be added and the table will be elevated by 1".



**RECTANGLE & SQUARE:** Available sizes are: 48" x 48" and 42" x 76". Zinc tops are standard as smooth tops with no nail head trim. Available options are distressed tops and nail head trim. *Shown on page 49.*



## TABLE LEGS



**NORFOLK**  
Item L01



**REEDED**  
Item L02



**RIETTA**  
Item L03



**ROYAL CONCORD**  
Item L04



**SHAKER**  
Item L05



**KITCHEN**  
Item L06



**HARRISON**  
Item L07



**MISSION**  
Item L08



**VICTOR**  
Item L09



**ADELE**  
Item L16



**FARMHOUSE**  
Item L17



**GATLIN**  
Item L18



**KINGSVILLE**  
Item L20



**NEWPORT**  
Item L21



**WINSTON**  
Item L25

*Legs L20 - L25 are 40% larger and can only accommodate Square and Rectangle Shapes.*



# *The Base Makes the Table*

## TABLE BASES



**SOPHIA** Item P1N



**CAMBRIDGE** Item P2E



**CASPIAN** Item MP2U



**LINCOLN** Item MP2P



# Dining Tables



## TABLE BASES



**SINGLE AURORA** Item P1F



**DOUBLE AURORA** Item P2F



**SINGLE BARLEY** Item P1R



**DOUBLE BARLEY** Item P2R



**SINGLE CADIZ** Item P1A



**DOUBLE CADIZ** Item P2A



**SINGLE CHATHAM** Item P1O



**DOUBLE CHATHAM** Item P2O



**SINGLE COUNTRY** Item P1B



**DOUBLE COUNTRY** Item P2B



**SINGLE ELEANOR** Item P1T



**DOUBLE ELEANOR** Item P2T



**SINGLE EVANSTON** Item P1Q



**DOUBLE EVANSTON** Item P2Q



**SINGLE KANSAS** Item P1I



**DOUBLE KANSAS** Item P2I



## *The Base Makes the Table*



**SINGLE MADISYN** Item P1K



**DOUBLE MADISYN** Item P2K



**SINGLE NORFOLK** Item P1D



**DOUBLE NORFOLK** Item P2D



**SINGLE OLYMPUS** Item P1H



**DOUBLE OLYMPUS** Item P2H



**SINGLE PHOENIX** Item P1J



**DOUBLE PHOENIX** Item P2J



**SINGLE PORTLAND** Item P1W



**DOUBLE PORTLAND** Item P2W



**SINGLE PROVENCE** Item P1Y



**DOUBLE PROVENCE** Item P2Y



**SINGLE RIALTO** Item P1Z



**DOUBLE RIALTO** Item P2Z



**SINGLE SYRACUSE** Item P1V



**DOUBLE SYRACUSE** Item P2V



# Dining Cases



## ALBANY

**Albany Corner Hutch**, item ALBC17HX comes standard with A819-BN hardware. 22" x 51" x 51"

Shelving includes two adjustable glass shelves.

Standard with two lights.

**Albany Corner Buffet**, item ALBC17BX comes standard with A819-BN hardware. 22" x 51" x 33"

Shelving includes one adjustable wood shelf (no divider).

*Shown on page 42.*



CASES

## ALEXANDER

**Alexander Vintners Hutch**, item ALXC14HS. 9" x 76" x 45"

**Alexander Cabinet**, item ALXC14CS comes standard with 1586-WID hardware. 18" x 76" x 48"

Shelving includes one adjustable wood shelf behind each end door, one adjustable wood shelf behind two middle doors (no divider).

*Shown on pages 8 & 52.*





## Solid Wood Cases Crafted for You



### ARISTA

**Arista Cabinet**, item ARTC19CS comes standard with 1586-VB hardware. 18" x 60" x 60"

Arista Cabinet comes standard with glass doors on right and left side and a wood center door. Behind the upper glass doors are wine glass racks and the center is a wine bottle rack. Shelving includes 2 adjustable glass shelves behind each bottom glass door and 1 adjustable wood shelf behind the wood door. Standard with two lights. *Shown on pages 9 & 32.*



### CASTLEBAR

**Castlebar Server**, item CASC22SS with K6373-128-SIM hardware.

20" x 54" x 36"

Shelving includes two adjustable wood shelves (no divider). Standard with glass doors. *Shown on page 54.*



## COSMO CASES



**Cosmo Display**, item COSC05DS comes standard with P2143-SN; P2140-SN hardware. 18" x 58" x 68" Shelving includes three adjustable glass shelves per door in the long doors. Top center is open and has one adjustable glass shelf. Standard with glass on sides and three lights.



**Cosmo Server**, item COSC05SS comes standard with P2143-SN; P2140-SN hardware. 17" x 48" x 36" Shelving includes one long adjustable wood shelf (no dividers).



## Solid Wood Cases Crafted for You



### DARA

**Dara Cabinet**, item DARC20CS comes standard with K6373-128-SIM hardware. 20" x 48" x 74"  
Shelving includes two adjustable glass shelves (no divider).  
Standard with two lights. *Shown on page 22.*



### ESSEX

**Essex Hutch** item ESSC25HS – 18" x 45" x 56"  
Standard with 625320SN hardware. Shown with custom 625-320SBZ hardware. Standard with no lights. Shelving includes three adjustable wood shelves.

**Essex Buffet**, item ESSC25BS – 18" x 45" x 28"  
standard with 625-320SN hardware. Shown with custom 325-320SBZ hardware.  
Shelving includes one adjustable wood shelf.  
*Shown on page 26.*



### HARPER

**Harper Cabinet**, item HPRC06CS shown with 339-BRN; 290-BRN hardware. 19.5" x 60" x 60"  
Shelving includes three adjustable glass shelves behind each door. Standard with three lights.  
*Shown on page 31.*



# Dining Cases



## HIGHLAND CASES

**Highland Hutch**, item HLDC02HS comes standard with K749-DACM hardware.

15" x 57" x 48"

Shelving includes two long adjustable glass shelves (no dividers). When adding wine rack or plate holder, hutch will take on a different look.

Standard with two lights. *Shown on page 47.*



CASES



**Highland Sideboard**, item HLDC02SS

Standard hardware is K749-96B-DACM; K749-DACM.

18" x 54" x 36" Shelving includes one adjustable wood shelf behind each door.

*Shown on page 45.*



**Highland Buffet**, item HLDC02BS comes standard

with K749-DACM; K749-128-DACM; K749-96B-DACM hardware. 18" x 54" x 36" Shelving includes one adjustable wood shelf behind each door.

*Shown on page 19.*



# Solid Wood Cases Crafted for You

## JAMESTOWN CASES

**Jamestown Hutch**, item JTNC01HS comes standard with K417-DBN hardware.

16" x 58" x 48"

Shelving includes two long adjustable glass shelves (no dividers). When adding a wine rack or plate holder the hutch will take on a different look. Standard with two lights.



### MAKE IT YOUR OWN

Each case we build has a standard set of hardware that our designers have chosen to complement the style of that piece. But custom hardware can be requested, making your furniture truly one of a kind.

**Jamestown Buffet**, item JTNC01BS comes standard with K317-96-DBN; K417-DBN hardware.

18" x 54" x 36"

Shelving includes one adjustable wood shelf behind each door. *Shown on page 40.*





# Dining Cases



## KENNEDY

**Kennedy Sideboard**, item KDYC15SS comes standard with 920240-904; 22409-904 hardware. Shown with ring pulls only 920240-904.  
20" x 70" x 36"  
Shelving includes one adjustable wood shelf behind each door.  
*Shown on page 46.*



## METRO CASES

**Metro Hutch**, item METC13HS comes standard with 53005-FB hardware. 13" x 52" x 48"  
Shelving includes three adjustable glass shelves in each section. Standard with three lights.  
*Shown on page 20.*



**Metro Buffet**, item METC13BS comes standard with 53005-FB hardware. 17" x 52" x 36"  
Shelving includes one adjustable wood shelf behind each door. *Shown on page 20.*





## Solid Wood Cases Crafted for You



### NEW ENGLAND

**New England Cabinet**, item NENC04CS comes standard with 53005-FB hardware. 20" x 60" x 60"

Shelving includes one adjustable glass shelf behind each of the top three doors. Behind the lower left side door are three drawers and one adjustable wood shelf. Behind the center and right doors are two adjustable wood shelves per door. Standard with three lights. *Shown on page 43.*



### PARKER

**Parker Server**, item PARC21SS comes standard with K6373-128-SIM hardware. 18" x 66" x 36"  
*Shown on page 90.*



### RIALTO

**Rialto Server**, item RIAC63SS comes standard with K558-BL hardware. 18" x 66" x 36"  
Shelving includes one adjustable wood shelf behind each door.



# Dining Cases



## SEDONA

**Sedona Sideboard**, item SEDC41SS comes standard with 250-O; 215-O; 4007-O hardware. 18"x 62"x 36"

Shelving includes one adjustable wood shelf behind each end door and one adjustable wood shelf behind 2 middle doors (no divider). *Shown on page 48.*



## STAFFORD

**Stafford Buffet** item STFC18BS comes with K475-SN; K26-SN hardware. 17" x 70" x 44"

Shelving includes one adjustable wood shelf behind each set of doors. *Shown on pages 11 & 17.*



## Solid Wood Cases Crafted for You

### TUSCANY CASES

**Tuscany Hutch**, item TUSC36HS comes standard with 1976-DACM hardware. 19" x 71" x 52"  
Shelving includes two adjustable glass shelves in each section. Standard with glass on sides and three lights.

**Tuscany Corner Hutch**, item TUSC36HX comes standard with 1976-DACM hardware.  
18" x 42" x 52" Shelving includes three adjustable glass shelves. Standard with one light.



**Tuscany Corner Buffet**, item TUSC36BX comes standard with 1976-DACM hardware. 16" x 38" x 36"  
Shelving includes one adjustable wood shelf.



**Tuscany Buffet**, item TUSC36BS comes standard with 1977-DACM;1976-DACM hardware. 17" x 66" x 36"  
Shelving includes one adjustable wood shelf behind each end door and one adjustable wood shelf behind two middle doors (no divider).

**Tuscany Sideboard**, item TUSC36SS comes standard with 1977-DACM;1976-DACM hardware.  
17" x 66" x 36" Shelving includes one adjustable wood shelf in each section.



# Dining Cases



## URBAN CASES



**Urban Hutch**, item UBNC03HS comes standard with D523-SN hardware. 14" x 60" x 48"  
Shelving includes three adjustable glass shelves behind each door and two adjustable framed glass shelves in center opening.  
Standard with three lights.

CASES

**Urban Buffet**, item UBNC03BS comes standard with D523-SN hardware. 20" x 60" x 33"  
Shelving includes one adjustable wood shelf behind each door.





## Solid Wood Cases Crafted for You



### WATERFORD

**Waterford Hutch**, item WATC23HS measures 14.5" x 67" x 48".

Shelving includes three adjustable glass shelves in each section. Standard with two lights.

**Waterford Buffet**, item WATC23BS comes standard with K6373-128-SIM hardware.

20" x 64" x 36"

Shelving includes one adjustable wood shelf behind each set of doors. Standard with glass doors.

*Shown on page 10.*



### VERSAILLES

**Versailles Sideboard**, item VERC38SS comes standard with P3060-BI; P3061-BI hardware.

20" x 68" x 41"

Shelving includes two adjustable wood shelves behind each end door, and two adjustable wood shelves behind the two middle doors (no divider).

*Shown on page 36.*



### ZAYNE

**Zayne Sideboard**, item ZYNC08SS comes standard with A865-BN; A847-BN hardware. 20"x 67"x 36"

Shelving includes one adjustable wood shelf behind each set of doors. *Shown on pages 38 & 57.*

## STANDARD FEATURES



Our cases come standard with touch lighting. Our drawers all feature English Dovetail joints and undermount soft close full-extension drawer slides.

### OPTIONS

Finishing options are stain, paint, two tone finishes, paint rub thru, glazing, and distressing.

## ADDITIONAL OPTIONS



Hutches and buffets can be ordered separately. Any buffet can be ordered without a hutch. If a hutch is preferred this must be ordered as a separate item in addition to the buffet.



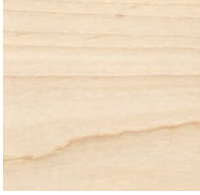
Wine Racks and Additional Wood or Glass Shelves are options. Adding a wine rack will give the hutch a different look.



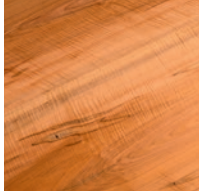


# Our Options

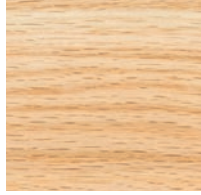
## WOOD OPTIONS Choose the species that complements your style.



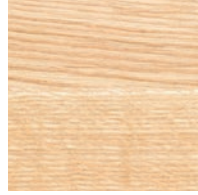
MAPLE



WORMY MAPLE



OAK



QUARTERSAWN  
OAK



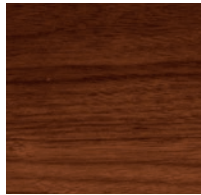
RUSTIC OAK



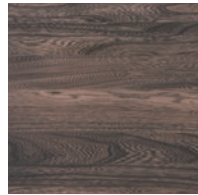
CHERRY



RUSTIC CHERRY



WALNUT



ELM

*The pictures and colors in our guide were printed as accurately as possible, but may not be perfect representations. Actual samples should be viewed before ordering.*

## STAIN & PAINT OPTIONS We have a large selection of stain and paint colors.



For samples of all our available stains and paints, see our Palettes by Winesburg Creation Center for wood samples. Wood samples should be viewed using the exact stain/paint color and wood species requested for the most accurate representation of color.

Please remember that wood, like all natural materials, has beautiful and unique characteristics in every piece. The grain of your chosen species will show variations in color throughout your furniture, regardless of the stain chosen. These characteristics are sought by designers as a mark of true quality and should be cherished by you as well. You'll find this natural beauty in every piece of our solid wood furniture.

*Make it Yours with a Flawless Finish*

## SAVANNAH GLAZES



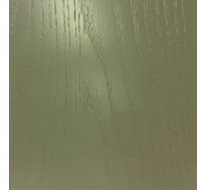
1P SAV - SAVANNAH  
GLAZE ON WHITE



21P SAV - SAVANNAH  
GLAZE ON SUNBURST



27P SAV - SAVANNAH  
GLAZE ON MINT



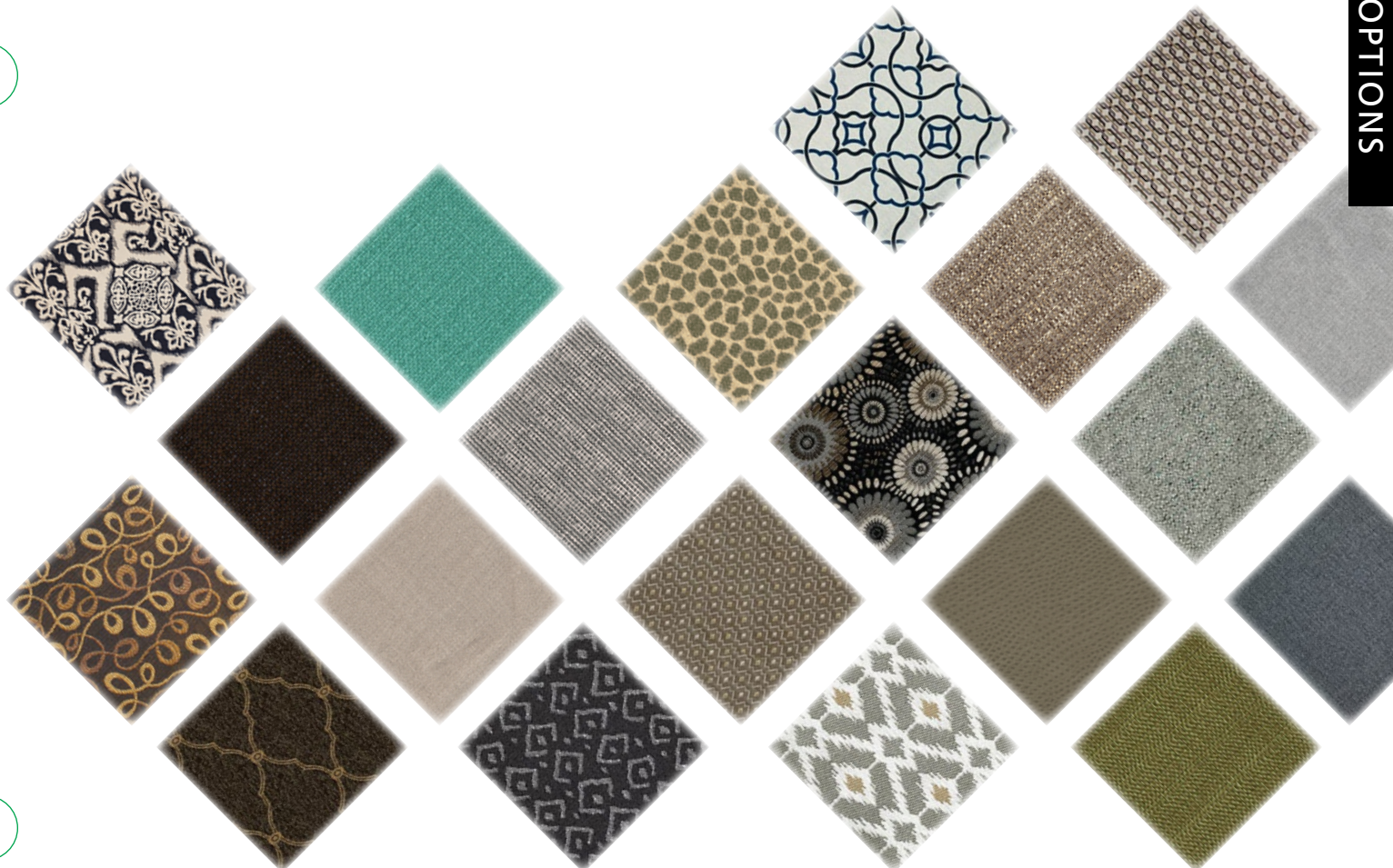
14P SAV - SAVANNAH  
GLAZE ON OLIVE GREEN



13P SAV - SAVANNAH  
GLAZE ON SKY BLUE

## UPHOLSTERY OPTIONS

Choose from a beautiful selection of hand picked designer fabrics, making your new furniture truly express your style. For a rich and sophisticated feel we also have leather. Upholstered seats not only add color and texture to your furniture, they also provide comfort. Dinner conversations can last well past dessert on these luxurious padded seats.



OPTIONS





# Our Options

## TWO TONE OPTIONS

Your furniture can be completely customized, right down to a different stain on the seat of the chair or a special paint color for your cabinet doors. Two colors of stain can be chosen or a paint and stain combination can be selected to give you the color that matches your decor, while keeping the warmth of that beautiful wood glow. You imagine it and we create it.



## The Finishing Touches

### PAINT RUB THRU

After your piece is painted, the edges are sanded to let the natural beauty of the wood peek through. This option offers a well-worn look for a more casual atmosphere.



OPTIONS

### Fine finishing is our last step, but it makes all the difference.

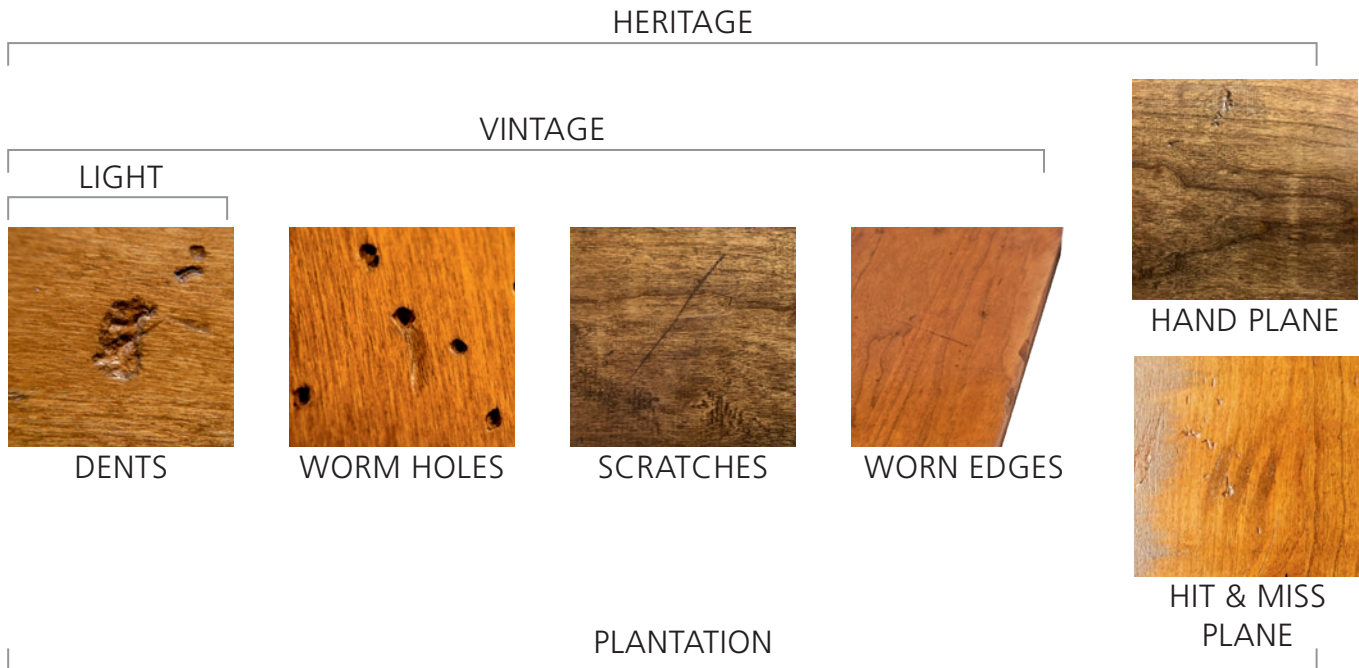
We apply our hand wiped stains and paints to multiple wood species. We then carefully apply the highest quality conversion varnish in our state of the art facility. These processes and our intense attention to detail provide a finish and quality that is unparalleled in the industry. Fine silk is delicate, but don't let our silky finish fool you. Our unique finish provides a dense wear surface that protects the wood surface against many enemies (nail polish remover, oil based paint, turpentine, alcohol, mustard, wine, solvents and many more food items and oils). Our finishing process is designed to safeguard the beauty and integrity of our heirloom quality furniture.



# Our Options

## DISTRESSING OPTIONS

All our distressing is done by hand at our state-of-the-art facility. We carefully add dents, scratches, and other distress marks, depending on the level chosen. Our furniture is distressed without compromising the quality or strength of each piece. We offer these four levels of distressing to match your individual expectations, and we take great pride in the ability to make any piece look brand new or 50 years old.



Light Distressing has only dents for a casual refined feeling.



Vintage Distressing has dents, worm holes, scratches, and worn edges for that comfortable, lived in look.



Heritage Distressing has dents, worm holes, scratches, worn edges, and hand plane marks so it looks like your brand new furniture is an heirloom piece that's been passed down for generations.  
*Not available on plank tops.*



Plantation Distressing has dents, worm holes, scratches, worn edges, and hit and miss plane marks so it looks like your brand new furniture is an heirloom piece that's been passed down for generations. Plantation is only available for plank tops.

# Nature's

## Designs

This guide will help you understand and select the correct hardwood type that fits into your style. Wood has many unique characteristics. Grain variations and natural markings are not flaws; they are part of the many features that give our hardwoods their beauty. Below are some insights into the kinds of hardwoods that we offer.

### Characteristics OF HARDWOODS

**MAPLE** — Its unique color, smooth grain, and strength make maple a popular choice among woodworkers of all types. When left in its natural state, maple can completely brighten a room, and when stained, it looks equally gorgeous and will dress up to suit any style. Maple also tends to be a preferred hardwood when looking at durability factors. It will show small closed knots and slight mineral streaks that become greatly enhanced when a stain is applied. All of our tabletops and chair seats are constructed of hard maple.

**WORMY MAPLE** — Sometimes referred to as Ambrosia Maple, Wormy Maple is a specific grade that is selected and sorted to showcase the color variations and mineral streaks caused by the Ambrosia beetle. These beetles infest live Maple trees, depositing their larvae that bore small "wormholes" and discolor the wood. The result is stunning. Colors and the flowing patterns vary significantly, from creamy white sapwood to beige or tan-colored heartwood, with dark brown streaks near small wormholes, no two boards are alike.

**CHERRY** — Harvested from cherry fruit trees, it is a hardwood famed for its durability and rich red/brown tones. Woodworkers highly prize cherry because of its smooth grain, flexibility, and brilliant color.

**RUSTIC CHERRY** — Featuring white, brown, and deep red colors with brown flecks, Rustic Cherry is a less refined version of traditional Cherry. It boasts natural knots and pits throughout each board with fine satin-smooth texture and a circular grain. Over time it will darken with exposure to light and heat.

**OAK** — Oak comes in a variety of hues, with a unique grain, which makes it one of the more recognizable species. A common choice, it has a long history of use around the home — dating back to pre-colonial times and remains every bit as prevalent today as it was then. Oak is a mainstay in traditional design, but its versatility allows modern pieces to come to life.

**RUSTIC OAK** — Featuring all the same qualities of traditional Oak, it offers other characteristics such as natural knots, more prominent mineral streaks, and natural wood checks. This hardwood can be significantly enhanced with stains to showcase traditional styles or put a twist on a fresh modern piece.

**ELM** — Its gray-white to light brown sapwood is very narrow while boasting a heartwood that is a vibrant red-brown to dark brown color. The grain can be straight but often is interlocked with a coarse texture.





# Care & Maintenance: Wood

## FOR YOUR FINE FURNITURE FINISH



We use Conversion Varnish, which is the most durable finish used in the furniture industry.

This finish has excellent resistance to foods, beverages, and common household chemicals, yet still must be properly cared for. Follow these simple guidelines to maintain the beauty of your furniture's finish for many generations.

**CLEANING** | Fingerprints, cooking residues, tobacco smoke, etc. will accumulate on any finished surface. They will not damage the finish, but should be removed occasionally to restore the finish to its original state. Wipe your furniture with a soft, damp cloth using a mild soap. Then wipe with a dry cloth.

**SPILLS** | Your finish is resistant to most household spills. However, long term exposure to moisture will damage any finish. If you see a spill, wipe it up right away.

**ABRASIVES** | Conversion Varnish offers a very hard mar resistant surface, but like any finish, it may still be scratched or damaged if not cared for properly. Do not place items with a rough finish on this surface as it will cause scratches. Do not use cleaners with abrasives, they may scratch the finish.

**DUST REMOVAL** | Dust build-up is simply from airborne particles of dust collecting on the finish. If not properly removed, this build-up may dull or even scratch the finish. Simply wipe the finish with a cloth dampened with a mild detergent or polish.

**EXCESSIVE EXPOSURE** | Heat, high humidity, direct sunlight or liquids can damage both the finish and the wood. Take care to avoid these conditions. If it's too hot to hold in your hands, don't place it on your furniture.

**DISCOLORATION** | Do not use cleaners containing bleach or ammonia. Ammonia may turn oak black and painted pieces yellow. Dyes and inks may discolor the finish. The ink and dyes from newsprint and plastic bags may penetrate into the finish when moist. Excessive waxing can cause moisture from a beverage can or glass to leave a milky white ring on the surface.

**TABLE LEAVES** | Leaves must be stored flat, do not stand on end. Table leaves are machined and sanded to have a secure fit. When inserted into tables, leaves may have a slight variation in color, grain, and fit. This is not a manufacturing defect. As with all variations in grain and color these are beautiful representations of the character of your furniture.

It should be noted that your new Conversion Varnish finish does not achieve its maximum performance properties for at least 30 days from the time it was applied, when kept in rooms with a temperature of at least 70 degrees.





# Care & Maintenance: Copper

## FOR YOUR FINE FURNITURE FINISH



### The copper contained with the furniture has been sealed with a clear paste wax.

In order to preserve the finish, and to keep the copper sealed and protected against spills and oxidations.

- Apply a thin coat of clear paste wax to the surface of the copper every few weeks, or as needed.
- Use any commercially available furniture or wood floor paste wax, let dry 5-10 minutes.
- Using a clean, dry cotton cloth, such as a kitchen towel, buff to a glossy sheen.
- When water no longer beads on the surface it's a good time to wax the copper.
- Dusting with a dry cotton cloth should be routine.
- Mild detergents can be used, but never use abrasive cleaners or metal polishes.
- Clean up spills as soon as possible.
- Use coasters, hot-pads and other materials to protect your copper table top from scratching and abrasion.
- Do NOT apply any metal polished to the copper. These will temporarily strip the patina of the copper.

#### **WHAT SHOULD I DO IF MY COPPER IS SCRATCHED OR STAINED? NOTHING!**

Moisture in the air, over time, will prove to heal the copper. Remember: the color tones noticeable in the copper used are fired directly into the copper itself; so, the best thing to do is leave the affected area alone. In the event the copper is scratched or stained, nine times out of ten the wax sealer was removed with it; let it be exposed to the air, until the copper begins to form a patina and regain its original finish. The amount of time your copper takes to do this will vary, but usually takes no more than a few weeks. (To speed up this process, use a catalyst such as salt water, lime juice, or other chemicals but should be tested first in small areas to see the effects on the copper itself.) Seal the affected area with paste wax once it has reached a desirable color to preserve and protect the finish.





# Care & Maintenance: Zinc

## FOR YOUR FINE FURNITURE FINISH



### Zinc is identified as the 30th element on the periodic chart.

Found deep in the earth's crust, it has a myriad of uses, both biological and industrial.

Zinc is considered a living metal, which means it can change with time to a bluish gray color.

It also reacts to anything spilled on it, like wine, and retains the stain color. At Palettes we make zinc more user friendly with a multi step process ending with the application of a commercial grade conversion varnish. This coating helps retain the zinc tabletop's own unique characteristics, while giving it a user friendly finish that locks in most of the original color and markings. This excellent coating is resistant to foods, beverages, and common household chemicals, however to maintain the beautiful appearance a few guidelines should be followed.



First,

- Basic care consists of just a damp cloth with warm water. If soap is used it should be a mild soap with no abrasives to avoid scratching the surface. This is a durable finish, but like any finish it can scratch if not cared for properly.
- Mild polish may be used 2-3 times a month. Be sure to use a reputable non-silicone polish.
- Zinc can bend, so be careful of blunt impact with sharp objects. Always keep a cutting board handy. It can also warp if objects hotter than 300 degrees are set directly on it, so it's best to keep protective trivets nearby.







PALETTES  
BY WINESBURG

---

Our dining furniture is completely handcrafted in Winesburg, Ohio, the Heartland of America. We emphasize "casual, yet elegant" styles from traditional to the eclectic, all made with superior craftsmanship and produced efficiently from timber that we harvest ourselves. We offer you a blank slate, an empty artist's palette, so you can create your personal masterpiece.





The pictures and colors in our guide were printed as accurately as possible, but may not be perfect representations. Actual samples should be viewed before ordering.



Scan To Watch Our Story On



[youtube.palettesbywinesburg.com](https://youtube.palettesbywinesburg.com)

2871 US Route 62  
Dundee, Ohio 44624  
[www.palettesbywinesburg.com](http://www.palettesbywinesburg.com)

COMMITTED TO HANDCRAFTING THE HIGHEST QUALITY PRODUCTS ON EARTH  
**AND LEAVING IT A BETTER PLACE**