

Nightstand

Caracole

This graceful nightstand pairs beautifully with the bed in this collection. Quartered Ash veneer has been inlaid in a chevron pattern and finished in Elegant Linen to create a large three-drawer piece that's the perfect height. The drawers open with custom contemporary oval metal pulls to reveal a glistening Pearl finish inside. Contemporary tapered feet complete the attractiveness of this serpentine-shaped piece.



SKU: C023-417-062

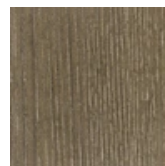
Dimensions in Inches: 36.0W × 19.0D × 30.0H

Dimensions in CM: 91.44W × 48.26D × 76.2H

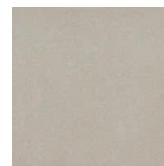
Features:

- Case finished in Elegant Linen.
- Front frame moulding highlighted in Soft Silver paint.
- Three drawers with undermount soft-close drawer guides.
- Drawer interiors in Pearl.

Finish:



Elegant Linen



Soft Silver Paint