

Hooker Furniture Bedroom Furniture Retreat Pole Rattan Dresser

Hooker Furniture
www.hookerfurniture.com

SKU: 6950-90202-99

Width: 68" (172.7 cm)

Depth: 19" (48.3 cm)

Height: 36" (91.4 cm)

Weight: 223 lb (100.4 kg)

Volume: 39.29 cu ft (1.1 m³)

Carton Width: 23 (58.4 cm)

Carton Length: 72" (182.9 cm)

Carton Height: 41 (104.1 cm)

Carton Weight: 260 lb (117 kg)

Availability: Contact us for availability details.

Type: Chests and Dressers, Double Dressers

Category: Bedroom

Collection: Retreat

Number of Shelves: 0

Number of Drawers: 6

Number of Leaves: 0

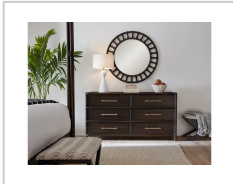
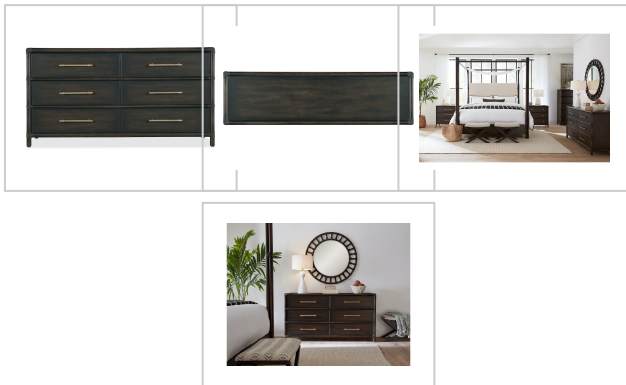
Style: Casual

Finish: Dark Wood

Brand: Hooker Furniture

Product Description: Inspired by tropical getaways, the Retreat Pole Rattan Dresser is a blend of natural materials in a laid-back, versatile design. Crafted of Oak and Maple Veneers with Rope accents, the dresser is finished in Black Sand, transparent by design to reveal the unique grain patterns in the wood veneer. Offering six self-closing drawers, the top left drawer has a removable felt liner and the top right drawer has a removable felt liner. The bottom two drawers are cedar-lined. The textured, pewter-colored bar pulls add a look of natural elegance.

Collection Features: Retreat is crafted with flat cut cathedral oak veneers and is characterized by two distinct finishes. Each finish is transparent by design to showcase the unique grain patterns of the veneer. Dune is light as sand and smooth as a shore after a receding tide. The second finish, Black Sand was inspired by the black silk sands found on the shorelines of exotic beaches of Maui and Tahiti. Inspired by serene, tropical resort destinations that offer an escape from the pressures of modern life, Retreat is designed to help consumers replicate these peaceful and tranquil environments within their home. The collection can be curated in two distinct personalities: Island Oasis and Modern Zen. Island Oasis intermingles both finishes, creating a tropical retreat-inspired vibe accentuated with organic details such as rope, cane, travertine and woven accents. Highlights include a dramatic pole-cane inspired poster bed, island influenced dining pieces and several upholstered accent pieces using printed and woven textiles and soft sage-toned leather. A few pops of accent finishes called Seagrass and Lagoon can be found on select pieces, enhancing the tropical mood of the collection. Modern Zen delivers a tranquil personality with a contemporary twist that showcases the Dune



finish, which is enhanced with accent items in Black Sand. Several pieces incorporate woven cane, dramatic split bamboo-inspired accents as well as Travertine stone. Highlights include a woven cane panel bed with clean modern lines and a variety of case pieces featuring geometric patterns and spa-inspired accents. Upholstered stationary and accent seating – available in sage and caramel tone leathers – complete the Zen narrative. Adding the finishing touch, the collection's hardware is custom designed to match each personality. Look for reed-inspired designs in Island Oasis and gently textured designs in Modern Zen. Both hardware options are featured in a soft pewter plated finish.

Status: Coming Soon

Finish Construction: Hooker Furniture utilizes a multiple-step finish process of up to 16 finish steps. This results in an unsurpassed clarity, depth and color richness and durability to our finishes. Through hand-craftsmanship such as rubbing and padding, our finishes feel as good as they look, with a smoothness that is delightful to the touch.

Finish: Black Sand: Transparent by design to showcase the unique grain patterns of the veneer, Black Sand was inspired by the black silk sands found on the shorelines of exotic beaches of Maui and Tahiti. Soft pewter bar pulls.

Features: Six self-closing drawers
Top left drawer has a removable felt liner
Top right drawer has a removable felt liner
Bottom two drawers are cedar-lined
Levelers
Rope accents

Material: Oak and Maple Veneers, Cedar and Rope

Drawer Construction: Hooker Furniture offers full height, full depth and full width drawers for maximum storage capacity. All drawers have strong, time-tested English or French dovetail construction, for years of problem-free use. Plywood drawer bottoms are attached to plywood drawer sides for strength and durability. Metal side guides or wood on wood guide systems operate smoothly.

Frame Construction: Hooker Furniture uses carefully chosen solid wood and select wood veneers over durable wood products in our furniture construction. Use of veneers enables more decorative looks unattainable with solid wood. Veneers are used over durable wood products such as medium density fiberboard (MDF) and particle board, made of renewable resources. MDF and particle board are used in quality furniture for areas that need to be stable, such as large surfaces. These durable wood products do not expand and contract with heat and cold and do not absorb moisture as much as solid wood, which results in stronger and longer-lasting furniture.