

## Product Specifications

<b>Style Number</b>	VV017	
<b>Construction</b>	Solid Polymer Core	
<b>Edge Profile</b>	Micro Bevel	
<b>Nominal Dimensions</b>	7" wide, 48" long	
	<b>US Units</b>	<b>Metric Units</b>
<b>Actual Product Width</b>	7.2"	18 cm
<b>Actual Product Length</b>	48.03"	122 cm
<b>Wear Layer Thickness</b>	20 mil (0.02")	0.5 mm
<b>Overall Product Thickness</b>	0.196"	5 mm
<b>Core Thickness</b>	0.157"	4 mm
<b>Attached Underlayment</b>	Attached Cork	
<b>Attached Underlayment Thickness</b>	0.039"	1 mm
<b>Finish</b>	UV Acrylic	
<b>Installation Methods</b>	Floating or Direct Glue	
<b>Profile</b>	Angle/Tap	
<b>Country of Origin</b>	Imported	

## Packaging

<b>Area per Box</b>	28.84 sq ft	3 sq m
<b>Pieces per Box</b>	12 pcs	
<b>Weight per Box</b>	48.61 lbs	22.04 kg
<b>Boxes per Pallet</b>	50 boxes	

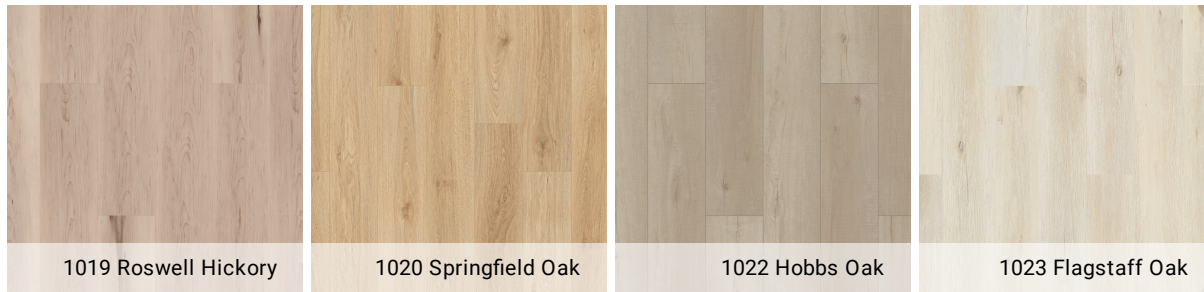


1001 Chesapeake Oak

## Colors



# COREtec Pro Plus 7"



## Performance

Static Load (ASTM F970)	Passes (Modified), *500 lbs
Residual Indentation (ASTM F1914)	Passes
Resistance to Heat (ASTM F1514)	Passes
Resistance to Light (ASTM F1515)	Passes
Resistance to Chemicals (ASTM F925)	Passes
Smoke Density (ASTM E662)	Passes
Radiant Panel (ASTM E648)	Passes, Class I
Slip Resistance (ASTM D2047)	ADA compliant

Test Reports may be included or listed by the manufacturing/inventory style number as opposed to the noted selling style number.

## Warranties

USF Lifetime

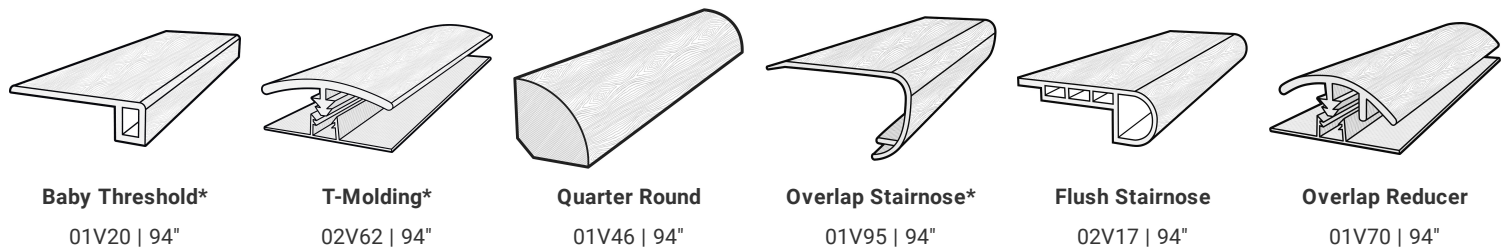
[Residential Resilient Limited Warranty - Defects, Wear, Waterproof, Petproof](#)

USF 15 Year Heavy Commercial

## Certifications

GreenGuard (Certification, Gold, Private Label) Certified

## Coordinating Trim



**Baby Threshold\***

01V20 | 94"

**T-Molding\***

02V62 | 94"

**Quarter Round**

01V46 | 94"

**Overlap Stairnose\***

01V95 | 94"

**Flush Stairnose**

02V17 | 94"

**Overlap Reducer**

01V70 | 94"

\*Packaged with molding track





# COREtec Pro Plus 7"

## Stair Tread

---



**Stair Tread**  
03Z70 | 48"