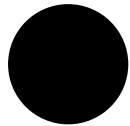


# RIA Bar Chair

# RATANA



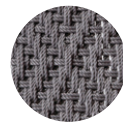
Frame: Aluminum  
Finish: Black



Weave: Durarope™  
Finish: Black



Weave: Durarope™  
Finish: Brown



Weave: Durarope™  
Finish: Grey

## FN58841BRN



Seat Height: 29.25"      Overall Height: 40"



Depth: 23.25"      Weight: 17 LBS



Width: 24.25"



## TECHNICAL INFORMATION

- Frame: Aluminum
- TIGER Drylac® (49 Series) powder coated aluminum frame
- Durarope™ – 4mm Polypropylene (PP) braided rope, a thermoplastic polymer
- Durarope™ tested for UV exposure: the Grey Scale is 4 to 5 under 3,000 hrs UV test
- Open armless frame
- Hoop-shaped back frame with net-like rope support
- Fully woven seat with 2x2 V-shaped pattern for comfort
- Chairs are compactly stackable, 6pcs per stack
- Max. weight load: 350 LBS per seat
- Contract quality
- For outdoor use only

Toll Free Phone: 866.919.1881

Toll Free Fax: 888.880.8209

Email: [sales@ratana.com](mailto:sales@ratana.com)

Website: [ratana.com](http://ratana.com)