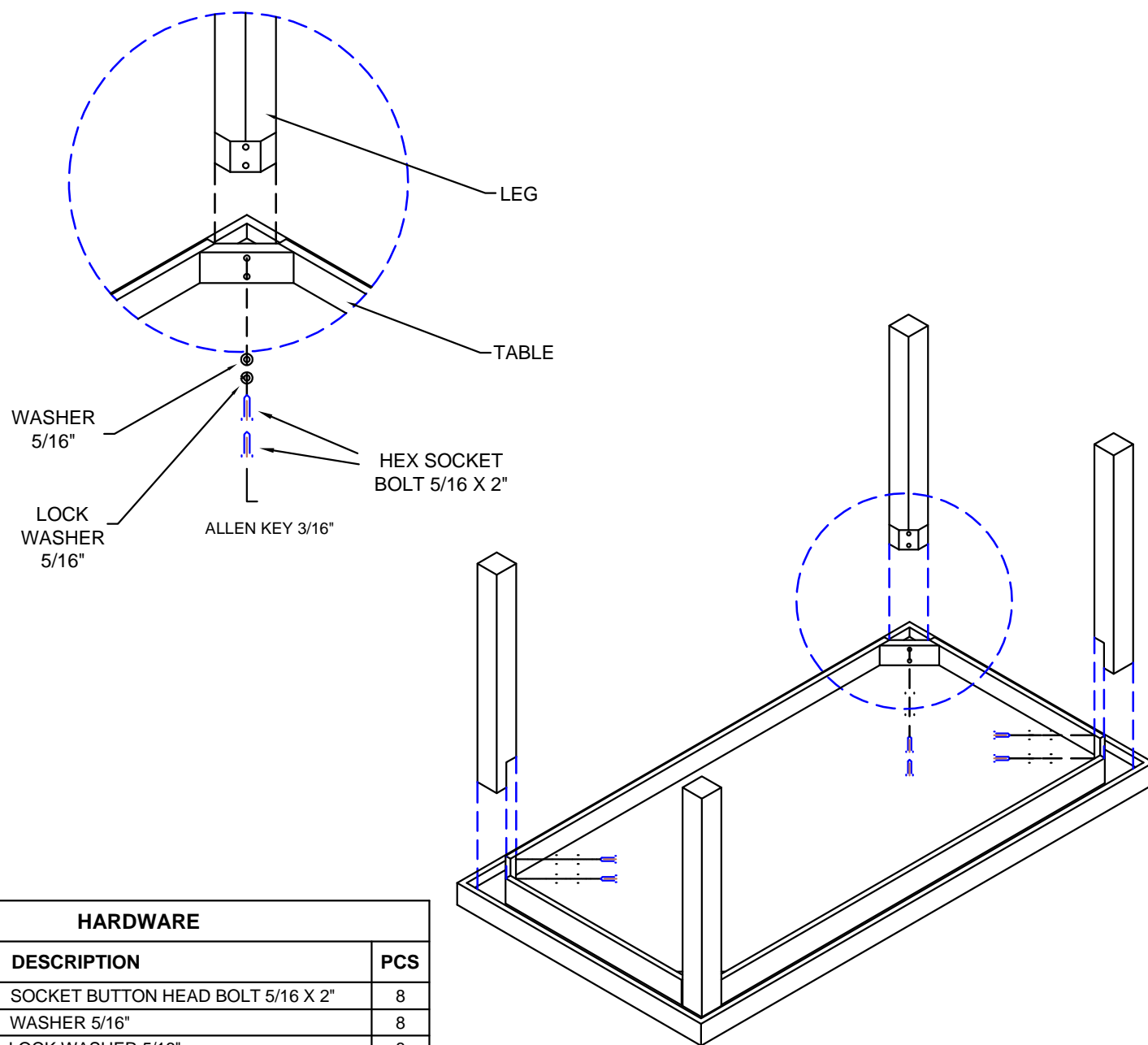




ASSEMBLY INSTRUCTIONS

I-MIX-C005

PRODUCT IMAGE SHOWN IS FOR ILLUSTRATIVE PURPOSES ONLY, SHOULD NOT BE TAKEN AS REFERENCE POINT



HARDWARE

DESCRIPTION	PCS
SOCKET BUTTON HEAD BOLT 5/16 X 2"	8
WASHER 5/16"	8
LOCK WASHER 5/16"	8
ALLEN KEY 3/16"	1

INSTRUCTIONS:

- 1.- USE A FLAT AND CLEAN SURFACE FOR ASSEMBLY.
- 2.- PLACE EACH LEG IN THE CORRECT CORNER, MATCHING THE SCREWS TO THE PRE-DRILLED HOLES.
- 3.- PLACE THE WASHERS AND INSERT THE BOLTS, MAKE SURE THE LEG IS COMPLETELY STRAIGHT.
- 4.- TIGHTEN THE CORRESPONDING BOLTS WITH THE ALLEN KEY.
- 5.- WITH SOMEONE ELSE'S HELP, PLACE THE TABLE IN THE DESIRED PLACE.

NOTE: APPLIES TO DINING TABLE & OCCASIONAL TABLES