

# FREMONT SLING OTTOMAN

Model: 4320-5100  
Collection: Fremont Sling  
Designer: John Caldwell

BROWN JORDAN™



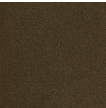
The Fremont Sling Ottoman features a powder coated aluminum frame that is virtually impervious to the elements. Fitted mesh is artfully crafted to conform to the shape of the body. Pair with the coordinating Fremont Sling Lounge Chair for optimized comfort and aesthetic.

## Specifications

Height (in)	15
Width (in)	29
Depth (in)	22.25
Seat Height (in)	15
Weight (lbs)	6

## Material Options

### Frame Finishes



Pompeian Gold

### Fabrics



Foster - Grade C