

THEODORE ALEXANDER

THE STEVE LEUNG COLLECTION





STEVE LEUNG

1957 Born in Hong Kong.

1975 Admitted to the Faculty of Architecture in The University of Hong Kong.

1978 Graduated with Bachelor of Arts in Architectural Studies from The University of Hong Kong; worked as the architectural assistant in a firm in the following year.

1981 Graduated with a bachelor degree in architecture from The University of Hong Kong with distinction; selected to represent Hong Kong in the UIA International Design Competition for Students held in Poland and won several awards.

1981-1987 Worked as Assistant Architect in Wong & Ouyang (HK) Ltd.; Building Surveyor in the Buildings Department of the Hong Kong Government; Project Manager in the Chevalier Group.

1983 Qualified as Registered Architect in Hong Kong.

1986 Obtained Master in Urban Planning degree from The University of Hong Kong.

1987 Established own architectural and urban planning consultancy.

1997 Restructured the company into Steve Leung Architects Ltd. (SLA) & Steve Leung Designers Ltd. (SLD)

2000 Set up branch office in Shanghai, China.

2001 Launched first furniture series "i-chi" with MAXXA.
Published first work collection "Minimalist Home by Steve Leung".

2003 Formed affiliate - Leung & Morita Designers Ltd. - with Yasumichi Morita, a well-known Japanese interior designer.
Published "Minimalist Home by Steve Leung II".

2005 Set up branch office in Guangzhou, China.

2006 Set up branch office in Beijing, China.

2007 Held "50 20 10 Steve Leung Design Exhibition Tour" in Hong Kong and Shanghai.
Published the work collection "STEVE LEUNG 50 20 10".
Launched "Steve Leung Textile Collection" with Hunter Douglas Hospitality.

2008 Launched home accessory series "Steve Leung Home Collection" with Saga Furs.
Set up "Steve Leung Travelling Scholarship".

2012 Launched first vanity collection "INKSTONE" with NEUTRA.
Launched first wallpaper collection "Steve Leung Collection" with Graham & Brown.
Held "Hong Kong Design Design Hong Kong" Exhibition in Hong Kong and "55 25 15 Steve Leung Design Roving Exhibition" in Beijing.
Published the work collection "STEVE LEUNG 55 25 15".

2013 Joined YOO, an international acclaimed design company founded by property entrepreneur John Hitchcox and world-renowned designer Philippe Starck, as the Creative Director of 'Steve Leung & YOO'.
Appointed as Executive Director of Design Committee at China National Interior Decoration Association (CIDA).

2014 70% of the shares of SLD and her subsidiaries have been successfully acquired by the Jangho Group to develop new business opportunities to provide a more comprehensive service offerings to clients.
Set up new brands including Steve Leung Hospitality Ltd. (SLH) and Steve Leung Exchange Ltd. (SLX).
Started "Think Globally Act Locally - Steve Leung Design Exhibition 2014" in Shenzhen.
Appointed as Co-Opted Board Member 2014-2015 of International Federation of Interior Architects/Designers (IFI).
Established C Foundation, the first self-supporting, non-governmental and non-profit making charitable foundation in China with interior designers from Hong Kong, Mainland China and Taiwan.

2015 Launched furniture collection "Nature's Grace Box" with Visionnaire at Salone del Mobile 2015.
Launched furniture collection "PIANPIAN" with HC28.
Set up Steve Leung Lifestyle Ltd. (SLL).
Elected as President-elect in 2015-2017 and President in 2017 of IFI.
Published the hospitality work collection "SAVOUR".
Awarded The Andrew Martin International Interior Designer of the Year Awards.
Listed in "50 Most Influential Person of in 2015" by INTERNI and "30 Most Influential Designers" by FORBES China.

2016 Launched handle collection "H377 Series SL Duemilasedici" with Fusital at Salone del Mobile 2016.
Appointed as Board of Directors by Hong Kong Design Centre (HKDC), with the approval of the Secretary for Commerce and Economic Development of Hong Kong SAR Government.
Appointed as Vice President of Expert Committee of Asia-Pacific Hotel Design Association (APHDA).
Awarded The Pinnacle Award for Lifetime Achievement in The A&D Trophy Awards 2016.
Appointed as Executive President in 2016 – 2017 of C Foundation.
Awarded the Honorary Fellowship by the Vocational Training Council.

2017 Appointed as President of IFI 2017 - 2019.
Launched furniture collection "Greenery" with Visionnaire at Salone del Mobile 2017.
Launched furniture collection "Luxury of Serenity" with Theodore Alexander in International High Point Market.
Launched vanity collection "Shan shui" with Villeroy & Boch.
Launched kitchen cabinet collection "Steve Leung Collection with Kohler.
Published the work collection "STEVE LEUNG 60 30 20".

2018 SLD Group is listed on the main board of the Hong Kong Stock Exchange (SEHK: 2262).
Launched furniture collection "UOVO" with HC28 Cosmopolitan.
Launched ceramics collection "Xuan" with Xin Zhong Yuan.
Launched "Screen Bed" with Savoir Beds.

2019 Launched mosaic collection "Lanterns" with Bisazza.
Launched two interior design schemes "Breeze / Zen" and "Vermilion" with Sanlorenzo Yacht.
Launched vanity collection "Taizu" with Victoria and Albert.
Launched vanity collection "HANSO" with Axent.

2000-2019 Awarded Andrew Martin International Design Awards, known as the Oscars of interior design profession for 15 times during the years.

2018-2019 Appointed as member of the Trade and Industry Advisory Board (TIAB) by the Secretary for Commerce and Economic Development of Hong Kong SAR Government. Appointed as Chairman of HKTDC Design, Marketing and Licensing Services Advisory Committee.



LUXURY OF SERENITY COLLECTION

The LUXURY OF SERENITY Collection is a first in a series of lifestyle groups planned and represents a whole home lifestyle statement.

“LUXURY OF SERENITY explores the concept of a personal retreat with an ambience of warmth and relaxation,” says Leung, adding “we have created a moment of tranquility, an indulgent personal space to relax, reinvigorate and enjoy life with family and friends. Throughout the collection inviting, gently-curved surfaces embody this moment with cossetting armchairs and expressive backrests to evoke the feeling of protection and sanctuary.”

LUXURY OF SERENITY has sumptuous and comfortable forms, elegant silhouettes and a restrained color palette. Materials encompass soft velvet, quilted leather, Italian marble, brushed finishes on nautical-grade stainless steel and hand-stitched detailing.

Signature pieces include the Covet Sofa, described by Leung as, beautifully upholstered in soft diamond stitched velvet fabric, subtly contrasting against a leather body. The Covet Sofa is complemented by the distinctive Allure Coffee Table featuring a “supple ribbed fabric and beveled marble top.” Additionally, the Pirouette Dining Table is a study in movement, with a substantial marble top perched on top of a tapering leather wrapped body decorated with spiraling diamond stitching.

LOOP OF CHARMS COLLECTION

SLD proudly presents the 2020 new furniture collection “Loop of Charms” with Theodore Alexander, following the success of the first collaboration “Luxury of Serenity”.

“Loop of Charms” draws inspiration from an element of everyday life– the circular frame through which we experience moments. It takes different forms in daily life - the invisible passing of time, a camera lens that captures occasions and emotions, windows that frame inspiring views – it is about continuous, significant moments in life. The designer has interpreted these moments through an interplay of circular forms and the open void, setting them in a contemporary, elegant language.

“We are capturing a paused instant within continuation for people to observe and ponder the neglected beauty of life”, the designer explained. “Loop is a ubiquitous detail; taking cue from that, we designed a versatile collection that blends effortlessly with different interiors. The colour palette is subtle - a range of dusky and earthy colours are used, fabricating a sophisticated, timeless aura.” A soft curve is a recurring feature in the collection, these gentle edges exude a sense of harmony yet understated indulgence that merge into the surroundings. Materials encompass fine leather, hand-finished brass, African mahogany, brushed finishes on aluminium and textured woven fabric. The loop-inspired curve, combined with minimal design highlights the unparalleled craftsmanship and exquisite finishing.

Signature pieces include the Loop Sofa, a sophisticated three-seater encapsulated in sepia, glossy leather. The Loop Sofa’s back and arms create one continual circular loop, embracing the sitters with an undisturbed flow of warmth and comfort. The end of the handle is decorated with the signature loop-inspired form in bronze metal trim and fine legs for a contemporary touch.

The Fulcrum Dinning Table is a playful relationship of physics and aesthetics. The tinted round glass top is encircled by brushed brass and sits gracefully on an exceptional round base where panels of leather are arranged in rhythm.

The Campanello Pendant Lights amplify the grace of the dining room by dint of their trumpet-shaped light shades, hanging over the dining table with light aluminium enclosed in russet leather.

The Debonair Mirror is another notable piece of the collection. Eleganza is a funky compilation of brass-framed mirrors in marble tinted glass, an adroit decorative piece that adds character to the space.



TABLE OF CONTENTS

| | |
|-----------------|-------|
| THE LIVING ROOM | 8-35 |
| THE DINING ROOM | 36-41 |
| THE BEDROOM | 42-51 |
| THE STUDY | 52-59 |
| ACCENTS | 60-61 |

RETREAT





COVET SECTIONAL

SLD451

Comprised of Corner Section, Armless Chair and Backless Chaise
Splayed Aluminium Legs with 'Heritage Bronze' Finish

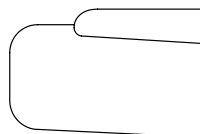
Shown in LE0321 Leather, Midnight-LE0324 Leather, Velvet Emerald-UP4945A Fabric, Poetic-UP4946A Fabric



CORNER CHAIR

SLD45021

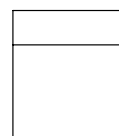
43¾ x 43¾ x 31½ in | 111.1 x 111.1 x 80 cm



LEFT BACKLESS CHAISE SECTION

SLD45022L

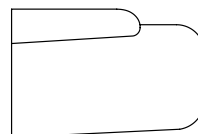
54¼ x 36¼ x 31½ in | 138.1 x 92 x 80 cm



ARMLESS CHAIR

SLD42008

23½ x 36¼ x 31½ in | 60 x 92 x 80 cm



RIGHT BACKLESS CHAISE SECTION

SLD45022R

54¼ x 36¼ x 31½ in | 138.1 x 92 x 80 cm





COVET SOFA II
SLD45011

Tight Diamond Quilted Upholstered Back
Wrapped Outside Back / Tight Seat with Four Throw Pillows
Solid Brushed Beech Seat Rails & Legs with Cigar Club Finish
Heritage Bronze Finish Legs

94½ x 36¼ x 31½ in | 240 x 92 x 80 cm
Seat height: 15¾ in (40 cm)



COVET SOFA
SLD45001

Diamond Quilted Tight Back / Leather Wrapped Outside Back
Four Throw Pillows / Oak Seatrails with Cigar Club Finish
Aluminum Legs with Heritage Bronze Finish

94½ x 36¼ x 31½ in | 240 x 92 x 80 cm
Seat height: 15¾ in (40 cm)



COVET SMALL SOFA
SLD45003

Diamond Quilted Tight Back / Leather Wrapped Outside Back
Four Throw Pillows / Oak Seat Rails with Cigar Club Finish
Aluminum Legs with Heritage Bronze Finish

78¾ x 33¾ x 31½ in | 200 x 86 x 80 cm
Seat height: 15¾ in (40 cm)



COVET DEEP DESIRE UPHOLSTERED CHAIR II
SLD42011

Tight Upholstered Back
Wrapped Outside Back / Tight Seat with Loose Throw Pillow
Solid Brushed Beech Seat rails & Legs with Cigar Club Finish
Heritage Bronze Finish Legs
33¾ x 35 x 27½ in | 86 x 88.9 x 70 cm
Seat height: 15¾ in (40 cm)



COVET DEEP DESIRE UPHOLSTERED CHAIR
SLD42001

Tight Upholstered Back / Leather Wrapped Outside Back
Tight Seat with Loose Throw Pillow / Oak Seatrails & Legs
with Cigar Club Finish
Aluminum Feet with Heritage Bronze Finish
33¾ x 35 x 27½ in | 86 x 88.9 x 70 cm
Seat height: 15¾ in (40 cm) / Arm height: 16¾ in (41.27 cm)





CONVERGE LOW ACCENT TABLE
SLD50008
Square Pure Pearl Beveled Marble Top with rounded Edges
Stainless Steel Heritage Bronze Finished Molding
Strutted Oak Base in Caribbean Cask Finish
19¾ x 19¾ x 15¾ in | 50 x 50 x 40 cm



CONVERGE CONSOLE TABLE
SLD53004.C173
Hull Shaped Console Table
Tracery shaped Beech frame in Cigar Club Finish
Beveled Edge Bianco Carrara Marble Top
Legs Joined by stretchers
59 x 17¾ x 35½ in | 150 x 45 x 90 cm
Also available in Caribbean Cask finish:
SLD53004.C172



CONVERGE ACCENT TABLE II
SLD50022.C172
Beveled Edge Bianco Carrara Marble Top
The Tracery Base of Square hull shape
Caribbean Cask Finish
Joined by Heritage Bronze Finish Stretchers
15½ x 15½ x 22¼ in | 39.5 x 39.5 x 56.2 cm



ARENA MEDIA CABINET
SLD62007.C173
Oak Veneered with Cigar Club Finish
Elongated Floating Oval Bianco Carrara Top with Beveled Edge
Above Slatted Tambour Doors with a Bold Central Relief Inset Handle in Heritage Bronze Finish
Enclosing A Twin Section Interior with Adjustable Shelves & Wire Management
Molded Rails with Gently Splayed Legs
78¾ x 19¾ x 22 in | 200 x 50 x 56 cm
Also available in Caribbean Cask finish: SLD62007.C172

CONTOUR SIDE TABLE (OCTOPUS INK, LARGE)
SLD50004

Vintage Taupe Lacquer Base
Heritage Bronze Finish Molding Detail
Octopus Ink Molded Edge Marble Top
19¾ x 19¾ x 15¾ in | 50 x 50 x 40 cm



CONTOUR SIDE TABLE (PURE PEARL, SMALL II)
SLD50003

Rare Champagne Lacquer Base
Pure Pearl Moulded Edge Marble Top
13¾ x 13¾ x 23½ in | 35 x 35 x 60 cm



CONTOUR SIDE TABLE
SLD50016

Caddy Molded Cavetto Edge Bianco Carrara Top
Heritage Bronze Finish Molding Detail
Tapered Vintage Taupe Lacquered Base
19¾ x 19¾ x 16 in | 50 x 50 x 40.4 cm



CONTOUR SIDE TABLE (PURE PEARL, SMALL)
SLD50001

Vintage Taupe Lacquer Base
Pure Pearl Moulded Edge Marble Top
13¾ x 13¾ x 23½ in | 35 x 35 x 60 cm



MOMENTUM SOFA

SLD45025COM.C173

Dramatically Sloped Quilted Outside Back
Twin Cradled Tight Upholstered Seat and Back with Heritage Bronze Finish Welt Detail
Four Quilted Throw Pillows
Textured Beech Cigar Club Finish Base Rails
Splayed Tapering Legs in Heritage Bronze Finish

94½ x 39¼ x 31½ in | 240 x 100 x 80 cm
Seat height: 17 in (43.2 cm)

Also available in Caribbean Cask Finish: SLD45025COM.C172



ALLURE ATTRACTION COCKTAIL TABLE II

SLD51008

Caddy Molded Bianco Carrara White Marble Top
Heritage Bronze Finish Molding Detail
Channel Upholstered Sides

47¼ x 47¼ x 15¾ in | 120 x 120 x 40 cm



LOOP UPHOLSTERED ARM CHAIR

SLD42016

The Cylinder Roll Back and Arms above a Tight Seat
The Back and Arms on Tapering Loop Supports
Copious Finish

48 x 37½ x 26 in | 122 x 95.3 x 66 cm
Seat height: 17½ in (44.5 cm)



LOOP LOW UPHOLSTERED ARM CHAIR

SLD42015

Curved Cylinder Roll Back and Arms
Tight Hassock Seat
The Back and Arms on Tapering Loop Supports
Copious Finish

58¾ x 49¼ x 26½ in | 149 x 125.4 x 67.5 cm
Seat height: 17¼ in (44 cm)



ENFOLD SOFA

SLD45028

Low, Tight Upholstered Back & Arms / Tight Seat
Arched Mahogany Veneered Splayed End Supports / Duster Finish

70¾ x 23¼ x 23½ in | 180 x 59 x 60 cm
Seat height: 17½ in (44.5 cm)

EDGE SIDE TABLE

SLD50025R

Shaped Black Mirror Inset Cantilever Top
Everglade Moss Finish Leather Wrapped Cut-Out Cone Body
Side Cabinet Enclosing Shelved Interior
Leather Wrapped Base

26½ x 13¼ x 20½ in | 67.3 x 33.9 x 52.2 cm
Right and Left Facing Versions Available.



ANNULUS COCKTAIL TABLE

SLD51025

Bold Bianco Carrara Marble Top
Duster Finish Mahogany Veneered Lens Base
Fitted with two Drawers

47¼ x 47¼ x 15¾ in | 120 x 120 x 40 cm







BILLOWY CONSOLE TABLE

SLD53006

Beveled Edge Bianco Carrara Marble Top
Vertical Channel Paneled Frieze with Metal Framed Details
Two Frieze Drawers / Tapered Duster Finish Turned Mahogany Legs
63½ x 18¼ x 35½ in | 161 x 46 x 90 cm





LEAN ARMLESS THREE SEATER SOFA

SLD45017.0CCV

Broadly Channeled Seat & Back
Tight Upholstered Outside Back

94½ x 39¼ x 31½ in
240 x 100 x 80 cm
Seat height: 17 in (43 cm)



LEAN SOFA

SLD45018.0CCV

Broadly Channeled Seat & Back
Tight Upholstered Outside Back

94½ x 39¼ x 31½ in | 240 x 100 x 80 cm
Seat height: 17 in (43 cm)

LEAN ACCENT TABLE

SLD50023

Black Mirror Inset Circular Top
Sepia Finish Leather Wrapped Cut-Out Cone Body
Copious Finish Disc Base

21¾ x 18½ x 19 in | 55 x 47 x 48 cm





INHERIT LARGE ROUND MARBLE COCKTAIL TABLE
SLD51033

Circular Inset Bianco Carrara Marble Tops
Open Carved Duster Finish Mahogany Cylinder Base
Internal Cavetto Molded Supports
36½ x 36½ x 17 in | 92.6 x 92.6 x 43 cm
Tempered Bronzed Glass top version: SLD51026
36½x 36½x 16 in | 92.6 x 92.6 x 40.6 cm

INHERIT SMALL ROUND GLASS COCKTAIL TABLE
SLD51034

Circular Inset Bronze Glass Top
Open Carved Duster Finish Mahogany Cylinder Base
Internal Cavetto Molded Supports
25½ x 25½ x 12½ in | 65 x 65 x 31.8 cm
Marble top version: SLD51032
25½x 25½x 13½in | 65 x 65 x 34.4 cm



INHERIT ROUND MARBLE COCKTAIL TABLE
SLD51027

Circular Inset Bianco Carrara Marble Top
Open Carved Duster Finish Mahogany Cylinder Base
Internal Cavetto Molded Supports
43¼ x 43¼ x 16 in | 110 x 110 x 40.6 cm



INHERIT SIDE TABLE
SLD50034

Circular Inset Bianco Carrara Marble Top
Open Carved Duster Finish Mahogany Cylinder Base
Internal Cavetto Molded Supports
18½ x 18½ x 23¼ in
46.9 x 46.9 x 58.9 cm



INHERIT CONSOLE TABLE
SLD53008

Hull Shaped Inset Bianco Carrara Marble Top
Open Carved Duster Finish Mahogany Base
Internal Cavetto Molded Supports & Stretchers
72½ x 16½ x 28 in | 184.1 x 41.8 x 71.2 cm



INHERIT COCKTAIL TABLE
SLD51028

Hull Shaped Inset Bianco Carrara Marble Top
Open Duster Finish Base
Internal Cavetto Molded Supports
54½ x 28½ x 16¼in | 138.2 x 72.2 x 41.2 cm



GATHER



COVET DINING CHAIR II
SLD40007

Leather Wrapped Tailored Back
Upholstered Back and Seat
Solid Brushed Beech Legs in Cigar Club Finish
Heritage Bronze Finish Feet

21¼ x 24½ x 35½ in | 54 x 62.5 x 90 cm
Seat height: 18½ in (47 cm)



COVET DINING CHAIR
SLD40001

Leather Wrapped Tailored Back
Upholstered Back and Seat
Solid Oak Legs in Cigar Club Finish
Aluminum Feet with Heritage Bronze Finish

21¼ x 24½ x 35½ in | 54 x 62.5 x 90 cm
Seat height: 18½ in (47 cm)



PASSEPARTOUT DINING CHAIR
SLD40010

Narrow Arched Back Trailing to Tight Seat
Diamond Quilted Outside Back
Cigar Club Finish Tapered Legs
Heritage Bronze Finish Cappings

22¾ x 24 x 38½ in | 57.8 x 61 x 98 cm
Seat height: 19¼ in (48.9 cm)



ENFOLD DINING ARM CHAIR

SLD41013

27¼ x 28 x 37 in | 68.9 x 71.1 x 94 cm
Seat height: 18 in (45.7 cm)
Arm height: 25 in (63.5 cm)



ELEGANZA DINING SIDE CHAIR

SLD40011

Curved Arched Upholstered Back & Tight Seat
On Tubular Tapered Metal Legs in Copious Finish
20¾ x 26¼ x 33½ in | 52.5 x 66.6 x 84.8 cm
Seat height: 19 in (48.3 cm)



ENFOLD DINING CHAIR

SLD41012

Low Tub Back / Tight Boxed Seat
Chamfered Duster Finish Beech Rails / Tapering Legs
26 x 28¾ x 27¾ in | 66 x 72.9 x 70.3 cm
Seat height: 17¾ in (45 cm)



ELEGANZA DINING ARM CHAIR

SLD41011

Curved Arched Upholstered Back & Tight Seat
Tubular Metal Wrap Around Arms
Loop Supports & Legs
Copious Finish
23 x 27¼ x 33½ in | 58.2 x 69.3 x 85 cm
Seat height: 19 in (48.3 cm)
Arm height: 25½ in (64.8 cm)

REINVIGORATE





AMOUR UK SUPER KING BED
SLD87001

Gently Curved Headboard
Diamond Quilted Central Headboard Panel
Leather Wrapped Rails
Solid Oak Support Frame in Cigar Club Finish
Aluminum played & Tapered Legs with Heritage Bronze Finish
Slatted Interior Mattress Support
77¼ x 87¼ x 52¼ in | 196 x 222.9 x 132.4 cm



SHELTER UK SUPER KING

SLD87007

Gently Angled Curved Headboard
Diamond Quilted Headboard Panel
Upholstered Rails With Foot in Cigar Club Finish
Slatted Interior Mattress Support
93½ x 85¾ x 55 in | 237.6 x 217.8 x 140 cm



ADMIRE CHEST OF DRAWERS

SLD60002

Quartered & Crown Oak Veneered with Cigar Club Finish
Floating Top above Three Deep Drawers
The Lower Two Drawers with an Overlapping Relief Roundel Handle
On Solid Brushed Beech Rails with Heritage Bronze Finish Legs
54 x 19¾ x 35 in | 137.2 x 50 x 88.7 cm





AMOUR NIGHTSTAND II
SLD50014

Solid Oak & Oak Veneered with Cigar Club Finish
Caddy Molded Rounded Edge Rectangular Top
Frieze Drawer with Open Section Below
Reptile Embossed Leather Wrapped Sheath within Gilt Molding
27½ x 17¼ x 22 in | 70 x 43.5 x 55.8 cm



OBLIQUE NIGHTSTAND
SLD50031L

Mahogany Veneered with Duster Finish
Bianco Carrara Marble Shaped & Beveled Top
Conical Body with Two Drawers & Open Section
Recessed Plinth Base with Copious Finish
29½ x 14¾ x 19 in | 75 x 37.5 x 48.1 cm



OBLIQUE NIGHTSTAND
SLD50031R

Mahogany Veneered with Duster Finish
Bianco Carrara Marble Shaped & Beveled Top
Conical Body with Two Drawers & Open Section
Recessed Plinth Base with Copious Finish
29½ x 14¾ x 19 in | 75 x 37.5 x 48.1 cm





HAVEN UK SUPER KING BED
SLD87012
Ovoid Cylinder Upholstered Roll Headboard
End Frame Elongated Metal Loop Supports in Copious Finish
Padded Upholstered Rails above a Duster Finish Beech Frame
Splayed Legs
92¼ x 91¼ x 40 in | 234.2 x 231.6 x 101.6 cm



LOOP END OF BED BENCH
SLD44006
Upholstered Seat / Copious Finish
Elongated Oval Metal & Upholstered Loop Ends & Rails
61 x 17¾ x 19½ in | 154.7 x 45.3 x 49.5 cm



URBANE LOOP MIRROR
SLD31003
A single unit composed of 13 repeating Metal Frame motifs
Copious Finish Frames
Mirror Glass
65 x 0¾ x 43¼ in | 164.9 x 2.2 x 110 cm





PRESENCE EXECUTIVE CHAIR
SLD42005

Tight Winged Upholstered Back
Tight Upholstered Seat
Leather Wrapped Outside Back
Raised on a Height Adjustable Column Base
Wire Brushed Oak with Cigar Club Finish
29½ x 29½ x 50¼ in | 75 x 75 x 127.63 cm
Seat height: 19½ in (49.53 cm)



ACQUAINT VISITOR CHAIR
SLD40002

Leather Wrapped Tailored Back
Upholstered Inside Back & Seat
Solid Oak legs in Cigar Club Finish
Aluminum Feet with Heritage Bronze Finish
22 x 24 x 32¾ in | 55.88 x 61 x 83 cm
Seat height: 19 in (48.26 cm)



LEGACY WRITING DESK
SLD71005

Oak & Crown Oak Veneered with Cigar Club Finish
Grey Leather Inset Top above Three Frieze Drawers
Heritage Bronze Finish Relief Cast Handles
Solid Brushed Beech Legs with Heritage Bronze Finish Javelin Feet
59 x 27½ x 30 in | 150 x 69.7 x 76.2 cm



VERTEX DRESSING / WRITING TABLE
SLD72007
Mahogany Veneered
Rectangular Hull Top with LED lit Loop Framed Mirror
One Side of the Desk with a Hinged Top Revealing a Fitted Interior
On Splayed Tapered Supports
53¼ x 19¾ x 27½ in | 135 x 50 x 70 cm



ENFOLD DRESSING CHAIR
SLD42017
Low Tub Back
Tight Boxed Seat
Duster Finish Beech Rails & Bold Tapering Legs

Seat height: 17¾ in (45 cm)
25¼ x 22 x 25¾ in | 65.7 x 55.6 x 65.2 cm





VERTEX WRITING TABLE
SLD71007

Duster Finish Mahogany Veneered Shaped Top with Leather Inlaid Tray Overlay Centre
Concealed Charging Port to Top Drawer / One Conical Pedestal with a Circular Blackened Mirror Top
Everglade Moss Finish Leather Wrapped with Two Pedestal Drawers
The Other Tapered Support in Mahogany Veneer
98½ x 37¼ x 32 in | 250.3 x 94.4 x 81 cm



PREVAIL EXECUTIVE DESK ARM CHAIR
SLD41014
Arched Upholstered Back & Tight Seat
Padded Upholstered Arms
Outside Back with Diamond Quilting
Adjustable Matt Black Steel Base with Castors
28¾ x 28¾ x 43½ in | 73 x 73 x 110.3 cm
Seat height: 17¼ in (44 cm)
Arm height: 23¼ in (59 cm)



PREVAIL EXECUTIVE DESK CHAIR
SLD40015
Arched Upholstered Back & Tight Seat
Outside Back with Diamond Quilting
Adjustable Matt Black Steel Base with Castors
22¾ x 24½ x 37¼ in | 57.8 x 62.5 x 94.9 cm
Seat height: 17¼ in (44 cm)

URBANE TABLE LAMP

SLD20003

Hand Cast Metal Loop Centered Stem Base
Disc Base with Copious Finish
Fabric Cylinder Shade
13¾ x 13¾ x 25½ in | 35 x 35 x 65 cm



URBANE FLOOR LAMP

SLD21002

Hand carved Beech Loop Centered Stem Base in Duster Finish
Flared Capital & Metal Disc Base in Copious Finish
Fabric Cylinder Shade
27¼ x 27¼ x 62¼ in | 69 x 69 x 158 cm



LOOP PILLOW II

P55x55.0CDJ

21¾ x 21¾ x 7¾ in | 55 x 55 x 20 cm



LOOP PILLOW

P55x55.0CDI

21¾ x 21¾ x 7¾ in | 55 x 55 x 20 cm



ENFOLD PILLOW

P55x55.0CDL

21¾ x 21¾ x 7¾ in | 55 x 55 x 20 cm



ENFOLD PILLOW II

P55X55.0CDK

21¾ x 21¾ x 7¾ in | 55 x 55 x 20 cm



ENFOLD PILLOW III

P55X55.0CDH

21¾ x 21¾ x 7¾ in | 55 x 55 x 20 cm

MATERIALS: FINISHES, FABRICS & SPECIAL DETAILS



Clotted Cream
UP4834
Fabric Grade F 6



Poetic
UP4946A
Fabric Grade F 2



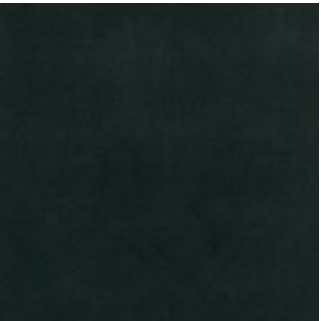
Signature Stripes
UP4831
Fabric Grade F 5



Royal Flourish
UP4832
Fabric Grade F 6



Shades Of Grey
UP4833
Fabric Grade F 5



Velvet Emerald
UP4945A
Fabric Grade 3



Burnt Charcoal
UP4837
Fabric Grade F 5



Ivory
LE0247
Leather Grade L 3



Camel Tan
LE0403
Leather Grade 3



Petrifaction
LE0402
Leather Grade L 1

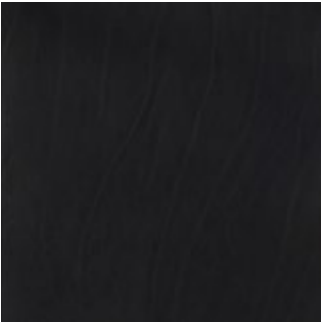


Precious
LE0325A
Leather Grade 4



Noir
LE0329
Leather Grade L 3

MATERIALS: FINISHES, FABRICS & SPECIAL DETAILS



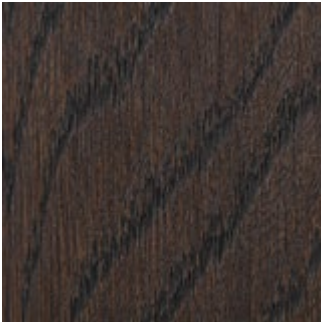
Midnight
LE0324
Leather Grade L 5

MATERIALS: FINISHES, FABRICS & SPECIAL DETAILS

WOOD FINISHES



CARIBBEAN CASK



CIGAR CLUB

LACQUER

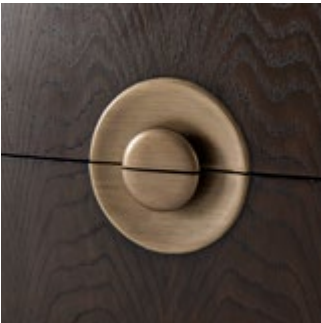


RARE CHAMPAGNE



VINTAGE TAUPE

SPECIAL DETAILS



HERITAGE BRONZE



SPIRAL DIAMOND
STITCHED LEATHER

MATERIALS: FINISHES, FABRICS & SPECIAL DETAILS



Hoarfrost
UP5555
Fabric Grade 2



Mahogany
UP5369
Fabric Grade 1



Sandbank
LE0396.F
Leather Grade 3



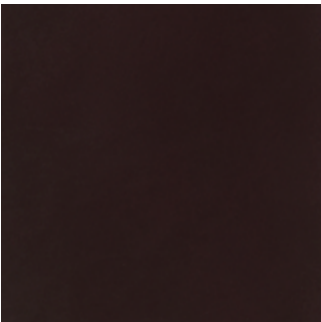
Petrifaction
LE0402
Leather Grade L 1



Everglade Moss
LE0423
Leather Grade 3



Tranquil
LE0422
Leather Grade 3



Dine
LE0421
Leather Grade 3

MATERIALS: FINISHES, FABRICS & SPECIAL DETAILS



GENERAL

Items included in this Catalog may not be represented in the Theodore Alexander showroom. Each of the unique items featured in this Catalog are the subject of copyright protection in the United States and throughout the world. Some items in this Catalog may not be available in certain Region or Country.

APPEARANCE

All Theodore Alexander products are manufactured to the highest standards and with the utmost care and attention to detail. Whilst we make every effort to accurately reproduce the colours of the furniture illustrated, differences in texture, grain and colour are inherent in all natural woodwork and should be expected as the individual characteristics of materials used. Variations in these qualities are not manufacturing defects and will not be accepted as such for the purpose of claims. Some changes in colour or texture may occur during the life cycle of the product, particularly in leather, wood and veneer. All exposed surfaces of Theodore Alexander furniture are prepared, sanded and finished, even though at times they are not visible. This includes the undersides, the back and the inside of the drawer boxes amongst others. While our fabrics and leather are sourced from the finest upholstery manufacturers, we are unable to provide a guarantee on fabrics or leather, including COM. Theodore Alexander can take no responsibility for wearability of fabric and leather or alternations to the fabrics and leather after it has shipped. We recommend the use of a professional upholstery dry cleaner in case of soiling or wear. Items are photographed in studio conditions and the appearance of the actual items may vary from that shown

DIMENSION, SPECIFICATIONS AND STYLE

All dimensions listed are approximate given the hand crafted nature of our product and the variation in fabrics used. There may be a difference of up to 2” from listed dimensions. When giving overall dimensions we may use some rounding. Product specifications are not binding and we reserve the right to make changes without notice. Please refer to your shipment for final sizes and specifications. Where descriptions refer to particular historical styles, this does not indicate the product stems from this period in any aspect other than in design inspiration.

INTELLECTUAL PROPERTY

We are proud of the unique designs created by our skilled designers and craftsmen. To protect your investments, infringements of any proprietary (trademarked, patented, copy righted or otherwise protected) design or right will be pursued to the full extent of the law. We will take legal action against any person and / or company that knowingly or unknowingly infringes upon our intellectual property rights. Trademarks, collection names, design and design elements in the Catalog may be the subject of pending and issued copyrights, trademark registrations and patents. All images and text contained in this Catalog are the sole property of Theodore Alexander or its subsidiaries and may not be use or reproduced in any medium without the expressed written consent of Theodore Alexander.

PRODUCT CARE

To learn more about caring for your furniture, visit our care page on theodorealexander.com



THEODORE ALEXANDER

theodorealexander.com