

# CONTEMPORARY BRIDGE FAUCET INSTALLATION INSTRUCTIONS

**Model #s:**

7600-12, 7600-18, 7800, 7825



## BEFORE YOU BEGIN YOUR INSTALLATION:

1



Turn off water supply.

2



Observe all local plumbing codes.

3



Inspect plumbing for signs of damage. Replace as necessary.

4



**DO NOT** use petroleum based products on this faucet.

### REQUIRED TOOLS:



Adjustable Wrench



Basin Wrench

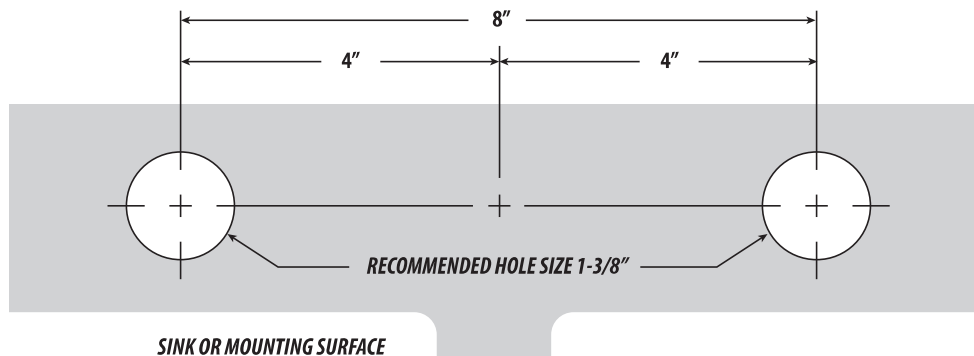


Phillips Screwdriver

## FAUCET HOLE PLACEMENT

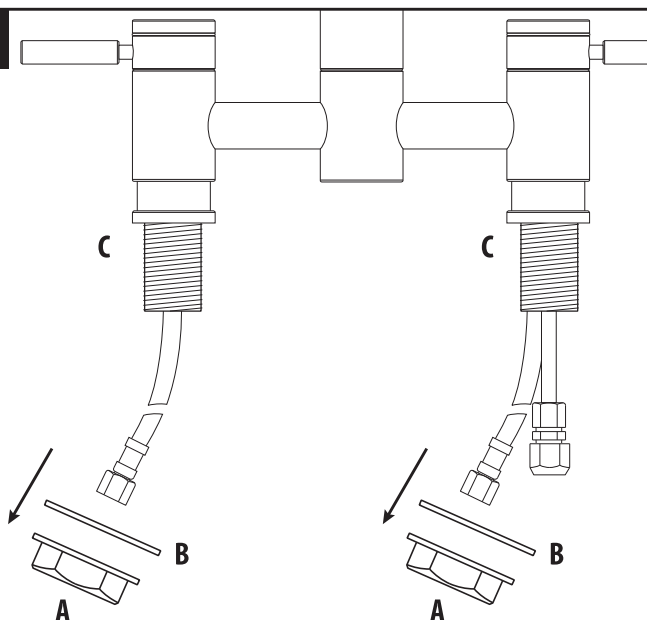
1.

Recommended deck hole 1-3/8". Drill holes for bridge faucet in mounting surface 8" on center. **OPTIONAL SIDE SPRAY:** We recommend installing the side spray hole a minimum of 4-3/4" away from nearest mounting hole of faucet.



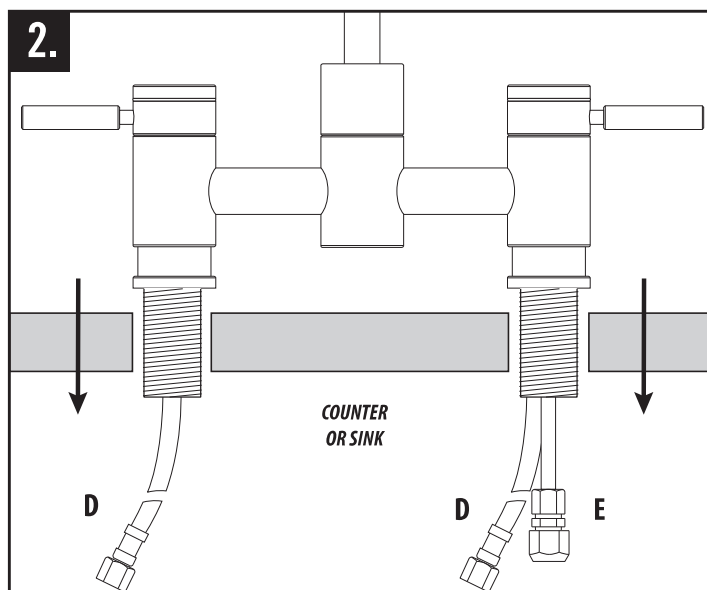
## FAUCET INSTALLATION

1.



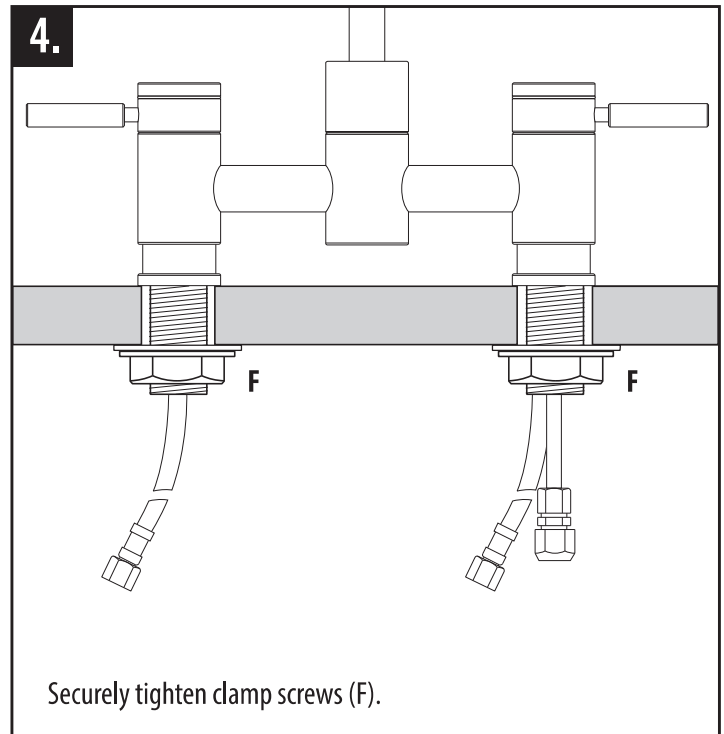
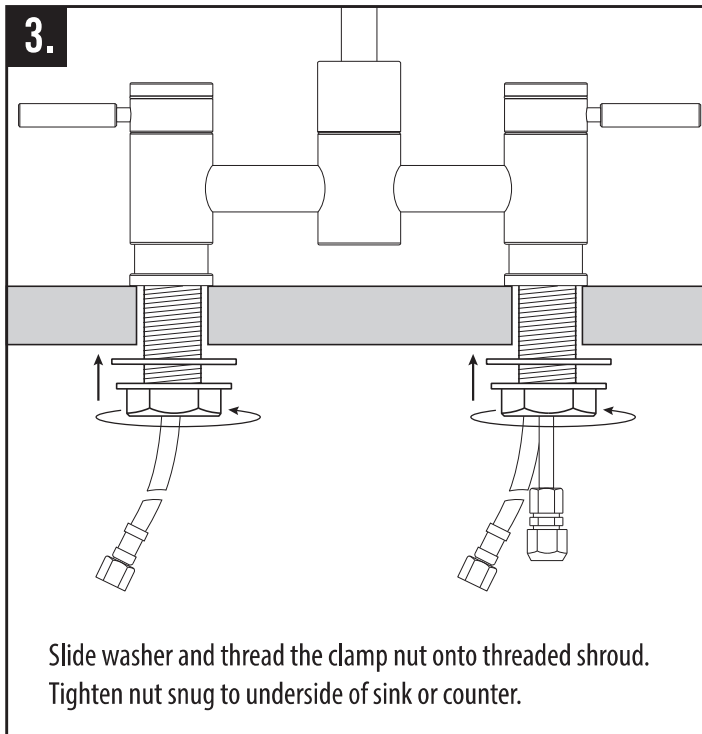
Remove clamp nuts (A) and washers (B) from threaded shrouds (C).

2.



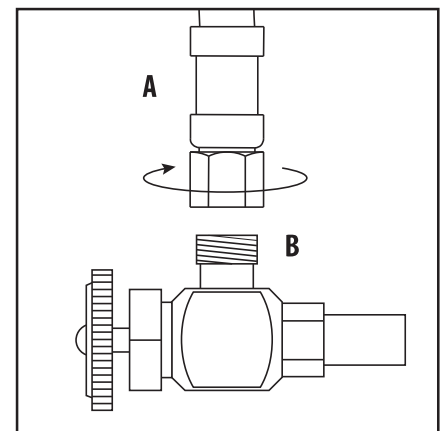
Fit flexible hoses (D) and rigid sidespray tube (E) through holes on counter or sink. (No plumbers putty is required. O-rings seals base).

## FAUCET INSTALLATION

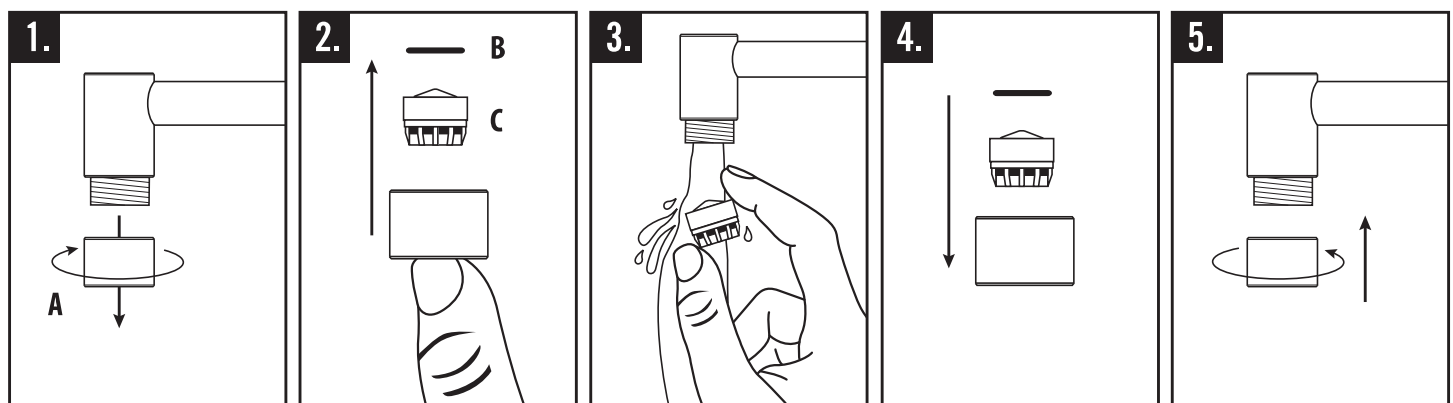


## CONNECTING SUPPLY HOSES

Before connecting supply hoses, flush supply stops to clear any debris. Place a bucket underneath stops and run water for 5 to 10 seconds. Turn water off. Carefully position hot and cold supplies so they will not interfere with other hoses. Connect supply hoses (A) to supply stops (B). **DO NOT** use teflon tape or plumbers putty. Turn water back on and check for leaks.



## CLEANING AERATOR AND DEBRIS SCREEN



Depending on quality of your household water, the aerator and debris screen may become clogged. We recommend cleaning one week after installation, then a minimum of once of year thereafter. To remove the debris, follow the steps below.

1. Gently unscrew and remove spout tip (A) by hand.
2. Remove O-ring (B). To remove aerator (C), push with finger from bottom.
3. Thoroughly rinse aerator with water until all debris is removed.
4. Place aerator, then O-ring back into spout tip.
5. Gently screw spout tip, by hand, snugly back onto spout.

## CONNECTING SIDE SPRAY (OPTIONAL)

**1.**

**COUNTER OR SINK**

Insert side spray base (A) into hole on your sink or counter. No plumbers putty is required. O-ring seals base. Slide spacer (B), then thread attaching nut (C) and securely tighten.

**2.**

Slide sidespray hose (D) through side spray base.

**3.**

Remove hose cap (E) from end of sidespray hose tube (F) on faucet (G).

**4.**

Connect and tighten end of sidespray hose to sidespray hose tube. Check for leaks.

## INSTALL AIR SWITCH (OPTIONAL)

**1.**

Before inserting air switch into hole, loosen switch base (A) until threads are exposed.

**2.**

Slide clear tubing (B) into tube fitting (C) at bottom of air switch shroud.

**3.**

**1-1/2" HOLE**

**COUNTER OR SINK**

Fit air switch and tubing through 1-1/2" hole on counter or sink. (No plumbers putty is required. O-ring seals base).

**4.**

Slide washer up then screw the clamp nut onto threaded shroud. Hand tighten nut to underside of sink or counter until snug.

**5.**

Tighten clamp screws (E) securely with screwdriver.

**6.**

Hand tighten switch base back down to cover threads.

**7.**

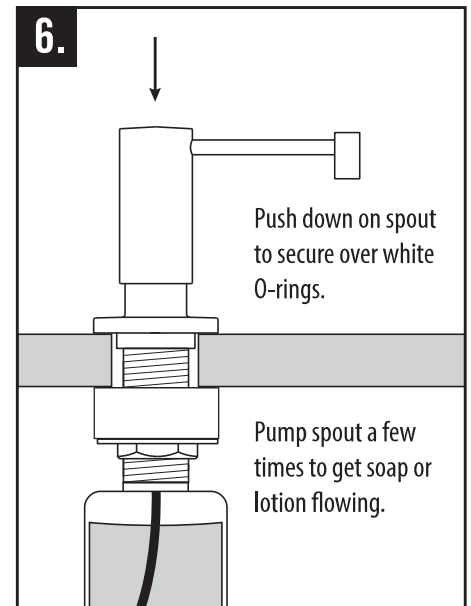
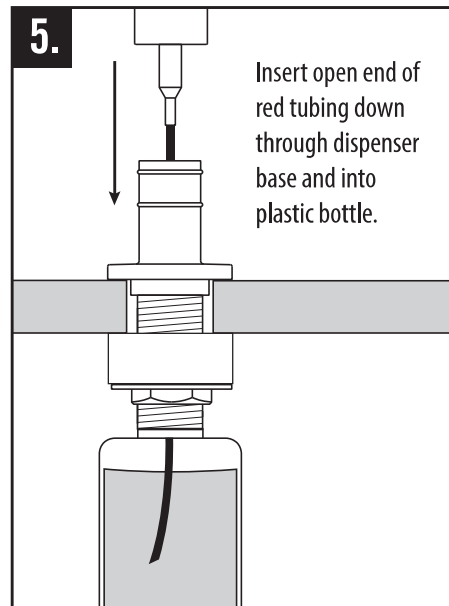
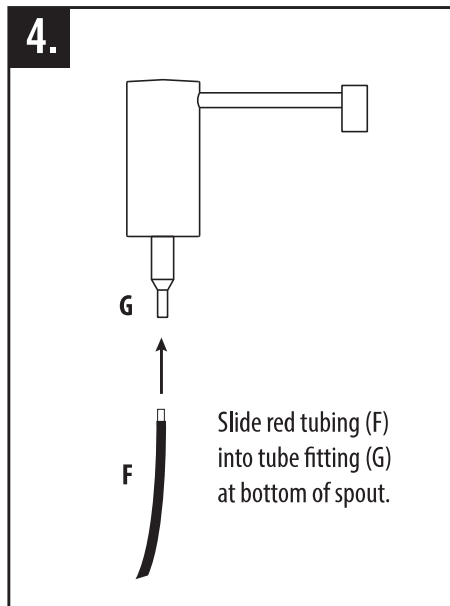
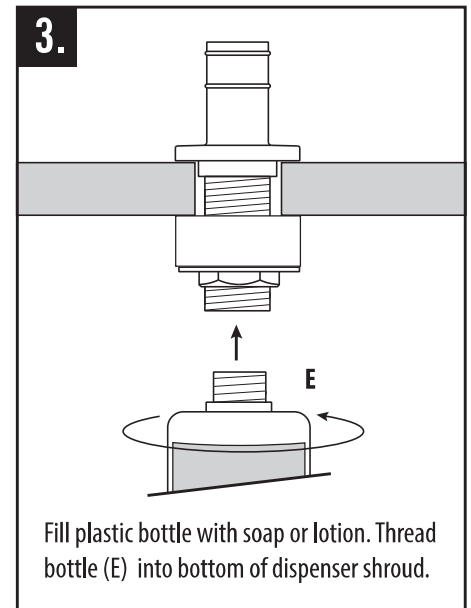
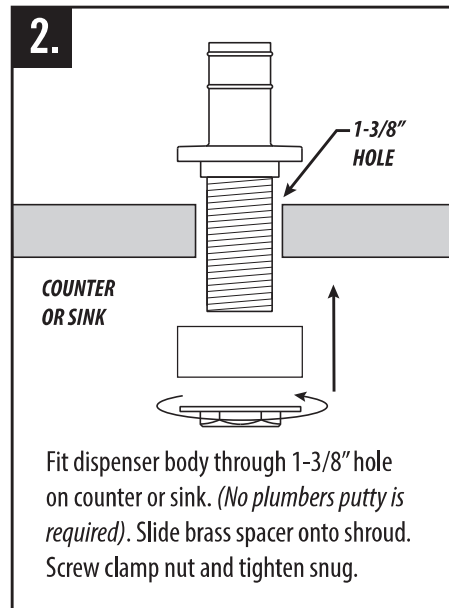
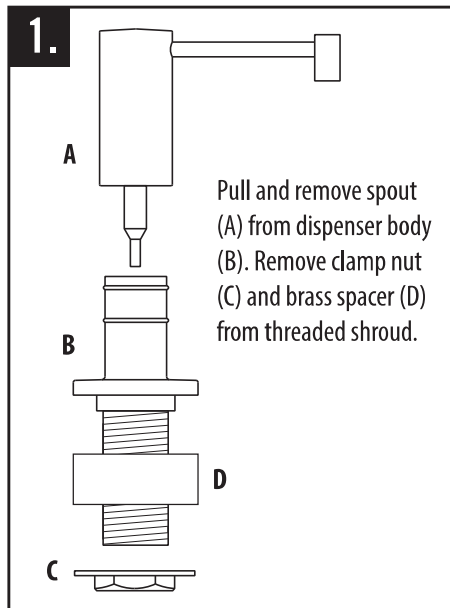
Slide other end of tubing (F) into tube fitting at bottom of control box (G).

**8.**

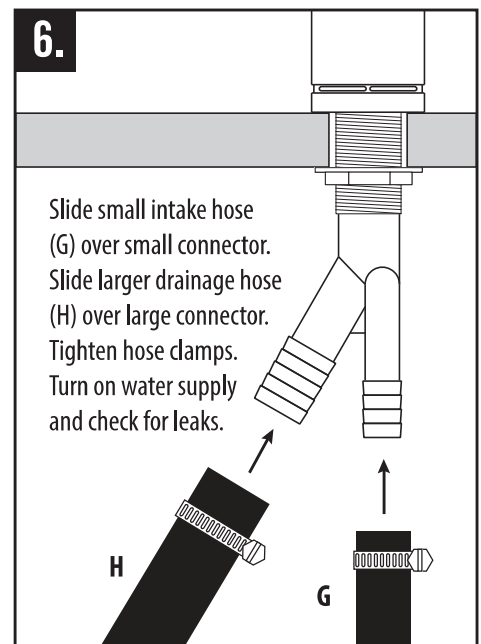
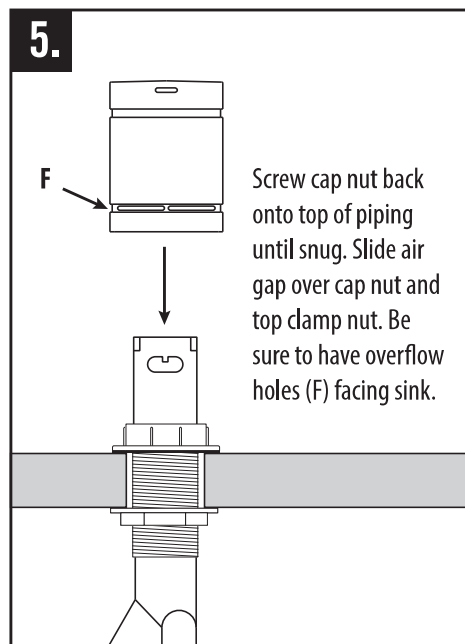
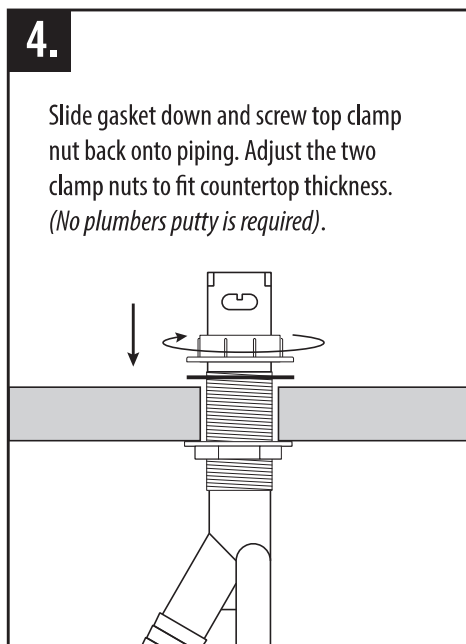
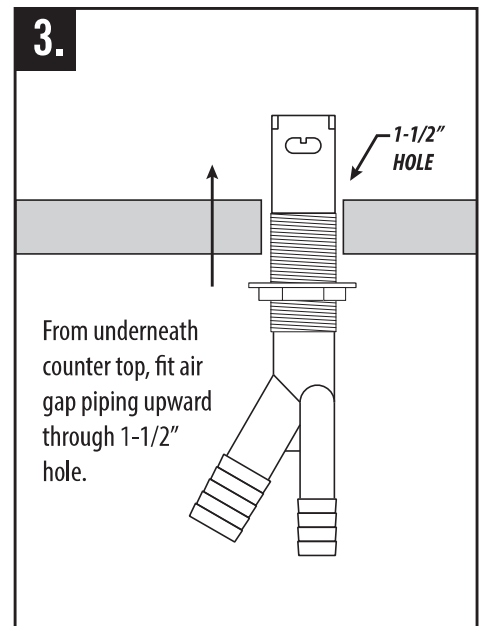
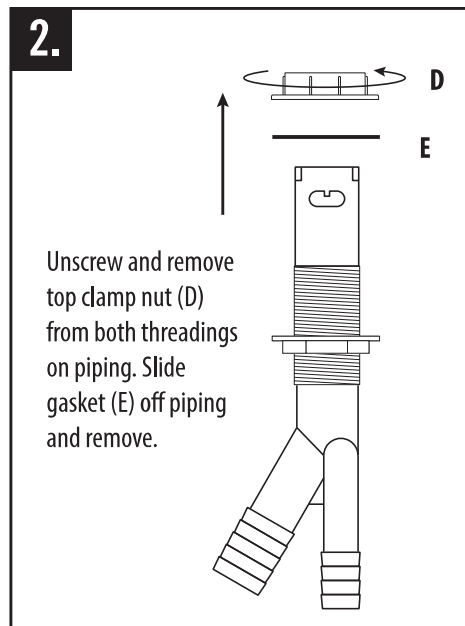
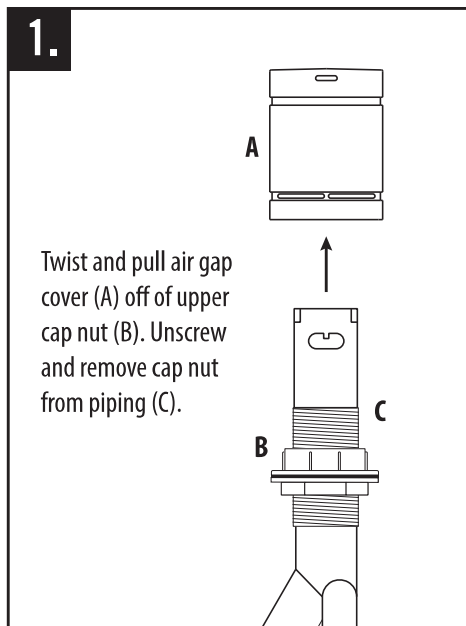
**GARBAGE DISPOSAL**

Plug control box into undersink electrical outlet. Plug garbage disposal into either dual outlet.

## INSTALL SOAP/LOTION DISPENSER (OPTIONAL)



## INSTALL SINGLE PORT AIR GAP (OPTIONAL)



1-888-304-0660 • 951-304-0520  
www.waterstoneco.com

MADE IN THE USA  
SINCE 1999

VEN-038-CBRG Rev. C