



SIMPLE MANUAL

# LG Wi-Fi Sound Bar

Please read this manual carefully before operating your set and retain it for future reference.  
To view the instructions of advanced features, visit <http://www.lg.com> and then download Owner's Manual. Some of the content in this manual may differ from your unit.

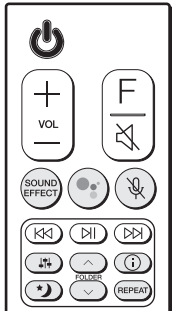
MODEL  
SL8YG



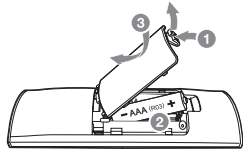
www.lg.com  
Copyright © 2019 LG Electronics Inc. All Rights Reserved.

ENGLISH

## Remote control



### Replacement of Battery



- SOUND EFFECT:** Selects a sound effect mode.
- **TV remote:** Long press **SOUND EFFECT** and press it again to use TV remote control.
  - : Standby and Stops feedback of Google Assistant.
  - : Enables and disables Voice recognition.
  - : Adjusts sound level of each speaker.
  - **Surround sound:** Long press and press it again.
- FOLDER** ^/∨ : Searches a folder.
- ⓘ : Displays the information of a file, an input source, a connected **Bluetooth** device name or an application name.
- **Auto Power ON/OFF:** Long press ⓘ and press it again.
  - : Turns on or off the Night time mode.
- REPEAT:** Listens to your files repeatedly or randomly.

## Additional Information

Specification	
Power consumption	Refer to the main label.
AC adapter	<ul style="list-style-type: none"><li>• Model: DA-50F25</li><li>• Manufacturer : Asian Power Devices Inc.</li><li>• Input: 100 - 240 V ~ 50 - 60 Hz</li><li>• Output: 25 V  2 A</li></ul>
Dimensions (W x H x D)	Approx. 1060.0 mm x 57.0 mm x 119.0 mm (41.7 inch x 2.2 inch x 4.7 inch)
Bus Power Supply (USB)	5 V  500 mA
Amplifier (Total RMS Output power)	440 W RMS

Design and specifications are subject to change without notice.



### Rear Speakers Ready

Ready for surround sound with Rear Speakers Kit sold separately. (SPK8-S)

### FCC Compliance Statement

This equipment has been tested and found to comply with the limits for a Class B digital device, pursuant to Part 15 of the FCC Rules. These limits are designed to provide reasonable protection against harmful interference in a residential installation. This equipment generates, uses, and can radiate radio frequency energy and, if not installed and used in accordance with the instructions, may cause harmful interference to radio communications. However, there is no guarantee that interference will not occur in a particular installation. If this equipment does cause harmful interference to radio or television reception, which can be determined by turning the equipment off and on, the user is encouraged to try to correct the interference by one or more of the following measures:

- Reorient or relocate the receiving antenna.
- Increase the separation between the equipment and the receiver.
- Connect the equipment to an outlet on a circuit different from that to which the receiver is connected.
- Consult the dealer or an experienced radio/TV technician for help.

This device complies with part 15 of the FCC Rules. Operation is subject to the following two conditions: (1) this device may not cause harmful interference and (2) this device must accept any interference received, including interference that may cause undesired operation. Any changes or modifications in construction of this device which are not expressly approved by the party responsible for compliance could void the user's authority to operate the equipment.

**FCC RF Radiation Exposure Statement:** This equipment complies with FCC radiation exposure limits set forth for an uncontrolled environment. This transmitter must not be co-located or operating in conjunction with any other antenna or transmitter.

This equipment should be installed and operated with minimum distance 20 cm (7.8 inches) between the antenna and your body. Users must follow the specific operating instructions for satisfying RF exposure compliance.

### FCC Radio Frequency Interference Requirements:

High power radars are allocated as primary users of the 5.25 to 5.35 GHz and 5.65 to 5.85 GHz bands. These radar stations can cause interference with and/or damage this device. This device cannot be co-located with any other transmitter.

### Supplier's Declaration of Conformity

Trade Name	LG
Responsible Party	LG Electronics USA, Inc.
Address	1000 Sylvan Ave Englewood Cliffs, NJ 07632
Telephone	(201)266-2215

## OPEN SOURCE SOFTWARE NOTICE INFORMATION

To obtain the source code under GPL, LGPL, MPL, and other open source licenses, that is contained in this product, please visit <http://opensource.lge.com>. In addition to the source code, all referred license terms, warranty disclaimers and copyright notices are available for download.

LG Electronics will also provide open source code to you on CD-ROM for a charge covering the cost of performing such distribution (such as the cost of media, shipping, and handling) upon email request to [opensource@lge.com](mailto:opensource@lge.com).

This offer is valid for a period of three years after our last shipment of this product. This offer is valid to anyone in receipt of this information.

For more information about Google's open source, visit device settings of Google Home app.

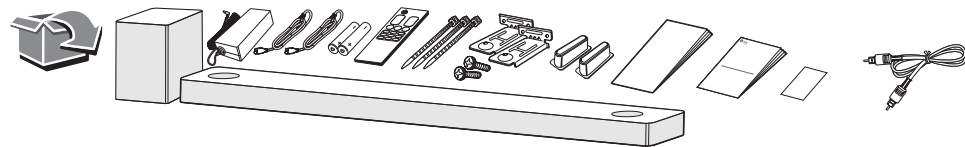
### Disclaimers

- Google, Google Home, Google Play, Chromecast built-in and other related marks and logos are trademarks of Google LLC.
- Google Assistant requires an internet/data connection. Data rates may apply.
- The Google Assistant is not available in certain languages and countries.
- Subscriptions may be required, and additional terms, conditions and/or charges may apply.
- Controlling certain devices and features in your home requires a compatible smart device.

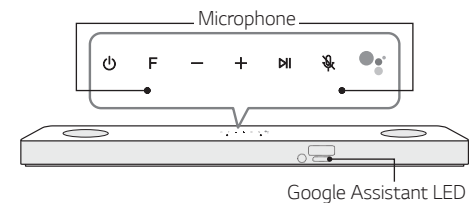


LG Customer Information Center	
1-800-243-0000 1-888-865-3026	USA, Consumer USA, Commercial
Register your product Online!	
<a href="http://www.lg.com">www.lg.com</a>	

Printed in China

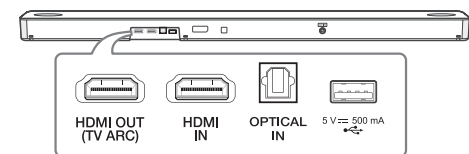


## Front Panel



- ⏻ (Standby) ..... Switches the unit ON or OFF.
- F (Function) ..... Selects function.
- ⏮/⏭ (Volume) ..... Adjusts volume.
- ⏮/⏭ (Play / pause)
- 🔇 (Mic mute) ..... Enables and disables Voice recognition.
- 🔊 ..... Standby and Stops feedback of Google Assistant.

## Rear Panel



- HDMI OUT (TV ARC) ..... Connect to a TV.
- HDMI IN ..... Connect to device with HDMI OUT.
- OPTICAL IN ..... Connect to an optical device.
- 5 V 500 mA (USB) ..... Connect to a USB device.
- DC IN ..... Connect to the AC adapter.

## Subwoofer Connection

Place the wireless subwoofer near the sound bar and follow steps below.

- 1 Connect the power cord of the sound bar and the wireless subwoofer to the outlet.
- 2 Turn on the sound bar.
  - The sound bar and wireless subwoofer will be **automatically** connected. The subwoofer's green LED turns on.

## Manually Subwoofer Connection

If the subwoofer does not make sound, try to connect manually.

- 1 Press **Pairing** on the rear of the wireless subwoofer.
  - The green LED on the rear of the wireless subwoofer blinks quickly. (If the green LED does not blink, press and hold the **Pairing**.)
- 2 Turn on the sound bar.
  - Pairing is completed. The green LED on the rear of the wireless subwoofer turns on.

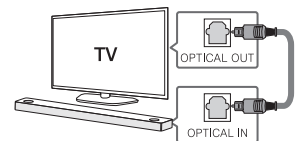
! Keep the sound bar and the subwoofer away from the device (ex. wireless router, microwave oven, etc.) over 1 m (3.3 ft) to prevent wireless interference.

## TV Connection

Connect the sound bar and TV using Optical (A) or HDMI ARC (B).

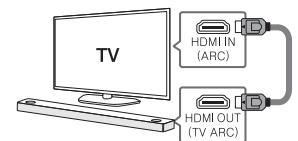
### A Optical Connection

- 1 Connect the sound bar to the TV using Optical cable.
- 2 Set up [External Speaker (Optical)] on your TV setting menu.



### B HDMI (ARC) Connection

- 1 Connect the sound bar to the TV using HDMI cable.
- 2 Set up [External Speaker (HDMI ARC)] on your TV setting menu.

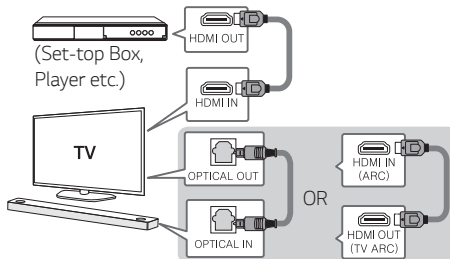


! HDMI connection is unavailable if your TV does not support HDMI ARC.

- If this unit is connected by OPTICAL and ARC at the same time, the ARC signal is a high priority.

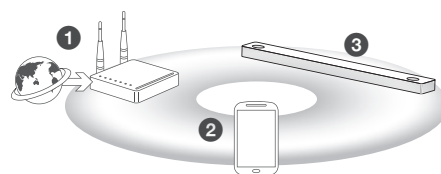
## Additional Device Connection

- 1 Connect to the external device like as follow.



- 2 Set the input source by pressing **F** repeatedly.

## Network Connection



- 1 Check network condition. A router connected to network should be installed.
- 2 Connect your smart device to your home network.
- 3 Connect the sound bar to the power supply.

! All devices should be connected to same router.

## Step.1 Install "Google Home" App

Download the Google Home App from the Google Play or App Store.

## Step.2 Set up the Wi-Fi connection with app

- 1 Connect your smart device to the Wi-Fi network that you'll use for your speaker.

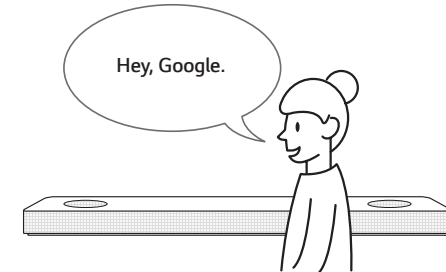
! In case of iOS devices, it should be turned on **Bluetooth** setting on your smart device.

- 2 Launch the "Google Home" app.
- 3 Follow the steps for Wi-Fi connection on the app.
  - When the speaker is properly connected to Wi-Fi, "CONNECTED" will be appears on the display window with sound.

## How to Use "Google Assistant"

Make sure the speaker is connected to Wi-Fi.

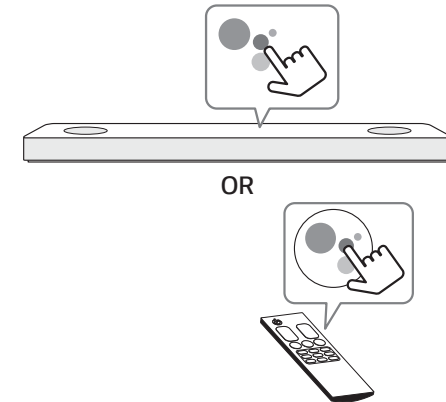
### Case 1. Say "Hey, Google"



! The Google Assistant only responds to voice commands when you are using Wi-Fi or BT (**Bluetooth**) as the input.

If you are using HDMI, Optical, ARC, Optical Sound Sync, or USB input, then you must use the 🔊 button to activate the Google Assistant.

### Case 2. Press 🔊



## Voice command

- **Plan your day**
  - "Tell me about my day."
  - "What's my next meeting?"
  - "Set a reminder to check schedule at 6pm."
- **Weather**
  - "What's the weather?"
  - "What's the weather on tomorrow?"
  - "What's the weather in New York?"
- **Music**
  - "Play the music." "Next song."
  - "Previous song." "Pause the music"
- **Availability**
  - "How many calories in a hot dog?"
  - "How do I get to Ocean Beach?"
  - "How do you say hello in Korean?"
  - "Talk to Best Jokes."
- **Internet**
  - "What movies are showing this weekend?"
  - "Why is the sky blue?"
  - "What is the smallest country in Europe?"
  - "How much sugar is there in a Coke?"
- **Subscriptions**
  - "What are the latest headlines?"
  - "Play Time's The Brief?"
- **Smart Home**
  - "Turn up the thermostat."
  - "Set the thermostat to 72 degrees"
  - "Dim the lights in the kitchen."
  - "Is the light on in the living room?"
- For more information on the voice commands, refer to the "Google Home" app screen or visit the web site. <https://support.google.com/assistant>
- If you're having problems with Voice recognition or this product, suggest your feedback by saying "Hey, Google, feedback". It is helpful to Google Service quality enhancement.

## Bluetooth Connection

### Step 1. Connect the Wi-Fi

Make sure the speaker connects to Wi-Fi by using "Google Home" app.

! **Bluetooth** function is inactive before connecting to Wi-Fi.

### Step 2. Change Function

Select the **Bluetooth** function by pressing **F** repeatedly.

### Step 3. Find and Select your speaker name

Select speaker name that was set on "Google Home" app on the device list of your smart device. When successfully connected **Bluetooth**, "PAIRED" will appear on display window.

## Additional

### Comfortable Function

With the Google Assistant built in, you can control compatible smart home devices such as TVs, lights, switches, plugs, thermostats and more by simply using your voice.

! For more information, visit the below web site.

- **Set up, Usage and more:** <https://support.google.com/assistant>
- **Compatible LG appliance models:** Visit <http://www.lg.com> and then search the information.

## Download LG Wi-Fi Speaker Application

You can manage the speaker settings and control the speaker by using "LG Wi-Fi Speaker". Download "LG Wi-Fi Speaker" on the App Store or Google Play Store.