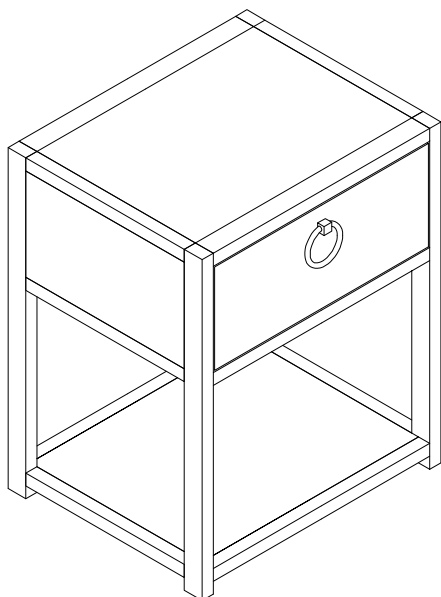


ASSEMBLY INSTRUCTIONS

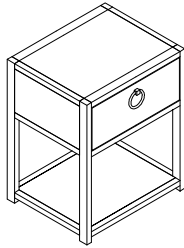

ITEM#: 2030-AT2126

DESCRIPTION: 1 SHELF ACCENT TABLE

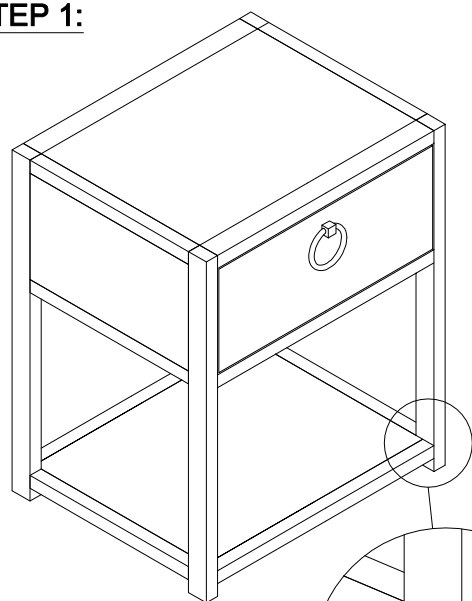
Thank you for purchasing this quality product. Be sure to check all packing material carefully for small parts which may have come loose inside the carton during shipment. Identify and count all parts and compare with the parts list below:



PARTS LIST

NO.	SKETCH	PARTS	Q'TY
1		ACCENT TABLE	1PC
2			
ASSEMBLY HARDWARE PACK			
NO.	SKETCH	HARWARE	Q'TY
A		ADJUSTABLE LEVELER	4PCS

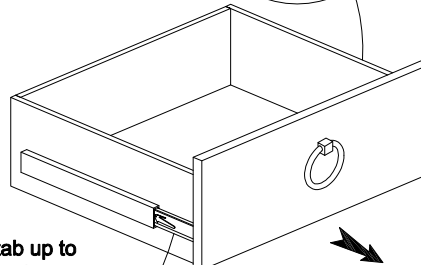
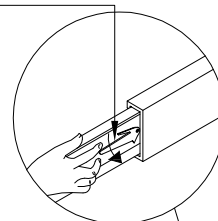
STEP 1:



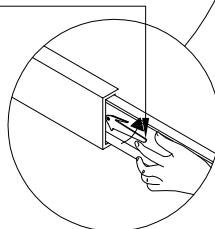
4x

Adjustable leveler

Push tab down to
remove drawer



Push tab up to
remove drawer



To remove drawer, simultaneously pull
tab up one side and push down on the
other and remove drawer.