



WAM750/WAM751

Wireless Audio - Multiroom

M7

User Manual

imagine the possibilities

Thank you for purchasing this Samsung product.
To receive more complete service,
please register your product at
www.samsung.com/register

Safety Information

Regulatory Compliance Statements

	<div>CAUTION</div> <div>RISK OF ELECTRIC SHOCK DO NOT OPEN</div>	
The lightning flash and arrowhead within the triangle is a warning sign alerting you to dangerous voltage inside the product.	CAUTION: TO REDUCE THE RISK OF ELECTRIC SHOCK, DO NOT REMOVE THE COVER (OR BACK). NO USER SERVICEABLE PARTS INSIDE. REFER SERVICING TO QUALIFIED SERVICE PERSONNEL.	The exclamation point within the triangle is a warning sign alerting you to important instructions accompanying the product.

Warning

- To reduce the risk of fire or electric shock, do not expose this appliance to rain or moisture.
- Do not expose this apparatus to dripping or splashing.
Do not put objects filled with liquids, such as vases on the apparatus.
- To turn this apparatus off completely, you must pull the power plug out of the wall socket. Consequently, the power plug must be easily and readily accessible at all times.

FCC Statement: (for U.S.A)

Federal Communication Commission Interference Statement

This equipment has been tested and found to comply with the limits for a Class B digital device, pursuant to Part 15 of the FCC Rules. These limits are designed to provide reasonable protection against harmful interference in a residential installation. This equipment generates, uses and can radiate radio frequency energy and, if not installed and used in accordance with the instructions, may cause harmful interference to radio communications. However, there is no guarantee that interference will not occur in a particular installation. If this equipment does cause harmful interference to radio or television reception, which can be determined by turning the equipment off and on, the user is encouraged to try to correct the interference by one of the following measures:

- Reorient or relocate the receiving antenna.
- Increase the separation between the equipment and receiver.
- Connect the equipment to an outlet that is on a different circuit than the outlet the receiver is connected to.
- Consult the dealer or an experienced radio/TV technician for help.

FCC Caution: Any changes or modifications not expressly approved by the party responsible for compliance could void the user's authority to operate this equipment. This device complies with Part 15 of the FCC Rules. Operation is subject to the following two conditions: (1) This device may not cause harmful interference, and (2) this device must accept any interference received, including interference that may cause undesired operation.

For products available in the US and Canadian markets, only channels 1~11 are available. You cannot select other channels.

This device and its antennas must not be co-located or operated in conjunction with any other antenna or transmitter except in accordance with FCC multi-transmitter product procedures.

This device operates in the 5.15~5.25GHz frequency range. It is restricted to indoor environments only.

IMPORTANT NOTE

FCC Radiation Exposure Statement

This equipment complies with FCC radiation exposure limits set forth for an uncontrolled environment. This equipment should be installed and operated so there is at least 8 inches (20cm) between the radiator and your body.

■ IC Statement: (for Canada)

CAN ICES-3 (B)/NMB-3(B)

This device complies with Industry Canada license-exempt RSS standard(s). Operation is subject to the following two conditions: (1) this device may not cause interference, and (2) this device must accept any interference, including interference that may cause undesired operation of the device.

For products available in the US and Canadian markets, only channels 1~11 are available. You cannot select other channels.

This device and its antennas must not be co-located or operated in conjunction with any other antenna or transmitter except in accordance with IC multi-transmitter product procedures.

This device may automatically discontinue transmission if there is no information to transmit, or an operational failure. Note that this is not intended to prohibit the transmission of control or signaling information or the use of repetitive codes where required by the technology.

To reduce potential for harmful interference to co-channel mobile satellite systems, this device operates in the 5150-5250 MHz band, and is for indoor use only.

IMPORTANT NOTE:

IC Radiation Exposure Statement:

This equipment complies with IC RSS-102 radiation exposure limits set forth for an uncontrolled environment. This equipment should be installed and operated so there is at least 8 inches (20cm) between the radiator and your body.

■ Important Safety Instructions

Read these operating instructions carefully before using the unit. Follow all the safety instructions listed below.

Keep these operating instructions handy for future reference.

- 1 Read these instructions.
- 2 Keep these instructions.
- 3 Heed all warnings.
- 4 Follow all instructions.
- 5 Do not use this apparatus near water.
- 6 Clean only with a dry cloth.
- 7 Do not block any ventilation openings. Install in accordance with the manufacturer's instructions.
- 8 Do not install near any heat sources such as radiators, heat registers, stoves, or other apparatus (including AV receivers) that produce heat.
- 9 Do not defeat the safety purpose of the polarized or grounding-type plug. A polarized plug has two blades with one wider than the other. A grounding type plug has two blades and a third grounding prong. The wide blade or the third prong are provided for your safety. If the provided plug does not fit into your outlet, consult an electrician for replacement of the obsolete outlet.
- 10 Protect the power cord from being walked on or pinched particularly at plugs, convenience receptacles, and the point where it exits the apparatus.
- 11 Only use attachments/accessories specified by the manufacturer.
- 12 Use only with the cart, stand, tripod, bracket, or table specified by the manufacturer, or sold with the apparatus. When a cart is used, use caution when moving the cart/apparatus combination to avoid injury from tip-over.
- 13 Unplug this apparatus during lightning storms or when unused for long periods of time.
- 14 Refer all servicing to qualified service personnel. Servicing is required when the apparatus has been damaged in any way, such as when the power-supply cord or plug is damaged, liquid has been spilled or objects have fallen into the apparatus, the apparatus has been exposed to rain or moisture, does not operate normally, or has been dropped.



Safety precautions

Power Supply Precautions

- Do not overload outlets or extension cords.
 - This may result in abnormal heat or fire.
- Do not plug in or unplug the power cord with wet hands.
- Do not place the product near heating equipment.
- To clean the power plug blades, remove the plug from the wall outlet and wipe the blades with a dry cloth only.
- Do not bend the power cord or pull it forcefully.
- Do not put heavy objects on the power cord.
- Do not plug the power cord into a loose or damaged outlet.
- Fully insert the power cord's plug into the the wall outlet so that the plug is firmly attached to the outlet.
 - If the connection is unstable, there is a risk of fire.

Installation Precautions

- Do not install the product near equipment or objects that generate heat or produce fire (candles, mosquito coils, heaters, radiators, etc.). Do not install in direct sunlight.
- When moving the product, turn off the power and disconnect all cords (include the power cord) from the unit.
 - A damaged cord may cause a fire and poses a risk of electric shock.
- Installing the product in environments with high heat or humidity, dust, or extreme cold, can lead to quality problems or cause the product to malfunction. Before you install the product in an environment that is outside the norm, please contact a Samsung service center for additional information.
- When placing the product on a shelf, cabinet, or desk, make sure the top panel faces upwards.
- Do not place the product on an unstable surface (e.g. a shaky shelf, a tilted desk, etc.).
 - Dropping the product can cause it to malfunction and poses a risk of injury. Severe vibration or impact can also cause the product to malfunction and lead to a fire hazard.
- Install your product with enough space around it for ventilation.
 - Leave at least 4 inches (10cm) at the rear of the product and more than 2 inches (5cm) on each side of the product.
- Keep the plastic packing materials out of reach of your children.
 - Children playing with the plastic packing materials run the risk of suffocation.

■ Usage Precautions

- Using for an extended time at high volume may cause serious damage to your hearing.
 - If you are exposed to sound louder than 85db for an extended time, you may adversely affect your hearing. The louder the sound is, the more seriously damaged your hearing may become. Note that an ordinary conversation is between 50 to 60 db and road noise is approximately 80 db.
- This product contains dangerous high voltage. Do not attempt to disassemble, repair, or modify it yourself.
 - Contact a Samsung service center when your product is in need of repair.
- Do not place any container that contains liquid on the product (e.g. a vase, beverages, cosmetics, chemicals, etc.). Do not allow any metal objects (e.g. coins, hair clips, etc.) or flammable material (e.g. paper, matches, etc.) to enter the product (through the air vents, I/O ports, etc.).
 - If any harmful material or liquid enters the product, turn off the product immediately, unplug the power cord, and then contact a Samsung service center.
- Do not drop the product. In case of a mechanical breakdown, disconnect the power cord and contact a Samsung service center.
 - There is a risk of fire or electric shock.
- Do not hold or pull the product by the power cord or the signal cable.
 - A damaged cable can cause the product to malfunction, cause a fire, and poses a risk of electric shock.
- Do not use or keep flammable materials near the product.
- If the product emits an abnormal sound or a burnt smell or smokes, unplug the power-cord immediately and contact a Samsung service center.
- If you smell gas, ventilate the room immediately. Do not touch the power plug of the product. Do not turn the product off or on.
- Do not strike or subject the product to a sudden shock. Do not pierce the product with a sharp object.

■ Cleaning Precautions

- Never use alcohol, solvents, waxes, benzene, thinners, air freshener, or lubricants to clean the product, or spray insecticide on the product.
 - Using any of these materials can discolor the exterior coating or cause it to split or peel off, or remove the labelling on the product.
- To clean the product, unplug the power cord, and then wipe the product with a clean, dry, soft cloth (Microfiber, cotton).
 - Avoid leaving dust on the product. Dust can scratch its the surface.

Additional Information

About NFC

- NFC tagging to establish a Bluetooth connection will not work while the product is being powered on and off.
- NFC tagging to establish a Bluetooth connection will not work while the battery indicator on the Bluetooth device is blinking.

About the Network Connection

- Depending on the wireless router used, some network operations may perform differently.
- For detailed information on networking with a wireless router or modem, refer to the router's or modem's documentation.
- Select one wireless channel that is not used currently. If the selected channel is used by another communication device nearby, radio interference may result in communication failure.
- In compliance with the newest Wi-Fi certification specifications, the HUB does not support WEP, TKIP, or TKIP-AES (WPA2 Mixed) security encryption in networks running in the 802.11n mode.
- By its nature, wireless LAN may experience radio interference depending on the environmental conditions (such as wireless router performance, distance, obstruction, interference with other wireless devices, etc.)
- WEP encryption does not work with WPS (PBC) / WPS (PIN).

Compatible products

- Mobile : Android 2.3.3 (Gingerbread) or above



NOTE

- ✓ Some devices may not be compatible with the product.

Copyright

© 2013 Samsung Electronics Co.,Ltd.

All rights reserved; No part or whole of this user's manual may be reproduced or copied without the prior written permission of Samsung Electronics Co.,Ltd.

Contents

SAFETY INFORMATION

Regulatory Compliance Statements.....	2
Warning	2
FCC Statement: (for U.S.A)	2
IC Statement: (for Canada).....	3
Important Safety Instructions.....	4
Safety precautions.....	5
Power Supply Precautions	5
Installation Precautions.....	5
Usage Precautions	6
Cleaning Precautions	6
Additional Information	7
About NFC.....	7
About the Network Connection	7
Compatible products.....	7
Copyright	7

UNDERSTANDING YOUR M7

Before you begin	12
Communication Basics	12
Basic Connection	12
How you can enjoy your M7	13

GETTING STARTED

Top Panel	14
Rear Panel.....	15
Accessories.....	16
Available Accessories (Not Included).....	16
Connecting the Power Cable	17
Connecting the Cover-Stand	18
Separating the cover-stand	19
Installing on a wall.....	20
Attaching the toroidal ferrite core to the power cord of the M7.....	21
Looping the power cable around the toroidal ferrite core	21
Sleep Mode.....	22

CONNECTIONS

Connecting with a HUB (Not Included).....	23
Connecting the M7(s) to Your Network with a HUB (Not Included).....	23
Connecting without a HUB (Not Included).....	26
Connecting the M7 to Your Network with a LAN Cable (For a Single M7)	26
Connecting the M7 to Your Network via the WPS Method (For a Single M7).....	28
Connecting the M7 to Your Network via the Wi-Fi Setup Method (For a Single M7) .	30
Connecting the M7 to Bluetooth Devices.....	33
Disconnecting Bluetooth	34

Connecting with NFC function	35
Connecting with TV SoundConnect function.....	36
Disconnecting TV SoundConnect.....	37
Connecting to the AUX IN.....	38
Disconnecting AUX connection	39
Adding an M7	40
Adding an extra M7 to a HUB that is connected to an M7	40
Adding another M7 and Hub to a single M7 in use	41
Adding a HUB	43
Relocating the M7	43

FUNCTIONS

Installing the Samsung Multiroom App.....	44
Accessing the Samsung Multiroom App	44
Using the Samsung Multiroom App	45
Renaming a connected M7	45
Switching the input source	45
Changing the sort order of listed M7s	46
Grouping M7s	47
Playing a Song	49
Sorting the song.....	49
Adding tracks to a Playlist	50
Creating a Playlist.....	51
Listening to a radio station	53

Setting My Preset.....	53
Setting the Default Radio Stations in Speaker Preset.....	55
Searching for a Radio Station.....	55
Playing music from content providers	56
Playing music from the Amazon cloud player.....	56
Playing music from a selected device	56
Using the Settings menu.....	57
Guide.....	57
Service.....	58
Speaker Settings.....	59
Clock	62
Support.....	63
Open source licenses.....	64
App Version.....	64
Reset your product.....	65
Resetting the M7	65
Resetting the HUB (Not Included).....	65

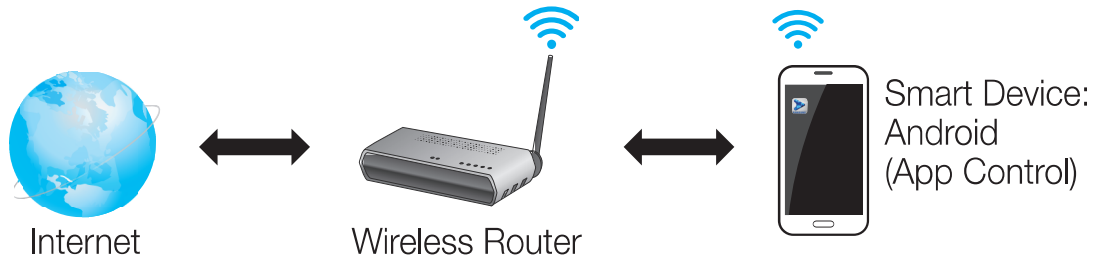
APPENDIX

Troubleshooting.....	66
Specifications	69
Open Source License Notice	70

Understanding Your M7

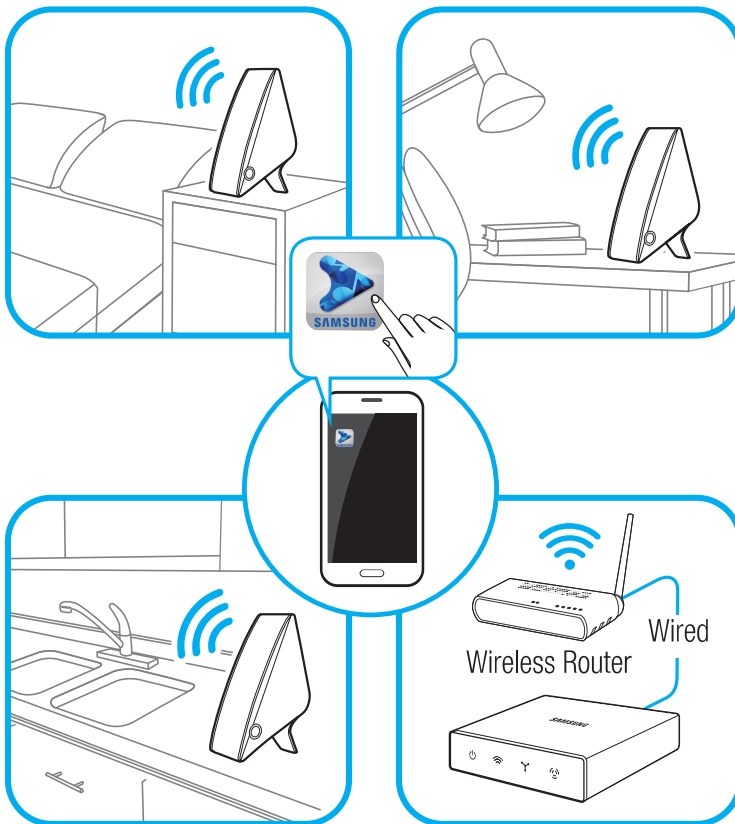
Before you begin

Communication Basics



- 1 Requirements: Wireless Router, Smart Device
- 2 The wireless router should be connected to the Internet.
- 3 The smart device should be connected to the router via a Wi-Fi connection.

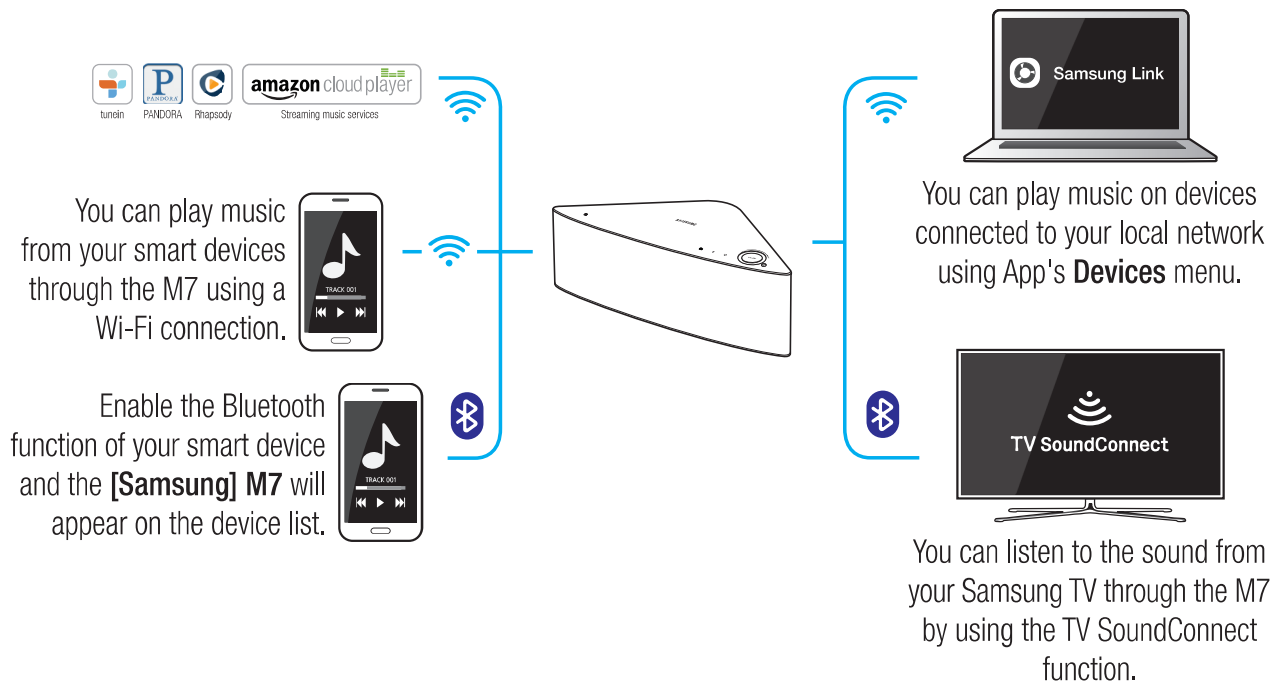
Basic Connection



- If you have a HUB, you can use two or more M7s in a multi-room configuration.

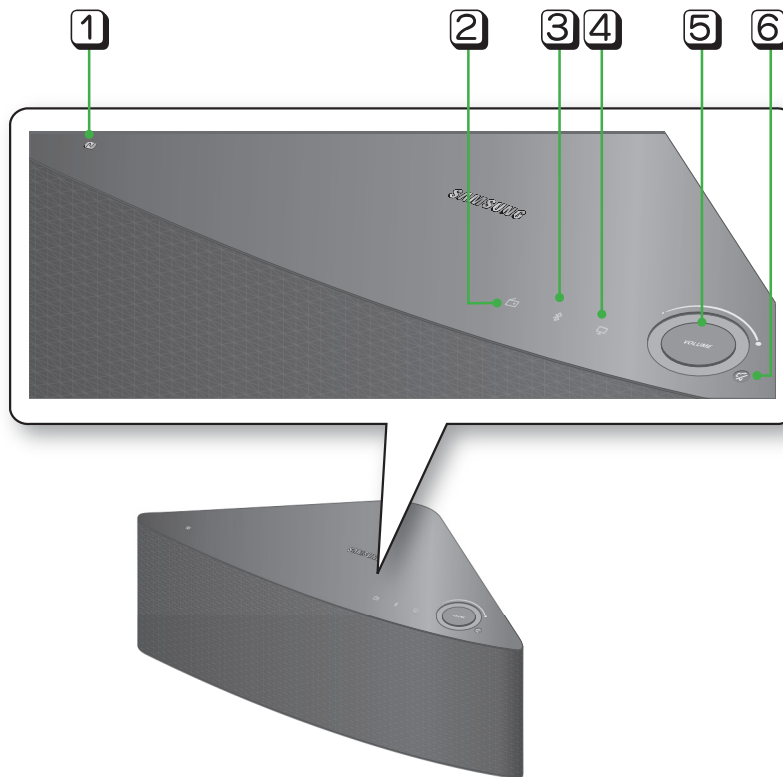
How you can enjoy your M7

- Stream music through Internet radio, music services, or from the cloud.
- Play music through a Wi-Fi connection from your smart device.
- Play music from your phone, PC, or smart devices via Bluetooth.
- Use the TV SoundConnect function to play sound from your Samsung TV.
- If you have connected a HUB, you can configure multiple M7s in a Multi-room set-up with Internet radio, music services, and Samsung Link.
 - Note that Bluetooth and TV SoundConnect are not configured for Multi-room set-ups.







Getting Started

Top Panel

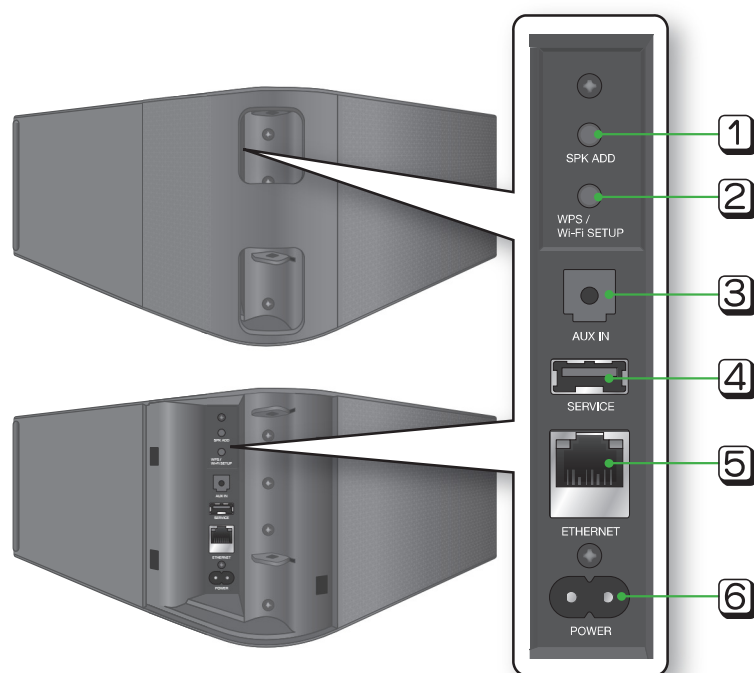


1	NFC Tag	Connect your NFC compatible device via Bluetooth to the M7 using the simple NFC tagging procedure.
2	Internet Radio Preset	Press this button to listen to an Internet radio station. Each time you press the button, you change the radio station.
3	Bluetooth button	Press this button to enable Bluetooth.
4	TV SoundConnect button	Press this button to enable TV SoundConnect.
5	Volume Control	Controls the volume level.
6	Mute button	Mutes the sound from this M7. Press again to restore the sound to the previous volume level.

NOTES

- ✓ Press and hold the  **Mute** button for more than 5 seconds to place the M7 into Sleep Mode.
- ✓ Press and hold the  **TV SoundConnect** button for more than 5 seconds to reset the TV SoundConnect and connect a new TV.
- ✓ You can listen to a radio station by pressing the  **Internet Radio Preset** button on the top panel of the M7. Each time you press the button, the M7 changes the station.
- ✓ Enable your smart device's Bluetooth by touching it to the  **NFC Tag** on the top panel of the M7.

Rear Panel



1	SPK ADD button (Speaker Add)	Press this button to add an M7 to your network.
2	WPS/Wi-Fi SETUP button	Press this button to connect your M7 to your network using WPS or Wi-Fi setup.
3	AUX IN	Lets you connect the M7 to the analog output of a smart device.
4	SERVICE	For service only. Lets service technicians update the firmware of the M7.
5	ETHERNET	Lets you connect the M7 to your network using a LAN cable.
6	POWER	Connection for the M7's power cord.



NOTES

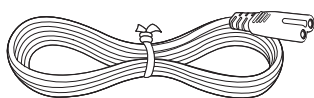
- ✓ **SPK ADD** Button: Press for 1 second to pair your M7 with a HUB.
- ✓ **WPS / Wi-Fi SETUP** Button:
 - Press for 1 second to connect the M7 to your wireless router using WPS.
 - Press and hold down for more than 5 seconds until you hear a fast, 3 note beep to connect the M7 to your network through your smart device using the Wi-Fi Setup method.

Accessories

Confirm you have the supplied accessories shown below.



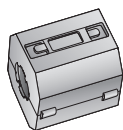
Wireless Audio - Multiroom
M7



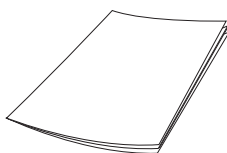
Power cord
(WAM750 : 3903-000910
WAM751 : 3903-000911)



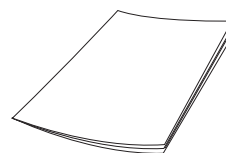
Cover-Stand
(WAM750 : AH96-02695A
WAM751 : AH96-02695B)



Toroidal ferrite core
(3301-000144)

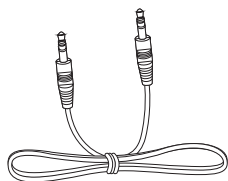


Quick Guide
(AH68-02665A)



Getting started
(AH68-02665D)

Available Accessories (Not Included)



Audio cable



HUB: WAM250



(6ea)



(M5 X L50mm-6ea)

Wall Mount

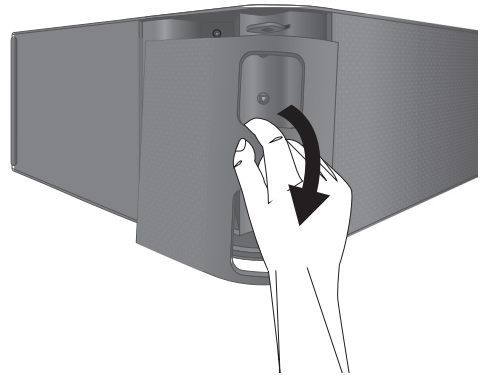


NOTES

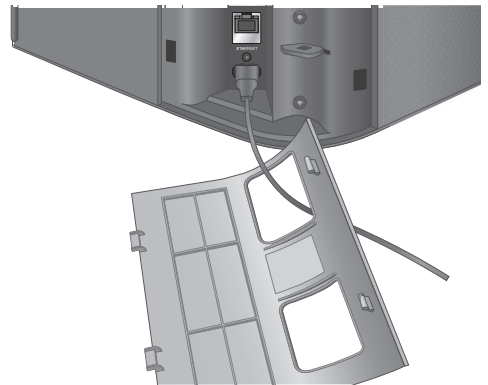
- ✓ Information on available accessories and their release dates can be found on the Samsung website.
- ✓ When purchasing an accessory, check whether it is compatible with the M7.
- ✓ Use authentic Samsung accessories. Damage and problems caused by unauthorized accessories can void your warranty.

Connecting the Power Cable

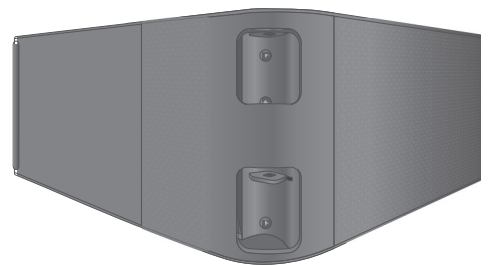
- 1 Remove the rear cover.



- 2 Insert the power cable through the rear cover hole into the M7 power port.



- 3 Close the rear cover.



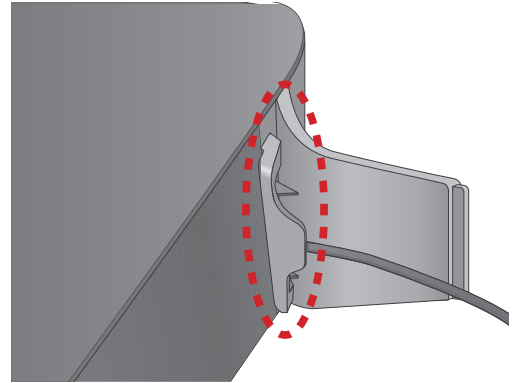


Connecting the Cover-Stand

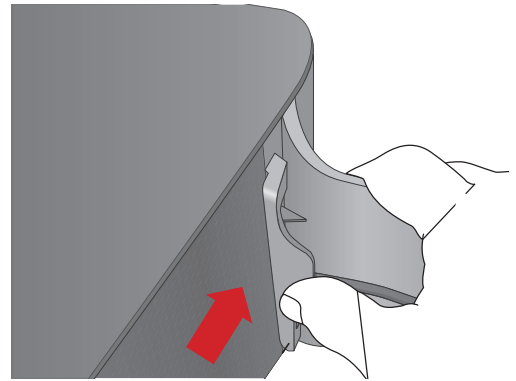
- 1** Before attaching the Cover-Stand, remove the rear cover.
Insert the power cable through the Cover-Stand hole into the M7 power port.
- 2** The inside of the Cover-Stand has two sides. One side (A) has four tabs - two large tabs and two small tabs. The other side has two large tabs only. Insert the two large tabs on side A into the two slots in the device marked A in the diagram.

■ Separating the cover-stand

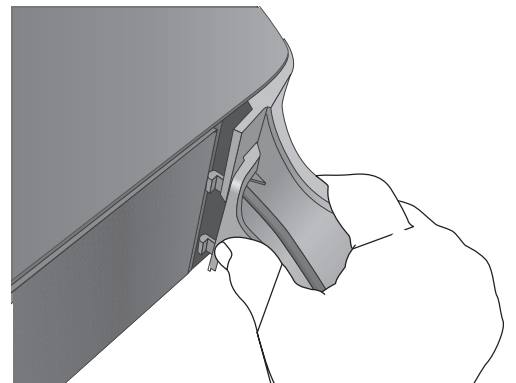
- 1 Locate the Cover-Stand's handle. See the diagram on the right.



- 2 Push the Cover-Stand's handle while applying force to the Cover-Stand in the direction of the arrow.
Important : Push the Cover-Stand straight ahead, parallel to the surface of the M7.
You may need to use some force.



- 3 The tabs release and the Cover-Stand separates as shown in the figure.



NOTES

- ✓ Do not lift up the M7 by the stand. It may separate from the stand and cause damage or personal injury.
- ✓ When installing the M7 vertically, please make sure to use the stand.
If you do not, vibrations from the M7's speakers may cause the M7 to tip over or fall, damaging it.