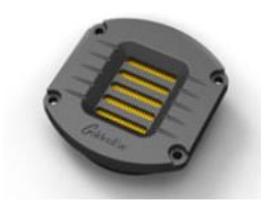


	TRITON ONE.R	TRITON TWO+	TRITON THREE+
<b>Dimensions</b> (height is with base installed, no spikes)	5-3/4" (14.6 cm) W (front) x 8" (20.3 cm) W (rear) x 16-5/8" (42.3 cm) D x 54" (137.2 cm) H  Base: 12-3/8" (31.4 cm) W x 19-3/4" (50.2 cm) D	5-1/4" (13.3 cm) W (front) x 7-1/2" (19 cm) W (rear) x 15" (38.1 cm) D x 48" (122 cm) H  Base: 11-1/2" (29.2 cm) W x 18" (45.7 cm) D	5-1/4" (13.3 cm) W (front) x 7" (17.8 cm) W (rear) x 13" (33 cm) D x 44" (111.8 cm) H  Base: 11-1/2" (29.2 cm) W x 16-1/4" (41.3 cm) D
<b>Weight</b>	Product: 80 lbs (36.3 kg) / Shipping: 105 lbs (47.6 kg)	Product: 60 lbs (27.2 kg) / Shipping: 73 lbs (33.1 kg)	Product: 45 lbs (20.4 kg) / Shipping: 53 lbs (24 kg)
<b>Frequency Response</b>	13 Hz - 35 kHz	16 Hz - 35 kHz	21 Hz - 35 kHz
<b>Efficiency</b>	92 dB	91 dB	90 dB
<b>Nominal Impedance</b>	Compatible with 8 ohms	Compatible with 8 ohms	Compatible with 8 ohms
<b>Driver Complement</b>	Three - 5" x 9" Long-Throw Quadratic Reference Subwoofer Bass Drivers, coupled to:  Four - 7" x 10" Quadratic Planar Infrasonic Radiators  Two - 5-1/4" High-Definition Cast-Basket MVPP™, Focused Field, Reference Upper-Bass/Mid Drivers  One - High-Gauss HVFR™ High-Velocity Reference Folded Ribbon Tweeter	Two - 5" x 9" Long-Throw Quadratic Subwoofer Bass Drivers, coupled to:  Two - 7" x 10" Quadratic Planar Infrasonic Radiators  Two - 4-1/2" High-Definition Cast-Basket MVPP™ Upper-Bass/Mid Drivers  One - HVFR™ High-Velocity Folded Ribbon Tweeter	One - 5" x 9" Long-Throw Quadratic Subwoofer Bass Driver, coupled to:  Two - 6-3/4" x 8" Quadratic Planar Infrasonic Radiators  One - 4-1/2" High-Definition Cast-Basket MVPP™ Upper-Bass/Mid Driver  One - HVFR™ High-Velocity Folded Ribbon Tweeter
<b>Recommended Amplification</b>	20 - 650 watt/channel	20 - 500 watt/channel	20 - 400 watt/channel
<b>Built-In Subwoofer Power Amplification</b>	1600 watt SuperSub Amplifier	1200 watt ForceField Amplifier	800 watt ForceField Amplifier

## State-of-the-art GoldenEar Technology Drivers



High-Velocity Folded Ribbon Tweeter (HVFR)

- Tweeter Diaphragm is a High Temperature Film
- High-Power Neodymium Magnets
- High Gauss Neodymium on Triton One.R
- Squeezes/Pressurizes Air Instead of Pushing It
- Greater Control, Smoother More Extended Response
- Vanishingly Low Distortion
- Dramatically Improved Dynamic Range and Detail
- Superb Dispersion Characteristics



High-Definition Cast-Basket Bass/Midrange Driver

- GoldenEar Multi-Vaned Phase Plug (MVPP) Design
- Rigid Free-Flow Cast-Basket Chassis
- Proprietary Computer Optimized Cone Topology
- High-Gauss Magnet Assembly (Focused Field on Triton One.R)
- 1" High-Temperature Kapton Former Voice Coil
- Extremely Extended Resonant-Free Linear Frequency Response Characteristics



5" x 9" Quadratic Sub-Bass Driver

- Ultra-Long Throw
- Glass Fiber and Nomex® Composite Cone
- Huge, High-Gauss Magnet Assembly
- 1.5" High-Temperature Aluminum Voice-Coil
- Quadratic Cone topology for Maximum Cone Surface Optimization



Quadratic Planar Infrasonic Radiators

- Quadratic Planar Radiators, Four on Triton One, Two on Triton Two+ and Three+
- Pressure-Coupled Loading Extends Usable Bass Performance to the Infrasonic Region
- Performs Like a well-Tuned Transmission Line but with Superior transient Performance and Control
- Inertially-balanced opposing design