

809960 & 820037 - Wolf 27" Microwave Trim Kit Installation Instructions For MWCTRIM27

<u>CONTAINS:</u>	<u>QTY</u>	<u>DESCRIPTION</u>
	6	Screws, #6-18x1"
	2	Screws, #8-15x1/2" Truss HD
	1	Top Duct Assembly
	1	Bottom Duct Assembly

<u>QTY</u>	<u>DESCRIPTION</u>
2	Panels, Decorative Trim
1	Frame Assembly
1	Installation Instructions

PROCEDURE:

1. Locate properly grounded 3-prong receptacle within 4" (102mm) from the right side and 4" (102mm) up from the bottom of the microwave oven cabinet.

⚠ CAUTION

Install the MWC24 with a 120V, 60Hz, on a dedicated circuit. This outlet must be checked by a qualified electrician to see if it is wired with correct polarity and is correctly grounded. A GFCI outlet is not recommended as this may cause product operation interruptions.

2. The floor of the opening should be constructed of plywood strong enough to support the weight of the oven and floor load (about 100lbs/.45kg). The floor should be level for proper operation of oven. Be sure to check local building code as it may require that the opening be enclosed with sides, ceiling and rear partition. The proper functioning of the oven does not require this enclosure.

TOP & BOTTOM DUCT INSTALLATION:

1. Lining up the feet of the microwave with the holes in bottom duct assembly, place microwave on the assembly (See Figure 1).
2. Assemble the top duct assembly (See Figure 2).
3. Remove the existing screws from the upper right and left rear of the back of the microwave (See Figure 3).
4. Place the top duct assembly on the microwave. Reinsert screws removed earlier, through assembly into original screw holes (See Figure 3).

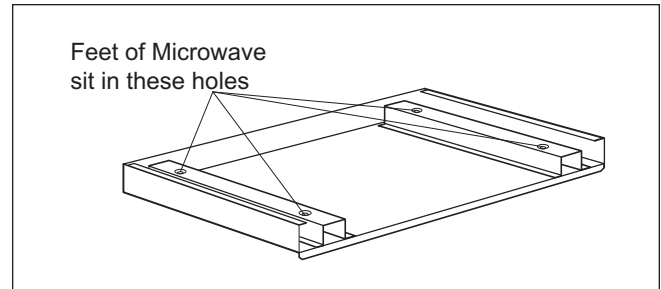


Figure 1. Bottom Duct Assembly

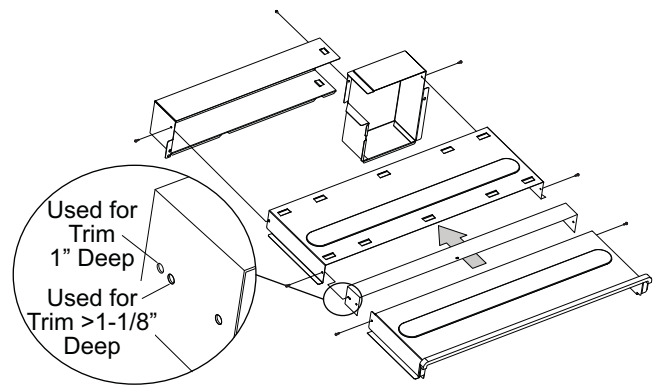


Figure 2. Top Duct Assembly

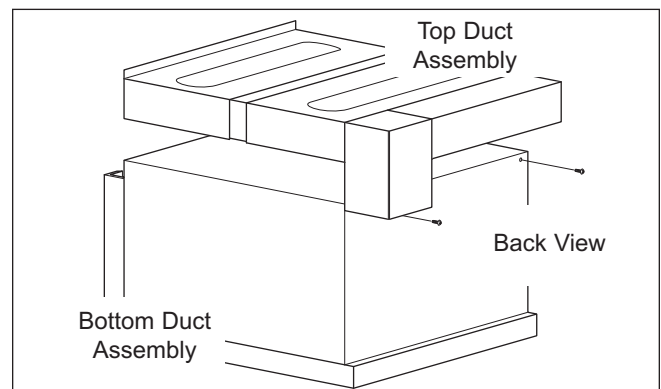


Figure 3. Attaching Top Duct to Microwave

809960 & 820037 - Wolf 27" Microwave Trim Kit Installation Instructions For MWCTRM27

- Place the microwave oven adjacent to the wall or cabinet opening. Plug power cord into outlet.
- Carefully guide the completed assembly between the bottom cleats and push the assembly back. Slide the assembly approximately 1/4" to the right of the center of cabinet opening to allow proper clearance for microwave door to open and close. When both top and bottom ducts are assembled and correctly placed, their flanges will be tight against the top and bottom outer edge of opening (See Figure 4).

- Secure bottom duct assembly using the two #8-15 x 1/2" screws.

NOTE: Verify that the power cord is not pinched between the oven and the wall.

- Attach the frame assembly directly to the cabinet frame, using four #6-18 x 1" wood screws. The inside edges of side frames should coincide with the edges of the cabinet cutout (See Figure 5).

NOTE: Always be sure to pre-drill a pilot hole before installing screws to avoid damage to cabinet or trim kit hardware.

NOTE: The flanged side of the frame assembly should be placed on the left side of the cabinet opening.

- Adhere the decorative trim panels to the side brackets so that they are tight to the side and bottom of the frame (See Figure 6).

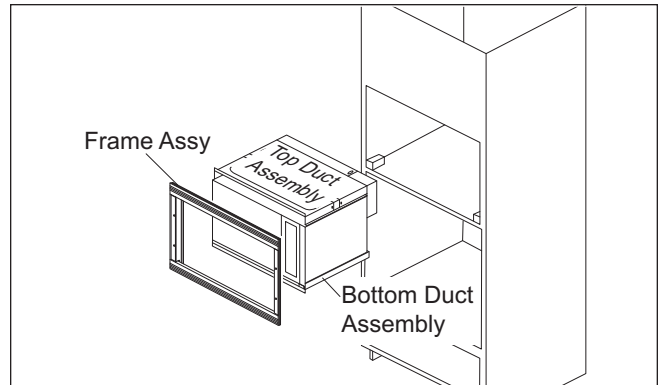


Figure 4. Placing Microwave in Cabinet Cutout

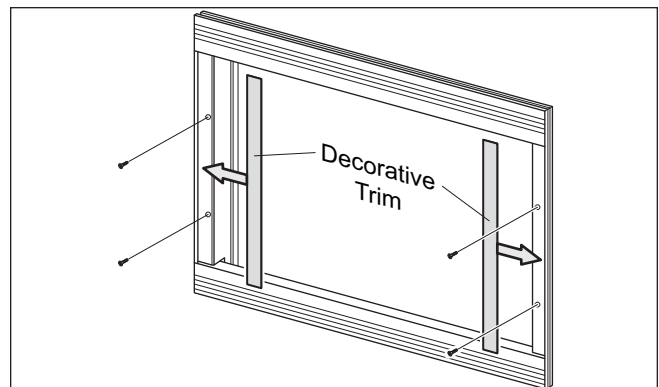


Figure 5. Attaching Decorative Trim Panels

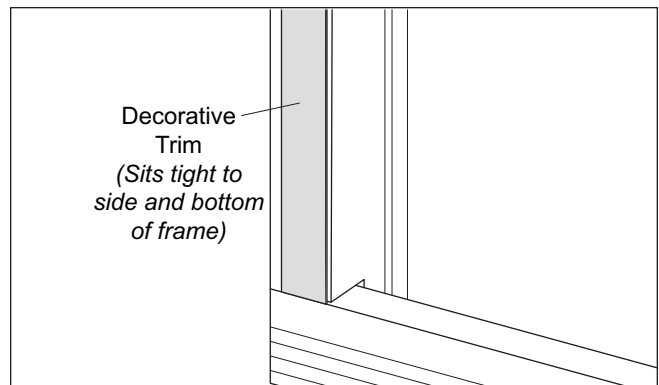


Figure 6. Decorative Trim / Frame Assembly