

DETAILS BEDS

CUSTOM SOURCE

FULLY UPHOLSTERED

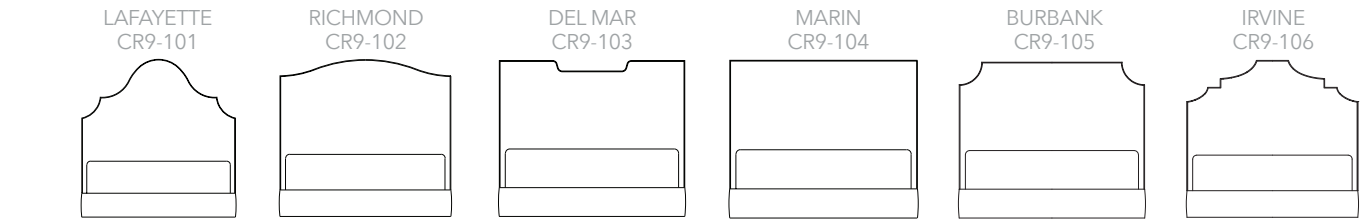


CR9-101-KU-72 Lafayette Fully Upholstered Bed
King Fully Upholstered, Standard Height, No Border and Tapered Foot

Steps to configure your Details (CR9-) Fully Upholstered Bed or Headboard Only (See reverse Steps for Wood Trim Upholstered Bed or Headboard Only.)

1 - SELECT BED STYLE: Choose from 6 styles.

All Bed styles are also available as Headboards Only (no Foot option on Headboards Only). Indicate CR9- then Style number to create your SKU.



2 - SELECT BED SIZE:

Fully Upholstered Beds are available as Twin (TU), Queen (QU), King (KU), and California King (CU). Fully Upholstered Headboards Only are available as Twin (TU-HB), Queen (QU-HB), King (KU-HB) and California King (KU-HB). Add the Size abbreviation in your SKU.

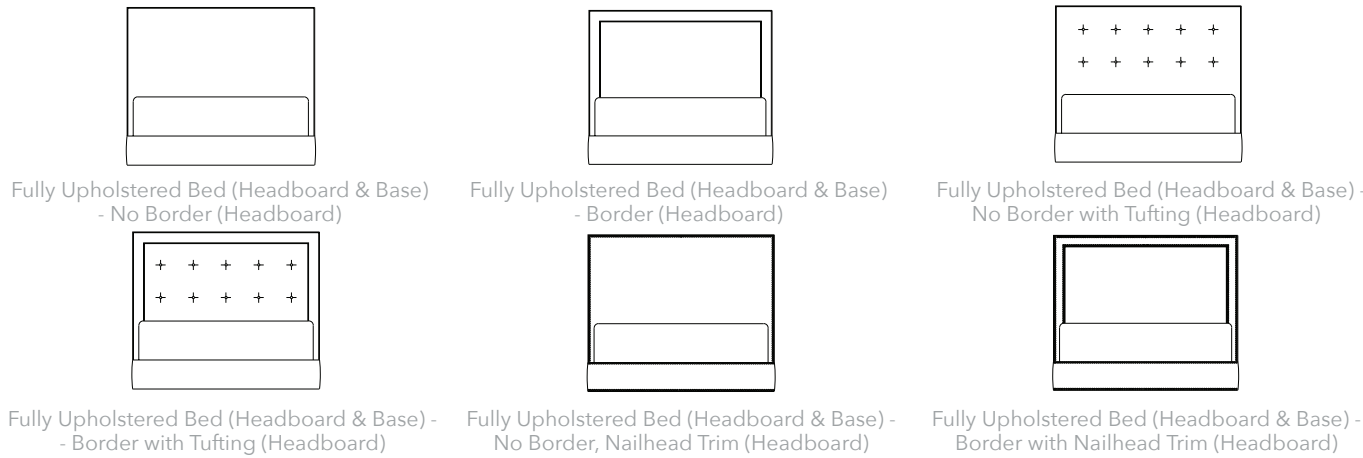
3 - SELECT BED HEIGHT, STANDARD OR TALL:

All Fully Upholstered Beds and Headboards Only are offered in two heights, STANDARD (STD) or TALL. TALL adds 12" to the STANDARD height. Heights vary per Bed style. Add your Height measurement to SKU.

LAFAYETTE STD H 72" TALL H 84"	RICHMOND STD H 65" TALL H 77"	DEL MAR STD H 60" TALL H 72"	MARIN STD H 60" TALL H 72"	BURBANK STD H 60" TALL H 72"	IRVINE STD H 65" TALL H 77"
--------------------------------------	-------------------------------------	------------------------------------	----------------------------------	------------------------------------	-----------------------------------

4 - SELECT UPHOLSTERY TREATMENT:

Choose from the following 6 Treatments available on all Bed styles. (Treatments shown below on Marin Bed.)

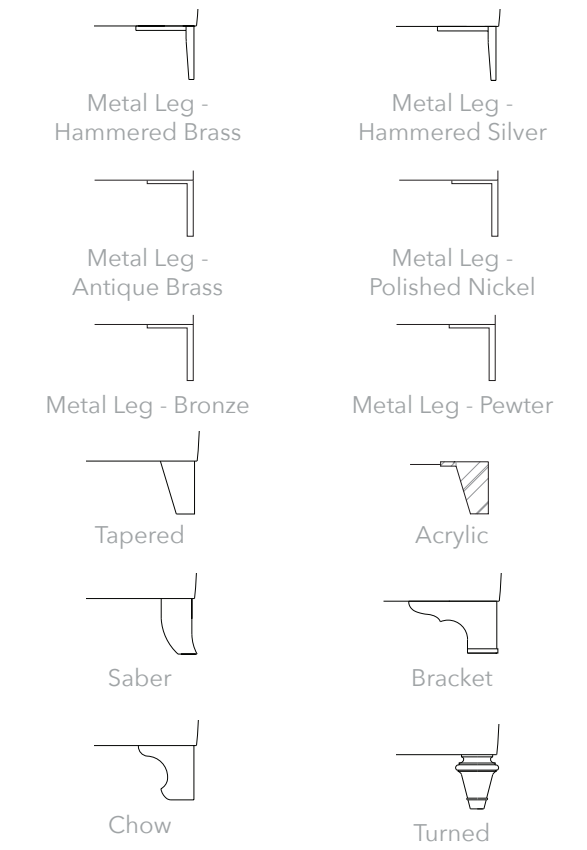


5 - SELECT ACCENT TRIM FINISH (on Headboard):

Nailheads, Contrast Cord or Welt are also available. See Price List for all options.

6 - SELECT FOOT:

Choose from 12 style options. Headboards Only do NOT have a Foot option.



7 - SELECT FABRIC or LEATHER:

See Price List for all Fabric and Leather options.

8 - SELECT PAINT/STAIN FINISH:

For Wood Foot (ONLY, if selected). See Price List for all Paint/Stain finish options.

See Price List for complete details on all components, fabrics, finishes, and accent trim options.

DETAILS BEDS

CUSTOM SOURCE

WOOD TRIM

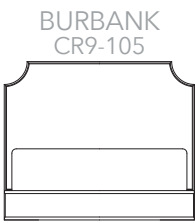
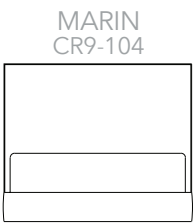
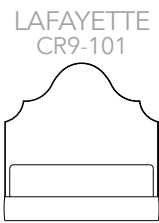


CR9-104-QW-60 Marin Wood Trim Upholstered Bed
Queen Wood Trim, Standard Height, No Border and Hammered Brass Foot

Steps to configure your Details (CR9-) Wood Trim Upholstered Bed or Headboard Only (See reverse Steps for Fully Upholstered Bed or Headboard Only.)

1 - SELECT BED STYLE: Choose from 3 styles.

All Bed styles are also available as Headboards Only (no Foot option on Headboards Only).
Indicate CR9- then Style number to create your SKU.



2 - SELECT BED SIZE:

Wood Trim Upholstered Beds are available as Queen (QW), King (KW), and California King (CW).
Wood Trim Upholstered Headboards Only are available as Queen (QW-HB), King (KW-HB) and California King (KW-HB). Add the Size abbreviation in your SKU.

3 - SELECT BED HEIGHT - STANDARD OR TALL:

All Wood Trim Upholstered Beds and Headboards Only are offered in two heights, STANDARD (STD) or TALL.
TALL adds 12" to the STANDARD height. Heights vary per Bed style. Add your Height measurement to SKU.

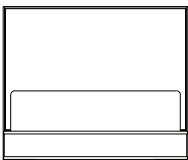
LAFAYETTE
STD H 72"
TALL H 84"

MARIN
STD H 60"
TALL H 72"

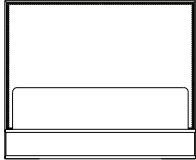
BURBANK
STD H 60"
TALL H 72"

4 - SELECT UPHOLSTERY TREATMENT (on Headboard):

Choose from the following 3 treatments available on all bed styles. (Treatments shown below on Marin Bed.)



Wood Trim Upholstered Bed
- No Border (Headboard)
(All Wood Bed Base)



Wood Trim Upholstered Bed
- No Border Nailhead Trim (Headboard)
(All Wood Bed Base)



Wood Trim Upholstered Bed
- No Border with Tufting (Headboard)
(All Wood Bed Base)

5 - SELECT ACCENT TRIM FINISH (on Headboard):

Nailheads, Contrast Cord or Welt are also available. See Price List for all options.

6 - SELECT FOOT:

Choose from 12 style options.
Headboards Only do NOT have a Foot option.



Metal Leg -
Hammered Brass



Metal Leg -
Hammered Silver



Metal Leg - Antique Brass



Metal Leg - Polished Nickel



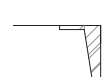
Metal Leg - Bronze



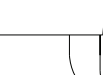
Metal Leg - Pewter



Tapered



Acrylic



Saber



Bracket



Chow



Turned

7 - SELECT FABRIC or LEATHER:

See Price List for all Fabric and Leather options.

8 - SELECT PAINT/STAIN FINISH:

For Wood Trim and Wood Foot (if selected.)
See Price List for all Paint/Stain finish options.

See Price List for complete details on all components,
fabrics, finishes, and accent trim options.