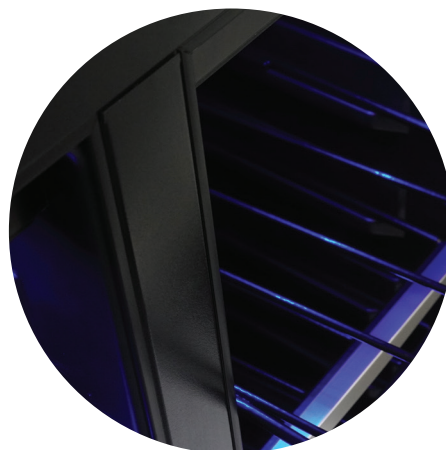


# EMMENTAL

24" FRENCH DOOR BEVERAGE CENTER

*Silhouette*

www.silhouetteappliances.com



*Extendable shelves with  
spotless steel trim*



*Modern capacitive  
touch controls*

## PRODUCT FEATURES



### **Dual Temperature Control**

Strategically placed internal sensors constantly monitor and react to help create a stable internal temperature.



### **Frost-Free Fan Forced Cooling**

Minimizes temperature stratification.



### **Interior Lighting**

Improved interior lighting 50% brighter.

**42db**

Quiet operation

# EMMENTAL

## 24" FRENCH DOOR BEVERAGE CENTER

*Silhouette*

www.silhouetteappliances.com

### BENEFITS

|                               |   |
|-------------------------------|---|
| <b>Model #</b>                | SBC051D1BSS   |
| <b>Capacity-Wine</b>          | Up to 27 wine bottles*                              |
| <b>Capacity-Beverage</b>      | Up to 60 beverage cans                              |
| <b>Volume</b>                 | 5.1 cu. ft.   |
| <b>Temp Range-Wine</b>        | 41°F-64°F(5°C-18°C)                                 |
| <b>Temp Range-Beverage</b>    | 37°F-64°F(3°C-18°C)                                 |
| <b>Noise</b>                  | 42 db   |
| <b>Door Frame</b>             | Durable 304 grade stainless steel                   |
| <b>Cabinet</b>                | Matte black textured steel                          |
| <b>Interior Finish</b>        | Matte black   |
| <b>Door Style</b>             | French door   |
| <b>Reversible Door Swing</b>  | Yes   |
| <b>Door Hinge</b>             | Designed for flush fit installation                 |
| <b>Door Handle</b>            | Crescent handle                                     |
| <b>Door Lock</b>              | No  |
| <b>Shelving</b>               | Up to 40% extension                                 |
| <b>Shelving Material-Wine</b> | Plastic coated wire                                 |
| <b>Shelving Material-Bev</b>  | Clear glass   |
| <b>Wave Wine Storage</b>      | Yes   |
| <b>Lighting Option 1</b>      | On/Off with door opening/closing                    |
| <b>Lighting Option 2</b>      | On 100% illumination for 60min                      |
| <b>Lighting Option 3</b>      | On 50% illumination for 60min                       |
| <b>Lighting Option 4</b>      | Always on   |
| <b>Light Colours</b>          | Blue LED display light with hi/low selection        |
| <b>Controls</b>               | Seamless digital controls                           |
| <b>Temperature Recall</b>     | Yes reverts to last set temperature after power out |
| <b>Alarm</b>                  | Yes, temperature and door ajar                      |

### PRODUCT SPECIFICATIONS

**UPC** 067638023078

#### Unit Dimensions

Width 23.8" in.  
Min. Height 34.1" in.  
Max. Height 34.3" in.  
Depth 23.8" in.

(DOES NOT INCLUDE HANDLE)

#### Installation

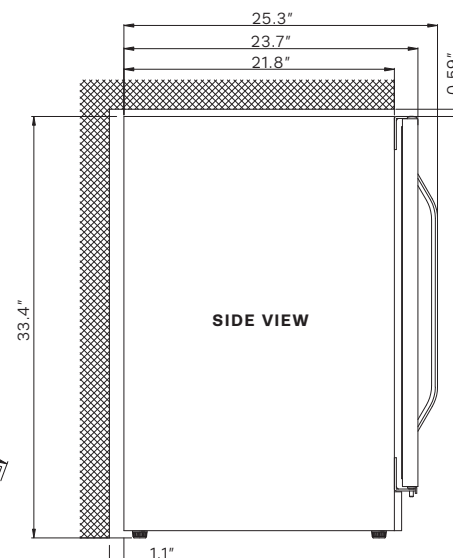
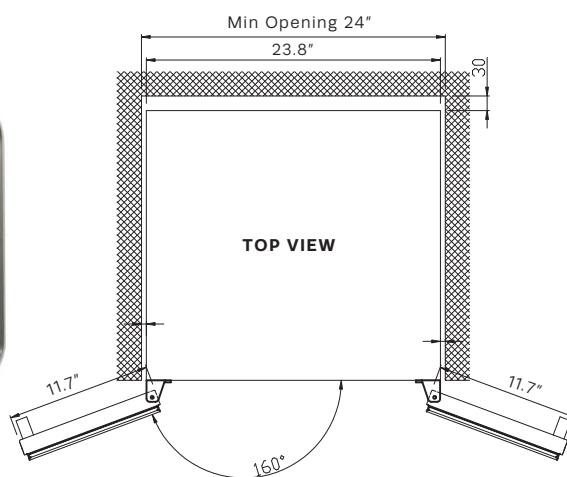
Gross Weight: 127.9 lbs.  
Built-in under counter or free standing  
Refrigerant: R600a  
Size: Min 24" wide opening required

#### AC Power

115V, 60Hz at MAX 1.5A  
Power cord length: 6.5 ft.

#### Platinum Warranty

2 year parts and labor coverage:  
In home service



\*based on standard 750ml  
Bordeaux style bottle