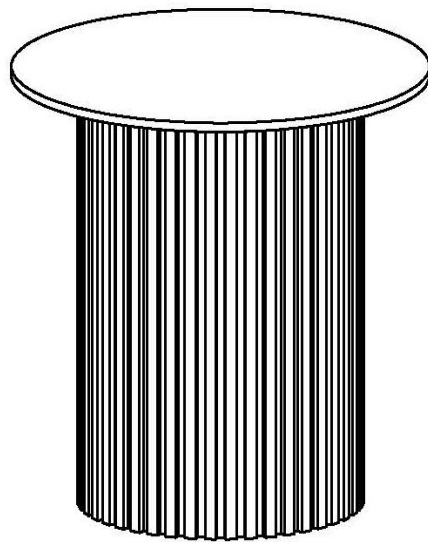




ASSEMBLY INSTRUCTIONS

COASTER FINE FURNITURE



Fine Furniture for every stage of life

708337
END TABLE

REVISION 0: 07/24/2024

ITEM:708337



ASSEMBLY INSTRUCTIONS

ASSEMBLY TIPS:

1. Remove hardware from box and sort by size.
2. Please check to see that all hardware and parts are present prior to start of assembly.
3. Please follow attached instructions in the same sequence as numbered to assure fast & easy assembly.



WARNING

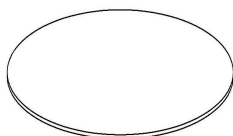
1. Don't attempt to repair or modify parts that are broken or defective. Please contact the store immediately.
2. This product is for home use only and not intend for commercial establishments.

ASSEMBLY TIME

20 MINUTES

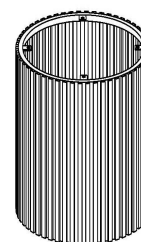
PARTS IDENTIFICATION

A TABLE TOP



1PC

B TABLE BASE



1PC

HARDWARE IDENTIFICATION

1 BOLT

1/4"x5/8"



4PCS

2 SPRING WASHER

1/4"



4PCS

3 WASHER



4PCS

4 ALLEN KEY

1/4"



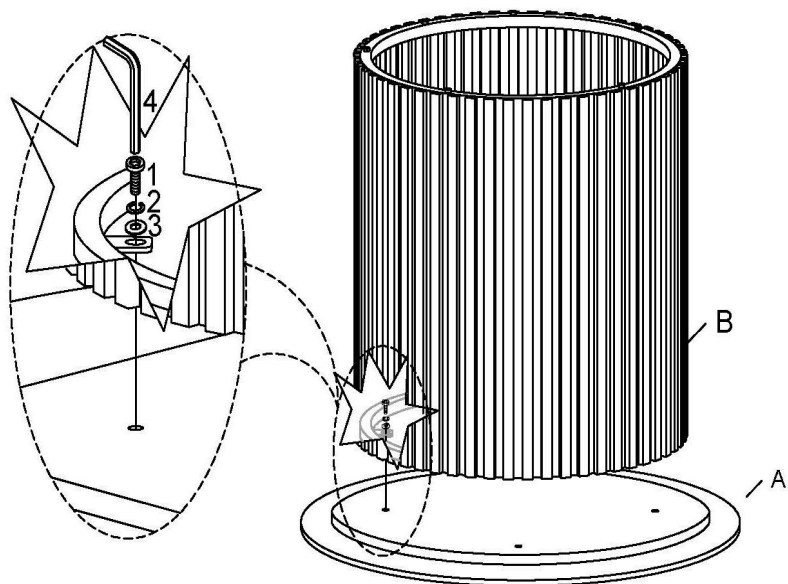
1PC

ITEM:708337

ASSEMBLY INSTRUCTIONS

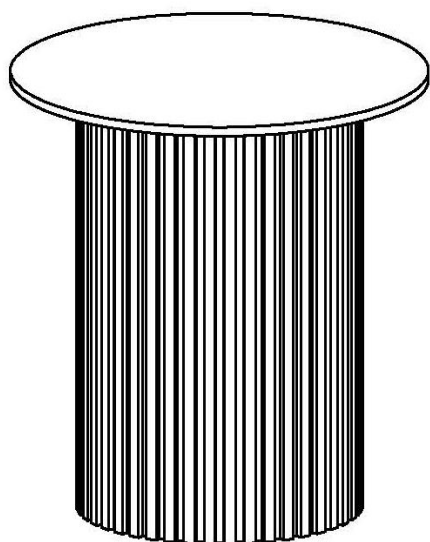


STEP 1

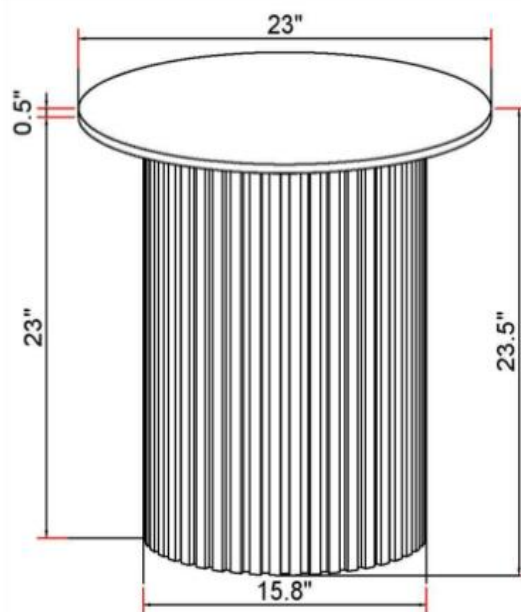


1		4PCS
2		4PCS
3		4PCS
4		1PC

STEP 2 COMPLETE



STEP 3

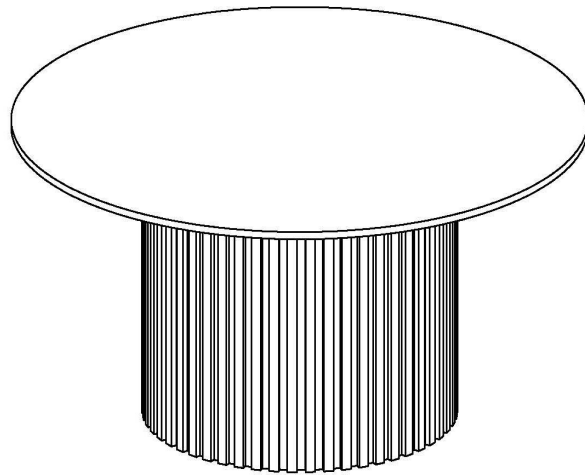


Note: Dimension tolerance $\pm 5\%$



ASSEMBLY INSTRUCTIONS

COASTER FINE FURNITURE



Fine Furniture for every stage of life

708338

COFFEE TABLE

REVISION 0: 07/24/2024

ITEM:708338



ASSEMBLY INSTRUCTIONS

ASSEMBLY TIPS:

1. Remove hardware from box and sort by size.
2. Please check to see that all hardware and parts are present prior to start of assembly.
3. Please follow attached instructions in the same sequence as numbered to assure fast & easy assembly.



WARNING

1. Don't attempt to repair or modify parts that are broken or defective. Please contact the store immediately.
2. This product is for home use only and not intend for commercial establishments.

ASSEMBLY TIME

20 MINUTES

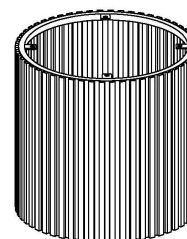
PARTS IDENTIFICATION

A TABLE TOP



1PC

B TABLE BASE



1PC

HARDWARE IDENTIFICATION

1 BOLT

1/4"x5/8"



4PCS

2 SPRING WASHER

1/4"



4PCS

3 WASHER



4PCS

4 ALLEN KEY

1/4"



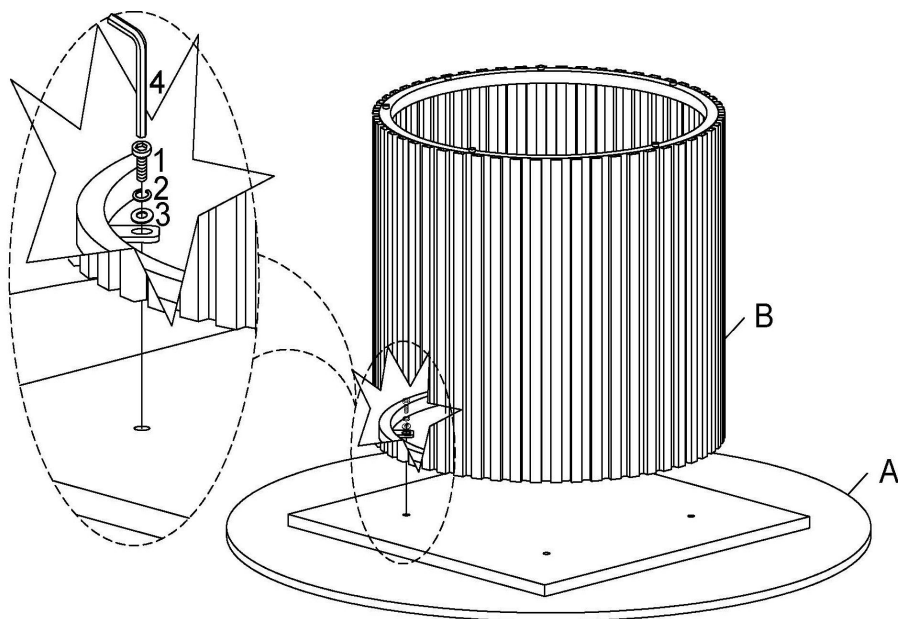
1PC

ITEM:708338

ASSEMBLY INSTRUCTIONS

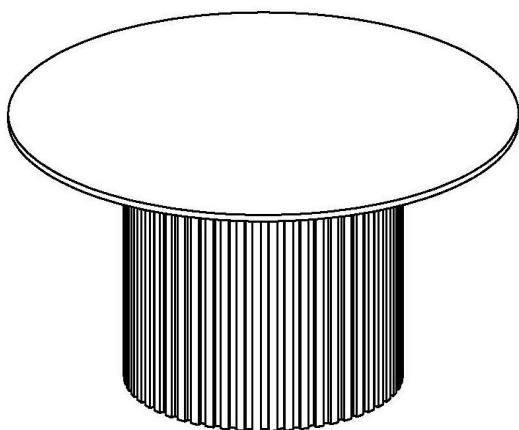


STEP 1

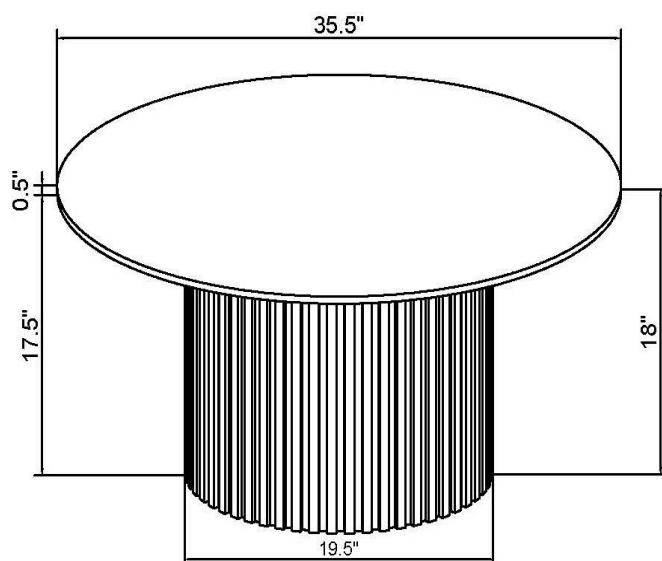


1		4PCS
2		4PCS
3		4PCS
4		1PC

STEP 2 COMPLETE



STEP 3



Note: Dimension tolerance $\pm 5\%$