

PULL OUT RACK CARTRIDGE



Two Heights :

- *7U configured* to fit in a 20" or 30" high bay
- *13U configured* to fit a 30" high bay.

Two Depth Types:

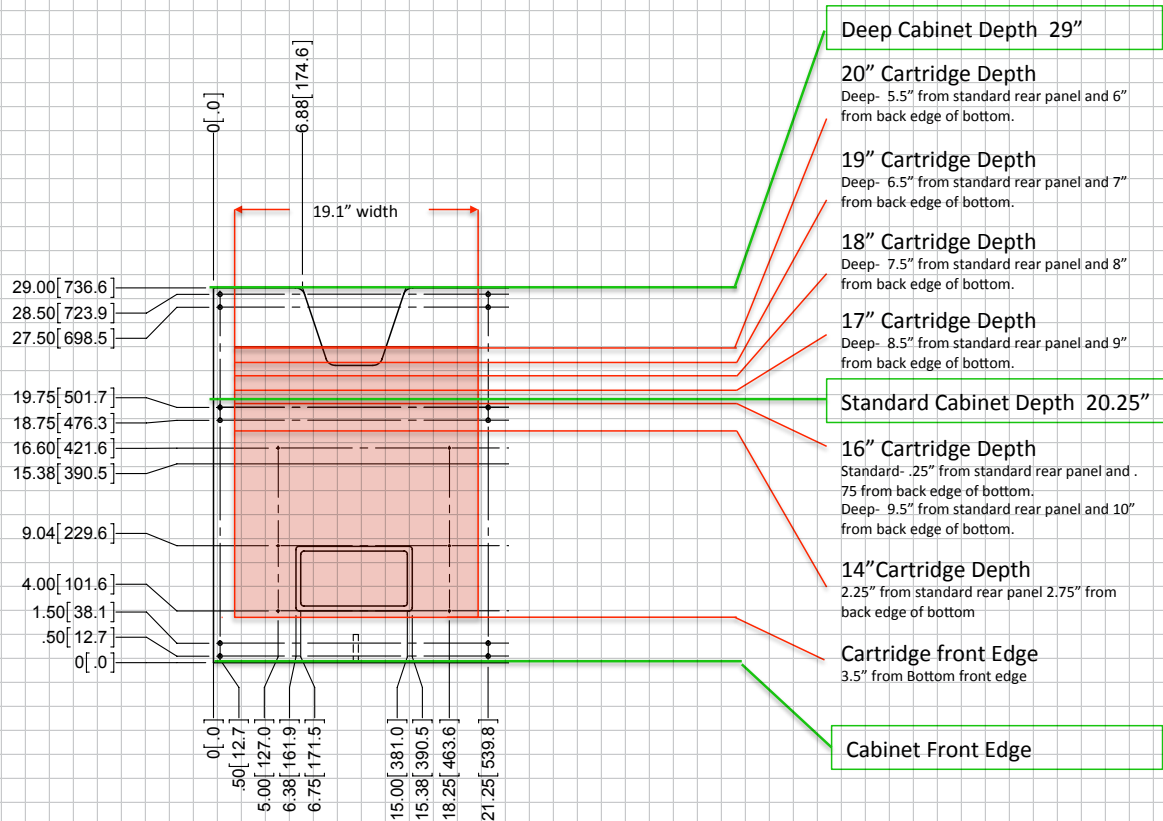
- *Fixed 14*, designed for a standard depth cabinet with room for our wire management system behind a standard rear panel.
- *Adjustable 16/20*, adjustable in 1" increments from 16 to 20". Can be used in a standard depth cabinet from 16 – 18" range with the use of an extended rear panel or take advantage of the full range of adjustability in our deep series cabinets.

Options Include:

- **Fan Kit** active cooling insert
provides front exhausting of heat to protect components.
- **Rack Shelves**
- **Face Plates**

- Pull-out 19" standard rack with rails front and back of the rack.
- Cabinet guide rails and in-line caster base provide simple use and transport.
- Compatible with any Salamander cabinet.
- Cable management wire loom.
- Weight cap 200 lb.
- Utilizes a guide and locking mechanism designed to work exclusively with Synergy and Chameleon Cabinets.
- Heavy duty bearing wheels for easy installation, removal, and maneuvering of full equipment racks during service.
- Rugged 12-gage powder coated steel construction.
- Flexible wire management allows for removal of rack from cabinet with 360 degrees of access to components without disconnecting from cabinet. An absolute step up from slide out and rotational racks service constraints.
- Tool-less removal / installation for service.

PULL OUT RACK CARTRIDGE



Front