



Convertible Frost Free Refrigerator/Freezer



EFF212W

Congratulations on the purchase of your new Epic appliance!

To activate your Warranty, please register your appliance at **www.stirlingmarathon.com** or by completing and mailing the enclosed Warranty Registration Card. We are confident you will have years of hassle-free enjoyment and ask that you please retain the Use & Care Guide for future reference and your safety.

Before installing please, read your Use & Care Guide carefully and pay special attention to the Safety & Warning information outlined in the following pages.

For immediate assistance: 1-844-309-9777
www.stirlingmarathon.com

Important Safety Information

⚠ WARNING ⚠

SUFFOCATION HAZARD AND RISK OF CHILD ENTRAPMENT

Before installing please read your Use & Care Guide carefully and pay special attention to the Safety and Warning information outlined in the following pages.

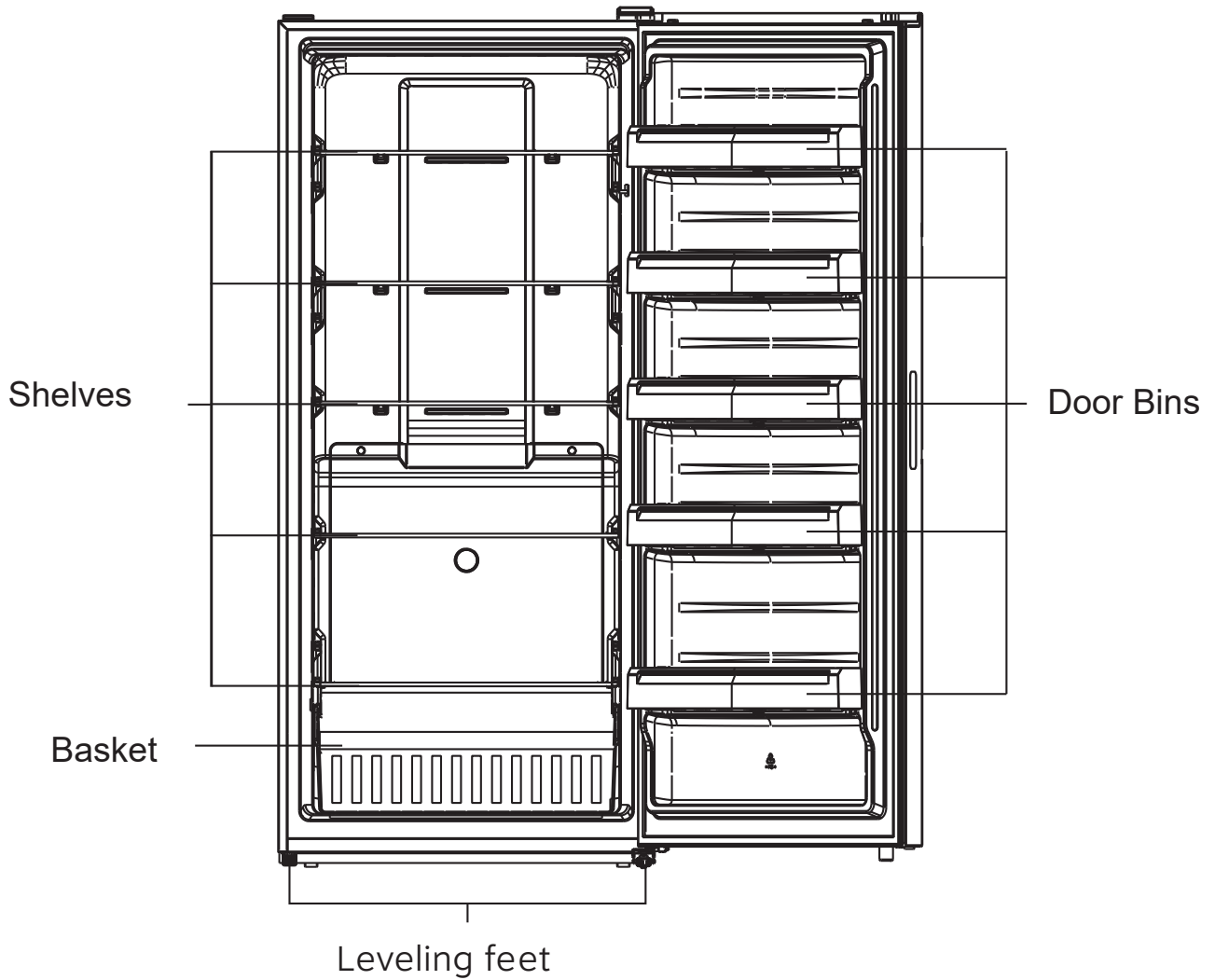
To reduce the risk of fire, electrical shock, or injury follow these basic precautions when using your appliance.

- 1) **WARNING**----Keep ventilation openings, in the appliance enclosure or in the built-in structure, clear of obstruction.
- 2) **WARNING**----Do not use mechanical devices or other means to accelerate the defrosting process, other than those recommended by the manufacturer.
- 3) **WARNING**----Do not use electrical appliances inside the appliance
- 4) **WARNING**----DANGER: Never allow children to play with, operate, or crawl inside the appliance. Risk of child entrapment.

Before you discard or recycle your old refrigerator

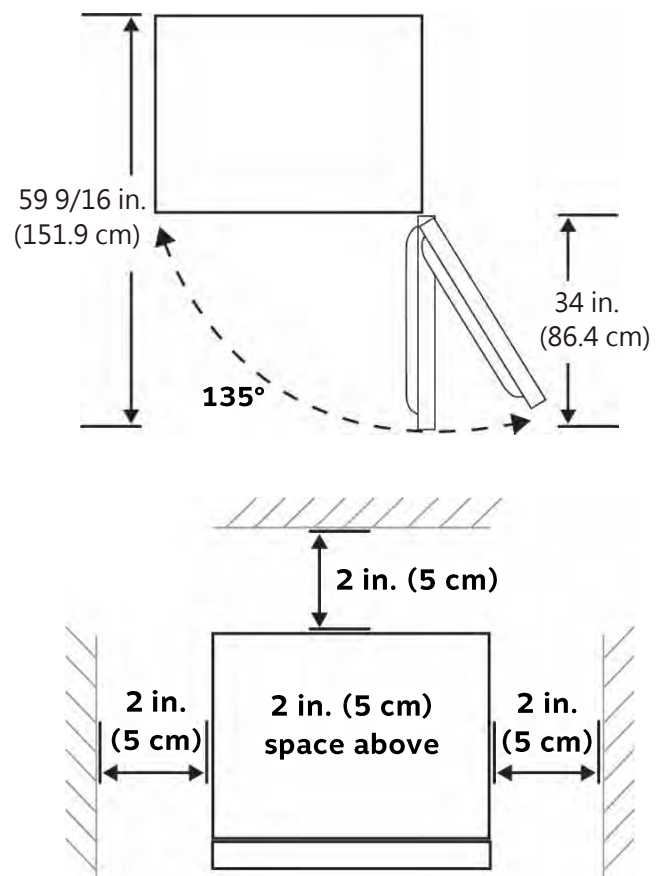
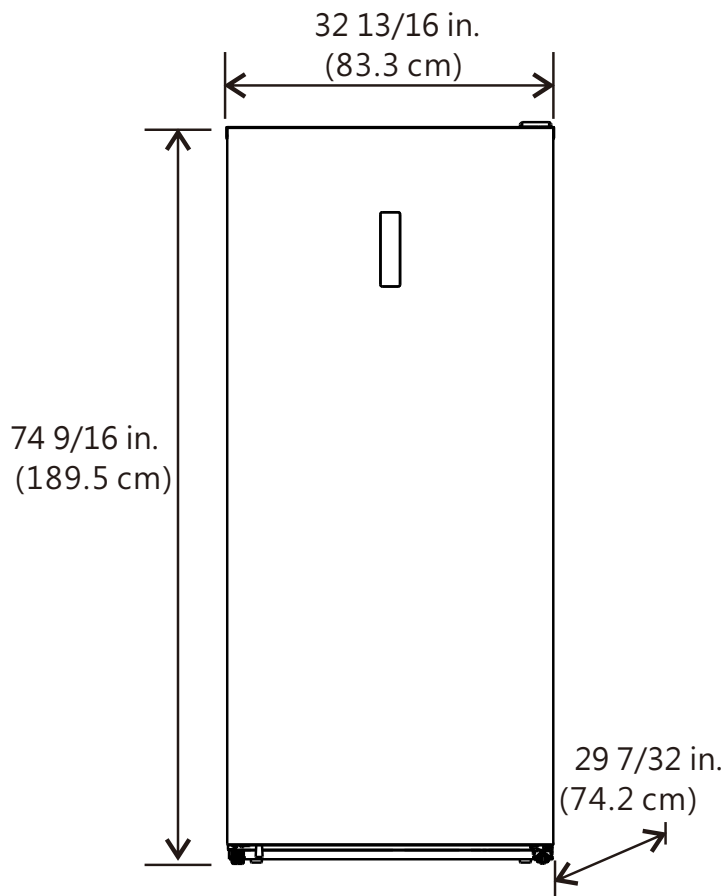
- Completely remove the doors or lids
 - Leaves the shelves in place so that children not may easily climb inside
- 5) **WARNING**----**GROUNDING INSTRUCTIONS** This appliance must be grounded. In the event of an electrical short circuit, grounding reduces the risk of electrical shock by providing an escape wire for the electrical current. This appliance is equipped with a cord having a grounding wire with a grounding plug. The plug must be plugged into an outlet that is properly installed and grounded.
 - 6) **DO NOT USE AN EXTENSION CORD**
 - 7) Use an exclusive 115V wall outlet. Do not connect your refrigerator to extension cords or together with any other appliance in the same wall outlet. Do not splice the cord.
 - 8) Always unplug before any maintenance or service on the appliance.
 - 9) If the component part is damaged, it must be replaced by the manufacturer, authorized service technician or similar qualified persons in order to avoid a hazard.
 - 10) Follow local regulations regarding disposal of the appliance due to flammable refrigerant and blowing gas. All refrigeration products contain refrigerants, which under the guidelines of federal law must be removed before disposal. It is the consumer's responsibility to comply with federal and local regulations when disposing of this product.
 - 11) This appliance is intended to be used in household and similar environment such as:
 - staff kitchen, work shop, office and other working environments;
 - farm houses and by clients in hotels, motels and other residential type environments;
 - bed and breakfast type environments;
 - catering and similar non retail applications.
 - 12) Do not store or use gasoline or any inflammable liquors and liquids inside or in the vicinity of refrigerator.
 - 13) Do not use an extension cord with this appliance. If the power cord is too short, have a qualified electrician install an outlet near the appliance. Use of an extension can negatively affect the appliance's performance.

Model Description



Installation

Dimensions & Clearance



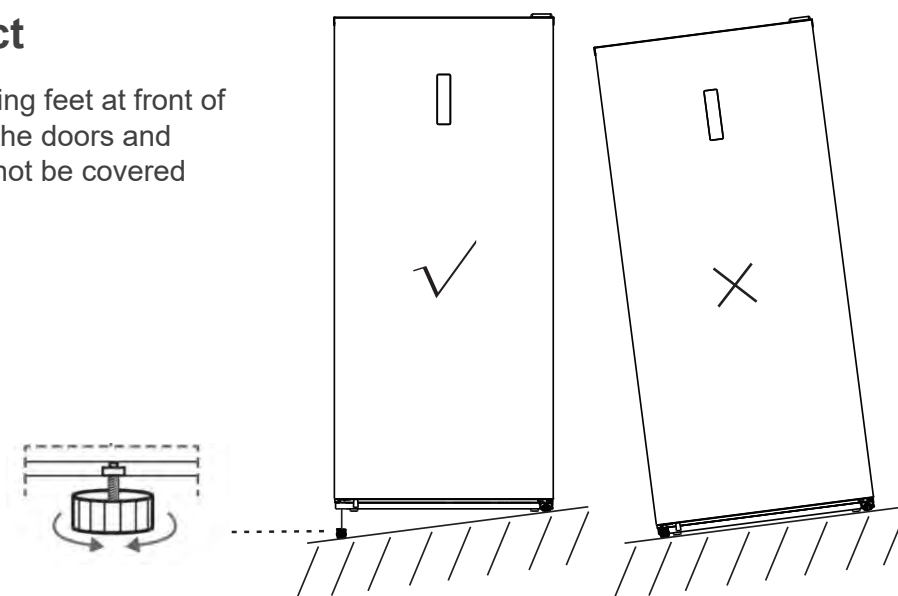
Installation

Installing your Unit

- Use two or more people to move and install the appliance. Failure to do so can result in back or other injury.
- Locate the refrigerator away from direct sunlight and sources of heat (stove, heater, radiator, etc.). Direct sunlight may affect the acrylic coating and heat sources may increase electrical consumption. Do not use where the room temperature is below -15°C , or in high heat/humidity locations.
- **This appliance is not designed or approved for outdoor use.**
- The appliance must be installed with all electrical and drain connections in accordance with state and local codes. A standard electrical supply (115 V AC only, 60 Hz), properly grounded in accordance with the National Electrical Code and local codes and ordinances is required.
- The fuse (or circuit breaker) size should be 15 amperes.
- It is important for the appliance to be leveled in order to work properly. You may need to make several adjustments to level it.
- Plug into a grounded 3-prong outlet, do not remove grounding prong, do not use an adapter, and do not use an extension cord.
- We recommend that your unit be on its own circuit. Please make sure to use a receptacle not controlled by a light switch
- Place your unit on a floor that is strong enough to support the unit when it is fully loaded. To level your unit, adjust the leveling legs at the bottom of the unit.
- **Allow 2 inches of space between the back and sides of the unit, which allows the proper air circulation to cool the compressor and condenser.**
- Avoid locating the unit in moist areas.
- Before connecting the unit to the power source, let it stand upright for approximately 4 hours. This will reduce the possibility of a malfunction in the cooling system from handling during transportation.

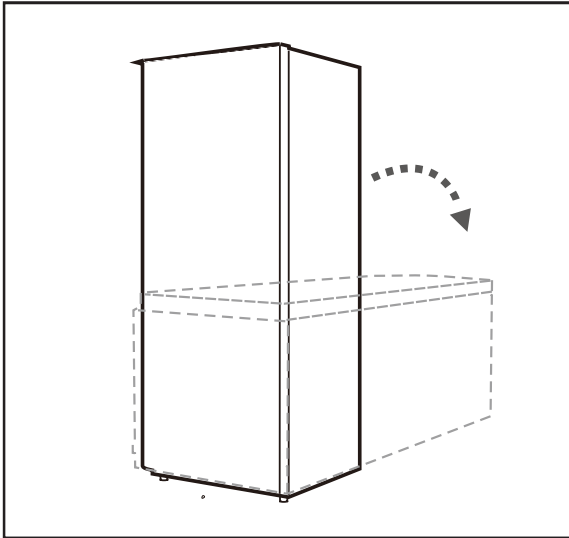
Leveling the product

To do this adjust the two levelling feet at front of the unit. If the unit is not level, the doors and magnetic seal alignments will not be covered properly

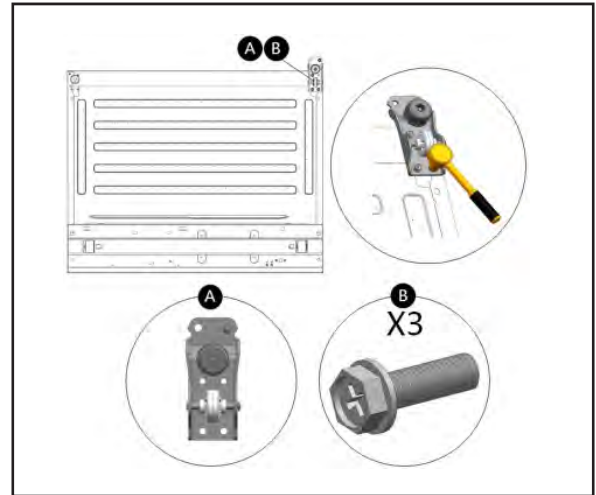


How to reverse the door hinges

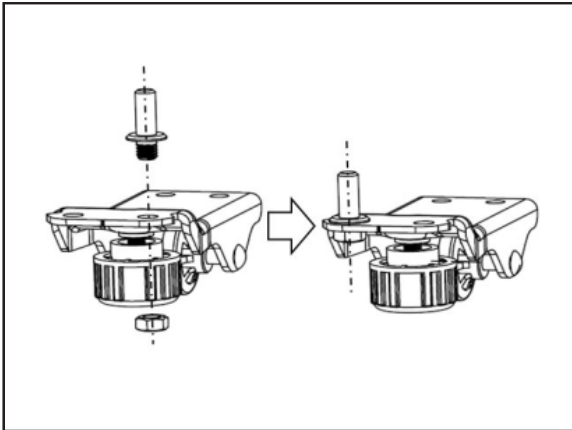
1. Unplug unit.
Lay the freezer on its back on a padded surface.



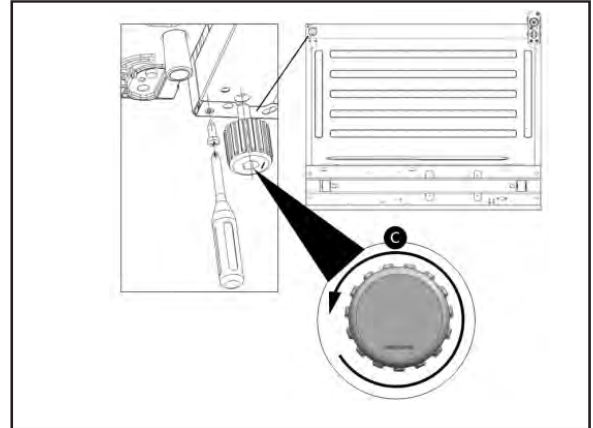
2. Remove the 3 screws (B) holding the bottom hinge (A) to the cabinet with an 8 mm socket with ratchet.



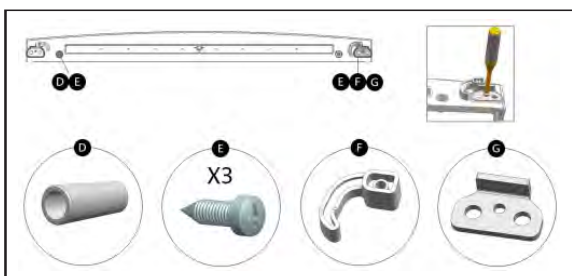
3. Unscrew and insert the hinge pin on the opposite side of the bottom hinge using an adjustable wrench and pliers.



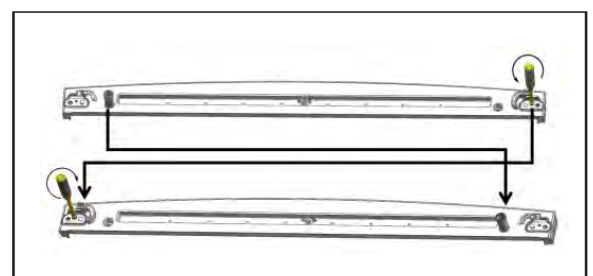
4. Unscrew the left adjustable leveling foot and loosen the screw.



5. Remove the aid-closer (F), metal block (G), and the supporter (D).



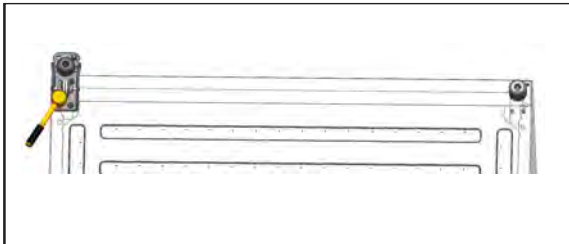
6. Reinstall the aid-closer (F), metal block (G) onto the left side, and the supporter (D) onto the right side.



How to reverse the door hinges

Important Note: When you screw on the bottom hinge: Move the door slightly to the left or right to make sure the hinge hole is aligned with the cabinet hole. Insert the 3 screws by half depth, and then align the hinge and fully tighten.

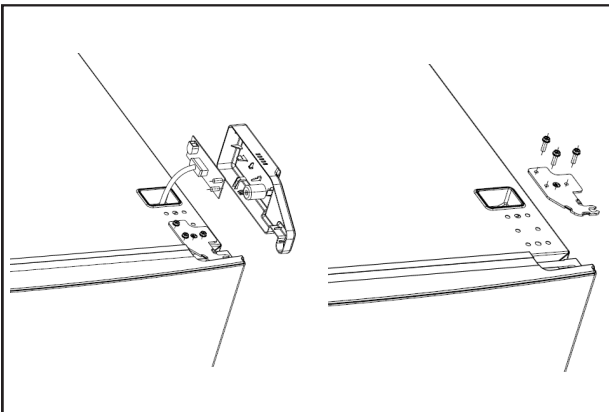
7. Attach the bottom hinge (A) with 3 screws (B) and the adjustable leveling foot (C) on the left side of the cabinet.



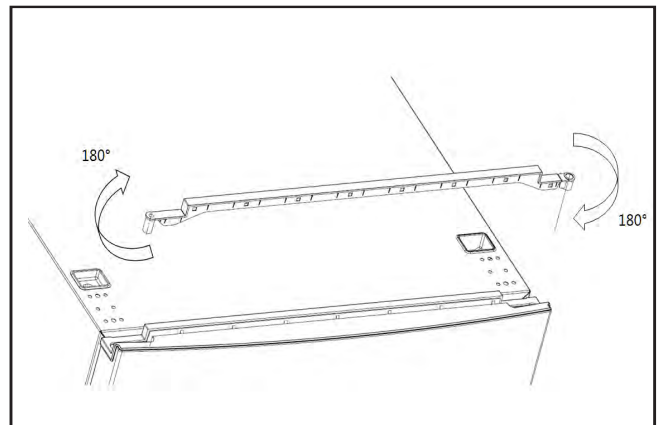
8a. Using an 8 mm socket with a ratchet: Unscrew right top hinge cover and left top decorative cover, and disconnect the door switch and display.



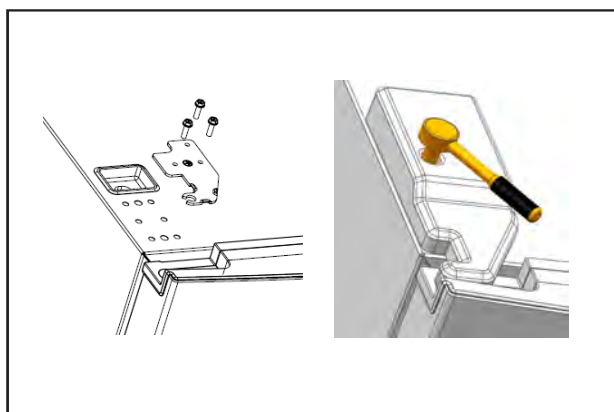
8b. Remove the top hinge from the right side.



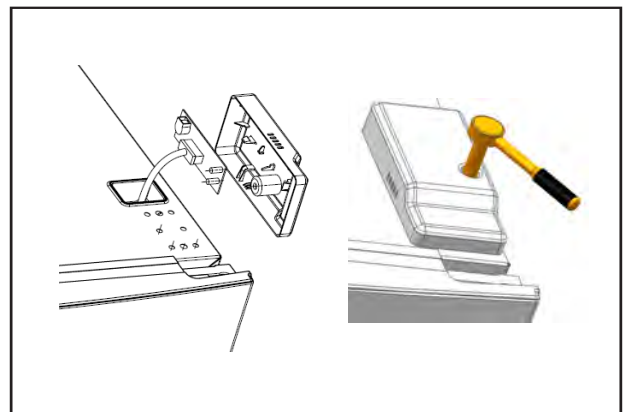
9. Remove the front top decorative doorcover, turn the cover (together with the connecting wire) 180° and install it.



10. Install the top left hinge (provided in the spare parts bag).

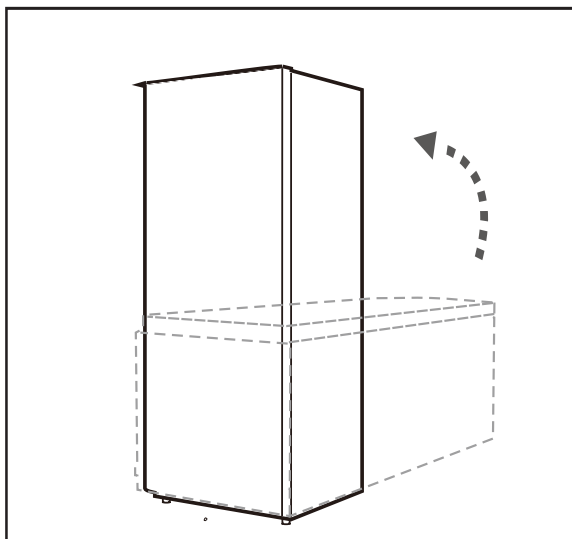


11. Install the PCB in the door hinge cover



How to reverse the door hinges

12. Raise the appliance to the upright position.
Open and close the door to check if door moves smoothly.

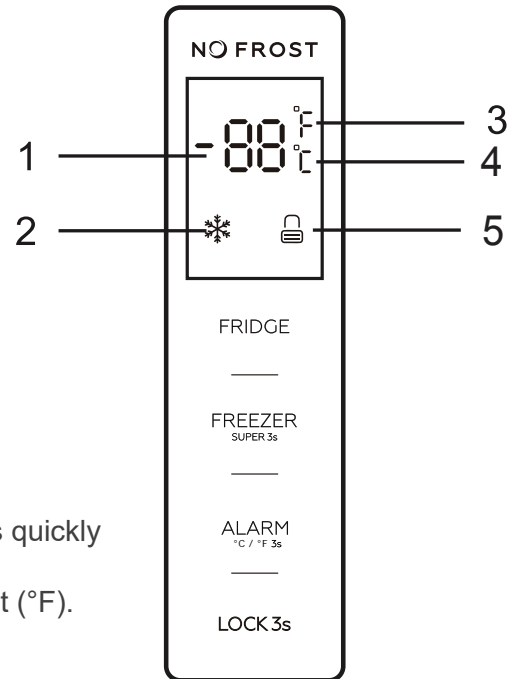


IMPORTANT Allow 2 hours before plugging the unit back into electrical outlet.

Using your Convertible Fridge/Freezer

LED DISPLAY

1. Display window for preset temperature
2. Super Freeze mode icon
3. Fahrenheit
4. Celsius
5. Display locked & unlocked icon



USER INTERFACE INTRODUCTION

Short beep after touching of buttons.

FRIDGE: Temperature control of the appliance

FREEZER/SUPER (hold for 3 seconds) to flash freeze contents quickly

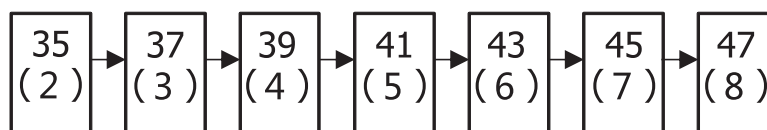
ALARM/°C to °F switch: Clear door opening alarm and high temperature alarm. Switch between Celsius (°C) and Fahrenheit (°F).

LOCK: Locking and unlocking.

Fridge Function

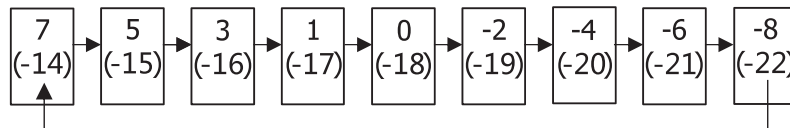
Press "FRIDGE" button repeatedly to select temperature settings ranging from 2 to 8 degrees celsius. Once you choose the desired temperature, it will flash for approximately 5 seconds then the temperature is set.

Refrigerator Temperature Settings



Freezer Function

Press “FREEZER” button repeatedly to select temperature settings ranging from -14°C (7°F) ~ -22°C (8°F). Once you choose the desired temperature, it will flash for approximately 5 seconds then the temperature is set.



Super Freeze Setting

Press “SUPER 3s” button to select super mode when the product is in FREEZER mode. After 5 seconds flashing of super mode icon, super mode is selected. When super mode is selected, super mode icon will light on and display window will show -25°C (-13°F). In super mode, touching “FREEZER” button, super mode icon will flash 3 times, but freezer temperature cannot be changed.

To exit Super mode,

- Press “SUPER” button to deselect Super mode.
- After 50 hours of "super" mode without any operation, the appliance will exit out of this mode and enter into the previous setting



WARNING In Super Freeze Mode, noise of the appliance may be slightly higher than normal running.

Other Function

Alarm

Stop the door ajar alarm and high temperature alarm by pressing "ALARM" button

High temperature alarm

If a high internal temperature of the appliance is detected, a high temperature alarm will sound. Code "ht" and the detected temperature will alternate on the display. Hit the "ALARM" button to stop the high temperature alarm. The high temperature code on the display will disappear automatically when the internal temperature goes back to normal.

Door opening alarm

If the door is open for 90 seconds, the ajar alarm will sound. Close the door to stop the alarm or press "ALARM"

°C to °F switch

Press and hold "ALARM" button for 3 seconds to switch the temperature units between Celsius (°C) and Fahrenheit (°F)

LOCK: Locking and Unlocking

Holding the "LOCK" button for 3 seconds will lock the control panel and the icon will appear as shown.



In locked status, if a button is touched the icon will flash 3 times. Holding the "LOCK" button for 3 seconds will unlock the control panel.



When the display is in the unlocked state, all buttons are available. If there is no operation for 25 seconds, the control panel will lock automatically.

Care and Maintenance

Cleaning Your Unit

- after defrosting, gently wash & wipe the interior with a mild detergent in warm water
- wash & Wipe the freezer basket and door railings with a mild detergent
- the outside of the unit should be cleaned with mild detergent and warm water.

Preparing for long-term storage

If your appliance is not going to be used for several months, turn it off, unplug it, remove all food, clean/dry it and leave the doors open to prevent unpleasant smells or mold

Power Failure

Most power failures are corrected within a few hours and should not affect the temperature of your unit if you minimize the number of times the door is opened. If the power is going to be off for a longer period of time, you need to take the proper steps to protect your food.

After the appliance has been turn off, unplugged or lost power, wait 3-5 minutes before turning the appliance back on. If you try to turn on before this time, the unit will not start.

Energy Saving Tips

- The unit should be located in the coolest area of the room, away from heat producing appliances or heating ducts, and out of the direct sunlight.
- Do not use outdoors or on wet surfaces. Use only as described in this manual.
- Use only manufacturer's recommended attachments.
- Let hot foods cool to room temperature before placing in the unit.
- Overloading the unit forces the compressor to run longer.
- Foods that freeze too slowly may lose quality, or spoil.
- Be sure to wrap foods properly, and wipe containers dry before placing them in the freezer. This cuts down on frost build-up.
- To prevent cold air from escaping, try to limit the number of times you open the door. Only open the door to put food in or take it out

Important Warning

- ⚠ Keep ventilation openings, in the appliance enclosure or in the built-in structure, clear of obstruction.
- ⚠ Do not use mechanical devices or other means to accelerate the defrosting process, other than those recommended by the manufacturer.
- ⚠ Do not change or damage the refrigerant circuit.
- ⚠ Do not store explosive substances such as aerosol cans with a flammable propellant in this appliance. During transportation and installation of the appliance, be certain that none of the components of the refrigerant circuit become damaged.
- ⚠ It is dangerous to alter the specifications or modify this product in any way. Any damage to the cord may cause a short circuit, fire and/or electric shock.
- ⚠ This appliance is intended to be used in residential household, office or light commercial applications such as Hotels and College Dorms.
- ⚠ All electrical components (plug, power cord, compressor and etc.) must be replaced by a certified service agent or qualified service personnel.
- ⚠ The refrigerant contained within the compressor of the appliance is isobutene (R600a) which is environmentally friendly but flammable.
- ⚠ Make sure that the power cord is not crushed or damaged at the back of the appliance. A crushed or damaged power cord may overheat and cause a fire.
- ⚠ Power cord must not be lengthened.
- ⚠ Make sure that you can come to the power cord of the appliance Do not pull the mains cable.
- ⚠ If the electrical outlet is loose, do not insert the power plug. There is a risk of electric shock or fire.
- ⚠ You must not operate the appliance without the lamp.
- ⚠ This appliance is heavy.. Care should be taken when moving it.
- ⚠ Do not remove nor touch items from the freezer compartment if your hands are damp/wet, as this could cause skin abrasions or frost/freezer burns.
- ⚠ Avoid prolonged exposure of the appliance to direct sunlight.

 Locate the refrigerator away from direct sunlight and sources of heat (stove, heater, radiator, etc.). Direct sunlight may affect the acrylic coating and heat sources may increase electrical consumption. Do not use where the room temperature is below -15°C, or in high heat/humidity locations. **This appliance is not designed or approved for outdoor use.**

**EFF212W**

1 Year Limited Warranty

When operated and maintained according to the instructions in the Use & Care Guide, EPIC a registered trademark of Stirling Marathon Limited agrees to repair or replace this product for 1 year from the date of original purchase and/or agrees to pay for parts and service/labour required to correct defects in materials or workmanship. Any Service must be approved and provided by an Authorized Stirling Marathon Service provider. YOUR EXCLUSIVE REMEDY UNDER THIS LIMITED WARRANTY SHALL BE PRODUCT REPAIR OR REPLACEMENT AT THE SOLE DISCRETION OF STIRLING MARATHON LIMITED AS PROVIDED HEREIN. This limited warranty is valid only in Canada and the Continental United States with proof of original purchase and confirmed warranty registration.

TERMS OF WARRANTY BY PRODUCT	Capacity/Type	Warranty Type
Refrigeration & Freezer	Less than 6 cu.ft	Carry-In
Refrigeration & Freezer	Greater than 6 cu.ft.	In-Home
Electric & Gas Ranges	All Sizes	In-Home

How to Obtain Service

Carry-In: The original purchaser must deliver or ship the defective product to an authorized Stirling Marathon Service present a copy of the original bill of sale or Warranty Registration Confirmation.

In-Home: Contact Authorized Service Center and provide a copy of the Original bill of sale or Warranty Registration Card. If you are in a remote area or the closest Authorized Service Center is further than 100 km (60 miles), you will be required to deliver the appliance to the closest Service Center at your expense.

Stirling Marathon is not responsible or liable for any spoilage or damage to food or other contents of this appliance, whether due to any defect of the appliance, or its use, whether proper or improper.

Items Excluded from Warranty

- Damages due to shipping or improper installation.
- Damages due to misuse or abuse.
- Content losses due to failure of the unit.
- Commercial or Rental Use Limited to 90 days Parts & Labour.
- Plastic parts such as door bins, panels, door shelves, racks, light bulbs, etc.
- Punctures to the evaporator system due to improper defrosting of the unit.
- Service or Repair by unauthorized service technicians.
- Service calls that do not involve defects in material and workmanship such as instruction on the proper use of the product, door reversal or improper installation.
- Replacement or resetting of house fuses or circuit breakers.
- Delivery costs incurred as the result of a unit that fails.
- Expenses for travel and transportation for product service if your appliance is located in a remote area where service by an unauthorized service technician is not available.
- The removal and reinstallation of your appliance if it is not installed correctly or is in an inaccessible location, as per the published installation instructions.
- Liability under this warranty is limited to repair, replacement or refund. If a replacement unit is not available or the unit cannot be repaired, liability is limited to the actual.
- Purchase price paid by the consumer.
- This warranty applies only to the original purchaser and does not extend to any subsequent owner(s) and is non-transferable.
- No warranty or insurance herein contained or set out shall apply when damage or repair is caused by any of the following: accident, alteration, abuse or misuse of the appliance such as inadequate air circulation in the room or abnormal operating conditions (extremely high or low room temperature).
- Use for commercial or industrial purposes (i.e. If the appliance is not installed in a domestic residence). Fire, water damage, theft, war, riot, hostility, acts of God such as hurricanes, floods etc.
- Service calls resulting in customer education.
- Improper installation (ie. Building-in of a free-standing appliance or using an appliance outdoors that is not approved for outdoor application).

For Service or Assistance please contact us at:
warranty@stirlingmarathon.com or visit us at **www.stirlingmarathon.com**.