

Description

The SmartEnergy 250A Energy Management Current Transformers easily clip onto the electrical wiring to send current information to a connected SEM-1024-00 SmartEnergy Monitor. Their split core design provides non-contact current measurements without having to disconnect the primary wire.

Applications

When connected to the SEM-1024 SmartEnergy Monitor these transformers measure AC current moving through their magnetic field. This data is sent to SEM-1024 and displayed on UIs throughout the system.



Feature Summary

- Split core design offers easier installation, portable.
- Suitable for harsh operating environments.
- Gather and store real-time and historical data for incoming feeds when connected to the SEM-1024 SmartEnergy Monitor.

Included Items

Description	Quantity
SEM-250A1-00 Transformers	1

Required System Components

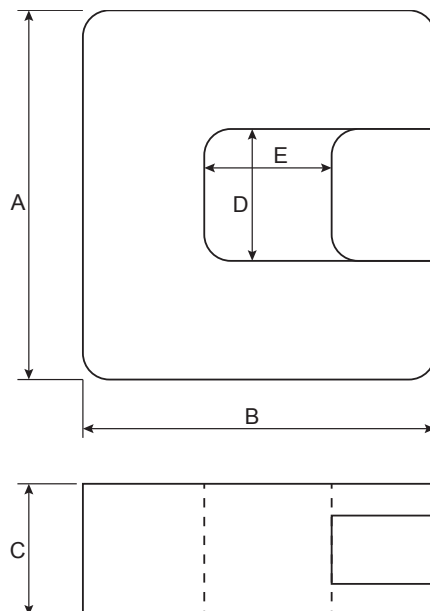
The following components are required to use SmartEnergy Energy Management Current Transformers.

Description	Model Number
Host Controller	HST-xxxx or SVR-xxxx
SmartEnergy Monitor Chassis	SEM-1024-00
Ethernet Network	Enterprise-grade network deployment

Specifications

Environmental	
Rated Primary Input:	250A
Secondary Output:	0.333 VAC at rated current.
Accuracy:	±1% from 10% to 130% of rated current.
Phase Angle:	less than 2 degrees at 50% of rated current.
Operating Temperature:	15°C to +60°C
Secondary Burden Impedance:	≥ 100K Ω
Lead Wire:	8 Foot (2.4m) leads, AWM 1015, 0.34mm ² (22AWG), 600V, WHITE/BLACK

Dimensions



Part Number	A	B	C	D	E
SEM-250A1-00	2in (50.8mm)	2.1in (53.3mm)	.67in (17mm)	.75in (19.1mm)	.75in (19.1mm)

Design Considerations

For details on the use of the SEM-250A1-00 current transformer within a system, refer to the following documents located on the Savant Portal: dealers.savantsystems.com

- 009-0521-xx SEM-1024 Tech Spec
- 009-0358-xx SmartEnergy Monitor (SEM-1024) Quick Reference Guide

Other Models Available

The SmartEnergy current transformers are also available with the following amperage values:

Model Number	Description
SEM-020A5-00	SmartEnergy 20A Sensor (5 Pack)
SEM-050A5-00	SmartEnergy 50A Sensor (5 Pack)
SEM-150A1-00	SmartEnergy 150A Sensor (1 Pack)
SEM-150A5-00	SmartEnergy 150A Sensor (5 Pack)
SEM-400A1-00	SmartEnergy 400A Sensor (1 Pack)
SEM-600A1-00	SmartEnergy 600A Sensor (1 Pack)