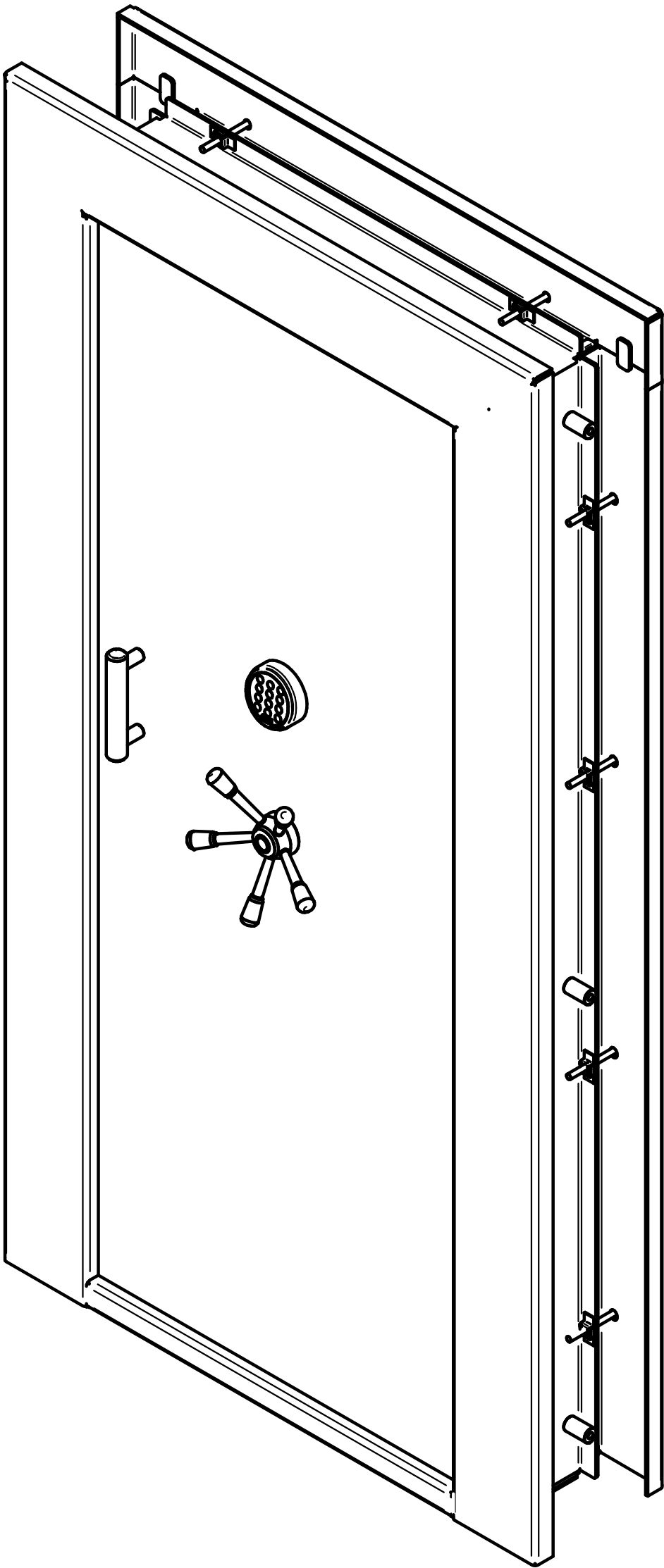


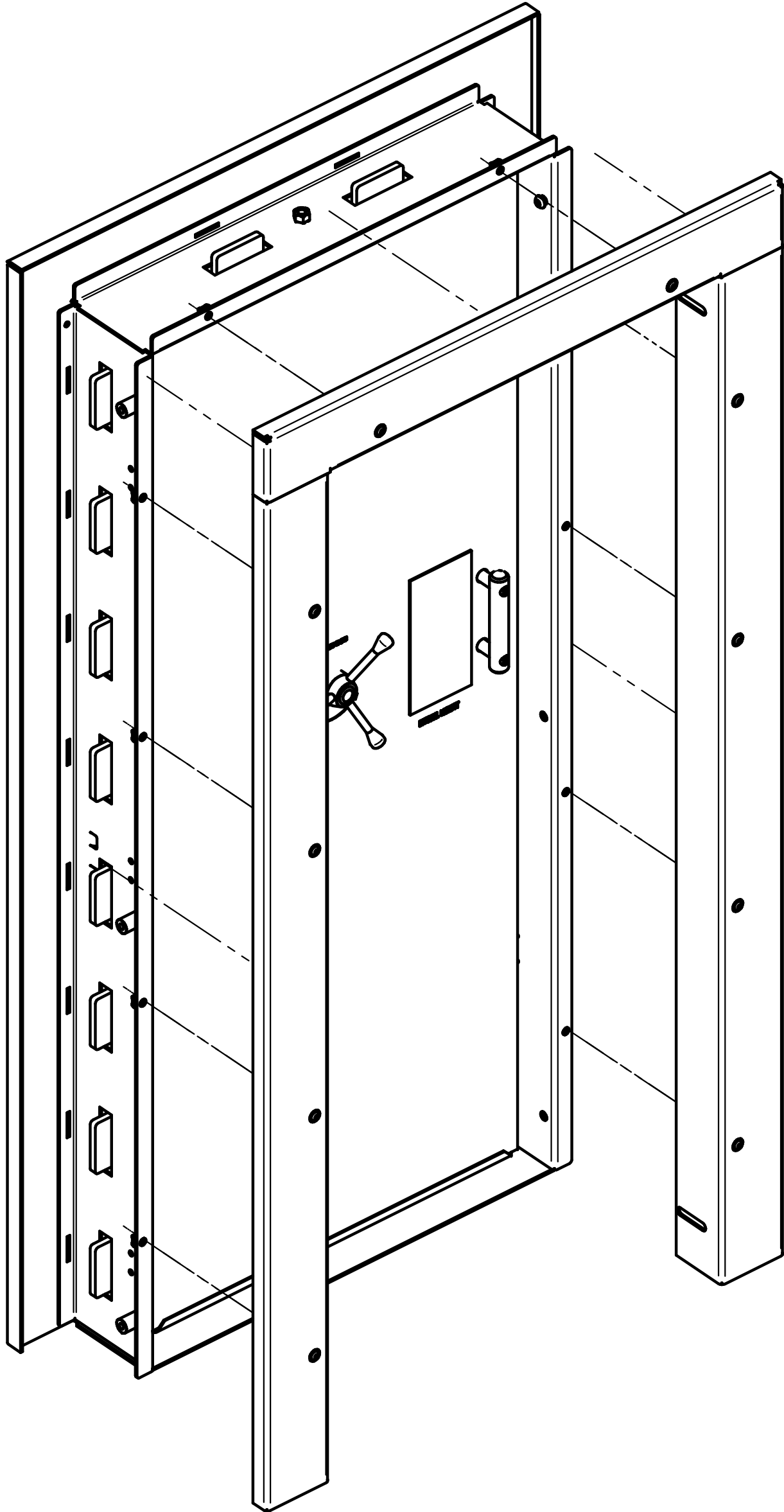
"THE BEAST" DELUXE INSWING Vault Door by Liberty Safe

Shown: Right Hand Inswing



Front

4 Piece Clamshell Design



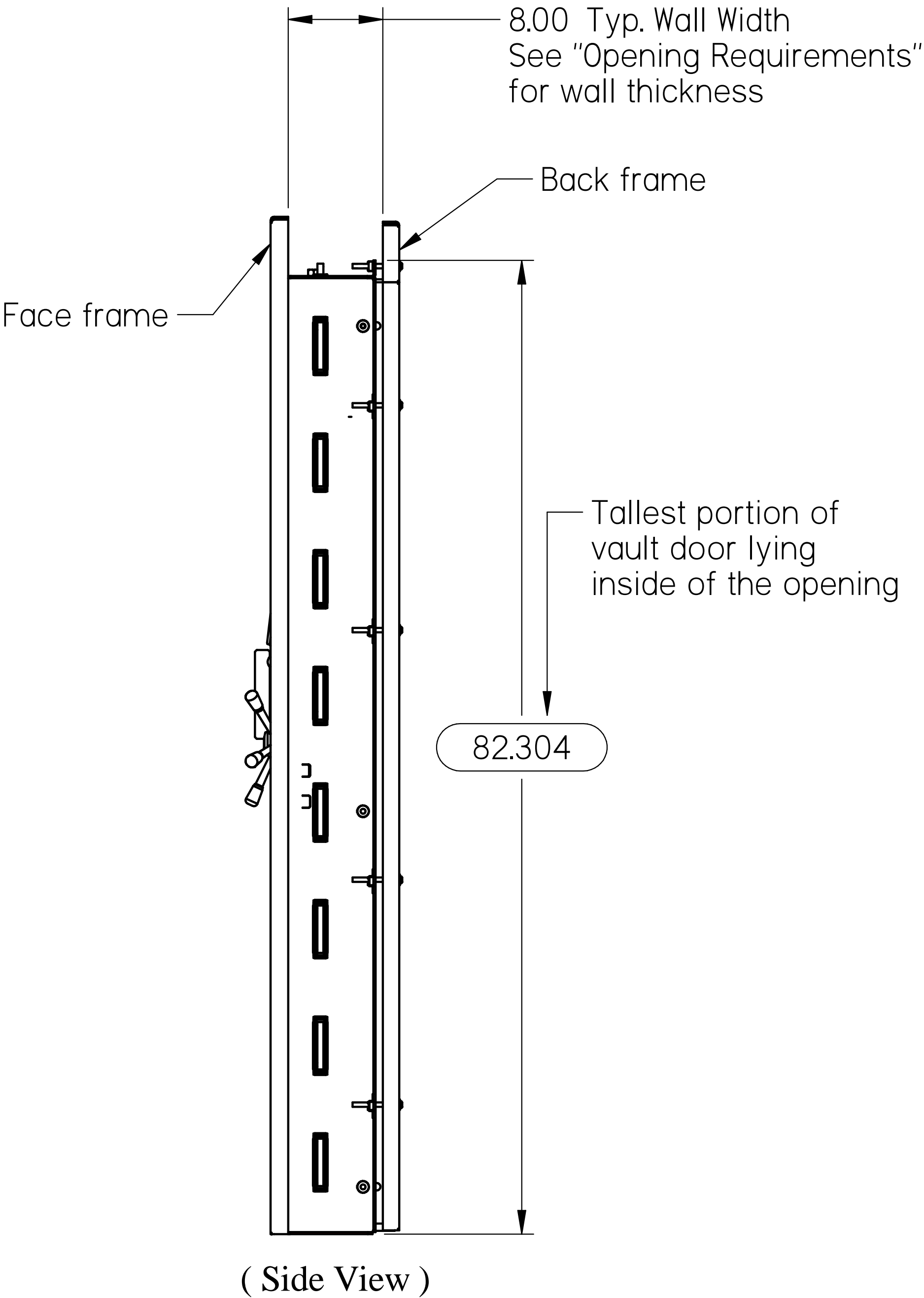
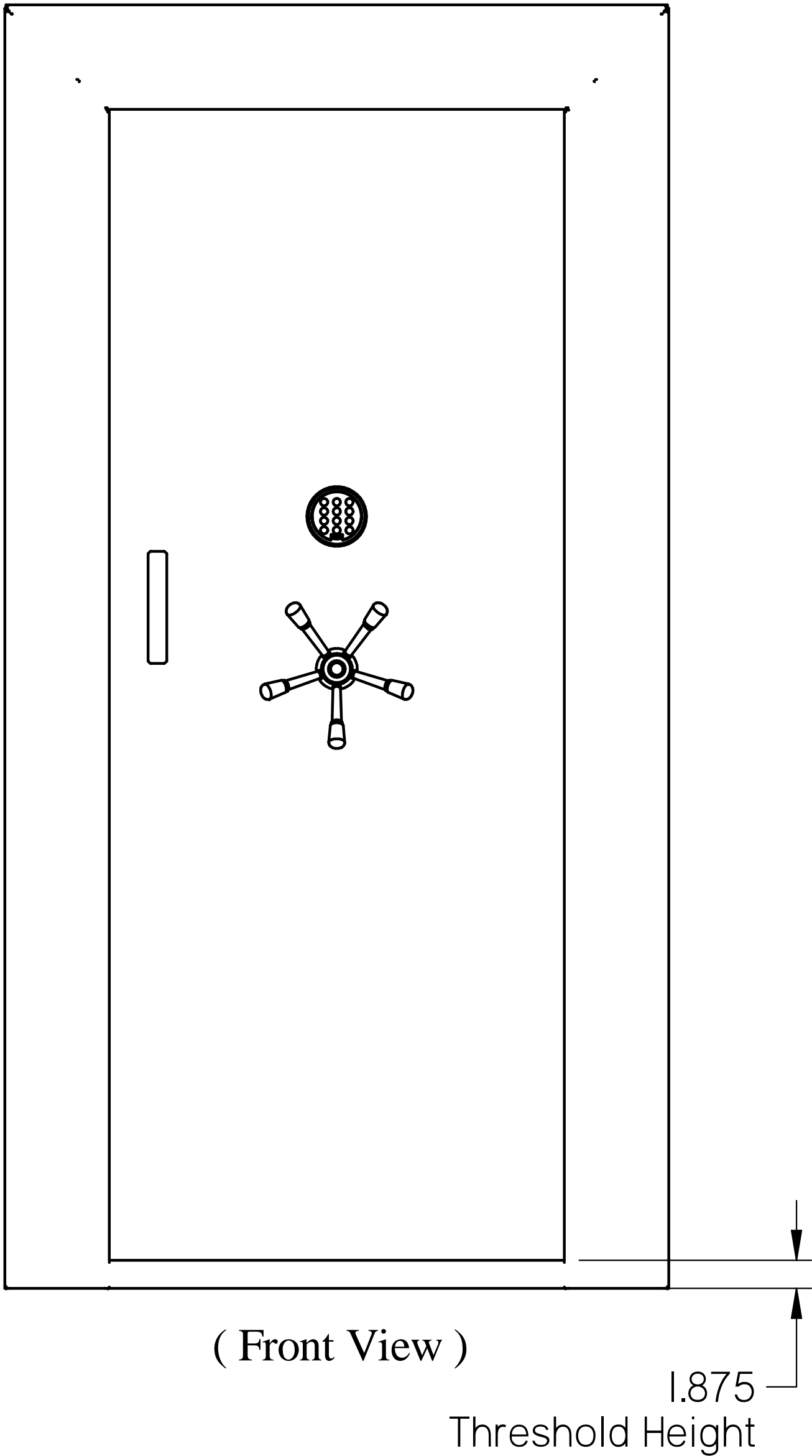
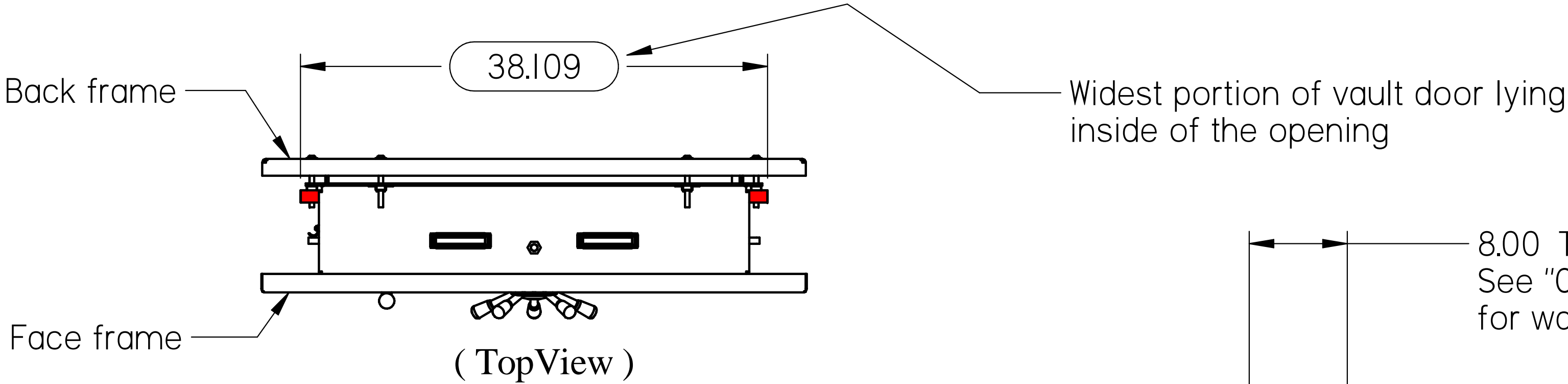
Back



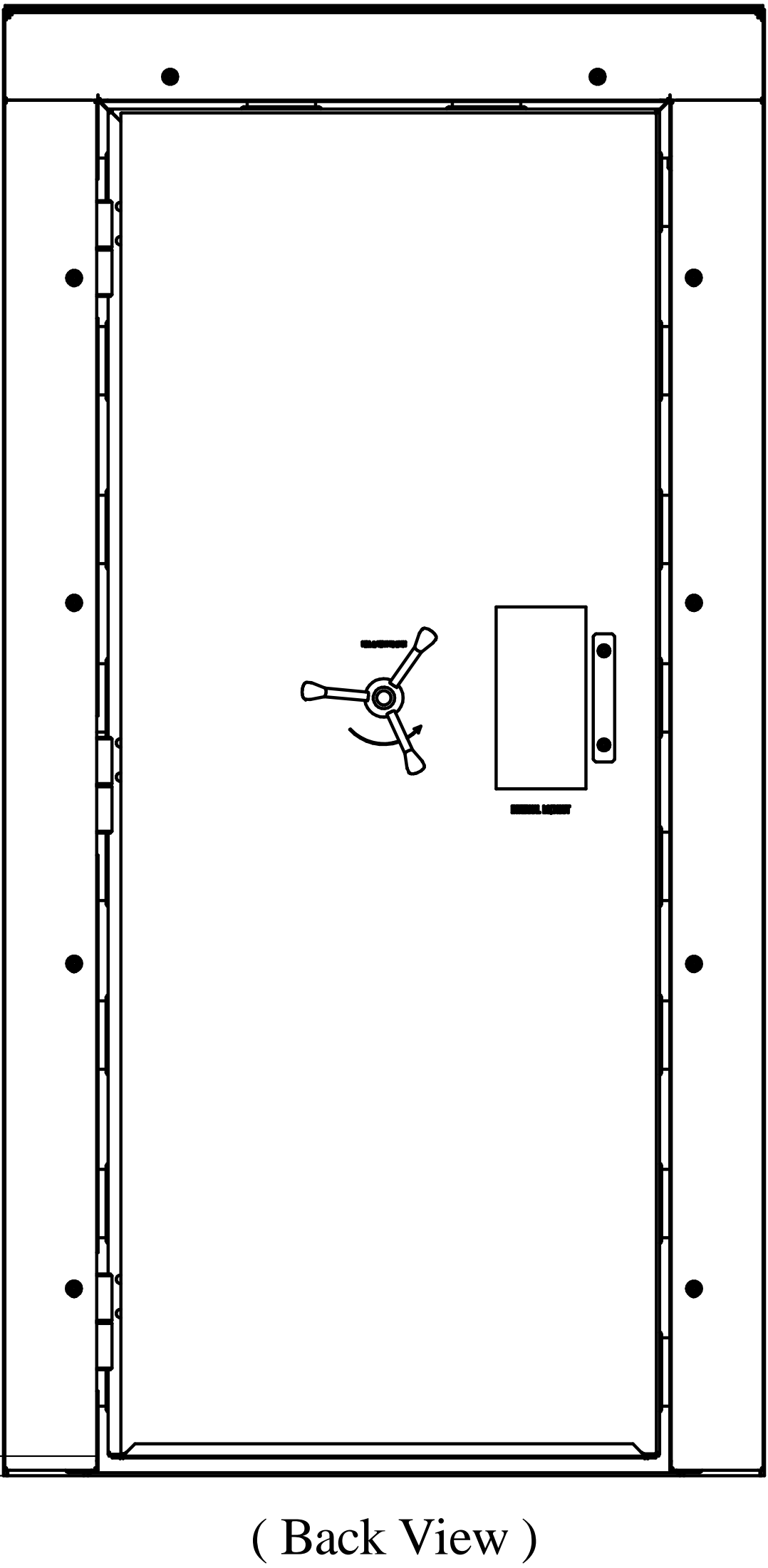
All information contained on this document is the sole property of Liberty Safe & Security.  Any alteration or reproduction by any method is strictly forbidden without written authorization from Liberty Safe & Security, Inc.		NAME	DATE	LIBERTY SAFE & SECURITY PRODUCTS			
	DRAWN	ryand	11/29/22				
	CHECKED			TITLE  DELUXE INSWING			
	ENG APPR						
	MGR APPR						
UNLESS OTHERWISE SPECIFIED DIMENSIONS ARE IN INCHES ANGLES ±1.0° 3 PL ±0.075				SIZE D	Rev_2022-11-29		
				FILE NAME: VDIN-XXX-18F_Specs_2022-11-29.dft			
				SCALE: 1:8		WEIGHT:	SHEET 1 OF 5

Clearances

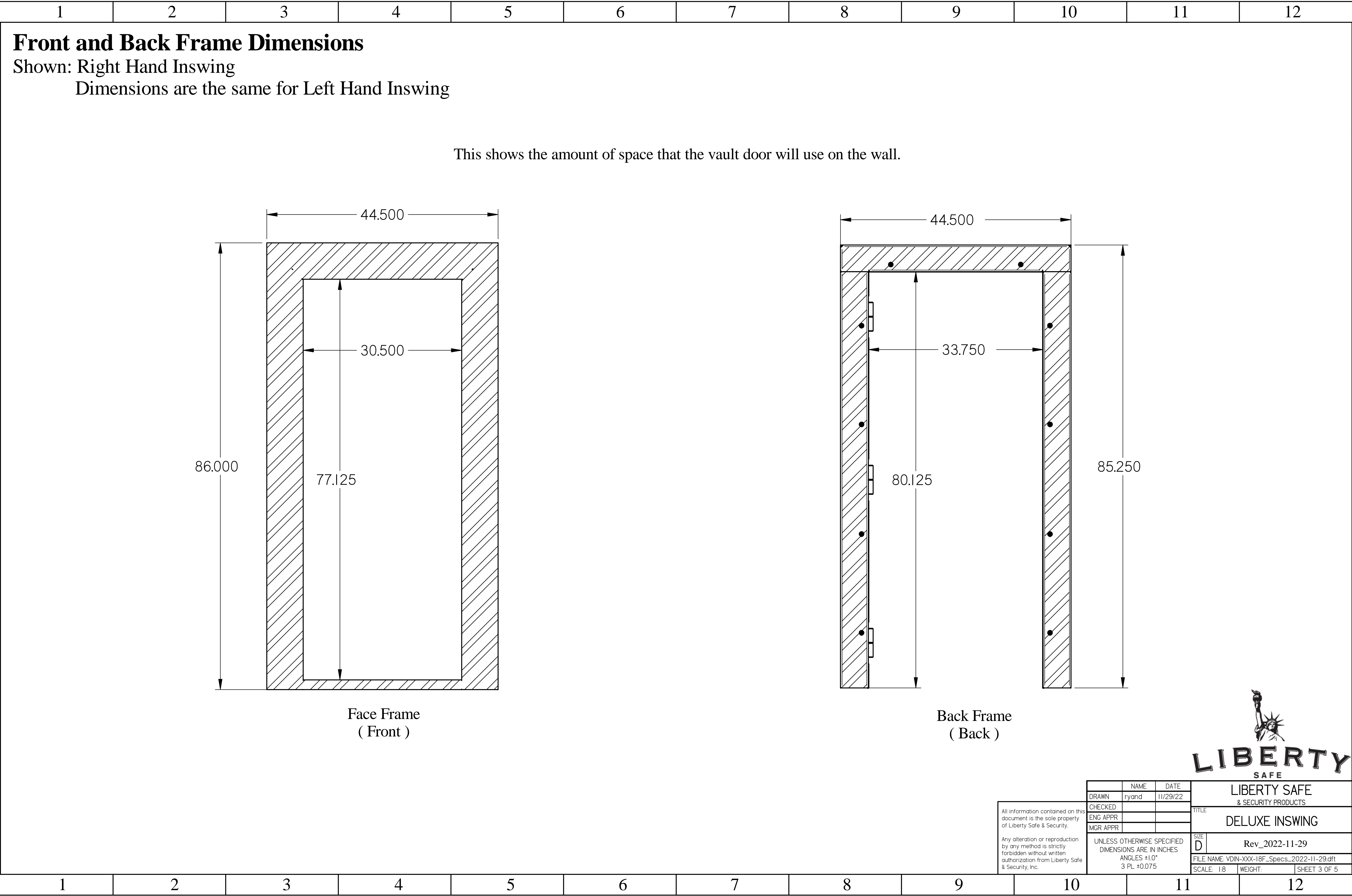
Shown: Right Hand Inswing  
Clearances are the same for Left Hand Inswing

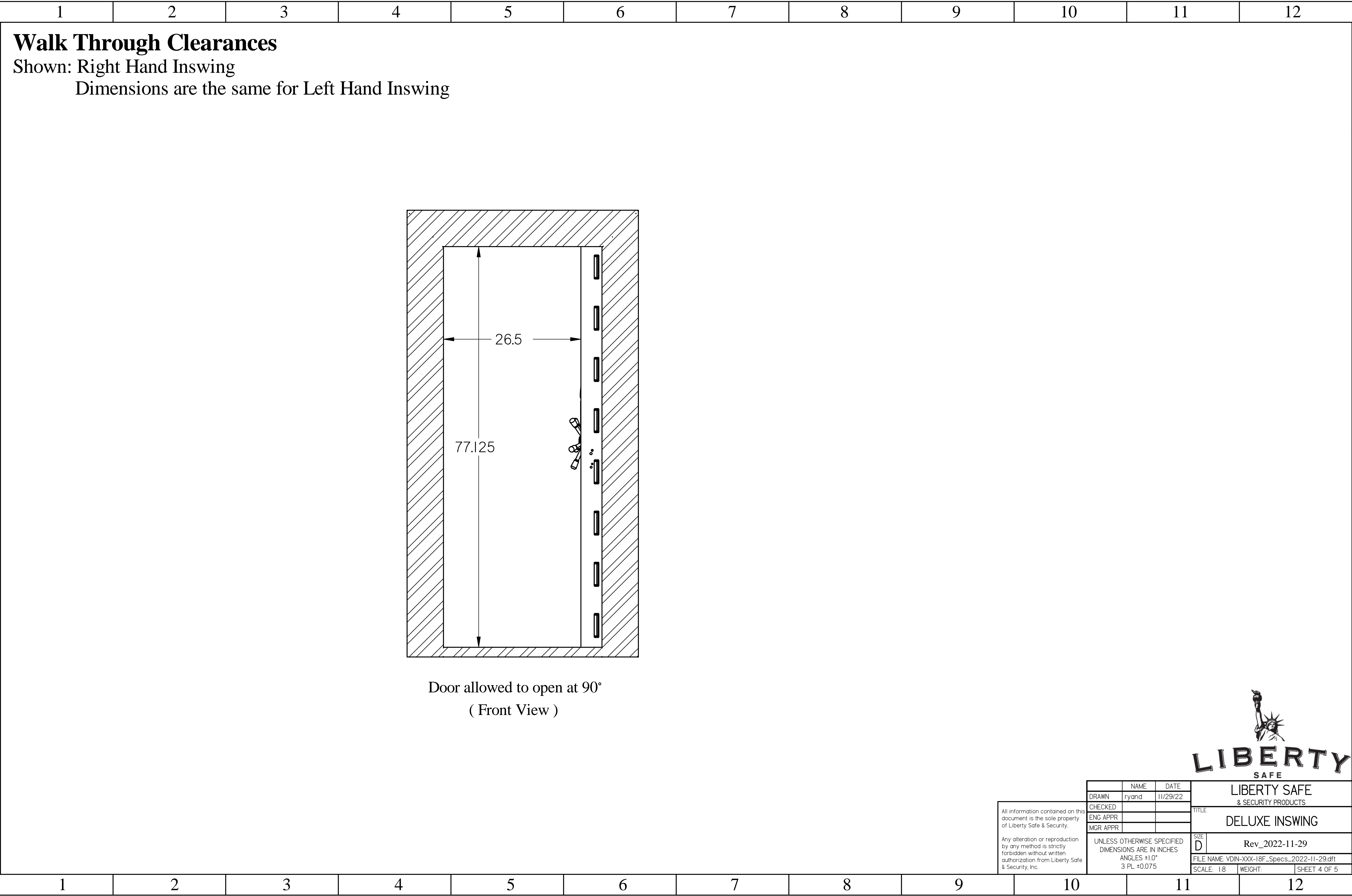


1.150  
Door to Floor Clearance



All information contained on this document is the sole property of Liberty Safe & Security.	DRAWN	NAME ryand	DATE 11/29/22	LIBERTY SAFE & SECURITY PRODUCTS		
	CHECKED			TITLE		
	ENG APPR			DELUXE INSWING		
	MGR APPR			Rev_2022-11-29		
Any alteration or reproduction by any method is strictly forbidden without written authorization from Liberty Safe & Security, Inc.	UNLESS OTHERWISE SPECIFIED DIMENSIONS ARE IN INCHES ANGLES ±1.0° 3 PL ±0.075			SIZE D	FILE NAME: VDIN-XXX-18F_Specs_2022-11-29.dft	
				SCALE: 1:8	WEIGHT:	SHEET 2 OF 5





Door allowed to open at 90°  
( Front View )



All information contained on this document is the sole property of Liberty Safe & Security.  Any alteration or reproduction by any method is strictly forbidden without written authorization from Liberty Safe & Security, Inc.		NAME	DATE	LIBERTY SAFE & SECURITY PRODUCTS		
	DRAWN	ryand	11/29/22			
	CHECKED			TITLE  DELUXE INSWING		
	ENG APPR					
	MGR APPR			SIZE D  Rev_2022-11-29		
UNLESS OTHERWISE SPECIFIED DIMENSIONS ARE IN INCHES ANGLES ±1.0° 3 PL ±0.075						
FILE NAME: VDIN-XXX-18F_Specs_2022-11-29.dft						
SCALE: 1:8		WEIGHT:		SHEET 4 OF 5		

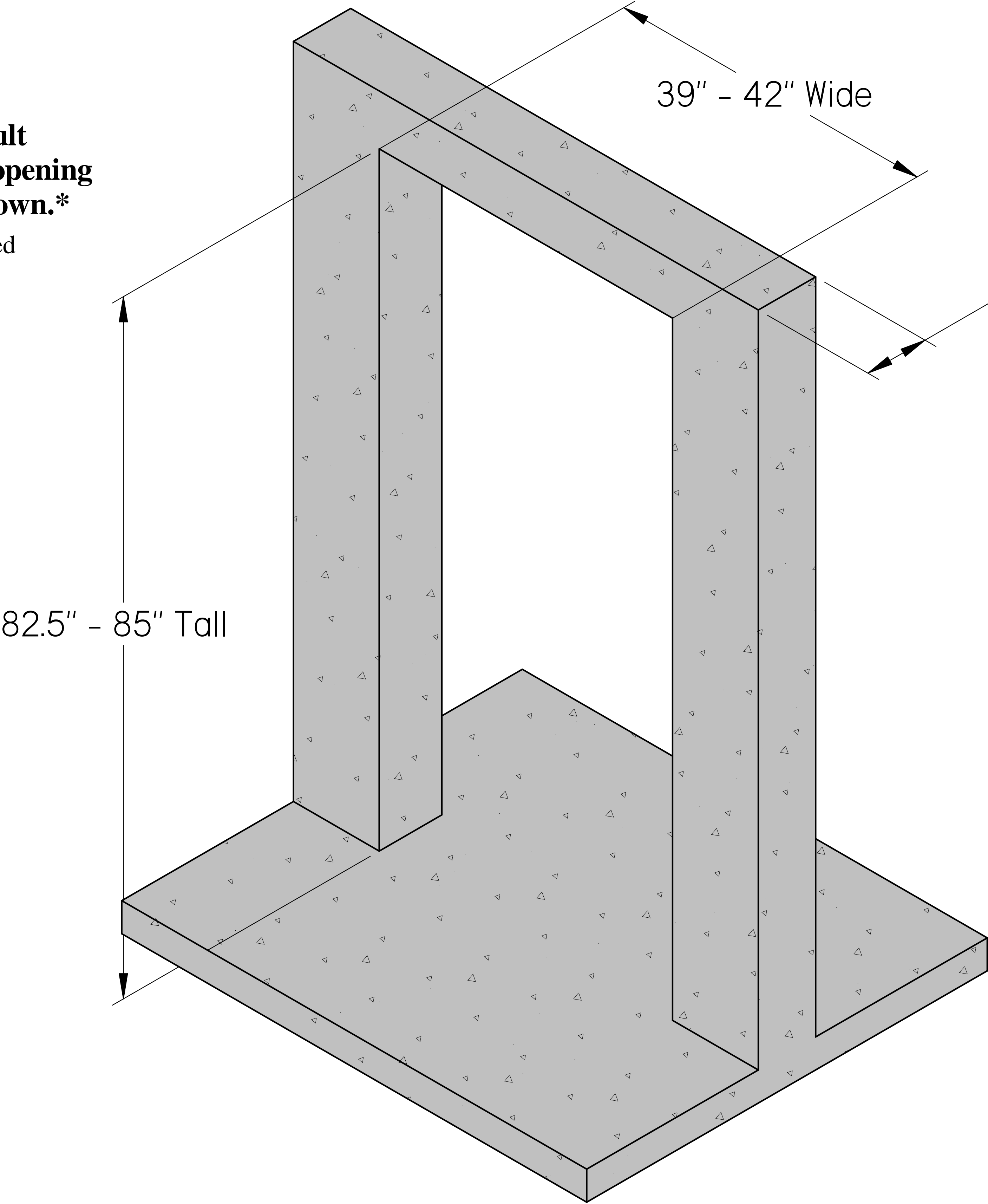


Opening Requirements

Shown: Rough opening requirements for the STANDARD DELUXE INSWING

The DELUXE INSWING vault door will accommodate any opening that is between the values shown.\*

\*These values may vary slightly based on the squareness of the opening.



7"- 9" Wall Thickness\*\*

\*\*Special orders can be made for 10", 12" or 14" wall thicknesses.

Ordering Guide	
How thick is your wall?	What to order
7-9"	8" - Standard
9-11"	10"
11-13"	12"
13-15"	14"
> 16"	N / A



All information contained on this document is the sole property of Liberty Safe & Security.  Any alteration or reproduction by any method is strictly forbidden without written authorization from Liberty Safe & Security, Inc.		NAME	DATE	LIBERTY SAFE & SECURITY PRODUCTS		
	DRAWN	ryand	11/29/22			
	CHECKED			TITLE  DELUXE INSWING		
	ENG APPR					
	MGR APPR					
	UNLESS OTHERWISE SPECIFIED DIMENSIONS ARE IN INCHES ANGLES ±1.0° 3 PL ±0.075			SIZE D	Rev_2022-11-29	
				FILE NAME: VDIN-XXX-18F_Specs_2022-11-29.dft		
				SCALE: 1:10		WEIGHT: