

## GARDENELLA SLING STACKING ARM CHAIR

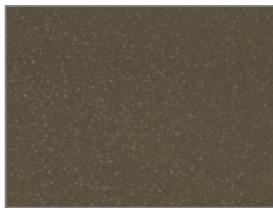


### Specifications

|                          |                  |
|--------------------------|------------------|
| <b>Item Number</b>       | 767J262          |
| <b>Frame Type</b>        | Tubular Aluminum |
| <b>Retail Warranty</b>   | 15 years         |
| <b>Contract Warranty</b> | 3 years          |
| <b>Overall Width</b>     | 24 in            |
| <b>Overall Height</b>    | 34 in            |
| <b>Overall Depth</b>     | 28.5 in          |
| <b>Seat Height</b>       | 17 in            |
| <b>Arm Height</b>        | 24 in            |
| <b>Packaged Weight</b>   | 10.25 lbs        |
| <b>Product Weight</b>    | 7 lbs            |
| <b>Carton Cube</b>       | 22.7 ft3         |
| <b>UPS-able</b>          | No               |
| <b>Assembly Required</b> | No               |
| <b>Pack Count</b>        | 4                |



Abalone



Beachwood PC