

RBM24F4FXNV

REFRIGERATOR 24" FREESTANDING BOTTOM MOUNT
STAINLESS STEEL FINISH



Energy star rated refrigerator & freezer with 11.4 cu.ft capacity, powered by variable-speed compressor and single evaporator.

Automated defrosting of evaporator ensures food stays always fresh.

Fresco drawer with separate temperature control (27 to 37 °F) and adjustable humidity for optimal storage of meat, cold cuts, shellfish, fish and dairy products.

Three shelves, a metal bottle rack and three door bins ensure food is neatly stored and well-preserved. The freezer compartment features three standard-size drawers, making it easy to retrieve frozen items.

Digital LED touch interface with user-friendly controls for temperature, speed-cooling, speed-freezing, vacation mode and eco mode.

Reversible doors for left or right swing configuration.

Choose Professional or Master Series handle kit to match your other Bertazzoni kitchen appliances.

2 years parts & labor warranty.

PRODUCT FEATURES

Size	W 23 7/16"
Volume	Ref 7.9 cu.ft / Frz 3.5 cu.ft
Door finish	No fingerprint stainless steel
User interface	Internal digital LED touch interface
Lighting	LED on the top
Refrigerator shelves	2 fixed and 1 height-adjustable
Refrigerator drawers	1 + 1 fresco drawer with separate temperature and humidity control
Freezer compartment	3 drawers
Door storage	1 stationary + 2 height-adjustable
Settings	Super cool, Super freeze, Eco mode, Vacation mode, Sabbath mode

TECHNICAL SPECIFICATIONS

Electrical supply	115 V 60 HZ - 175 W - 0.8 Amp
Power connection	NEMA 5-15P with 83''' power cord
Sound rating	39 dbA
Energy consumption	396.0 kwh/yr
Certification	CEC,ETL
Warranty	2 years parts & labor
Packaging dimensions	W 26 3/8" H 75 9/16" D 28 3/4"
Weight	167.0 lbs

ACCESSORIES

PROHK24BM	Handle kit for 24" & 31" bottom mount refrigerator - Professional Series
MASHK24BM	Handle kit for 24" & 31" bottom mount refrigerator - Master Series



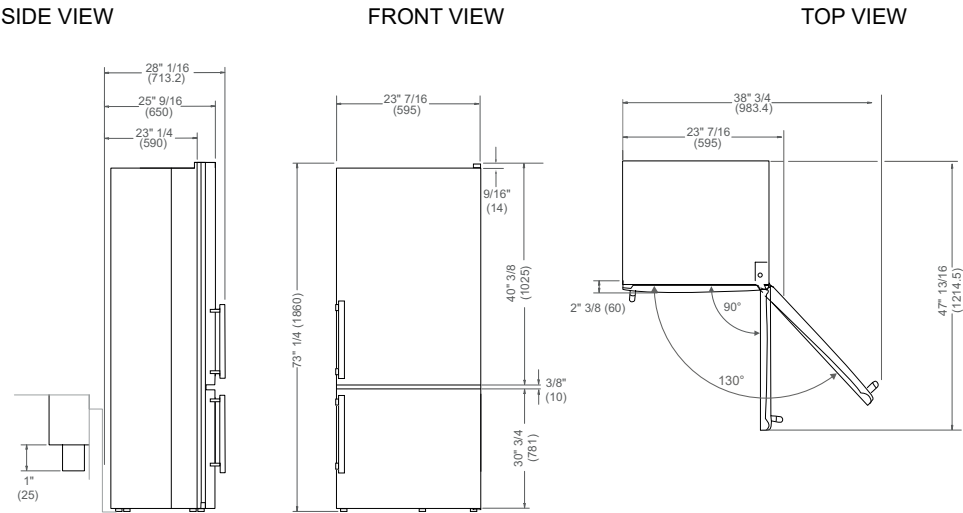
RBM24F4FXNV

REFRIGERATOR 24" FREESTANDING BOTTOM MOUNT

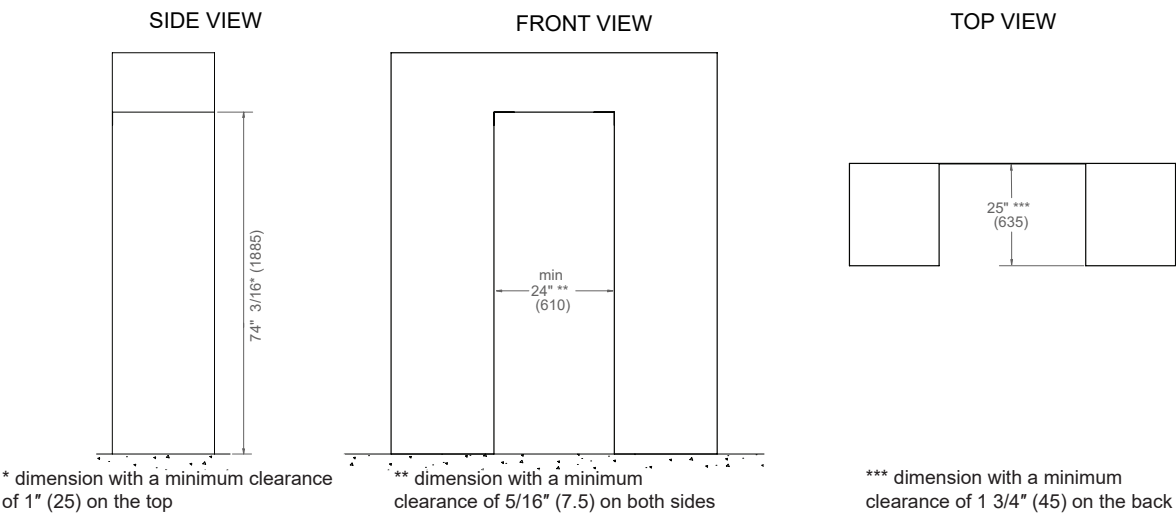
STAINLESS STEEL FINISH



PRODUCT DIMENSIONS



CUTOUT DIMENSIONS (Counter-depth Installation)

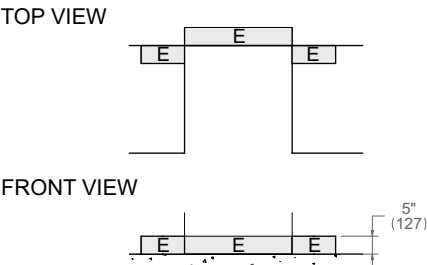


ELECTRICAL CONNECTION

E

A properly-grounded, horizontally-mounted electrical receptacle should be installed according to this drawing.

Connection(s) placement within the opening may require additional cabinet depth.



Dimensions in parentheses are millimeters unless otherwise specified.