

Grill Set-Up

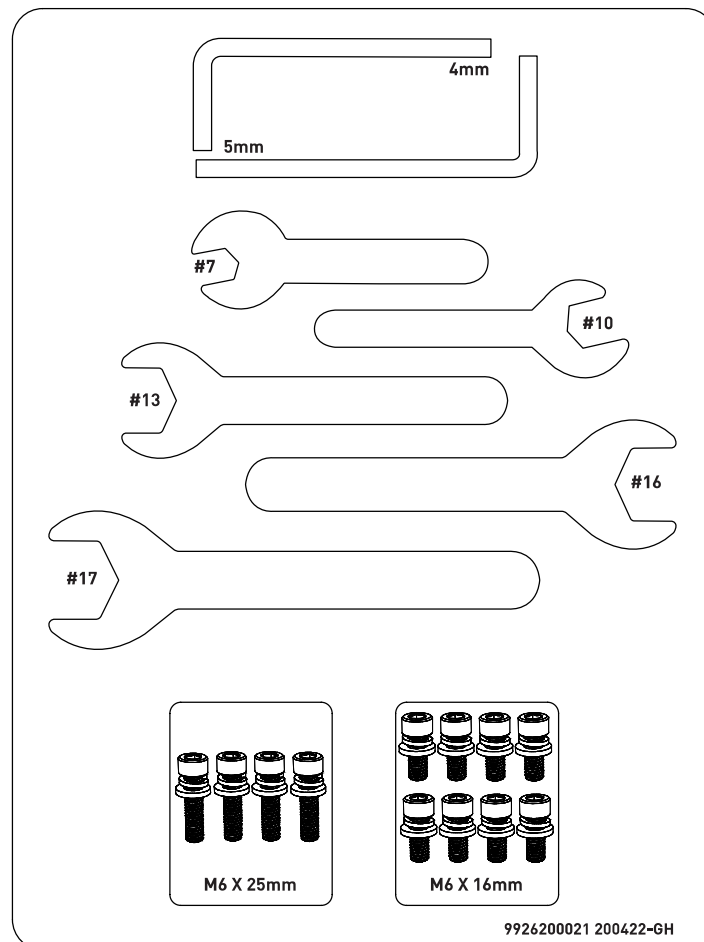
PELLET JOE GRILL

- 1 Due to the weight of this grill, we highly recommend two people lift the grill. Do NOT lift the grill by the side shelf tabs. Use the rear hinge and front hopper opening as lifting points.
- 2 Remove the plastic wrapping from the base of the grill cart.
- 3 Assemble the grill cart and lock the casters on the grill cart.
- 4 With the same lifting technique used previously, lift the grill into the cart. Adjust the grill in the cart so the pellet hopper is facing the front of the cart. The front side of the cart is the side with the two locking casters.

UNBOXING YOUR GRILL

1. Assemble the grill cart and lock the front casters on the grill cart. See assembly steps 1 - 3.
2. Due to the weight of this grill, it is recommended two people lift the grill. Use the rear hinge and front hopper opening as lifting points. Pull out the pellet load chute and use the hopper opening.
3. Place the grill in the cart so the pellet hopper is facing the front. The front side of the cart is the side with the two locking casters.

Hardware



1

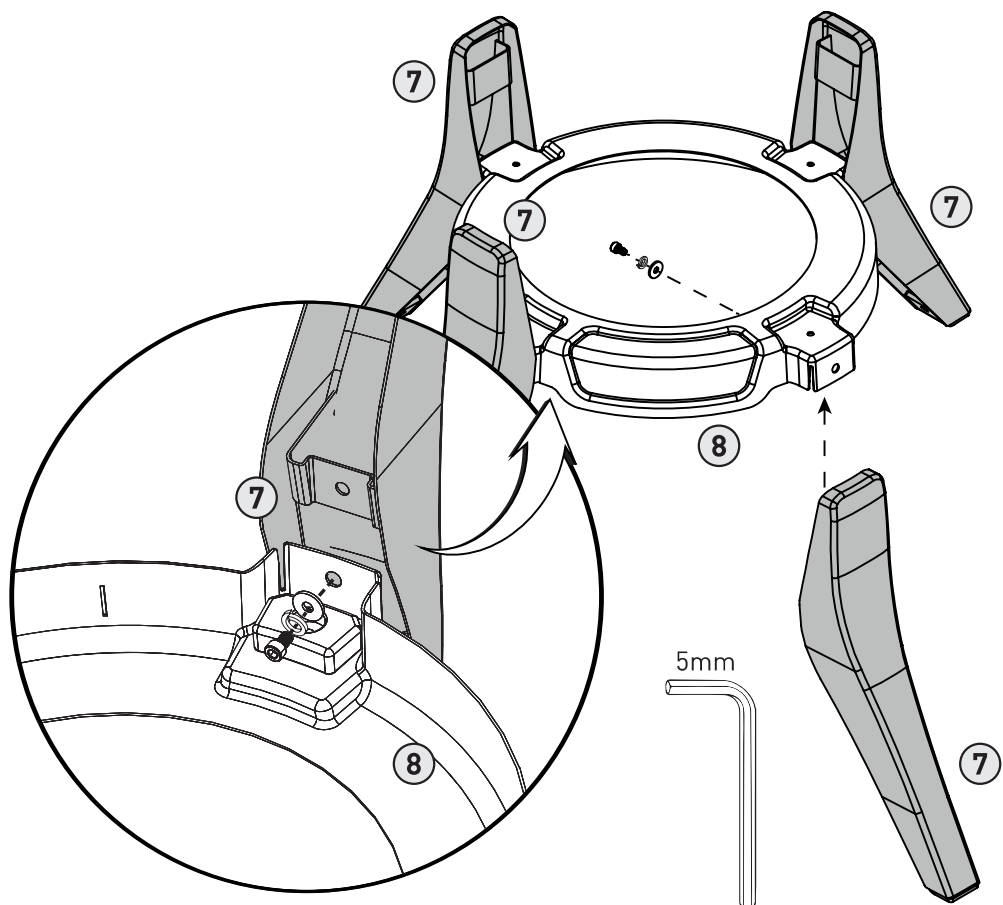
M6X16
X4



M6
X4

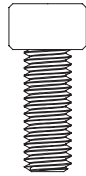


M6
X4



2

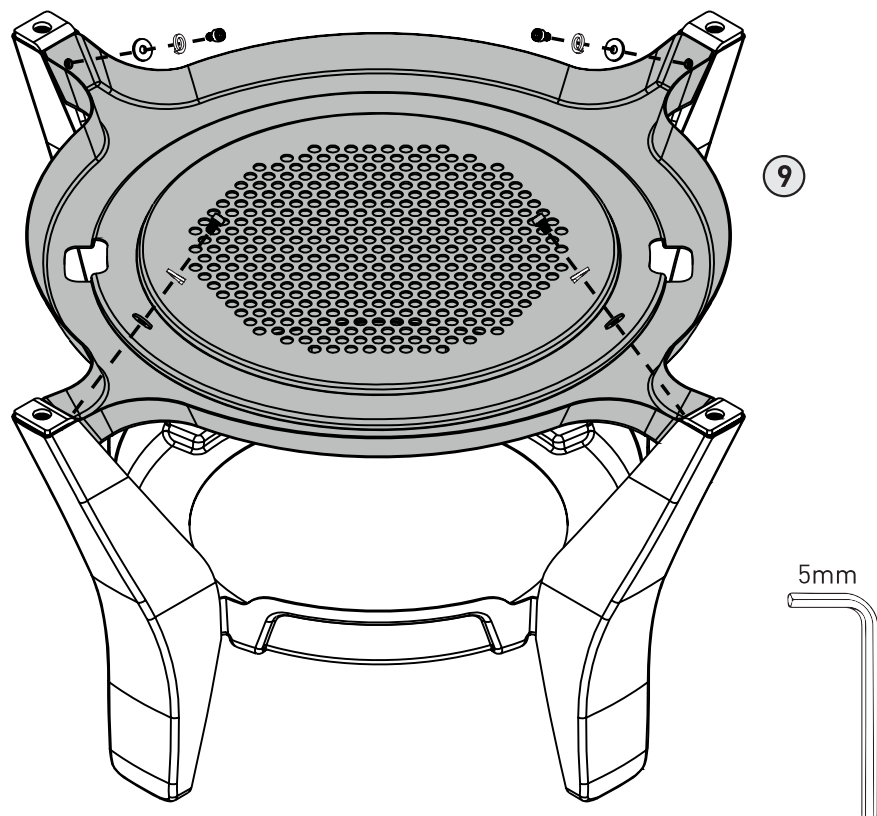
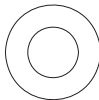
M6X16
X4

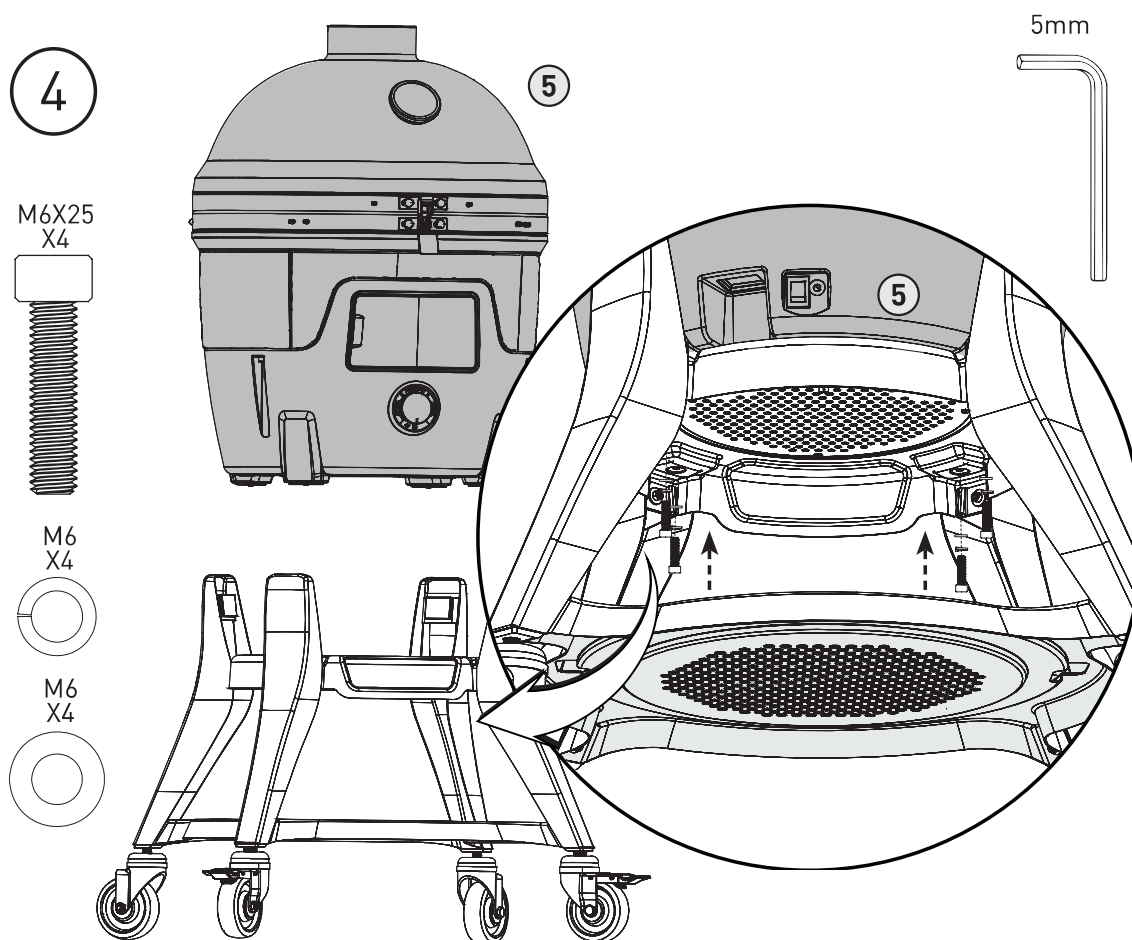
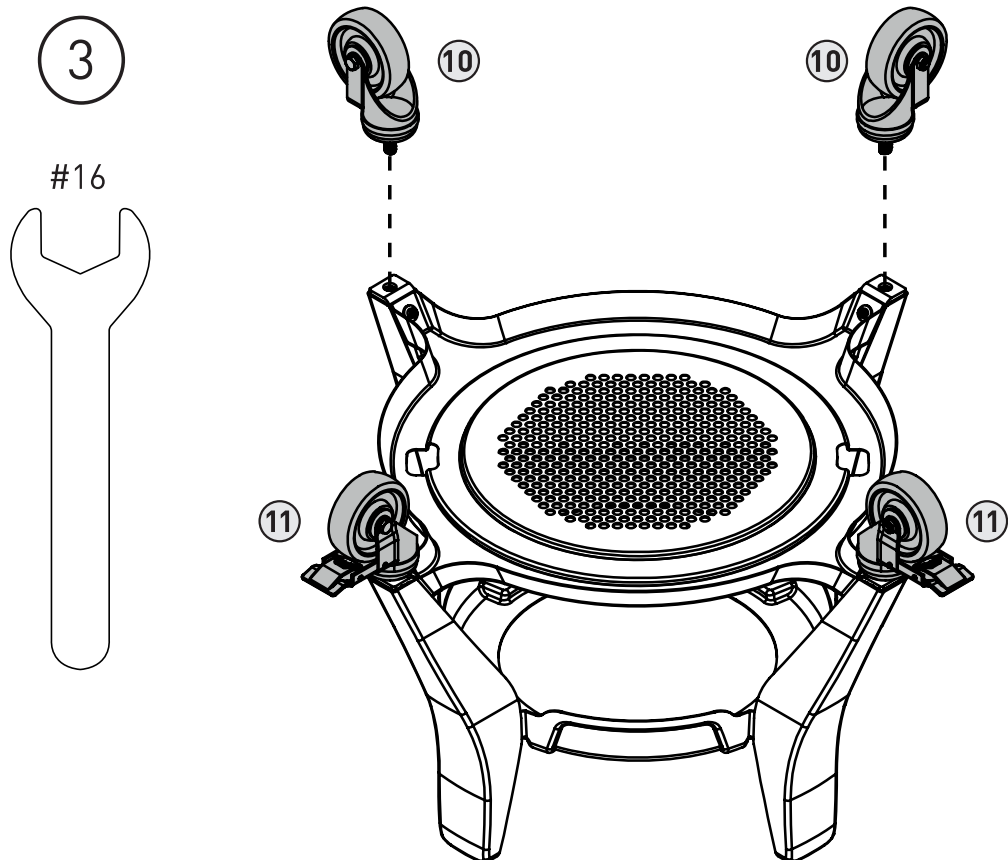


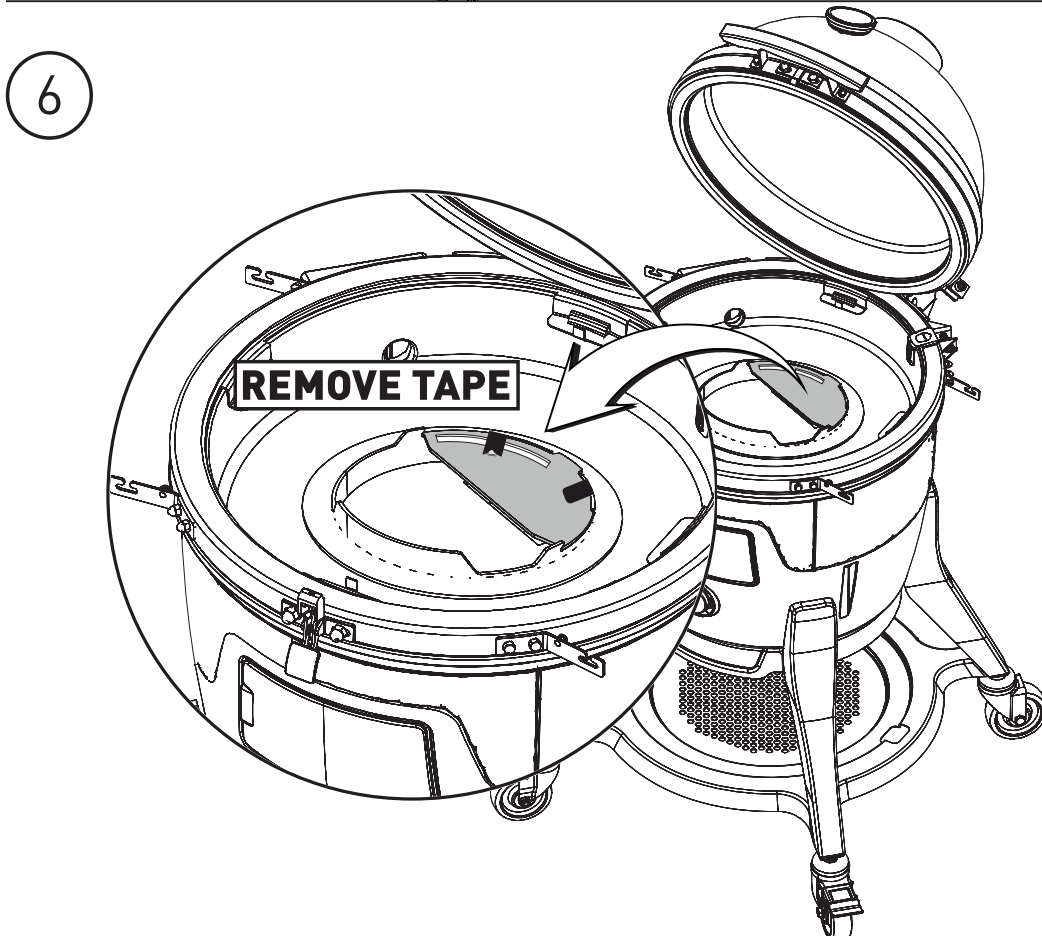
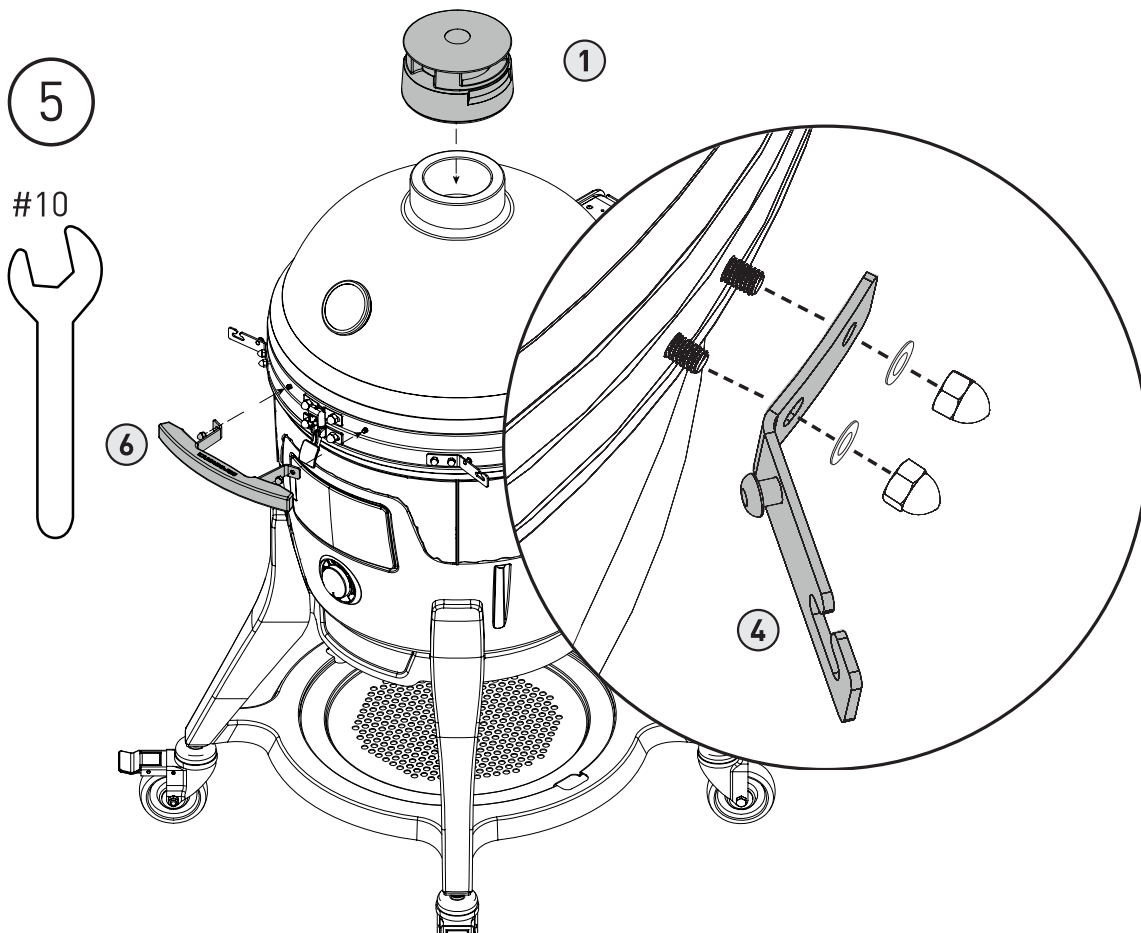
M6
X4

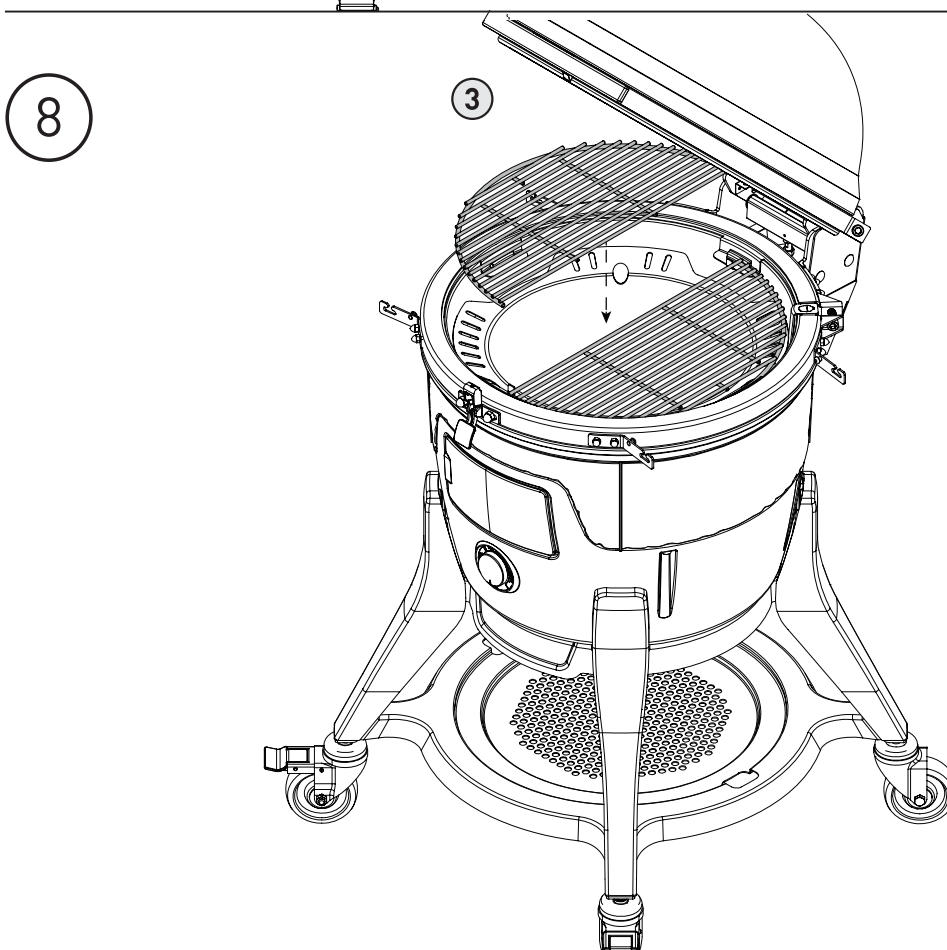
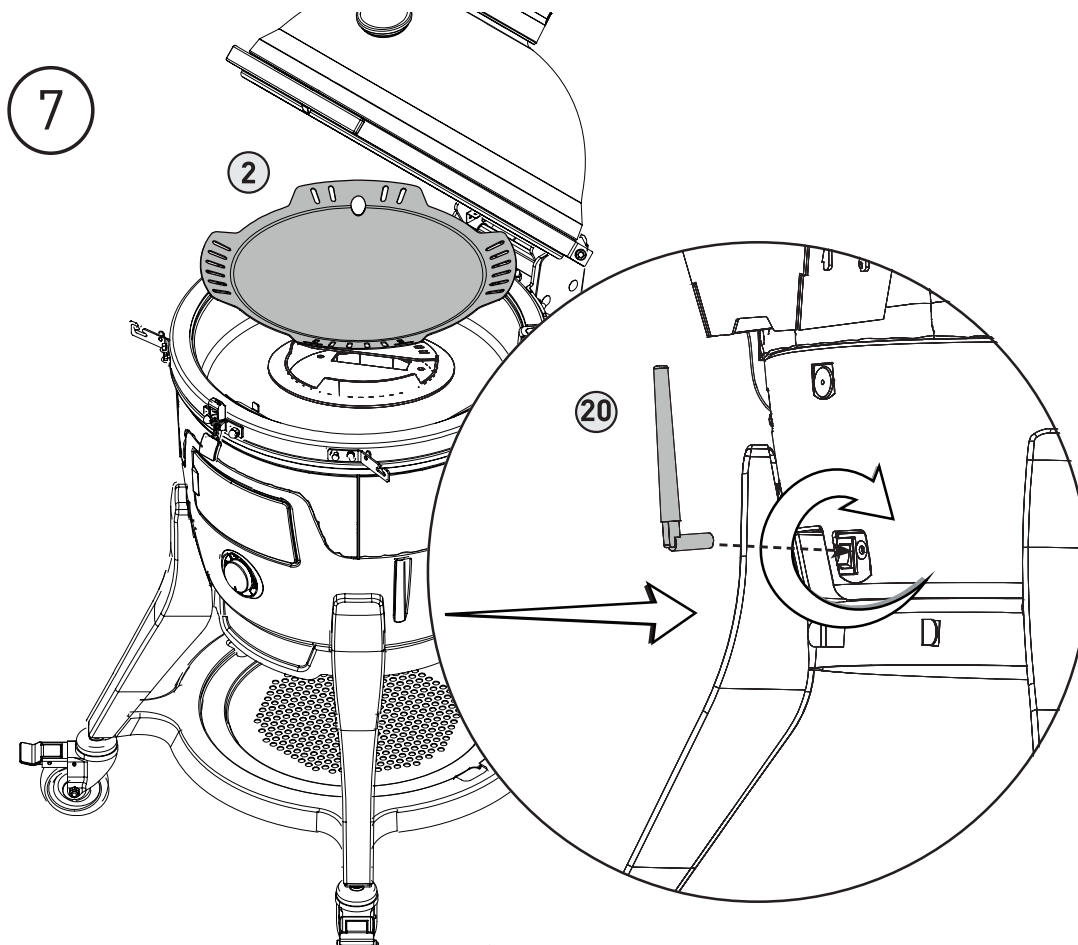


M6
X4







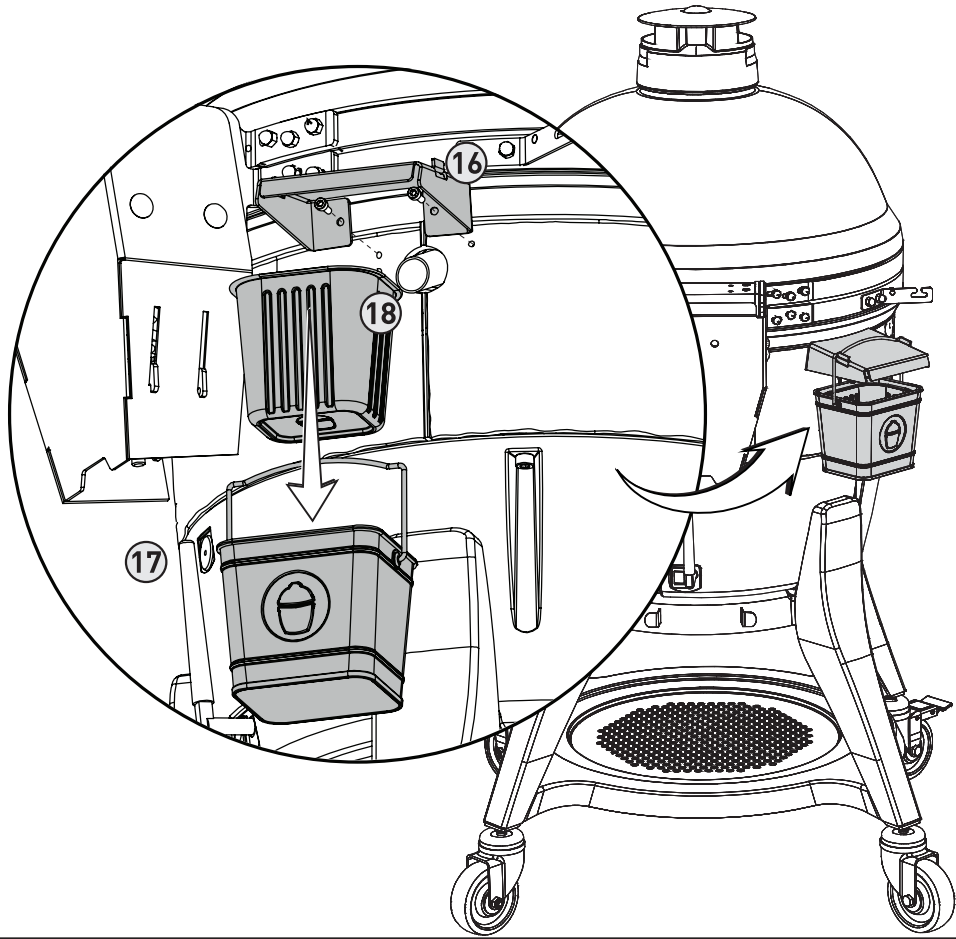
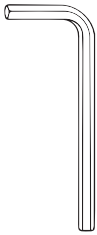


9

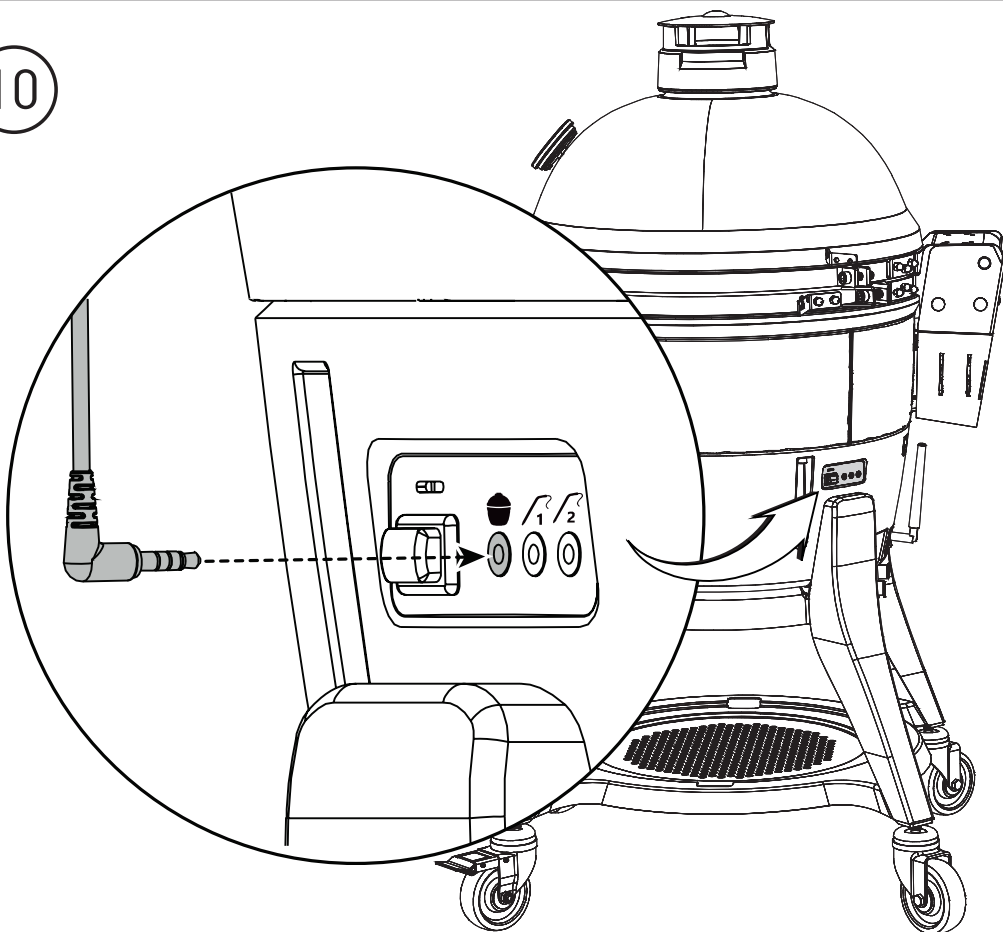
M5X10
X2



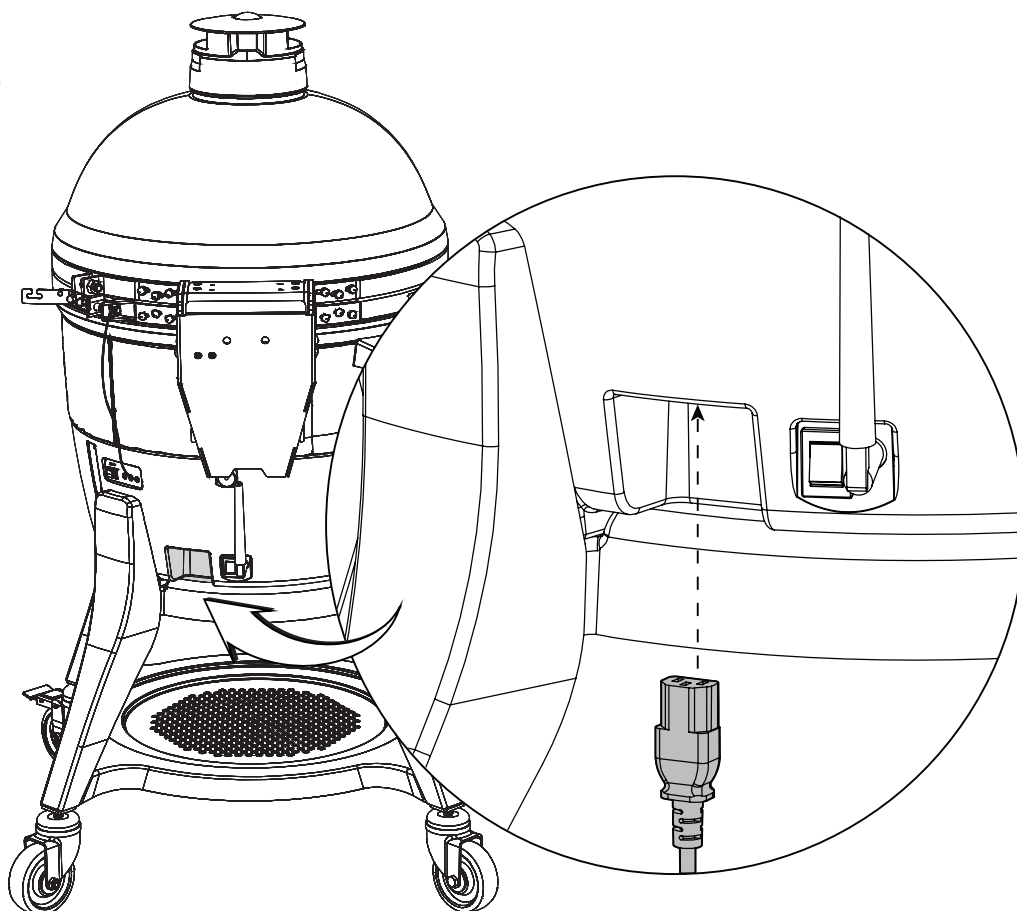
4mm



10



11



12

