

Half Moon

Caracole

A modern beauty, this shapely chair offers brilliance in every curve. Inspired by the splendor of a geyser erupting with steam and water, it blends shades of cerulean blue and smoke grey with a Dusty Silver finish. Its metal crescent back is finished in a bold shade of cerulean blue and appears to float above its upholstered seat cushion. A richly textured graphic pattern of cerulean and smoke adds depth and dimension to the seat cushion and inside seat back, while button tufting adds a designer touch. Its lasting character feels retro-inspired yet thoroughly fresh and modernized.



SKU: M090-018-131-A

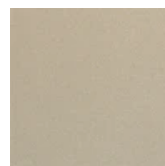
Dimensions in Inches: 28.25W × 25.5D × 29.75H

Dimensions in CM: 71.755W × 64.77D × 75.565H

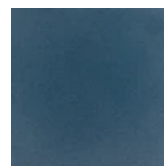
Features:

- Tight seat and back.
- Painted metal outback.

Finish:



Soft Radiance



Cerulean

Fabric:



8311-10CC

Construction: Plastic back frame, cushion