

SIMPLE MANUAL

Mini Hi-Fi System

To view the instructions of advanced features,
visit <http://www.lg.com> and then download Owner's Manual.
Some of the content in this manual may differ from your unit.

MODEL
CM8460



www.lg.com
Printed in China

WARNING: This product contains chemicals known to the State of California to cause cancer and birth defects or other reproductive harm. ***Wash hands after handling.***

FCC Compliance Statement

This equipment has been tested and found to comply with the limits for a Class B digital device, pursuant to Part 15 of the FCC Rules. These limits are designed to provide reasonable protection against harmful interference in a residential installation. This equipment generates, uses, and can radiate radio frequency energy and, if not installed and used in accordance with the instructions, may cause harmful interference to radio communications. However, there is no guarantee that interference will not occur in a particular installation. If this equipment does cause harmful interference to radio or television reception, which can be determined by turning the equipment off and on, the user is encouraged to try to correct the interference by one or more of the following measures:

- Reorient or relocate the receiving antenna.
- Increase the separation between the equipment and the receiver.
- Connect the equipment to an outlet on a circuit different from that to which the receiver is connected.
- Consult the dealer or an experienced radio/TV technician for help.

This device complies with part 15 of the FCC Rules. Operation is subject to the following two conditions: (1) this device may not cause harmful interference and (2) this device must accept any interference received, including interference that may cause undesired operation of the device. Any changes or modifications in construction of this device which are not expressly approved by the party responsible for compliance could void the user's authority to operate the equipment.

FCC RF Radiation Exposure Statement : This equipment complies with FCC radiation exposure limits set forth for an uncontrolled environment. This transmitter must not be co-located or operating in conjunction with any other antenna or transmitter.

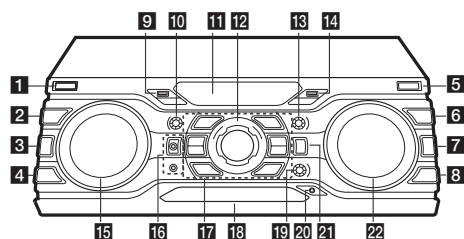
This equipment should be installed and operated with minimum distance 20 cm (7.8 inches) between the antenna and your body. Users must follow the specific operating instructions for satisfying RF exposure compliance.

Responsible Party :

LG Electronics USA, Inc.
1000 Sylvan Ave
Englewood Cliffs, NJ 07632
Tel: 1-800-243-0000

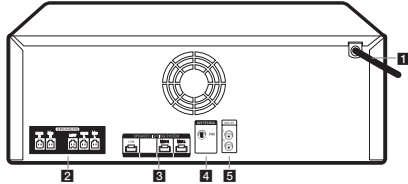


Front Panel



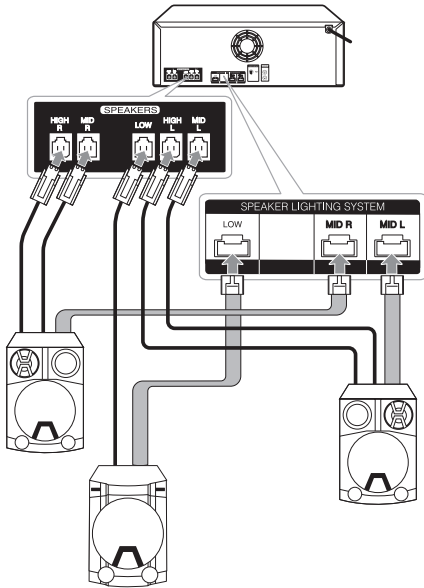
- 1** **⏻/I (Power)**
Turn the power on or off.
- 2** **DJ EFFECT**
Selects a desired DJ effect (FLANGER, PHASER, WAH, DELAY) and rotate EFFECT LEVEL to adjust the DJ EFFECT level.
- 3** **USER EQ**
Selects the sound effect created by your own.
- 4** **REGION EQ / BASS BLAST**
- Chooses region equalizer.
- Press and hold to select BASS effect directly.
- 5** **USB REC / DEMO**
Records to USB. / Shows Demo mode.
- 6** **SEARCH**
Moves to folder or file in selection mode.
- 7** **OK**
Selects a folder when searching a file.
- 8** **LIGHTING / VOICE CANCELLER**
- Turns on/off the lighting effects.
- You can enjoy the function while playing the music, by reducing singer vocal of music in the various source.
Press and hold to switch this mode on or off.
- 9** **USB 1 Port**
You can play or record sound files by connecting the USB device.
- 10** **BASS**
Adjusts BASS sound level when setting USER EQ.
- 11** **Display window**
- 12** **MASTER VOLUME**
Adjusts speaker volume.
- 13** **TREBLE**
Adjusts TREBLE sound level when setting USER EQ.
- 14** **USB 2 Port**
You can play or record sound files by connecting the USB device.
- 15** **SCRATCH / DJ EFFECT CONTROL**
Turn clockwise or counterclockwise to make Scratch sound. / Adjust DJ EFFECT level.
- 16** **MIC 1 / 2 jack**
Connect a microphone.
- 17** **⏮**
Stops playback or cancels DELETE function.
>||
- Starts or pauses playback.
- Selects Stereo/Mono.
△
Opens and closes the disc tray.
- KEY CHANGER**
Changes the key to suit your vocal range.
CLUB, DRUM, USER (DJ PRO)
Selects CLUB, DRUM or USER sound effect to mix
(If you want to use USER, you have to register a source with "Music Flow Bluetooth" app.)
1, 2, 3, 4 (DJ PRO PAD)
Press a desired sound pad
- 18** **Disc tray**
- 19** **MIC VOL / KEY CONTROL**
- Controls microphone's volume.
- Changes the key to suit your vocal range.
- 20** **PORT. IN jack**
Connect a portable device.
- 21** **F (Function) / WIRELESS LINK**
- Selects the function and input source.
- Press and hold for 3 seconds to select WIRELESS PARTY LINK mode.
- 22** **⏮ << SEARCH >> ||**
- Searches a folder or a file.
- Selects the radio stations.

Rear Panel




- 1** Power cord
- 2** **SPEAKERS** connector
- 3** **SPEAKER LIGHTING SYSTEM**
Connect the speaker lighting cables.
- 4** **ANTENNA** (FM)
- 5** **AUX IN** (L/R)
Connect an auxiliary device.

Speaker Connection



Additional Information

Specifications

Power Requirements	120 V ~ 60 Hz
Power Consumption	250 W
Dimensions (W x H x D)	Approx. 450 mm x 160 mm x 355 mm (17.7 inch x 6.3 inch x 14 inch)
Net Weight	Approx. 6 kg (13.2 lb)
Bus Power Supply (USB)	5 V  500 mA
Amplifier (Total RMS output power)	2,750 W

Design and specifications are subject to change without notice.

Controller App



Download the **Music Flow Bluetooth** App to your device.

LG Sound Sync (Wireless)



For more information, download the online owner's manual. <http://www.lg.com>

Additional Information

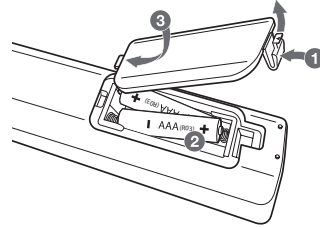
Caution

- When you use the multiple socket, it is advisable to use 15 A socket. 10 A socket may cause power off due to lack of power supply.
- Do not place objects on the speakers. It may cause the objects to fall and make property damage.
- Install the speakers on a firm surface not to slide. The vibration caused by the strong output can shake and move the speakers.
- Avoid turning up max volume in a small enclosed space. The powerful and intense output of the speakers can shake the ceiling and get the objects in the room falling.
- To protect from hearing damage, keep the sufficient distance from the speaker. The overwhelming sound from the speaker may cause a person's hearing damage.
- Allow more than 20 cm of free space between the main set and the speakers when you install the main set on the ground. High sound pressure from the speakers can make the set tremble to disturb the CD playback.
- Connect the power cord to wall outlet directly if possible. Or when you use an extension cable, it is highly recommended to use an extension cable of 110 V / 15 A or 230 V / 15 A, otherwise the unit may not operate properly because of the lack of power supply.
- Do not overload the extension cord with excessive electrical load.

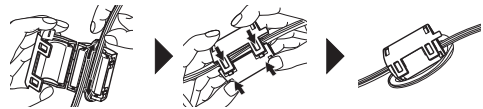
How to disconnect the wireless network connection or the wireless device

Turn off the unit by pressing the power button for more than 5 seconds.

Replacement of battery



About Ferrite Core (Optional)



Wind power cord cable, SPEAKERS cables, WOOFER cables and SPEAKER LIGHTING cables around the ferrite core.

[illegible]

[illegible]



LG Customer Information Center

1-800-243-0000	USA, Consumer
1-888-865-3026	USA, Commercial

Register your product Online!

www.lg.com