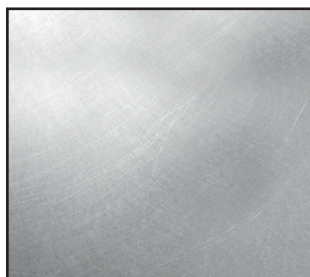


# Foster Sinks

Michelangelo Sink 1B 30" x 15 6/8" UM **Vintage - 1418 680**

## HIGHLIGHTS



### Vintage finish

An old-fashioned look, along with the convenience of a steel surface that is not afraid of scratches and nicks. The asymmetric brushing obtained with traditional methods simulates the signs of aging and gives the steel a new and original appeal.



### Sturdy sink

The quality of Foster sinks is also in the thickness. All models use top grade stainless steel to manufacture "sturdy" sinks with an elegant design.



### Diamond shaped bottom

The water drainage on the base of the sink is a minimalist but original design, with perfectly square edges and a diamond shaped bottom that allows perfect flow of water



### Accessories

The concept of functionality is a key element for Foster. Each sink is matched by a series of practical and elegant accessories that transform the sink into a functional working center.



### Undermount

The classy and contemporary way to install a sink, here proposed in a wide range of different models and designs.



Series	Michelangelo Series
Model	Michelangelo 1B 30" x 15 6/8" UM Vintage
material	AISI 304 stainless steel
finish	Vintage finish
thickness	17 Gauge (1,5 mm)
Inset type	Undermount
overall dimensions	31 3/16" x 17 23/32"
bowls dimensions	1 bowl 26 27/32" x 15 3/4"
bowls dept	10"
Cut out	30" x 16 17/32" template provided
waste fitting type	3 1/2" space - with satin steel cover
bowls bottom	x cross bending for easy water draining
Underside	protected with heavy duty undercoating
fixing system	undermount fixing kit (brass insert and clips)
<b>Accessories:</b>	M4, N4, T2*, P2*, Z2*
accessories note	To use only with N4 chopping board

## FAUCETS



**Tube**  
cod. 8477 105



**Hook**  
cod. 8479 105



**Gamma 3 ways**  
cod. 8496 105

Highlights photographs are for illustration purposes only and may not reflect actual product.

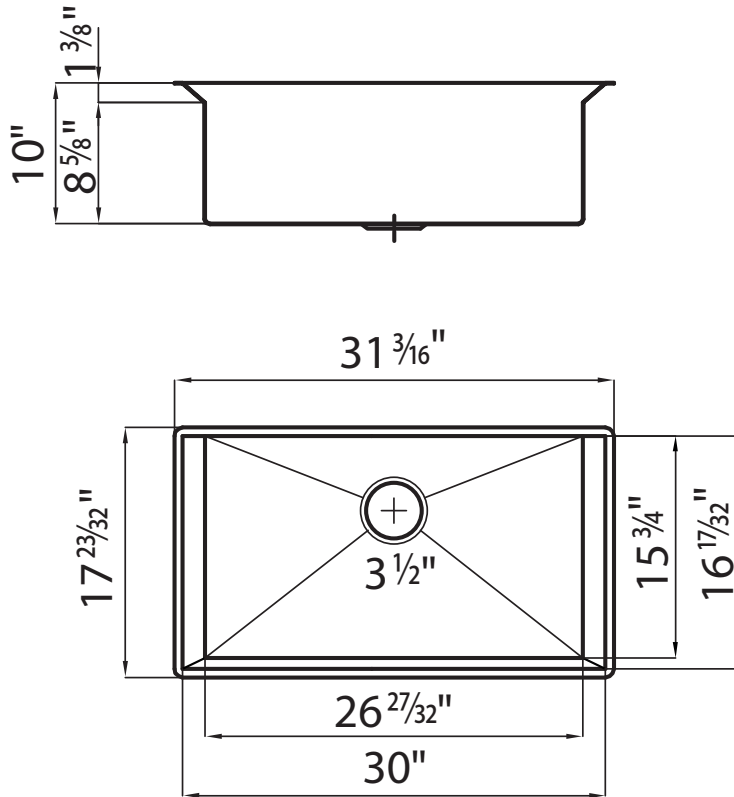
FOSTER MILANO INC.  
6001 NORTH POWERLINE ROAD  
FORT LAUDERDALE, FLORIDA 33309  
info@foster-us.com  
www.foster-us.com

**Foster**   
kitchen appliances

# Foster Sinks

Michelangelo Sink 1B 30" x 15 6/8" UM **Vintage - 1418 680**

## DIMENSIONS



## ACCESSORIES



## CUT OUT

 = cut-out size: 30" x 16 17/32"