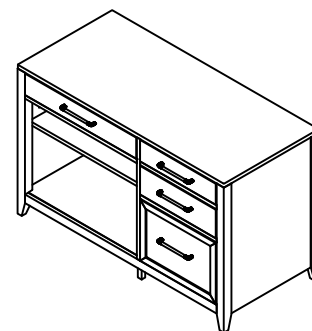


**Warning :**

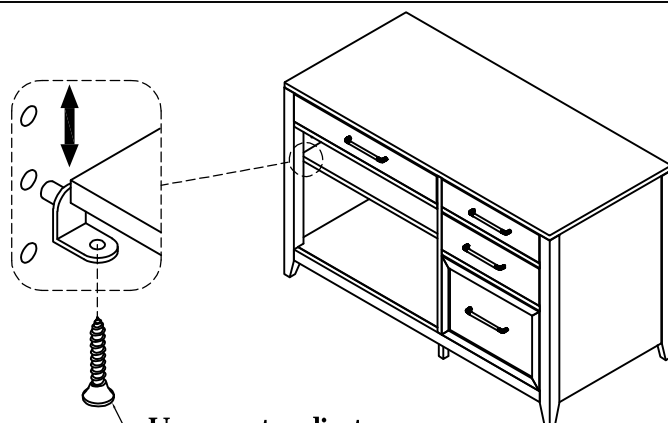
- Be sure to check all packing material carefully for small parts, which may have come loose inside the carton during shipment.
- To prevent possible scratches and damage, this furniture must be assembled on a soft surface such as a blanket or carpet.

**Important Use Information:** We recommend using coasters, placemats and trivets when placing hot or cold containers on this item. It is also recommended to quickly cleanup any spills to minimize exposure to moisture. Doing so will prolong the life and look of the item for many years.



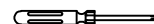
46233  
Computer Credenza

**Components and Hardware List**



Unscrew to adjust  
the shelf height

Tool Required  
(Not provided)  
Phillips Screwdriver

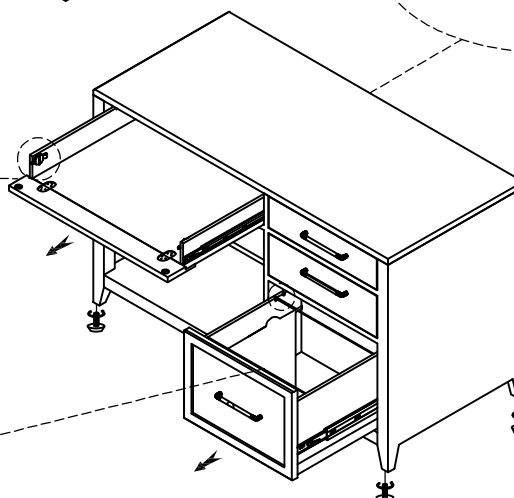
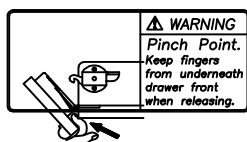


Furniture Tipping  
Restraint Kit



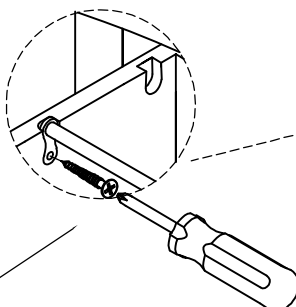
(A)

1 pc.



Adjustable leveler  
4 pcs.

Unscrew to  
adjust the file rod



For product and personal safety, a Furniture Tipping Restraint kit has been included with this unit which can help to minimize the risk of the unit accidentally tipping forward, if used and properly installed per the kit manufacturer's instructions.

The file drawers may be set up to use either letter or legal size hanging file folders using the file rods installed in the file drawers.