



HORIZON

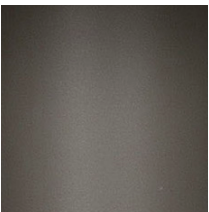
AN OUTDOOR LIVING COLLECTION

Sophisticated from every angle, the fashion-forward Horizon collection brings bold style to today's outdoor spaces. Crafted of natural teak wood, these unique designs are distinguished by clean lines, linear horizontal planes and softly rounded legs and corners. Perfect for creating a luxe, modern organic aesthetic outdoors, Horizon is expertly crafted from premium-grade, all-weather teak that will beautifully patina as it ages.

WEATHER READY MATERIALS



NATURAL TEAK




ALUMINUM

FEATURES + BENEFITS

- Chic designs that reinvent the appeal of classic, natural teak wood
- Frames crafted of strong, premium-grade natural teak that's historically durable, water-repellant, and resistant to warping or cracking
- Features stunning natural grain patterns
- Offered in a Natural Teak finish with Aluminum
- Next-level supportive comfort comparable to Vanguard's indoor upholstery based on engineered frame scale, pitch and cushioning materials
- Signature, trend-forward design details
- Fashionable performance fabric cover options
- Exceptional cushion comfort construction:
 - High-performance Qualux HR foam core (2.0+ density at 21 lbs. ILD) delivers softer surface with higher rebound for years of consistent support
 - Plush comfort layer (1.25 oz polyester fiber) wraps around foam core for luxe comfort and loft
 - Durable, water-resistant interior casing (non-woven fabric) is heat-sealed to prevent moisture penetration

OUTDOOR LIVING
COLLECTION

 Proudly Upholstered
in the USA

VANGUARD®
FURNITURE



WWW.VANGUARDFURNITURE.COM



Horizon Bench Seat Sofa OV100-ES1 *(shown)*
Horizon Two Seat Sofa OV100-ES2
Horizon Three Seat Sofa OV100-ES
W 108 D 35 H 30.5
Natural Teak.



Horizon Chair OV100-CH
Horizon Swivel Chair OV100-SW *(shown)*
W 34 D 35 H 30.5 Arm: H 24.25
Horizon Ottoman OV100-OT
W 29 D 29 H 18.5
Natural Teak.



Horizon Left Arm Chaise OV100-LAH *(shown)*
Horizon Right Arm Chaise OV100-RAH
W 34 D 68 H 30.5
Natural Teak.



Horizon Chaise Lounge OV100-CL
W 35 D 80.5 H 35
Natural Teak, Adjustable Back. *Rendering shown.*

HORIZON SECTIONAL STYLES:



Left Arm Two Seat Loveseat OV100-LAL
Left Arm Bench Seat Loveseat OV100-LL1
Right Arm Two Seat Loveseat OV100-RAL
Right Arm Bench Seat Loveseat OV100-RL1
W 68 D 35 H 30.5
Rendering shown.

Armless Two Seat Loveseat OV100-ALS
Armless Bench Seat Loveseat OV100-AL1
W 65 D 35 H 30.5

Corner Chair OV100-CC
W 35 D 35 H 30.5

Bumper OV100-B
W 51 D 30 H 18



Horizon Rectangular Cocktail Table O298CR
W 60 D 32 H 17
Natural Teak.



Horizon Square Cocktail Table O298CS
W 38 D 38 H 17
Natural Teak. *Rendering shown.*



Horizon Round Cocktail Table O298C
W 46 D 46 H 17
Natural Teak.



Horizon End Table O298L
W 24 D 28 H 23
Natural Teak.



Horizon Spot Table O298EE
W 12 D 12 H 22
Natural Teak Top, Aluminum Base.



Horizon Rectangular Dining Table O298T1
W 88 D 44 H 29.25
Natural Teak.



Horizon Round Dining Table O298T2
W 60 D 60 H 29.25
Natural Teak.



Horizon Dining Arm Chair OV100A *(shown left)*
W 24 D 23.5 H 33.25 Arm: H 25
Horizon Dining Side Chair OV100S *(shown right)*
W 19.5 D 23.5 H 33.25
Natural Teak.
Also Available without Cushion: OV101A, OV101S



Horizon Bistro Table O298T3
W 38 D 38 H 36
Natural Teak Top, Aluminum Base.



Horizon Bar Stool OV100-BS *(shown left)*
W 24 D 23.5 H 42
Horizon Counter Stool OV100-CS *(shown right)*
W 24 D 23.5 H 36
Natural Teak.
Also Available without Cushion: OV101-BS, OV101-CS

HOW TO CARE FOR YOUR OUTDOOR FURNITURE Once the weathering of the finish begins, we recommend the following: Hose down the furniture (DO NOT use a power washer) and clean with Golden Care® Hardwood & Teak Cleaner using a sponge or soft scrub brush to remove dirt and loose paint, ensuring a clean surface. Allow the surface to dry for 24 hours. If exposure to moisture over time has raised the wood grain, sand lightly with 120-grit sandpaper. Apply Golden Care® Instant Grey to maintain the color of your finish. Allow to air dry for 24 hours. Apply Golden Care® Hardwood & Teak Shield to protect from UV rays, mold and mildew, and food and drink stains. **RECOMMENDATIONS:** Avoid letting water stand on the surface of furniture and cushions. Do not allow wet cushions to sit on a frame for extended periods of time, as trapped moisture will contribute to the deterioration of the finish. We recommend using furniture covers for teak items when not in use; furniture cushions and covers should be clean and dry before covering. Cushions should be removed - whenever possible - before covering the frames for longer than a few days to avoid mold and mildew build-up. If cushions get wet, tip them on their sides with the zipper facing down and unzipped to ensure that all water drains.

VANGUARD®
FURNITURE

WWW.VANGUARDFURNITURE.COM