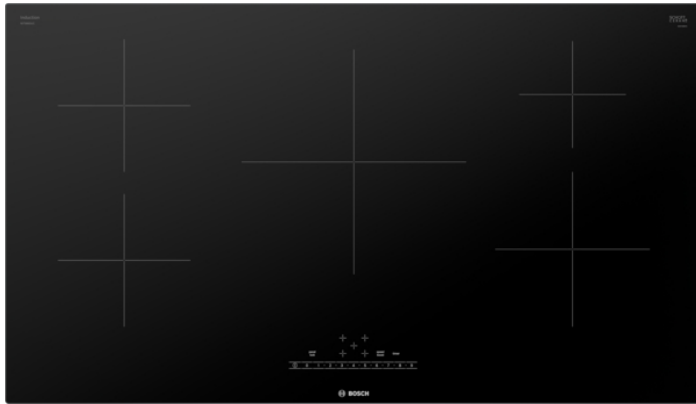


36" Induction Cooktop, NIT5660UC, Black Frameless



Features and Benefits

Design

- 5 Induction Cooking Zones
- PreciseSelect® - Direct Cooking Level Selection (17 Settings)

Efficiency

- SpeedBoost® - Adds Even More Power to Speed Up the Cooking Process
- PotSense - Automatically Recognizes Bottom of Pan on Cooking Element

Convenience

- Use the Kitchen Timer to Measure Cooking Time or as a Reminder

Safety

- ChildLock - Prevents the Cooktop from Being Accidentally Switched On, Locks Temperature Settings if in Use
- Digital 2-Stage Residual Heat Indicator for Each Cooking Zone
- Wipe Protection - Quickly Pauses Settings to Clean as You Go

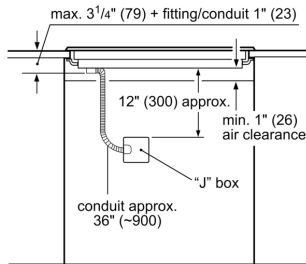
Notes: All height, width and depth dimensions are shown in inches. *Please refer to installation instructions prior to making cutout. BSH reserves the absolute and unrestricted right to change product materials and specifications, at any time, without notice. Consult the product's installation instructions for final dimensional data and other details. Applicable product warranty can be found in a accompanying product literature or you may contact your account manager for further details.

For more information on our entire line of products, go to boschappliances.com or call 1-800-944-2904.

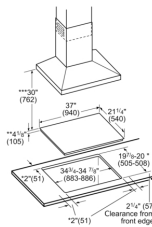
Copyright ©2022 BSH Home Appliances Corporation. All rights reserved. Bosch is a registered trademark of Robert Bosch GmbH.

Litho Date: 08/2022

36" Induction Cooktop, NIT5660UC, Black Frameless



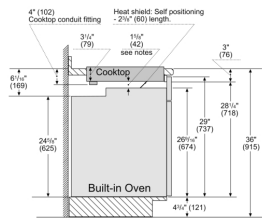
Measurements in inches (mm)



- * Minimum clearance from the cooktop cutout to the wall
- ** Installed depth includes a gap of 1" (25 mm) for ventilation
- *** Minimum clearance between the cooktop surface and lower edge of the exhaust hood.

measurements in inches (mm)

30" Built-in oven - under induction cooktop



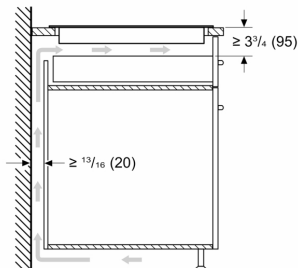
Notes:

Dimensions based on standard countertop height (36" with 4 1/2" toe kick including base plate).

The built-in oven can be installed below the induction cooktop as long as there is a minimum 1" (25) clearance between the bottom of the cooktop and the top of the oven.

measurements in inches (mm)

Measurements in inches (mm)



Features

| | |
|--|-------|
| Knob Material | |
| Sealed Burners | No |
| Burners with booster | All |
| Type of grate | |
| Total BTU load | |
| LP Gas Connection Rating | |
| Power of heating element (kW in boost) | [3.1] |
| Dimension of 1st heating element (in) | 7" |
| Dimension of 2nd heating element (in) | |
| Power of 3rd heating element (kW in boost) | [3.1] |
| Dimension of 3rd heating element (in) | 7" |
| Power of 4th heating element (kW in boost) | |
| Dimension of 4th heating element (in) | |
| Power of 5th heating element (kW in boost) | [2.2] |
| Dimension of 5th heating element (in) | 6" |
| Power of 6th heating element (kW in boost) | |
| Dimension of 6th heating element (in) | |

Technical Specification

| | |
|---|------------------------------|
| UPC code | 825225961529 |
| Variant color | Black |
| Energy source | Electric |
| Gas type | |
| Alternative gas type | |
| Watts | 8320 |
| Fuse protection | 40 |
| Volts | 208-240 |
| Frequency | 60 |
| Approval certificates | Dekra Mark C+US, FCC |
| Power Cord Length | 37" |
| Plug type | no plug |
| Required cutout size (HxWxD) (in) | 3 3/4" x 34 7/8" x 20" |
| Minimum distance from counter front (in) | 2 1/4" |
| Minimum distance from rear wall (in) | 2" |
| Overall appliance dimensions (HxWxD) (in) | 5/16"+3 3/4" x 37" x 21 1/4" |
| Product packaging dimensions (HxWxD) | 7 1/16" x 42 1/8" x 26 5/8" |
| Net weight | 52.000 |
| Gross weight | 61.000 |
| Total number of cooktop burners | 5 |

Notes: All height, width and depth dimensions are shown in inches. *Please refer to installation instructions prior to making cutout. BSH reserves the absolute and unrestricted right to change product materials and specifications, at any time, without notice. Consult the product's installation instructions for final dimensional data and other details. Applicable product warranty can be found in a accompanying product literature or you may contact your account manager for further details.

For more information on our entire line of products, go to boschappliances.com or call 1-800-944-2904.

Copyright ©2022 BSH Home Appliances Corporation. All rights reserved. Bosch is a registered trademark of Robert Bosch GmbH.

Litho Date: 08/2022