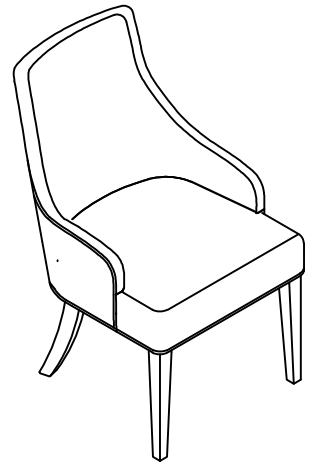


Warning :

- Be sure to check all packing material carefully for small parts, which may have come loose inside the carton during shipment.
- To prevent possible scratches and damage, this furniture must be assembled on a soft surface such as a blanket or carpet.



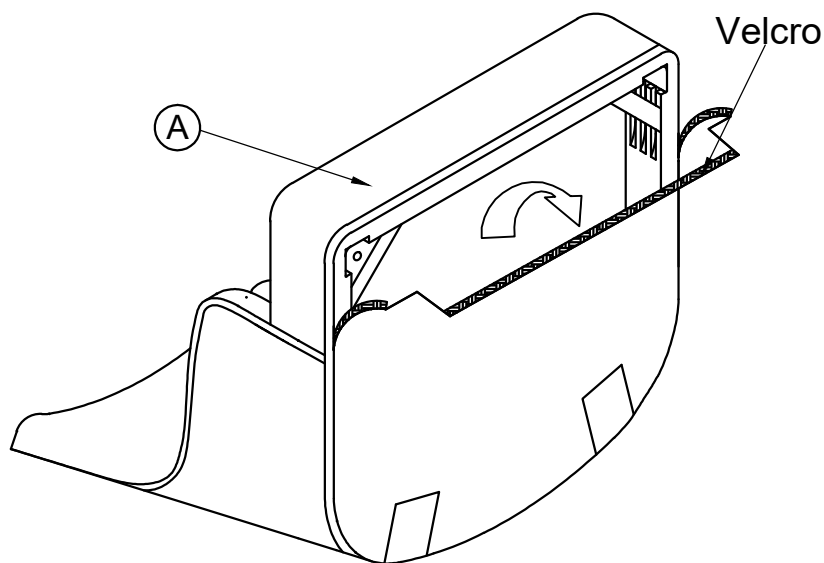
92600 / 01 / 02

Swoop Arm Uph Chair

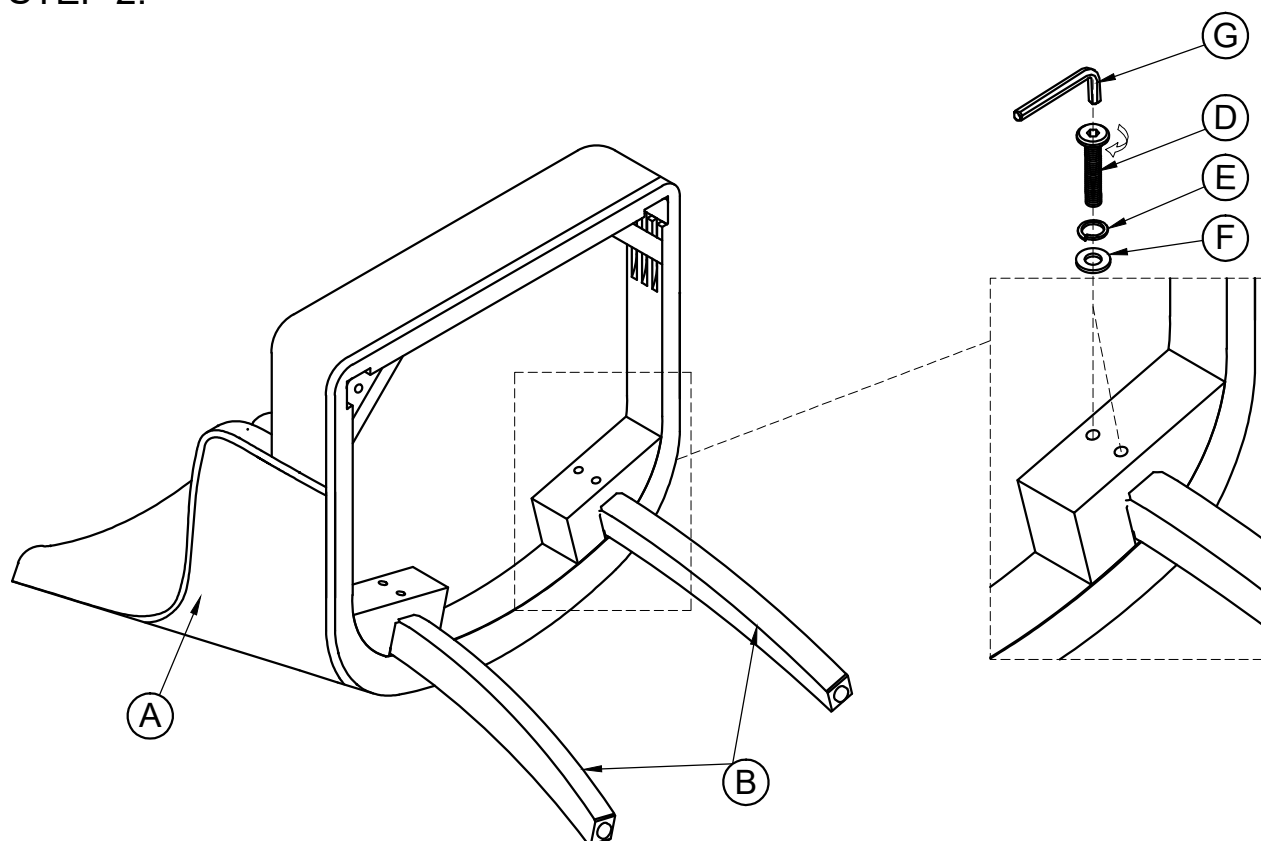
Components and Hardware List

Seat Frame (A) 1 pc.	Back Leg (B) 2 pcs.	Front Leg (C) 2 pcs.	Allen Head Bolt Ø5/16" x 18 x 2-1/8" (D) 8 pcs.	Ø5/16" Spring Washer (E) 8 pcs.
Ø5/16" Flat Washer (F) 8 pcs.	4mm Allen Key (G) 1 pc.			

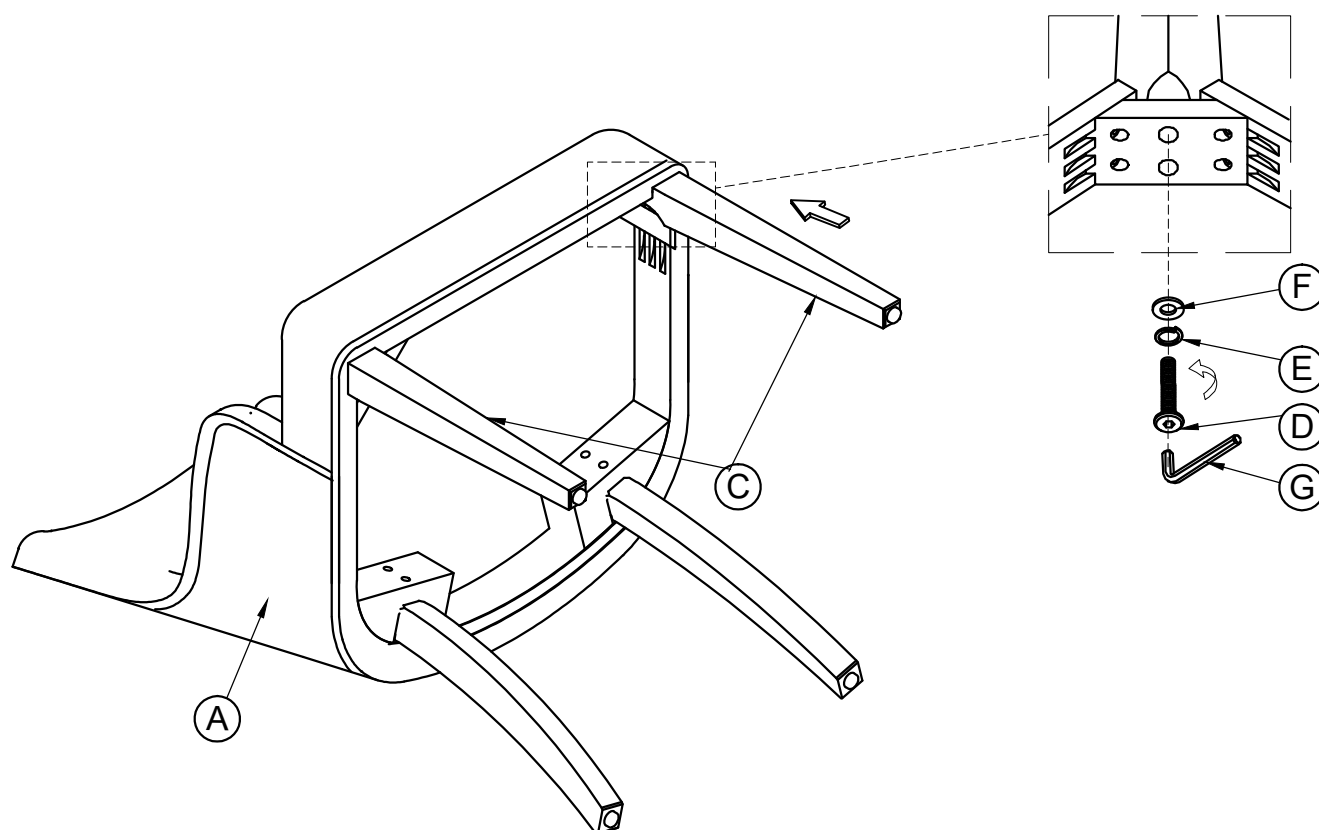
STEP 1: Remove Velcro strips on the seat frame to assemble the legs.



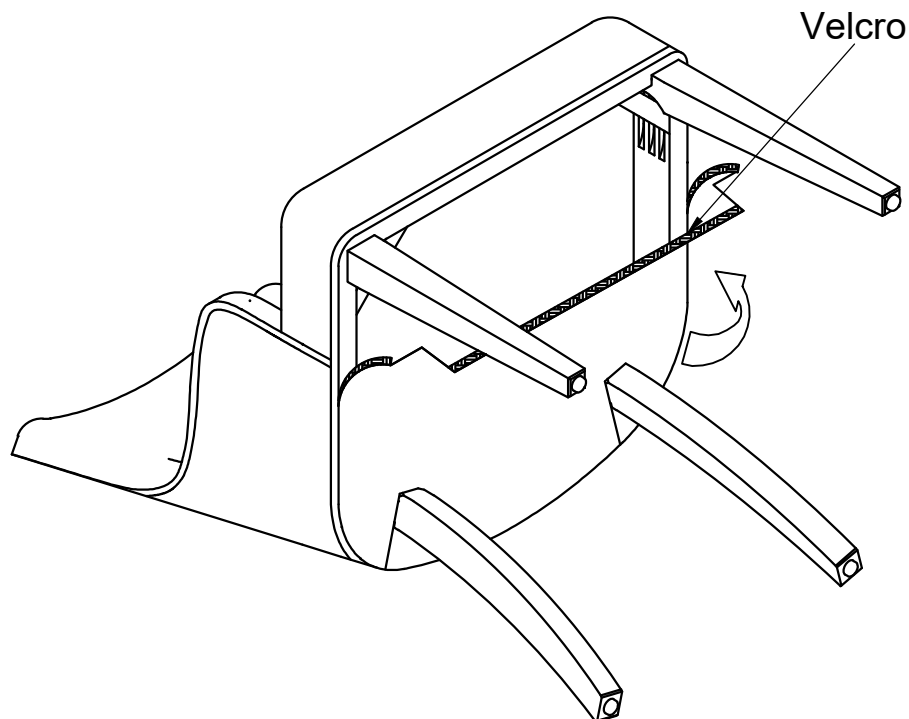
STEP 2:



STEP 3:



STEP 4: Attach all Velcro strips to the seat frame.



COMPLETE

