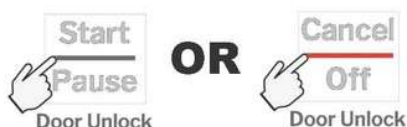


This microwave is equipped with a two-step Child Resistant Door. The requirement of child-resistant oven door latches has been implemented by all manufacturers of countertop microwave ovens to reduce the likelihood of young children handling hot food and beverage items and to further reduce the potential risk of injury. All persons should use caution when removing hot items from microwave ovens.

**PLEASE READ INSTRUCTIONS BELOW CAREFULLY.  
THE MICROWAVE OVEN IS SHIPPED WITH THE DOOR LOCKED.**



### Step 1

### CHILD RESISTANT DOOR OPERATION TO OPEN THE DOOR

The door will automatically lock **every time** a cooking cycle starts

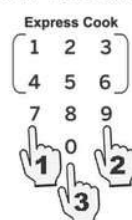
1. Press either **Start/Pause** or **Cancel/Off**
2. Press the **Front button (Door Latch Release)** or pull the handle depending on your model.

**Note:** Door will remain unlocked until next cooking cycle

### HOW TO DISABLE CHILD LOCK

In some cases, it may be desirable to disable this feature. For example, households that do not have young children or households where users may have physical limitations that make it difficult to operate the child resistant door may want to disable the two-step latch. This feature can be disabled by following these steps.

1. Press and hold the “7” key for 3-5 seconds or until you hear a beep. Release.
2. Press the “9” key. Release.
3. Press the “0” key. Release.



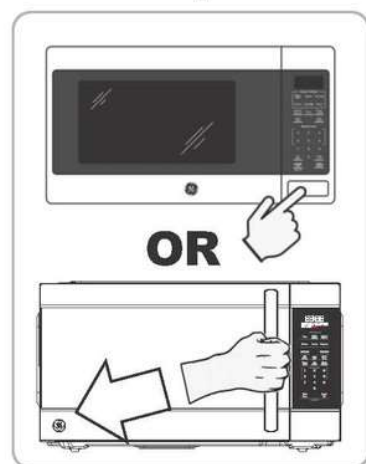
UnLo  
Disabled Confirmation  
Message

**Note:** some models will simply remove “lock” or “lock icon”

Loc  
Enabled Confirmation  
Message

**Note:** some models will display “lock” or “lock icon”

There will be two short beeps and the display will flash “UnLo” to confirm the default condition has been updated successfully. To re-enable the child resistant oven door, repeat steps 1-3 above. The display will display “Loc” to confirm the feature has been re-enabled.



### Step 2