

# GLPX

## Green Light Express® Dimming and Switching Panels – Contact Crestron for complete system design and pricing

Crestron Green Light Express® is a low-cost collection of dimming and switching panels with a feed-through wiring configuration. These

efficient lighting control panels are designed for use in office buildings, warehouses, parking garages, sports facilities, public spaces,

and anywhere centralized dimming or switching is required. With a smaller

form factor than the Crestron Green Light® Series, the Green Light Express

Series is the economical solution for reliable lighting control. An extensive selection of Crestron keypads, touch screens,

occupancy sensors,

photosensors, shade controllers, and numerous other peripheral options

afford astounding design flexibility with unparalleled capability for

integration.

The Green Light Express GLPX Series encompasses a range of switching

panels that feature standard switching, heavy-duty switching, single pole

relays, and double pole relays. In addition to switching, Green

Light Express panels offer dimming control for a wide variety of load

types including 2-wire and 3-wire fluorescent, magnetic low-voltage,

neon/cold cathode, and 0-10 Volt ballasts and drivers (4-wire).

Each

GLPX Series panel supports eight to 56 circuits and a feed-through wiring

configuration. With the addition of the control module, Crestron Green

Light Express is a versatile, economical switching and dimming solution in

any commercial application.

GLPX-MM Two-Stage Installation models afford peace-of-mind. In



### SPECIFICATIONS

#### Load Ratings

##### **Switching (GLPX-SW) -**

Switch Channels: 8 to 56 depending upon panel size and options, each

channel phase independent

Per Channel: 16 Amps at 100 to 277 Volts AC, 50/60 Hz;

Load Types: Incandescent, magnetic low-voltage, electronic low-voltage,

neon/cold cathode, fluorescent ballast, high-intensity discharge, LED,

motor

##### **High-Inrush Switching (GLPX-HSW) -**

Switch Channels: 8 to 32 depending upon panel size and options, each

channel phase independent

Per Channel: 16 Amps at 100 to 277 Volts AC, 50/60 Hz;

Load Types: Incandescent, magnetic low-voltage, electronic low-voltage,

neon/cold cathode, fluorescent ballast, high-intensity discharge, LED,

motor

Relay Lifetime: 1,000,000 on/off operations at full electronic ballast

load

##### **Heavy-Duty Switching (GLPX-HDSW) -**

## Green Light Express® Dimming and Switching Panels

Per Channel (Double Pole Relay): 20 Amps at 120-480 Volts AC;  
Load Types: Incandescent, magnetic low-voltage, electronic low-voltage,  
neon/cold cathode, fluorescent ballast, high-intensity discharge, LED,  
motor, electronic ballast

Relay Lifetime: 30,000 or more on/off operations at full load

### Dimming (GLPX-2DIM8) -

Dim Channels: 8 to 24, depending upon panel size and options

Per Feed: 16 Amps at 100 to 277 Volts AC, 50/60 Hz;

Dim Load Types: Incandescent, magnetic low-voltage, neon/cold cathode,  
2-wire fluorescent ballast, 3-wire fluorescent ballast, LED

Switch Load Types: Incandescent, magnetic low-voltage,  
electronic

low-voltage, neon/cold cathode, fluorescent ballast, high-intensity  
discharge, LED

discharge, LED

discharge, LED

### Lighting Protection

Can withstand 6 kV / 3 kA surge, as per IEC 61000-4-5 and ANSI/IEEE

C62.41-1991

### Testing and Compliance

UL Listed, FCC Part 15

### Environmental

Temperature: 32° to 104° F (0° to 40° C)

Humidity: 10% to 90% RH (non-condensing)

### Enclosure

NEMA Type 1, IP20 rated protection, for indoor use only;

16-gauge galvanized steel, surface wall mount;

### Enclosure Dimensions

GLEX-FT-8: **Height:** 12-5/16 in (313 mm)

**Width:** 14-1/8 in (359 mm)

**Depth:**

**Width:** 16-1/8 in (409 mm)

**Depth:**

GLEX-FT-56 &

GLEX-FT-56-MMOE: **Height:** 39-21/32 in (1007 mm)

**Width:** 16-1/8 in (409 mm)

**Depth:**

GLEX-FT-84-HC &

GLEX-FT-84-MMOE: **Height:** 63 in (1600 mm)

**Width:** 15-1/4 in (388 mm)

**Depth:**

### Weight

GLEX-FT-8: 10.4 lbs (4.70 kg)

GLEX-FT-24 &

GLEX-FT-24-MMP: 6.0 lbs (2.72 kg)

GLEX-FT-56 &

GLEX-FT-56-MMP: 10.5 lbs (4.76 kg)

GLEX-FT-84-HC &

GLEX-FT-84-MMP: 11.0 lbs (5.00 kg)

Notes:

This product may be purchased from an authorized Crestron dealer. To find a dealer, please contact the Crestron sales representative for your area. A

list of sales representatives is available online at [www.crestron.com](http://www.crestron.com).

com/salesreps or by calling 800-237-2041.

The specific patents that cover Crestron products are listed online at:

[patents.crestron.com](http://patents.crestron.com).

Certain Crestron products contain open source software. For specific

information, visit [www.crestron.com/opensource](http://www.crestron.com/opensource).

Crestron, the Crestron logo, Crestron Green Light, and Crestron Green Light

Express are either trademarks or registered trademarks of Crestron

Electronics, Inc. in the United States and/or other countries. Other

trademarks, registered trademarks, and trade names may be used in this

document to refer to either the entities claiming the marks and names or

their products. Crestron disclaims any proprietary interest in the marks

and names of others. Crestron is not responsible for errors in typography

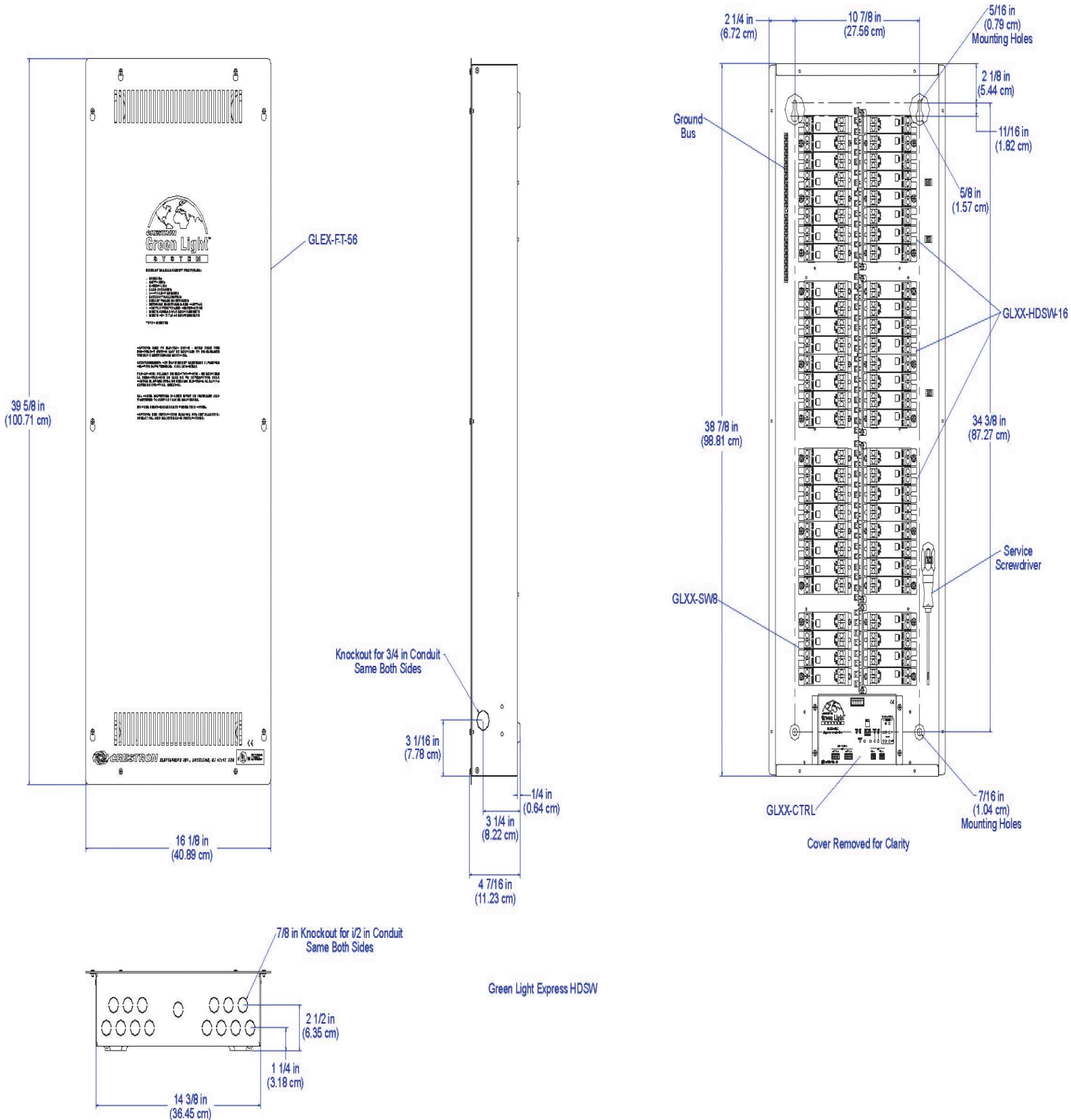
or photography. Specifications are subject to change without notice.

©2015 Crestron Electronics, Inc.

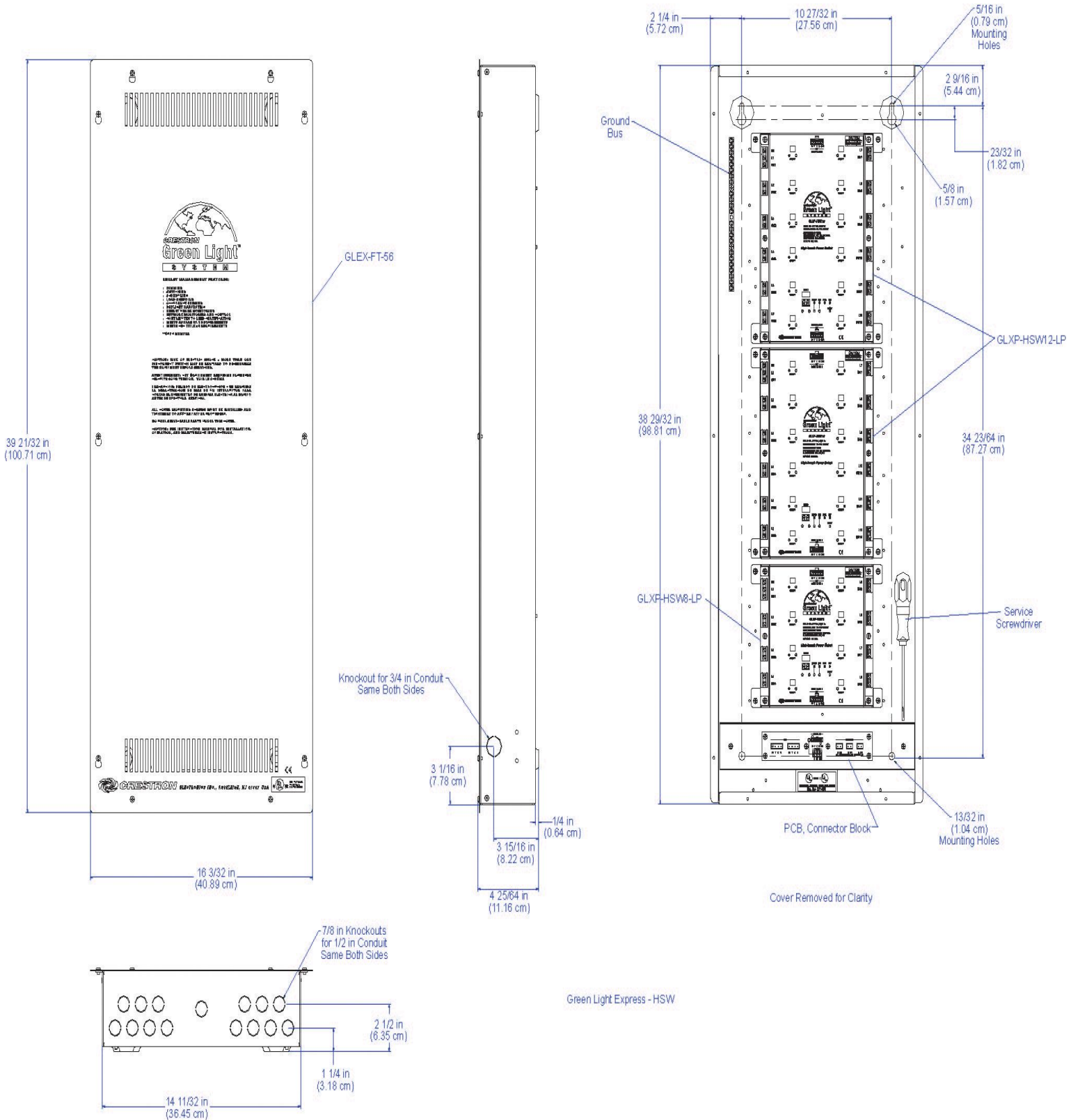


# GLPX

## Green Light Express® Dimming and Switching Panels

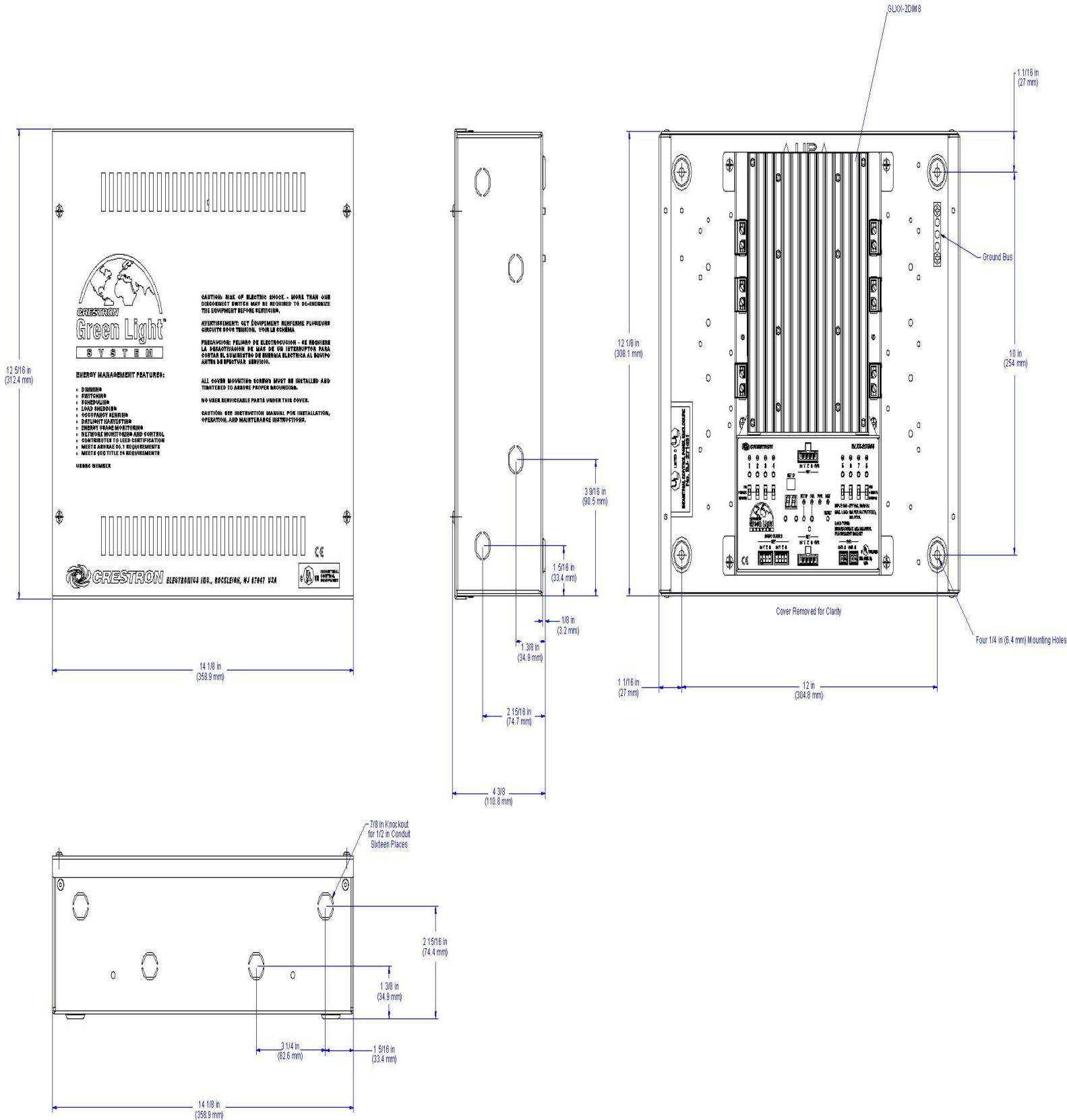


## Green Light Express® Dimming and Switching Panels â€”



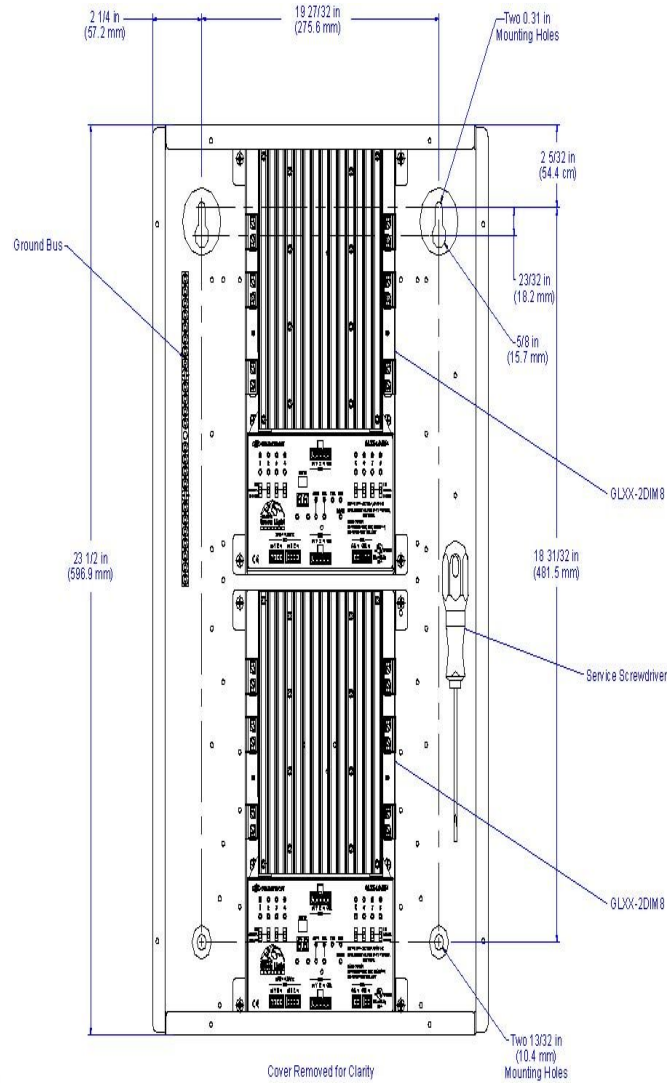
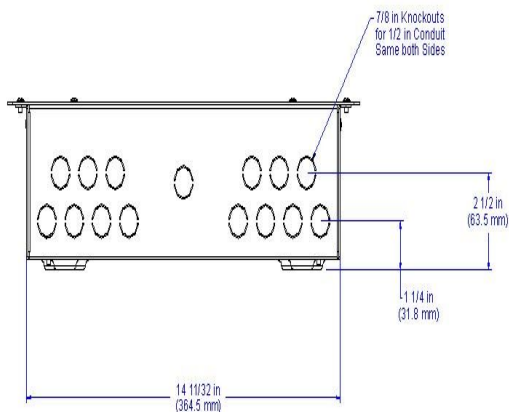
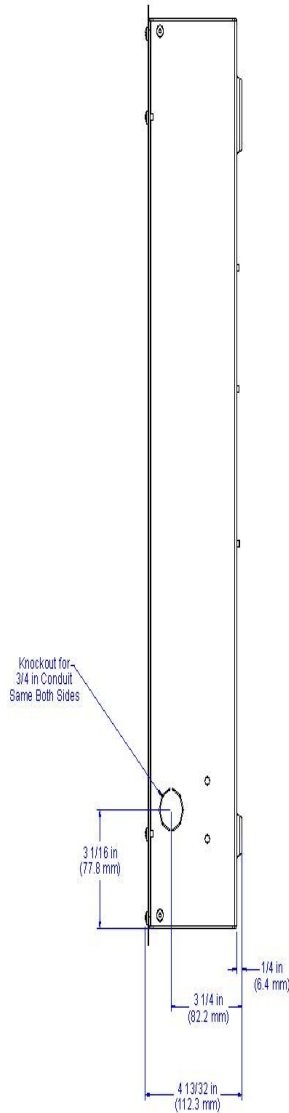
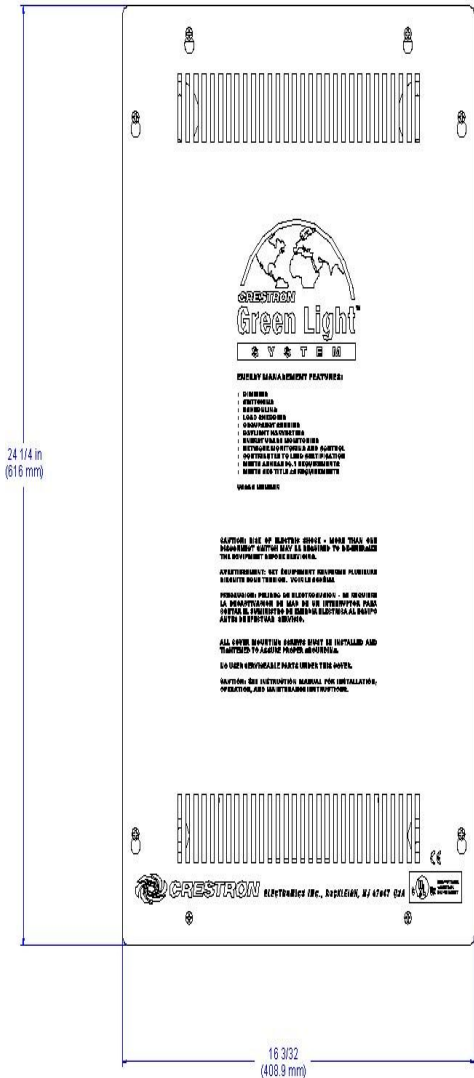


## Green Light Express® Dimming and Switching Panels



# GLPX

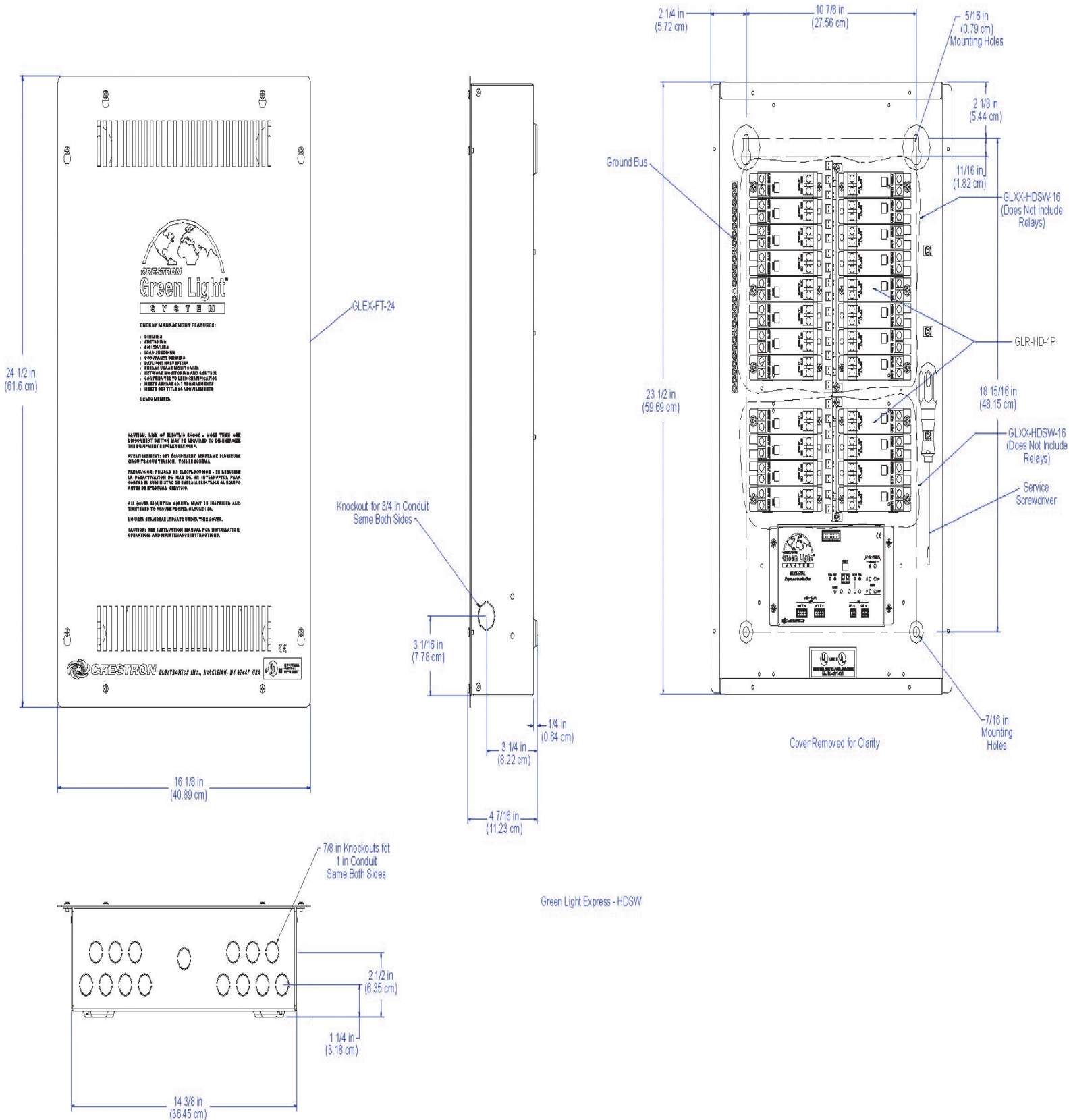
## Green Light Express® Dimming and Switching Panels â€”







## Green Light Express® Dimming and Switching Panels





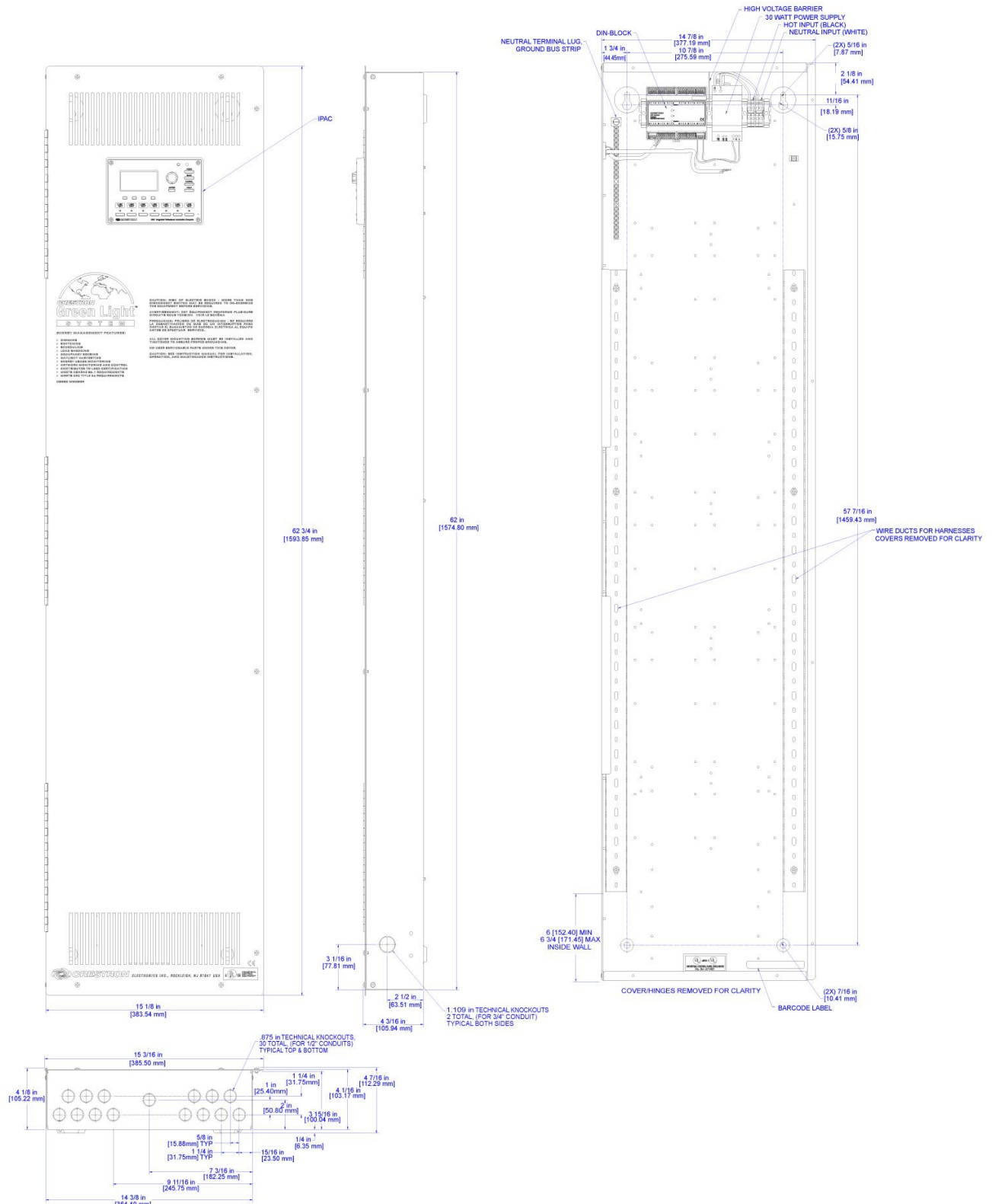








## Green Light Express® Dimming and Switching Panels

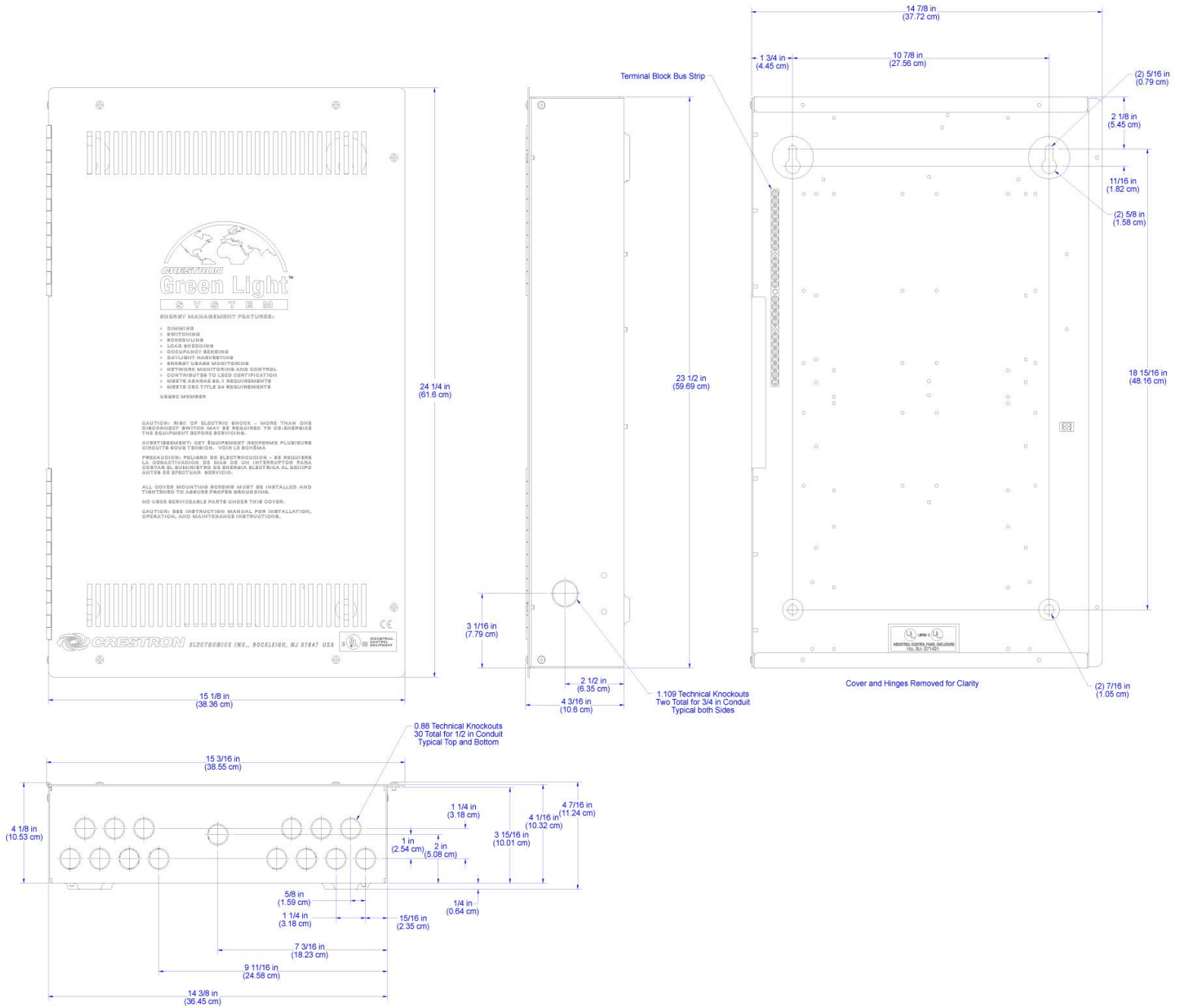




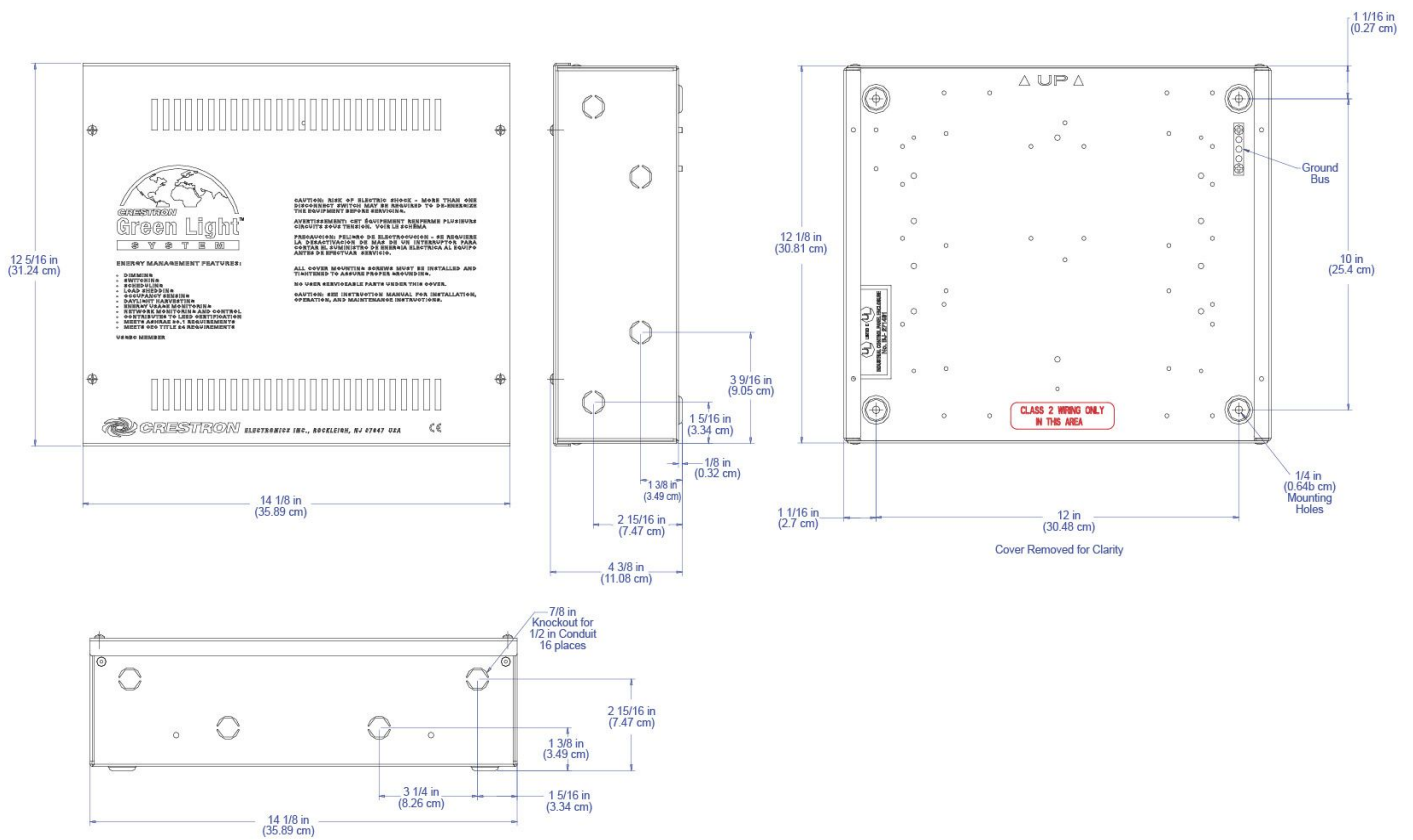
## Green Light Express® Dimming and Switching Panels



## Green Light Express® Dimming and Switching Panels



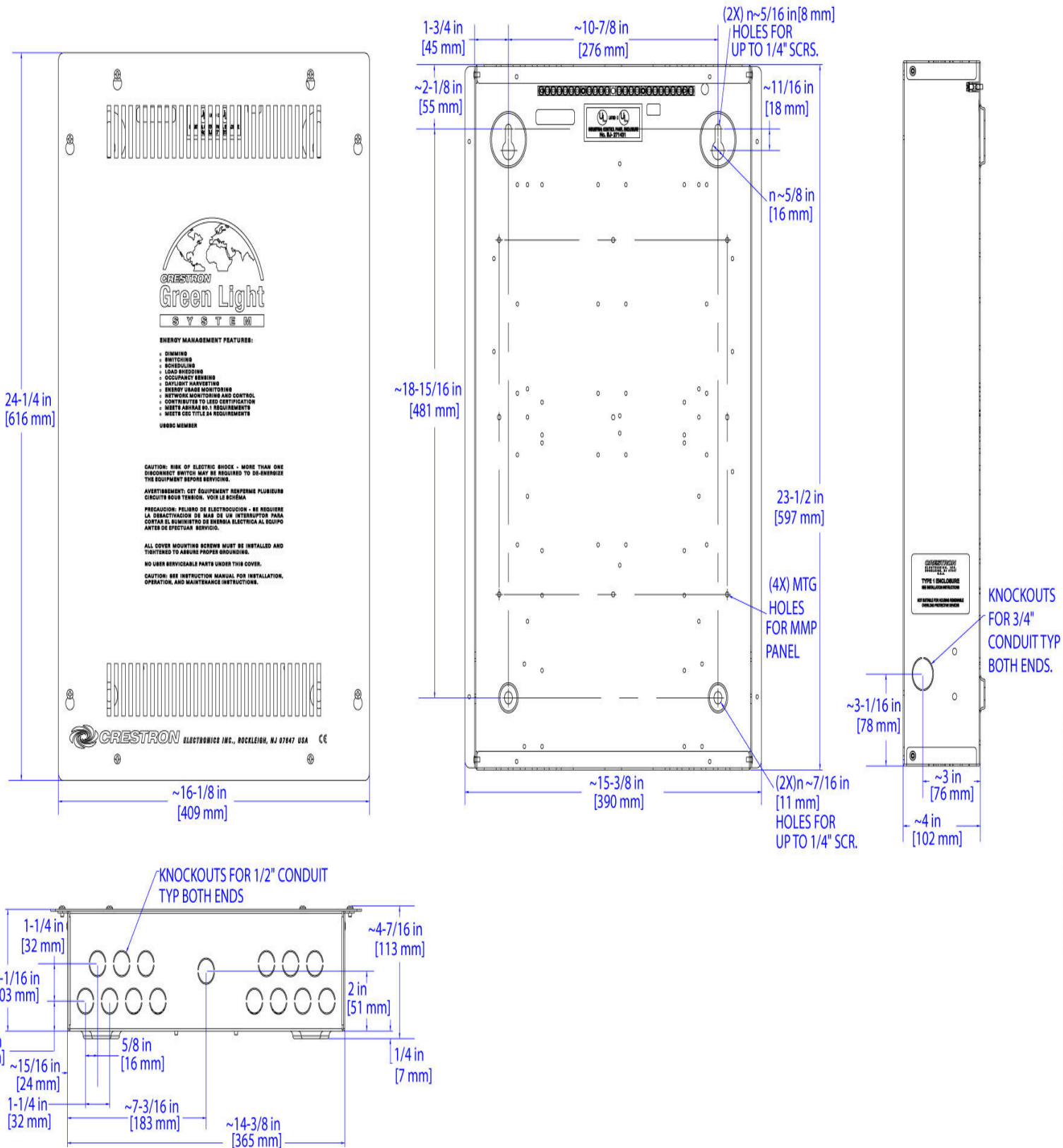
## Green Light Express® Dimming and Switching Panels





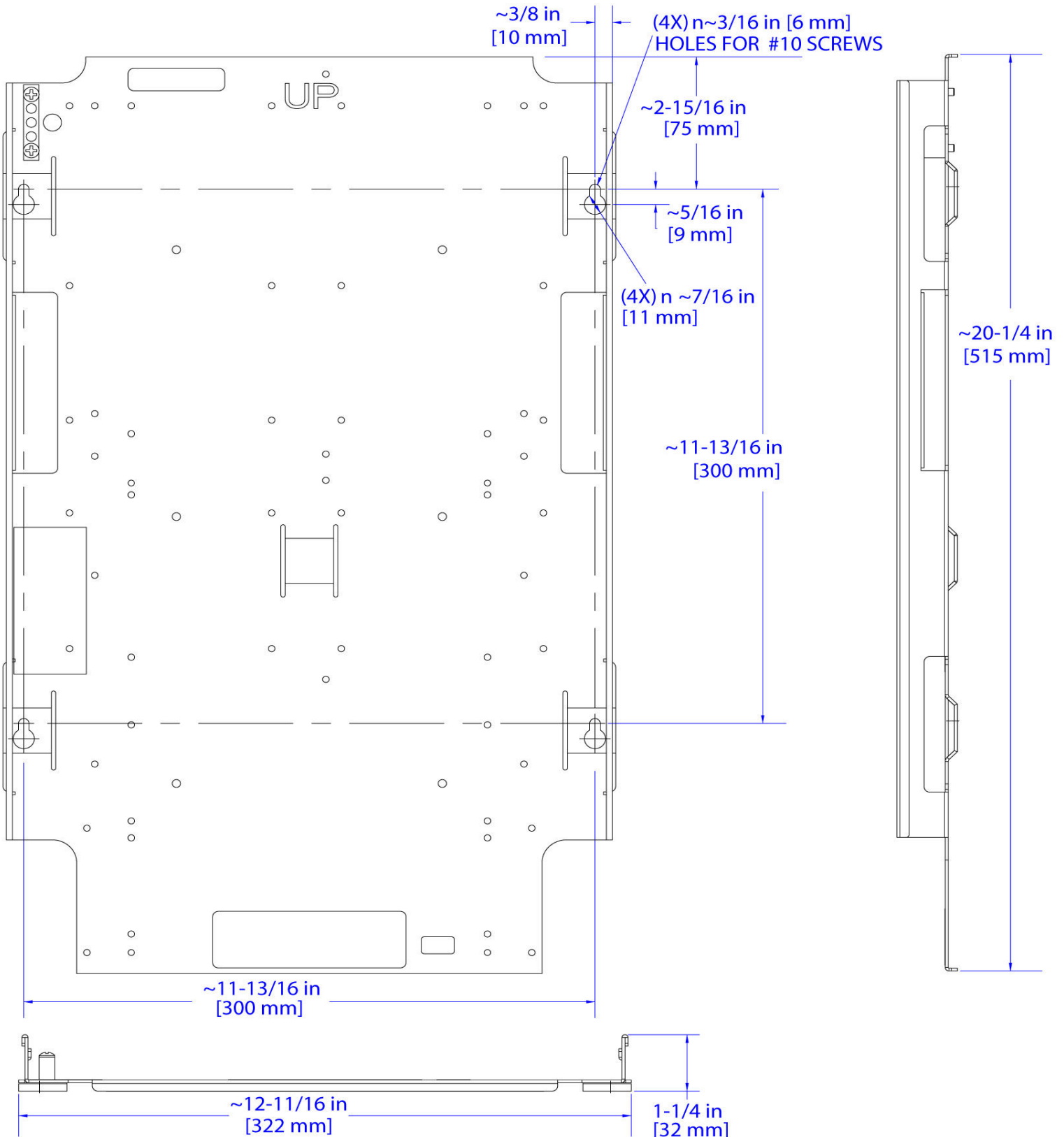
# GLPX

## Green Light Express® Dimming and Switching Panels

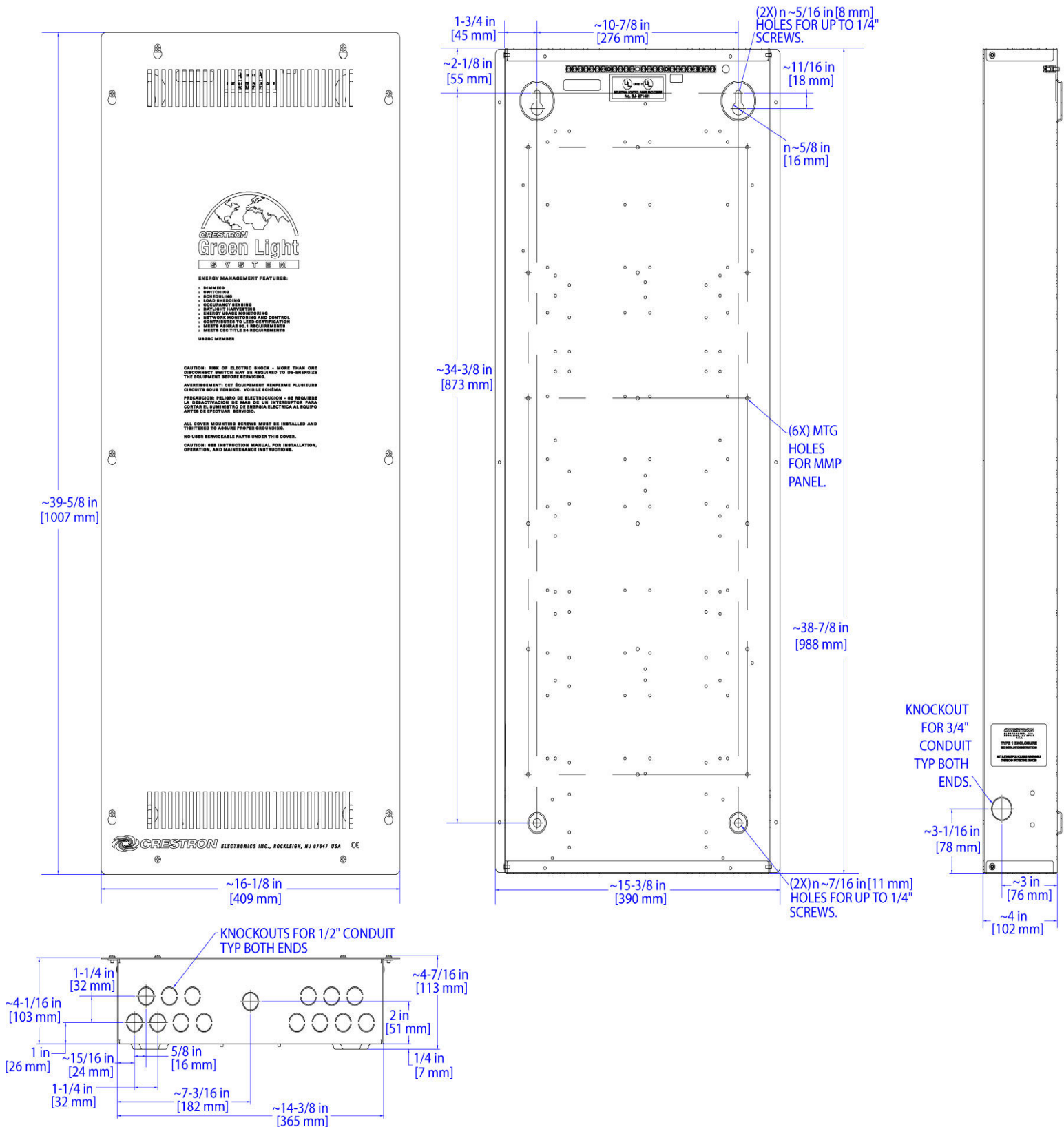


# GLPX

## Green Light Express® Dimming and Switching Panels

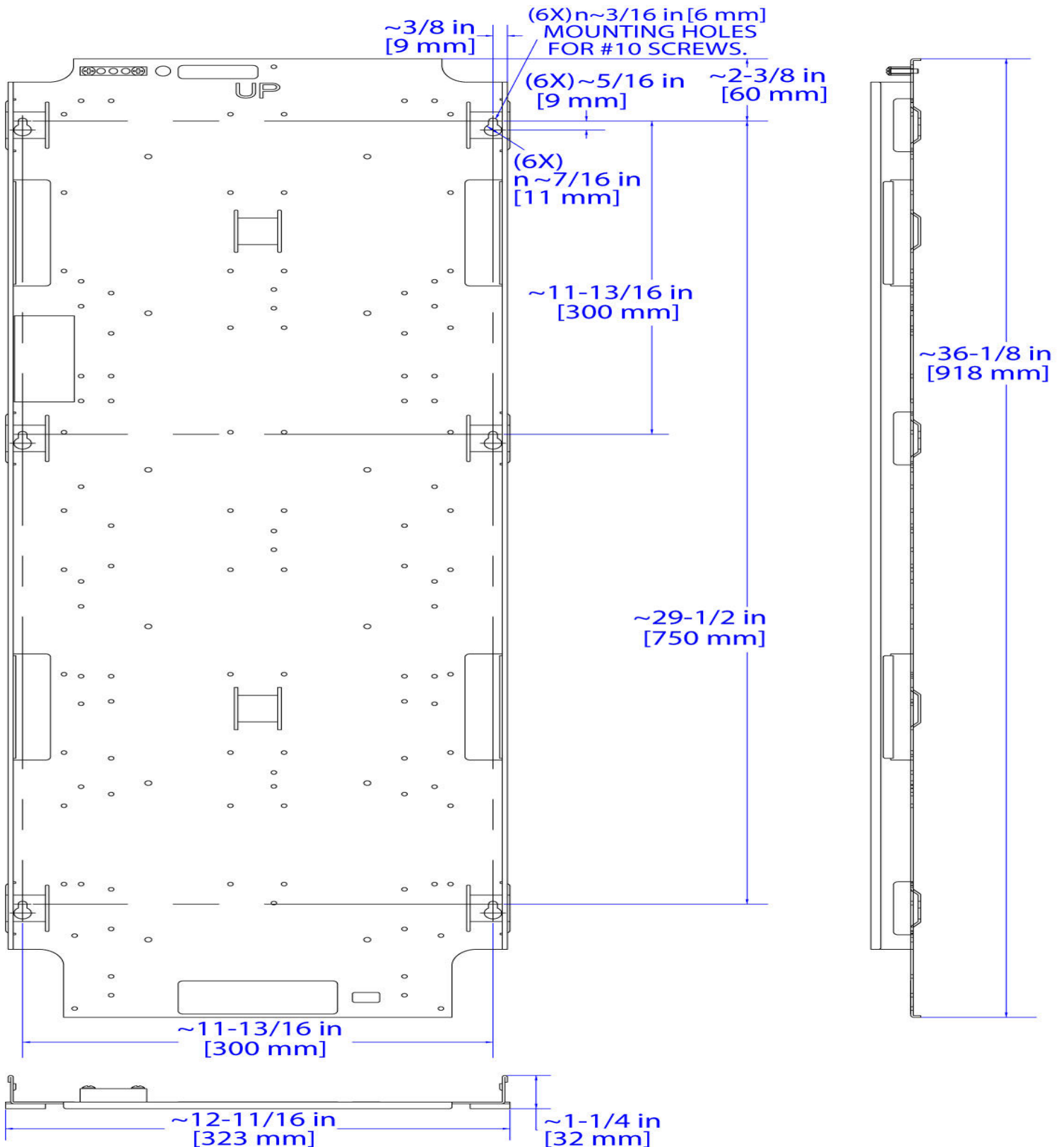


## Green Light Express® Dimming and Switching Panels



# GLPX

## Green Light Express® Dimming and Switching Panels



# GLPX

## Green Light Express® Dimming and Switching Panels

