

caracole



LADY SLIPPER

uph-418-031-a

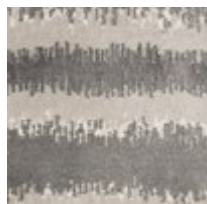
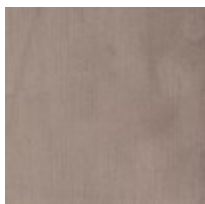
COLLECTION: CARACOLE UPHOLSTERY

DIMENSIONS: 28W x 32.25D x 33.5H

Exquisitely graceful and subtly feminine, this well-dressed slipper chair always elicits a smile. Upholstered in a luxe plum grey fabric, it boasts an unexpected scalloped detail inset along its outside back. This stylish inset feature is upholstered in a striped tri-tone velvet and adds one-of-a-kind character. Perfectly proportioned to fit nearly any space, it also wears a band of nailhead trim that artfully outlines its shapely base and seat cushion.

CONSTRUCTION: Plush poly foam cushion. | 8-Way hand tied seat.

FABRIC:



Body Fabric: All over except outback detail 2599-74CC	Outback detail 8276-89CC
---	-----------------------------