

VALIANCE®

by



HOSHIZAKI

Parts List

VF2A-FS

TABLE OF CONTENTS

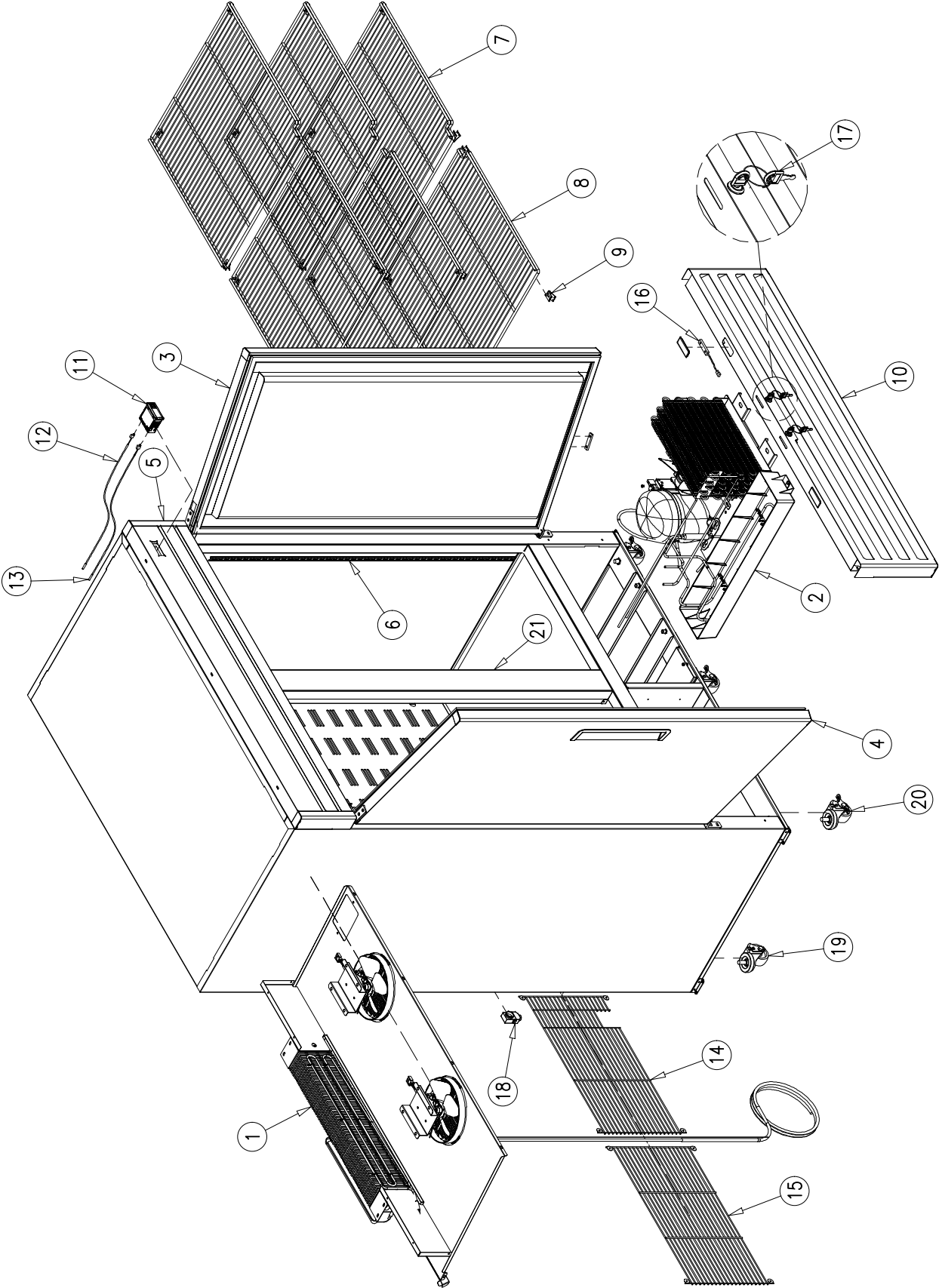
| | |
|--------------------------------|----|
| MAIN ASSEMBLY | 3 |
| EVAPORATOR ASSEMBLY | 5 |
| CONDENSING UNIT ASSEMBLY | 7 |
| DOOR ASSEMBLY | 9 |
| LIGHTING SYSTEM | 11 |

NOTE:

To order spare parts, always include the following information:

- *Model Number* _____
- *Serial Number* _____

MAIN ASSEMBLY



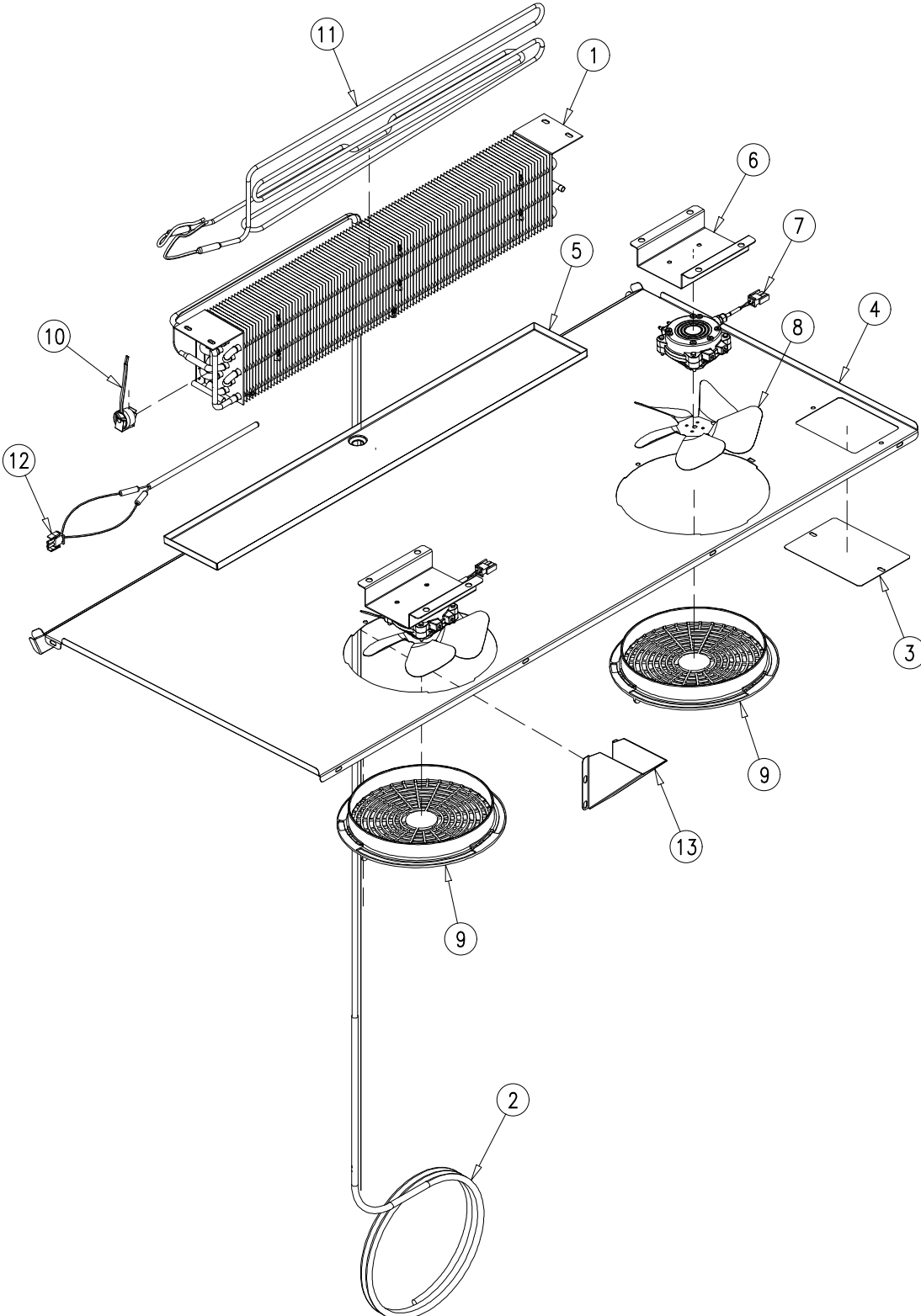
VF2A-FS

MAIN ASSEMBLY

| <i>Item No.</i> | <i>Description</i> | <i>Part No.</i> | <i>Quantity per cooler</i> |
|-----------------|--------------------------|------------------|----------------------------|
| 1 | EVAPORATOR ASSEMBLY | OT-EV-0215 | 1 |
| 2 | CONDENSING UNIT ASSEMBLY | OT-UN-0545 | 1 |
| 3 | RIGHT DOOR ASSEMBLY | OT-PTA-0422-R | 1 |
| 4 | LEFT DOOR ASSEMBLY | OT-PTA-0422-L | 1 |
| 5 | HEADER SIGN | OT-RT-0495 | 1 |
| 6 | PILASTER 48" | PI-74-48 | 8 |
| 7 | RIGHT FLAT SHELF | SH-0626-D-HD-GR | 3 |
| 8 | LEFT FLAT SHELF | SH-0626-I-HD-GR | 3 |
| 9 | SHELF CLIPS | CL-51-SS-E | 24 |
| 10 | FRONT GRILL | OT-CM-0657 | 1 |
| 11 | CONTROL MODULE | CT-209-CO-385-K* | 1 |
| 12 | CABINET THERMISTOR | CT-207-BK | 1 |
| 13 | DEFROST THERMISTOR | CT-207-WH | 1 |
| 14 | RIGHT BACK GRILL | SH-0562-G-GR | 1 |
| 15 | LEFT BACK GRILL | SH-0563-G-GR | 1 |
| 16 | DOOR SWITCH | EL-306 | 2 |
| 17 | LOCK AND KEY SET | HA-471-G-K | 2 |
| 18 | PRESSURE RELIEF VALVE | VA-110 | 1 |
| 19 | BACK NON-LOCKING CASTER | CA-4 | 3 |
| 20 | FRONT LOCKING CASTER | CA-4-BR | 3 |
| 21 | MULLION | MULLION-0161 | 1 |

* THE PART NUMBER CT-209-CO-385-K INCLUDES:
CONTROL MODULE CT-209-CO-385
CABINET THERMISTOR CT-207-BK
DEFROST THERMISTOR CT-207-WH

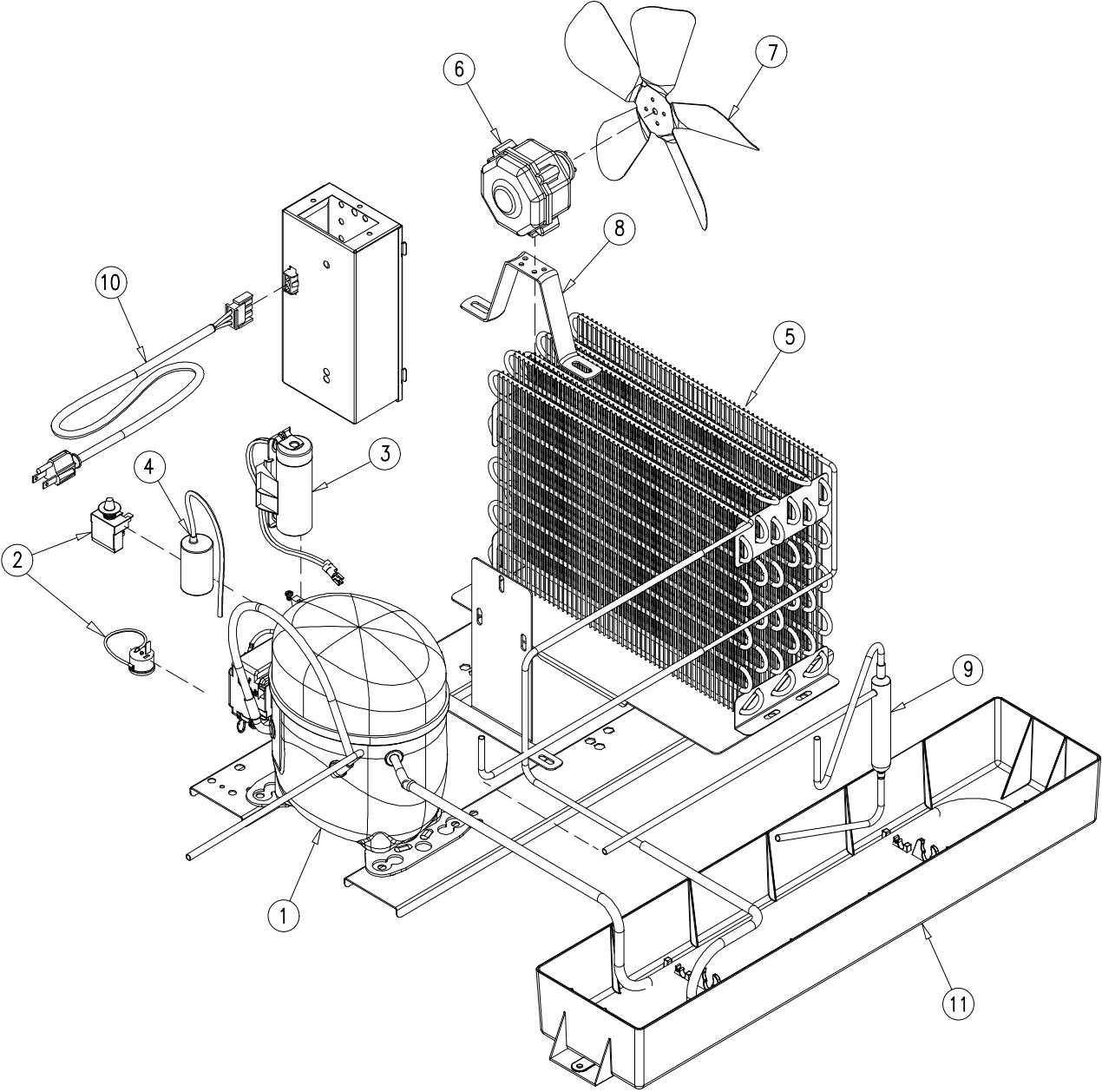
EVAPORATOR ASSEMBLY



EVAPORATOR ASSEMBLY

| <i>Item No.</i> | <i>Description</i> | <i>Part No.</i> | <i>Quantity per cooler</i> |
|-----------------|------------------------------|-----------------|--------------------------------|
| 1 | EVAPORATOR | CO-469-EC | 1 |
| 2 | HEAT EXCHANGER | TUB-1152 | 1 |
| 3 | SHROUD COVER | OT-10442 | 1 |
| 4 | SHROUD | OT-26954 | 1 |
| 5 | EVAPORATOR DRAIN PAN | OT-26957 | 1 |
| 6 | EVAPORATOR FAN MOTOR BRACKET | OT-26961 | 2 |
| 7 | EVAPORATOR FAN MOTOR | FA-124-SW-0396 | 2 |
| 8 | EVAPORATOR FAN BLADE | FA-17-EBM | 2 |
| 9 | FAN GUARD | FA-123-B-GR | 2 |
| 10 | DEFROST SAFETY THERMOSTAT | OT-CT-11-R-EM | 1 |
| 11 | DEFROST HEATER | EL-240-D-469 | 1 |
| 12 | DRAIN HEATER | EL-851-V1 | 1 |
| 13 | DRAIN HOSE COVER | OT-26893 | 1 |

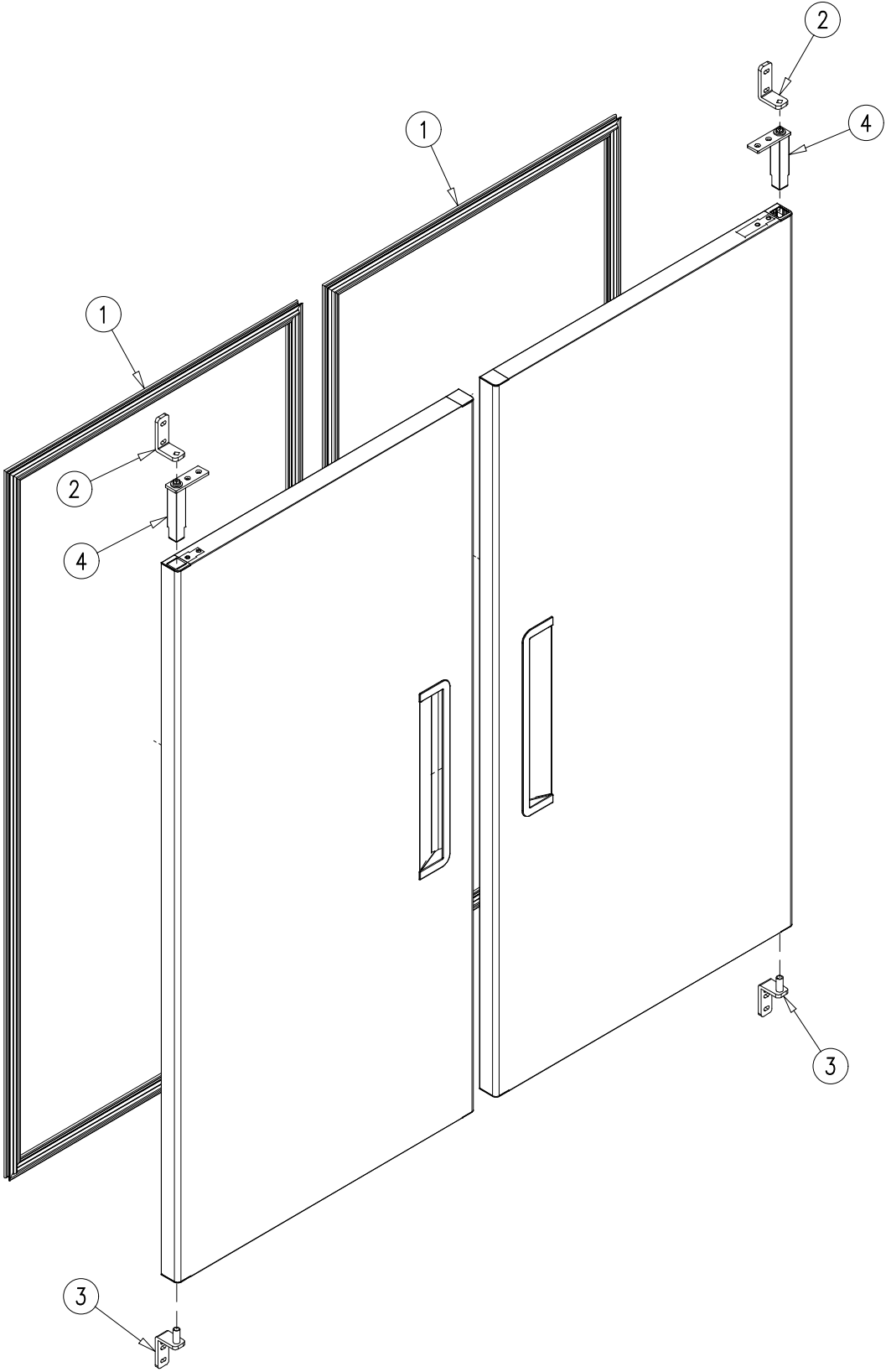
CONDENSING UNIT ASSEMBLY



CONDENSING UNIT ASSEMBLY

| <i>Item No.</i> | <i>Description</i> | <i>Part No.</i> | <i>Quantity per cooler</i> |
|-----------------|---|-------------------|--------------------------------|
| 1 | COMPRESSOR (1/2HP 115-127V/60HZ R-290) | NPT16LR | 1 |
| 2 | EXTERNAL PROTECTOR (T0534) & PTC RELAY (2014 191) | EL-2193-R | 1 |
| 3 | START CAPACITOR (200 μ F 160V) | CAP-200-160 | 1 |
| 4 | RUN CAPACITOR (30 μ F 250V) | CAP-30-250 | 1 |
| 5 | CONDENSER | CO-454-L | 1 |
| 6 | CONDENSER FAN MOTOR | FA-122-SW-35-0396 | 1 |
| 7 | CONDENSER FAN BLADE | FA-11-WE | 1 |
| 8 | CONDENSER FAN MOTOR BRACKET | FA-18 | 1 |
| 9 | DRIER | DR-31-2 | 1 |
| 10 | POWER CORD (9 ft) | EL-1260-9 | 1 |
| 11 | OVERFLOW DRAIN PAN | OT-IN-0032 | 1 |

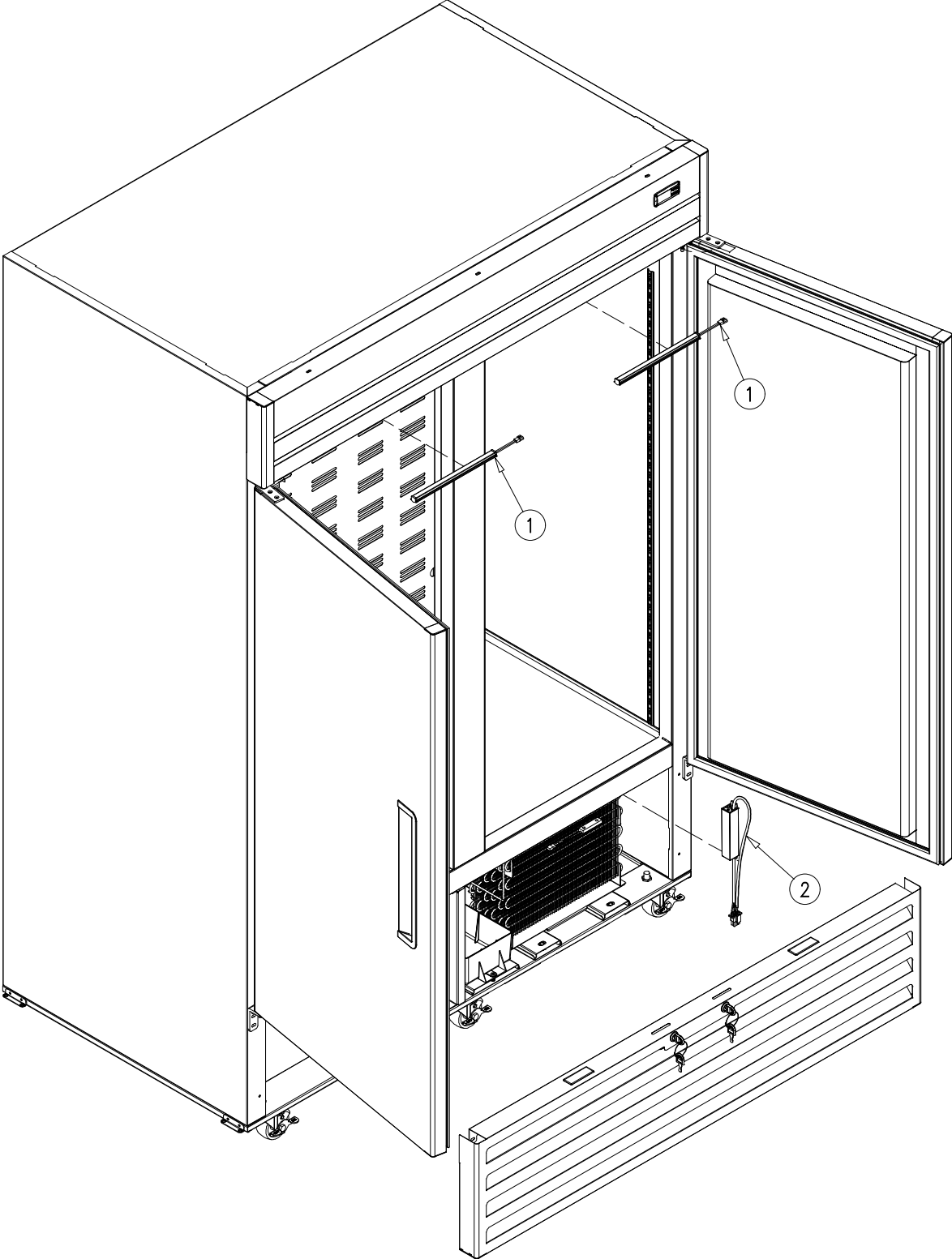
DOOR ASSEMBLY



DOOR ASSEMBLY

| <i>Item No.</i> | <i>Description</i> | <i>Part No.</i> | <i>Quantity per cooler</i> |
|-----------------|----------------------|--------------------|----------------------------|
| 1 | MAGNETIC GASKET | OT-GA-500-PTA-0422 | 2 |
| 2 | UPPER HINGE ASSEMBLY | HA-686-K | 2 |
| 3 | LOWER HINGE ASSEMBLY | HA-536-R-K | 2 |
| 4 | TORSION MECHANISM | HA-612 | 2 |

LIGHTING SYSTEM



LIGHTING SYSTEM

| <i>Item No.</i> | <i>Description</i> | <i>Part No.</i> | <i>Quantity per cooler</i> |
|-----------------|-------------------------|-----------------|----------------------------|
| 1 | LED LAMP STRIP (9 3/4") | EL-145 | 2 |
| 2 | LED DRIVER (1.25 Amp.) | OT-EL-151-T | 1 |