

Fully Integrated 30" Refrigerator

K 1813 Vi / K 1803 Vi



Fully Integrated 30" Refrigerator

K 1813 Vi / K 1803 Vi



Features:

- MasterCool controls
- ClearView lighting system
- Drop and Lock Shelves
- SmartFresh storage drawers
- FullView storage drawers
- RemoteVision capable
- Acoustic door and temperature alarm
- Optical door and temperature alarm
- Energy Star

SPECIFICATIONS

K 1803 Vi — Item 36180301USA - Right Hinged

K 1813 Vi — Item 36181301USA - Left Hinged

Overall Unit Width 29³/₄" (755 mm)

Overall Unit Height 83¹/₂" - 85³/₁₆" (2121 mm - 2165 mm)

Overall Unit Depth 24" (610 mm)

Niche

Minimum Cabinet Opening Width 30" (762 mm)

Minimum Cabinet Opening Height 83⁵/₈" (2124 mm)

Minimum Cabinet Opening Depth 25" (635 mm)*

Electrical

Electrical Requirements - Volts/Amps 110V / 120V, 60Hz, 15 Amps
In the case of side-by-side installations, a separate outlet must be used for each appliance.

Power Cord - Plug and length Yes - NEMA 5-15 plug, 5 ft (1.52 m)

Custom Panel

Please refer to the manual for further details.

Maximum Panel Weight 110 lbs (50 kg)

Maximum Panel Thickness 1¹/₂" (38 mm)

Minimum Panel Thickness ³/₄" (19 mm)

Shipping

Shipping Weight 470.7 lbs (213.5 kg)

Shipping Dimensions 33⁵/₈" W x 89¹³/₁₆" H x 29¹/₄" D

Support

Call Miele 800.843.7231

Miele Website www.mieleusa.com

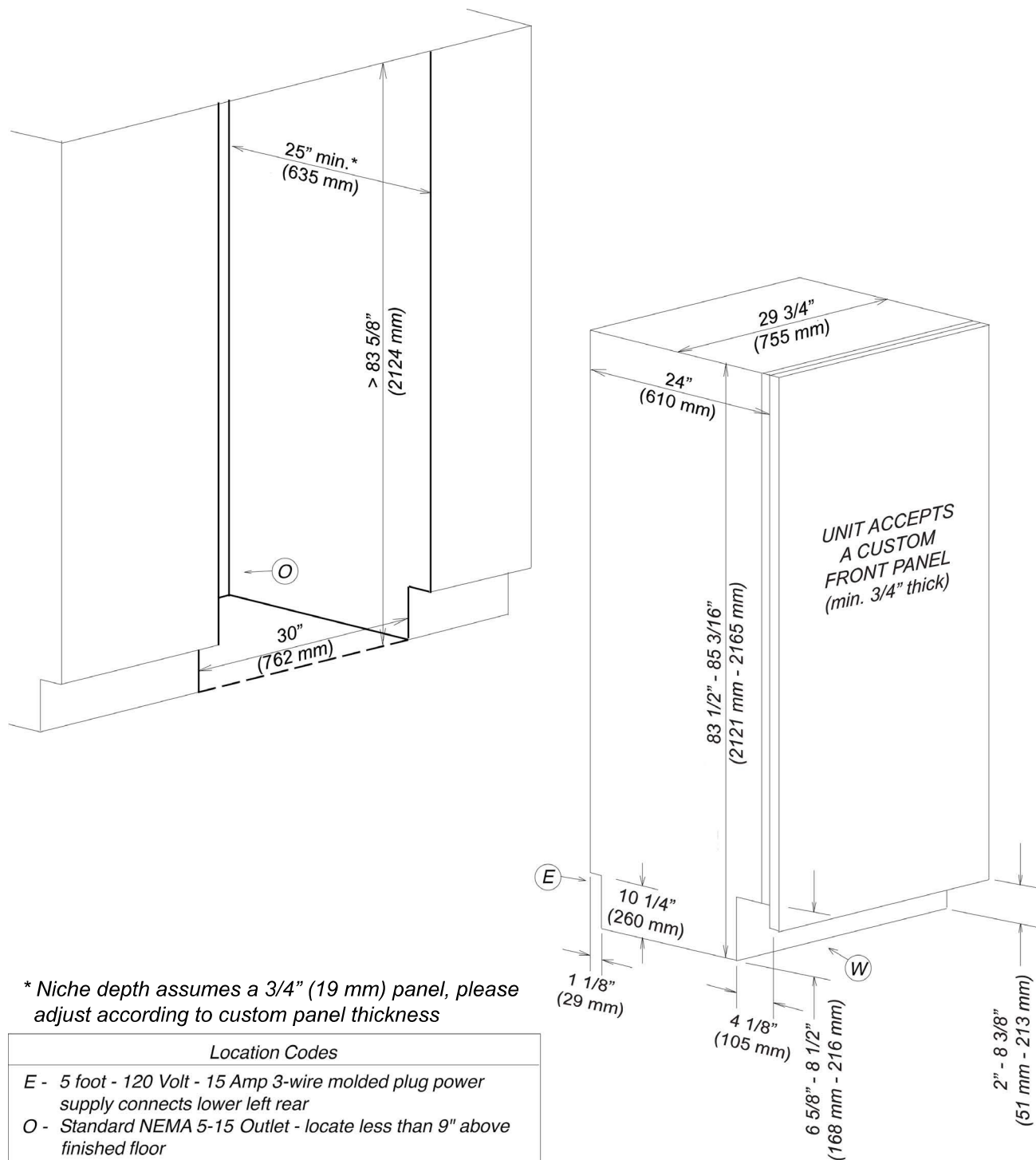
20/20 Link 2020technologies.com

Fully Integrated 30" Refrigerator

K 1813 Vi / K 1803 Vi

Miele

FOR FLUSH INSTALLATION



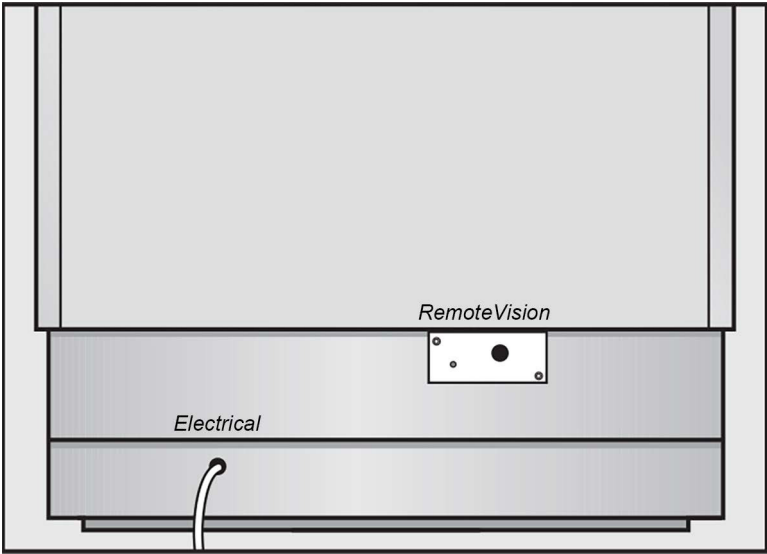
Location Codes
E - 5 foot - 120 Volt - 15 Amp 3-wire molded plug power supply connects lower left rear
O - Standard NEMA 5-15 Outlet - locate less than 9" above finished floor
Notes
<ul style="list-style-type: none"> • All Installations must be done in accordance with local codes • Sides of adjoining cabinets should be filled (flush to frame) to insure proper fit and finish • For Proud Installation - please adjust accordingly

Fully Integrated 30" Refrigerator

K 1813 Vi / K 1803 Vi

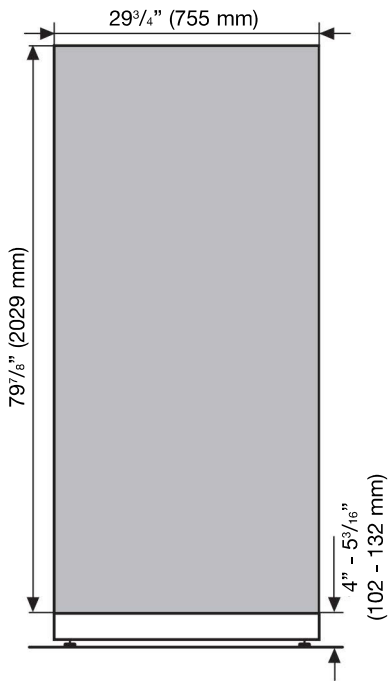


POWER SUPPLY CONNECTION BACK VIEW



Electrical - 5 foot (1.52 m) - 120 Volt - 15 Amp - NEMA 5-15 molded plug

SS DOOR PANEL DIMENSIONS



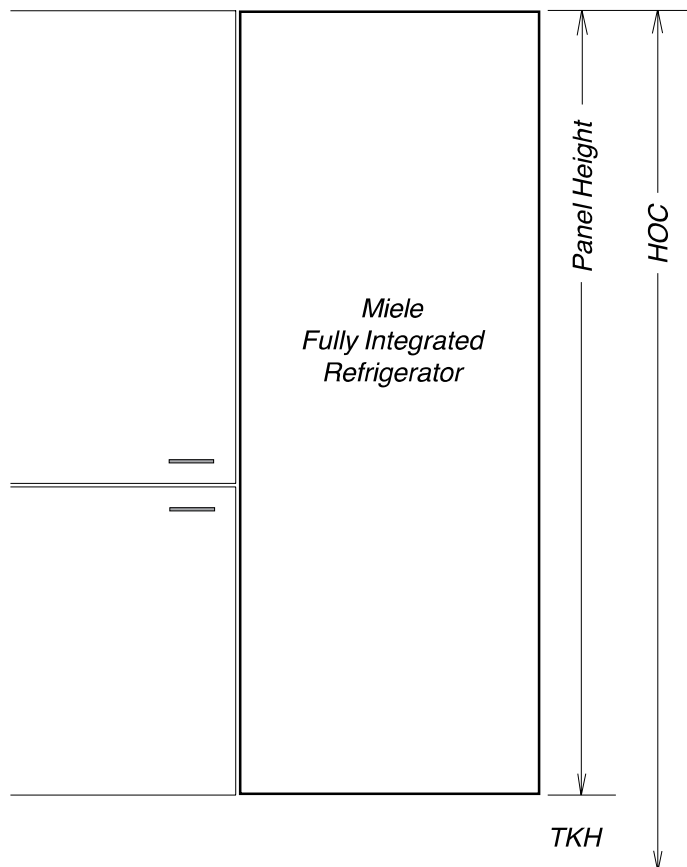
Fully Integrated 30" Refrigerator K 1813 Vi / K 1803 Vi



CUSTOM PANEL INSTALLATIONS

These units do not come equipped with a front panel. They are designed to accept a custom door panel supplied by the cabinet maker. Miele has a unique panel integration system which allows the panels to align with the surrounding cabinets.

Panel size is determined in the following manner:



Width: 29 3/4" (755 mm) in all cases

Thickness: Minimum 3/4" (19 mm) outside frame

Height: Determined using the following calculation:

$$\text{Panel Height} = \text{HOC} - \text{TKH}$$

HOC = Total height of cabinet or side panel

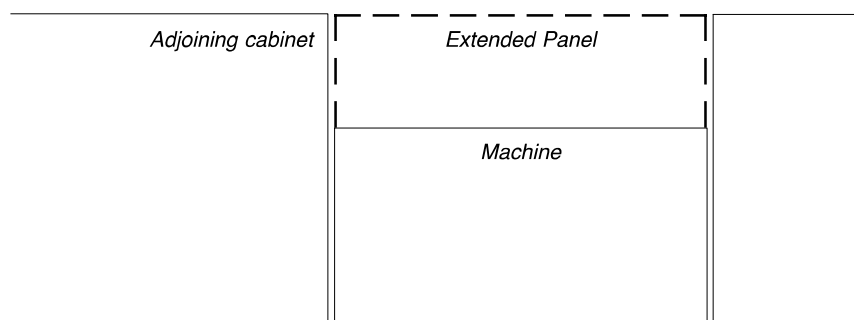
TKH = Toe-kick height

Note: Finish back side of panels to insure appearance
Panel may extend above unit. This is **not** considered in height calculation

Maximum panel weight: 110 Pounds

Panel Notes

If the adjoining cabinets are taller than the height of machine (HOM) - the front panel may be extended accordingly. Simply maintain the toekick height and extend the panel the needed distance.



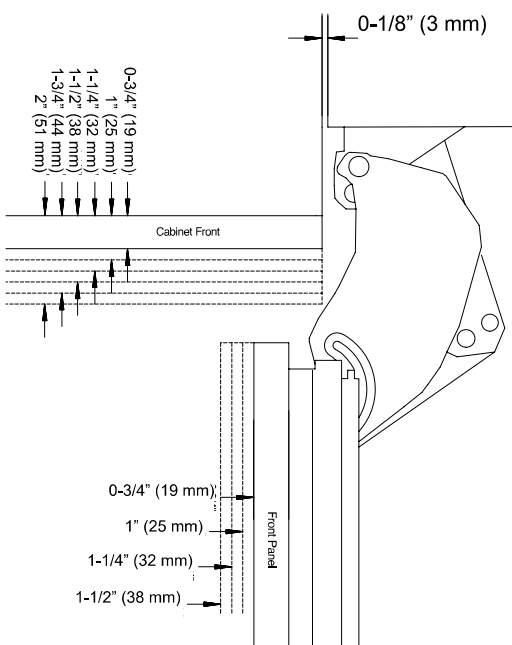
Fully Integrated 30" Refrigerator K 1813 Vi / K 1803 Vi



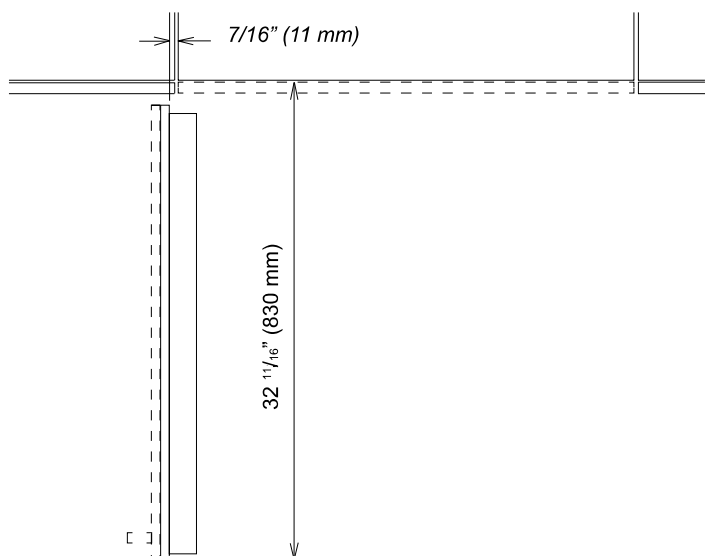
HINGING DETAILS

90° Door

Thickness options



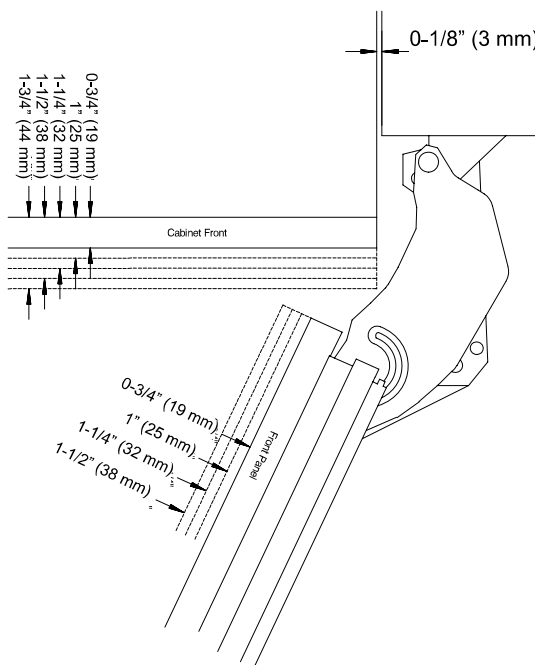
Door Swing



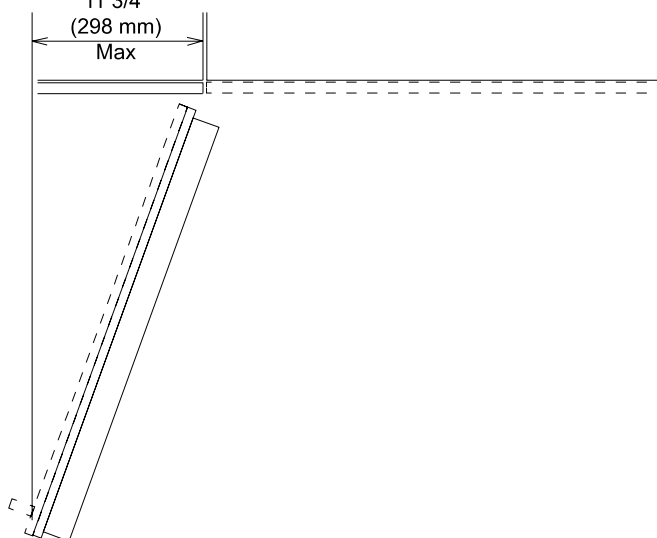
NOTE: Additional space needed depending on thickness of front panels and handle used

115° Door

Thickness options



Door Swing

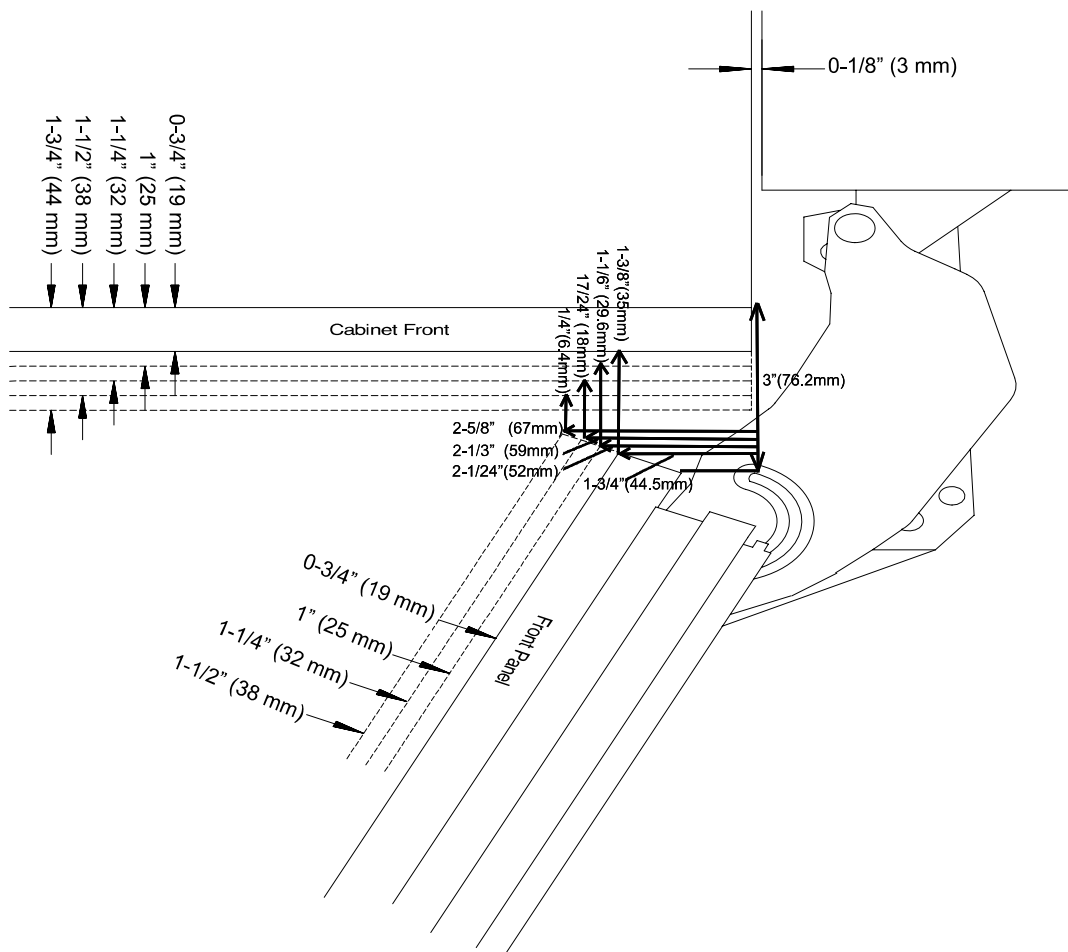


NOTE: Additional space needed depending on thickness of front panels and handle used

Fully Integrated 30" Refrigerator K 1813 Vi / K 1803 Vi



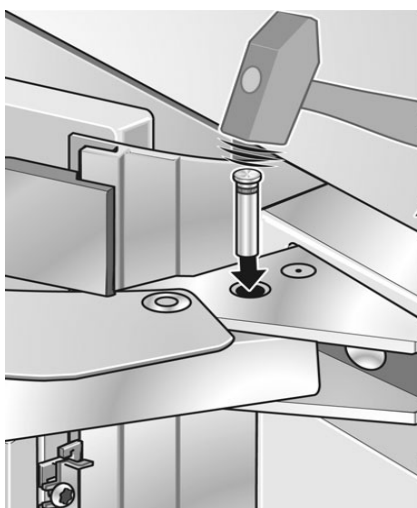
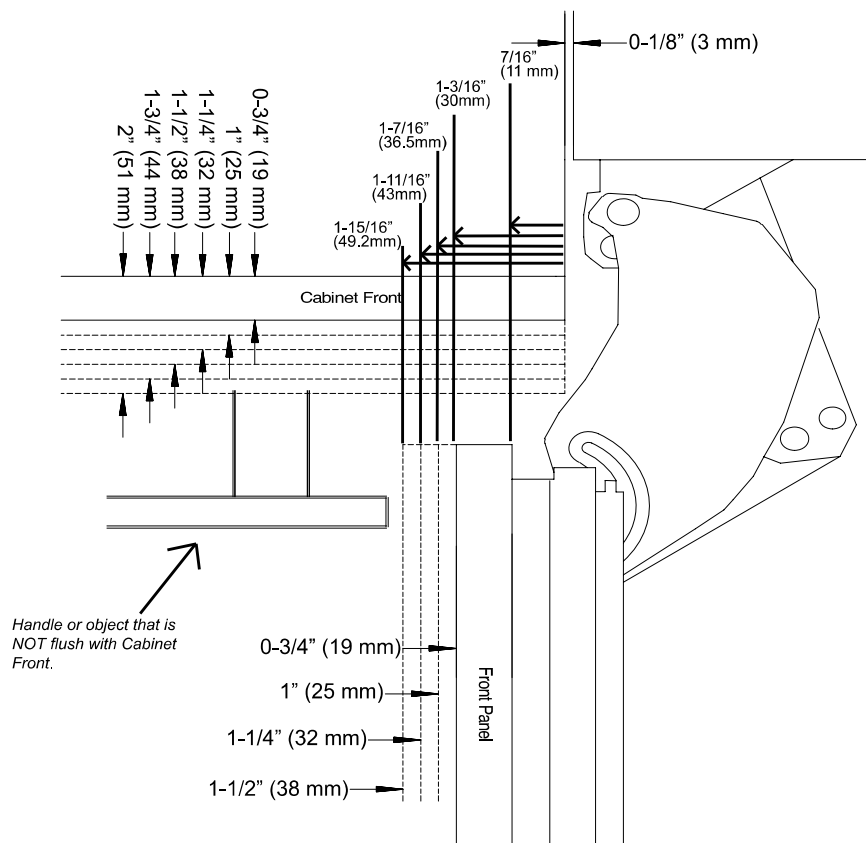
HINGING DETAILS 115° OPENING



Fully Integrated 30" Refrigerator K 1813 Vi / K 1803 Vi



HINGING DETAILS 90° OPEING



When installing hinge side next to an appliance or object that is within range of the door panel, limit the door opening angle to 90°. This is done by installing the banking pin as illustrated. Insert the banking pin through the holes and drive in with a hammer.