

# ASSEMBLY INSTRUCTION

Item No : GW-BS-689-RBC-K24

GW-BS-689-RWC-K24

Description : LADDER BACK BARSTOOL



## IMPORTANT NOTE :

- Place all wooden parts on a clean and smooth surface such as a rug or carpet to avoid the parts from being scratched.
- Check to be sure that you have all parts and hardware.
- Remove all wrapping materials, including staples & packing straps before you start to assemble.
- Do not tighten all screws / bolts until all completely assembled.
- Keep all hardware parts out of reach of children.

EACH CHAIR

## COMPONENT LIST

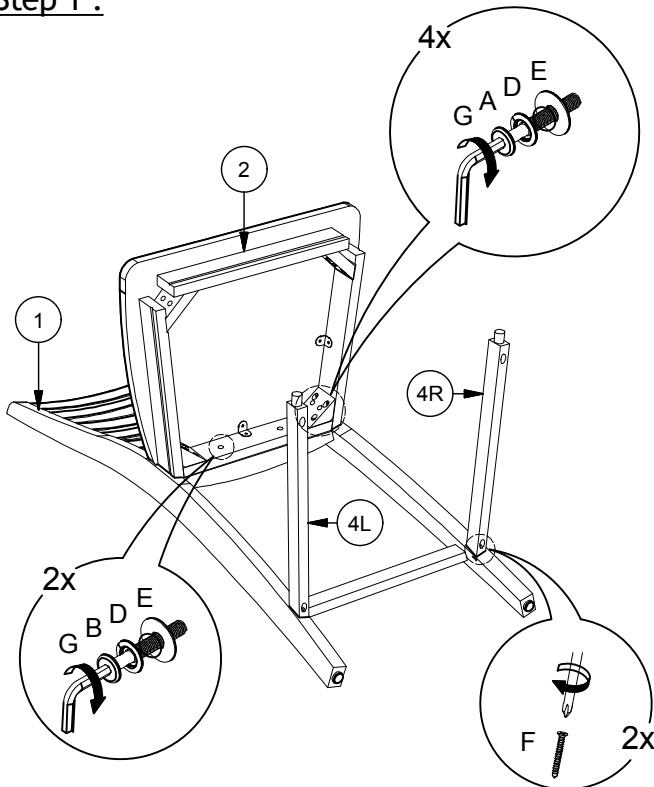
NO	DESCRIPTION	QTY
1	BACK REST	1 PC
2	BOX FRAME WITH SEAT	1 PC
3	FRONT LEG (L&R)	2 PCS
4	SIDE STRETCHER (L&R)	2 PCS
5	FRONT STRETCHER	1 PC

## HARDWARE LIST

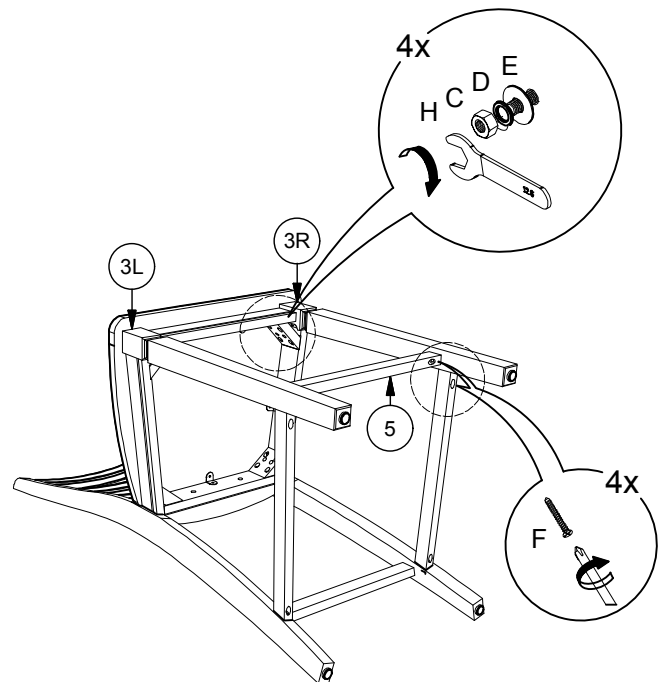
NO	DESCRIPTION	QTY
A	JCBC SCREW M6 x 80mm	4 PCS
B	JCBC SCREW M6 x 40mm	2 PCS
C	HEXAGON NUT 5/16"	4 PCS
D	SPRING WASHER 5/16"	10 PCS
E	FLAT WASHER 5/16"x 22mm	10 PCS
F	CSK SCREW M4 x 38mm	6 PCS
G	ALLEN KEY M4	1 PC
H	WRENCH 12.8	1 PC

NOTE : YOU WILL ALSO NEED A PHILIP SCREW DRIVER (NOT PROVIDED)

### Step 1 :



### Step 2 :



# ASSEMBLY INSTRUCTION

Item No : GW-CH-689-RBC-RTA

GW-CH-689-RWC-RTA

Description : LADDER BACK CHAIR



## IMPORTANT NOTE :

- Place all wooden parts on a clean and smooth surface such as a rug or carpet to avoid the parts from being scratched.
- Check to be sure that you have all parts and hardware.
- Remove all wrapping materials, including staples & packing straps before you start to assemble.
- Do not tighten all screws / bolts until all completely assembled.
- Keep all hardware parts out of reach of children.

EACH CHAIR

## COMPONENT LIST

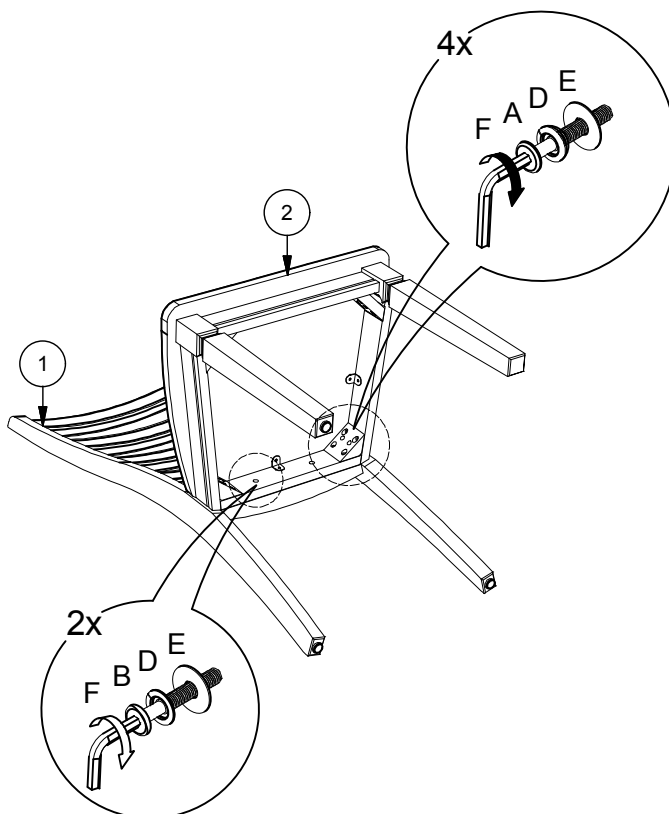
NO	DESCRIPTION	QTY
1	BACK REST	1 PC
2	BOX FRAME WITH SEAT	1 PC
3	FRONT LEG (L&R)	2 PCS

## HARDWARE LIST

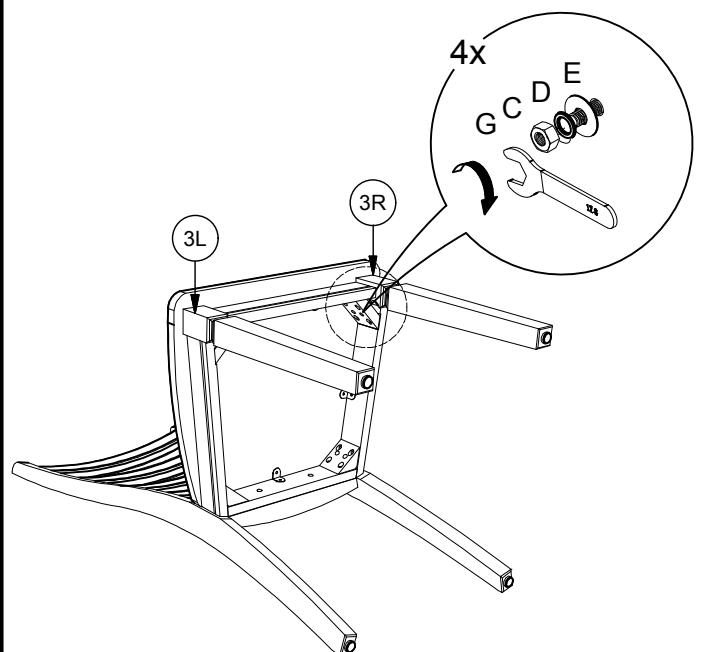
NO	DESCRIPTION	QTY
A	JCBC SCREW M6 x 80mm	4 PCS
B	JCBC SCREW M6 x 40mm	2 PCS
C	HEXAGON NUT 5/16"	4 PCS
D	SPRING WASHER 5/16"	10 PCS
E	FLAT WASHER 5/16"x 22mm	10 PCS
F	ALLEN KEY M4	1 PC
G	WRENCH 12.8	1 PC

NOTE : YOU WILL ALSO NEED A PHILIP SCREW DRIVER (NOT PROVIDED)

Step 1 :



Step 2 :

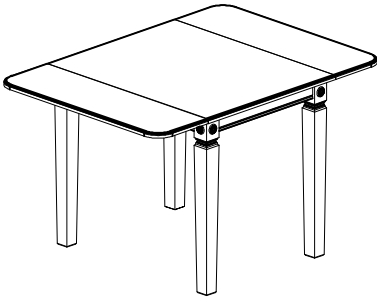


# ASSEMBLY INSTRUCTION

Item No : GW-TA-3650D-RBC-C

GW-TA-3650D-RWC-C

Description : 36" x 28-50" DROP LEAF TABLE



## IMPORTANT NOTE :

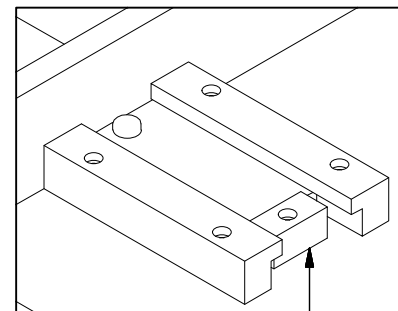
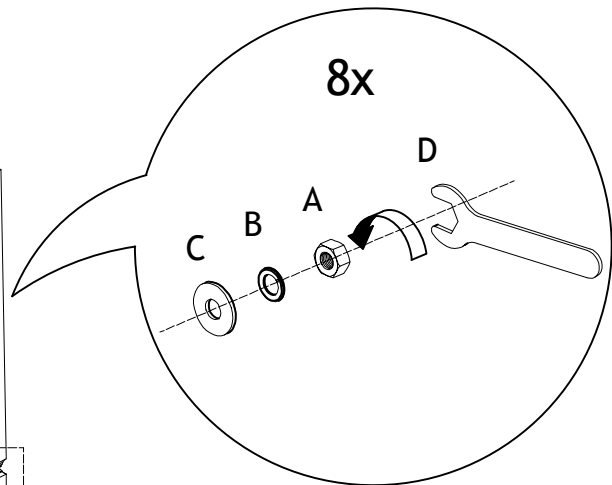
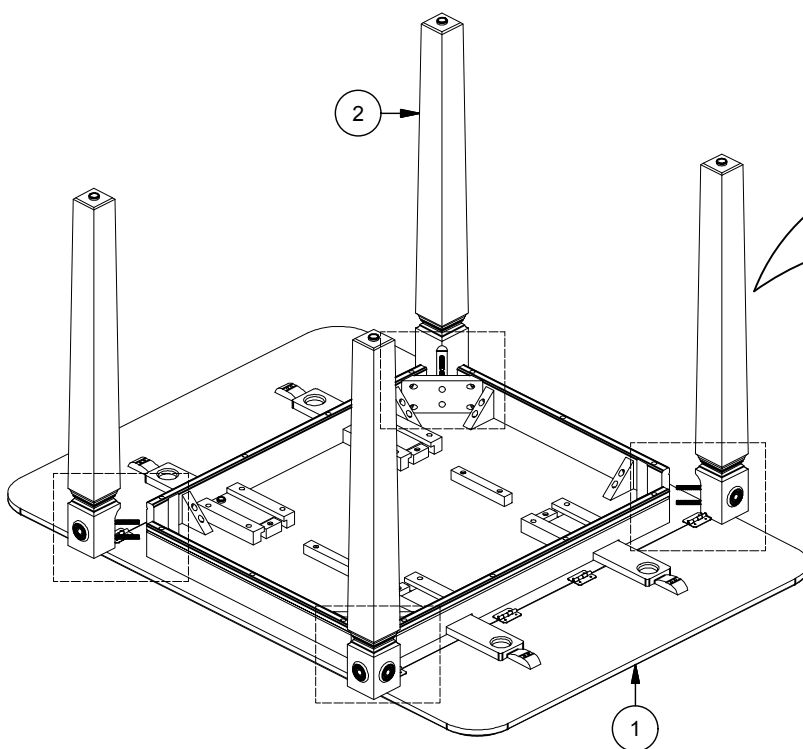
- Place all wooden parts on a clean and smooth surface such as a rug or carpet to avoid the parts from being scratched.
- Check to be sure that you have all parts and hardware.
- Remove all wrapping materials, including staples & packing straps before you start to assemble.
- Do not tighten all screws / bolts until all completely assembled.
- Keep all hardware parts out of reach of children.

### COMPONENT LIST

NO	DESCRIPTION	QTY/PCS
1	TABLE TOP	1 PC
2	TABLE LEG	4 PCS

### HARDWARE LIST

NO	DESCRIPTION	QTY/PCS
A	HEX NUT 5/16"	8 PCS
B	SPRING WASHER 5/16"	8 PCS
C	FLAT WASHER 5/16" x 22	8 PCS
D	WRENCH 12.8	1 PC



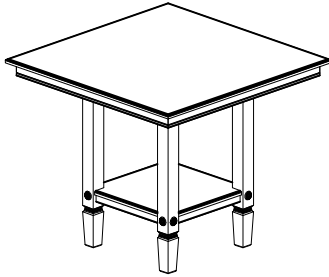
Remove The Wood Labelled "DISCARD"  
After The Table Completed Assembly.

# ASSEMBLY INSTRUCTION

Item No : GW-TA-4242G-RBC-C

GW-TA-4242G-RWC-C

Description : 42" SQUARE GATHERING TABLE



## IMPORTANT NOTE :

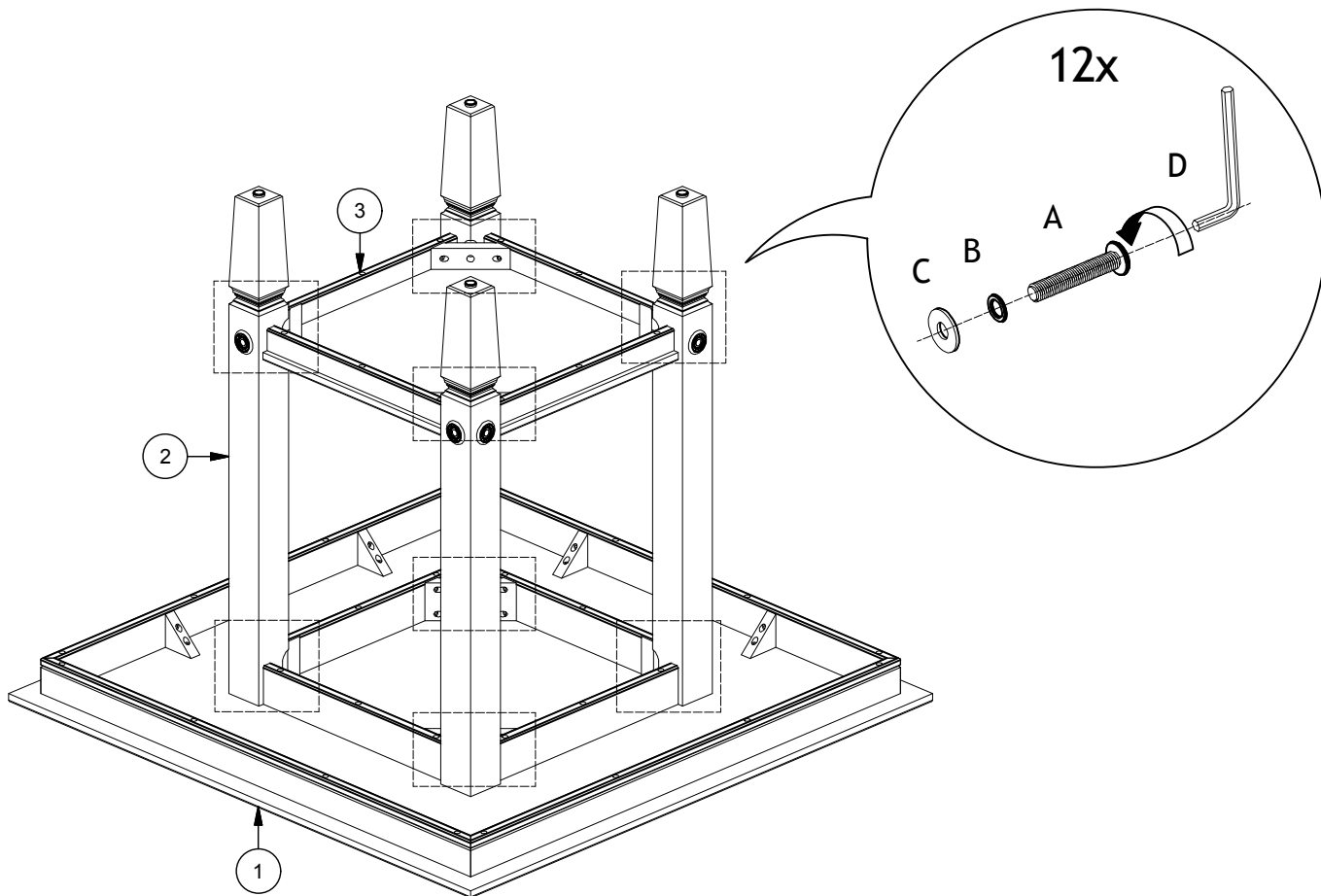
- Place all wooden parts on a clean and smooth surface such as a rug or carpet to avoid the parts from being scratched.
- Check to be sure that you have all parts and hardware.
- Remove all wrapping materials, including staples & packing straps before you start to assemble.
- Do not tighten all screws / bolts until all completely assembled.
- Keep all hardware parts out of reach of children.

### COMPONENT LIST

NO	DESCRIPTION	QTY/PCS
1	TABLE TOP	1 PC
2	TABLE LEG	4 PCS
3	SHELF	1 PC

### HARDWARE LIST

NO	DESCRIPTION	QTY/PCS
A	JCBB SCREW M8 x 50	12 PCS
B	SPRING WASHER 5/16"	12 PCS
C	FLAT WASHER 5/16" x 22	12 PCS
D	ALLEN KEY M5	1 PC

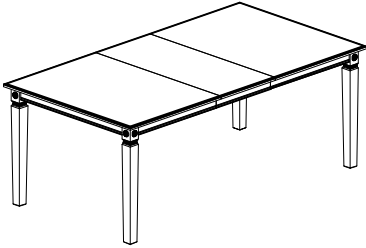


# ASSEMBLY INSTRUCTION

Item No : GW-TA-4278-RBC-C

GW-TA-4278-RWC-C

Description : 42" x 60" x 78" DINING TABLE



## IMPORTANT NOTE :

- Place all wooden parts on a clean and smooth surface such as a rug or carpet to avoid the parts from being scratched.
- Check to be sure that you have all parts and hardware.
- Remove all wrapping materials, including staples & packing straps before you start to assemble.
- Do not tighten all screws / bolts until all completely assembled.
- Keep all hardware parts out of reach of children.

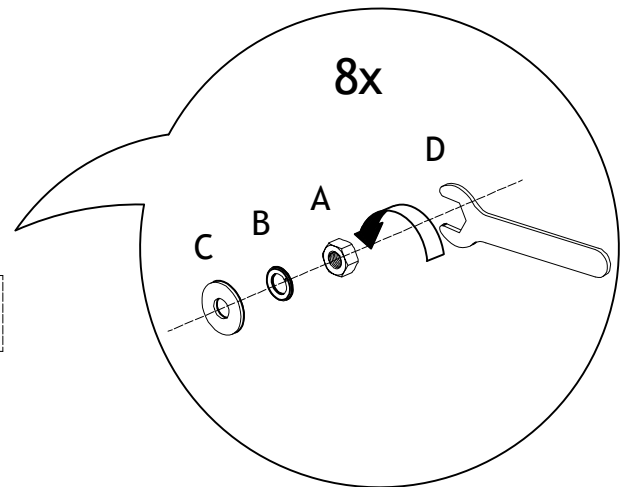
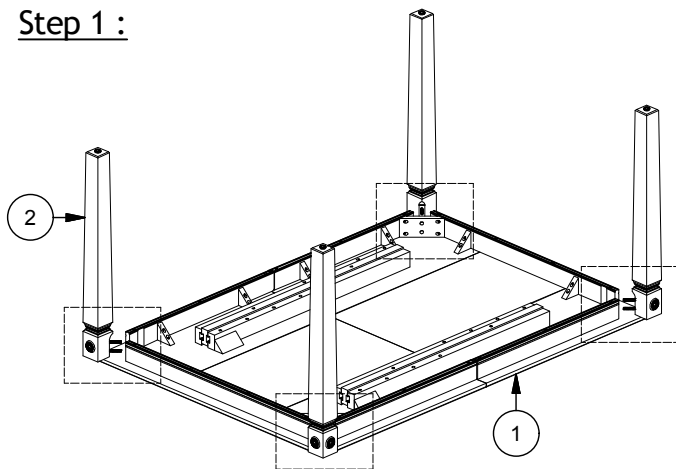
### COMPONENT LIST

NO	DESCRIPTION	QTY/PCS
1	TABLE TOP	1 PC
2	TABLE LEG	4 PCS
3	EXTENSION LEAF	1 PC

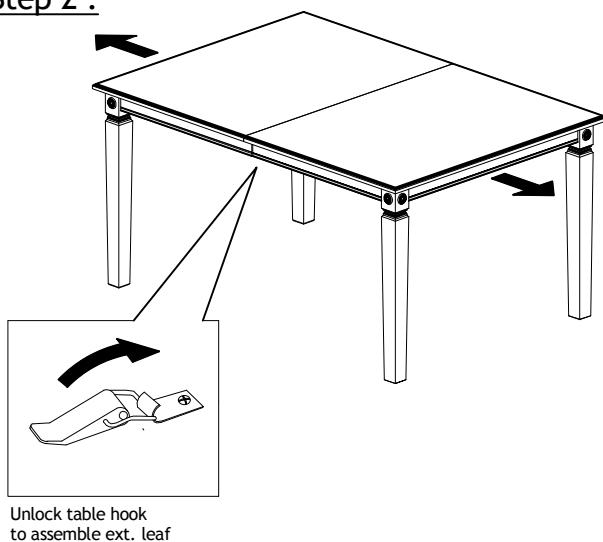
### HARDWARE LIST

NO	DESCRIPTION	QTY/PCS
A	HEX NUT 5/16"	8 PCS
B	SPRING WASHER 5/16"	8 PCS
C	FLAT WASHER 5/16" x 22	8 PCS
D	WRENCH 12.8	1 PC

#### Step 1 :

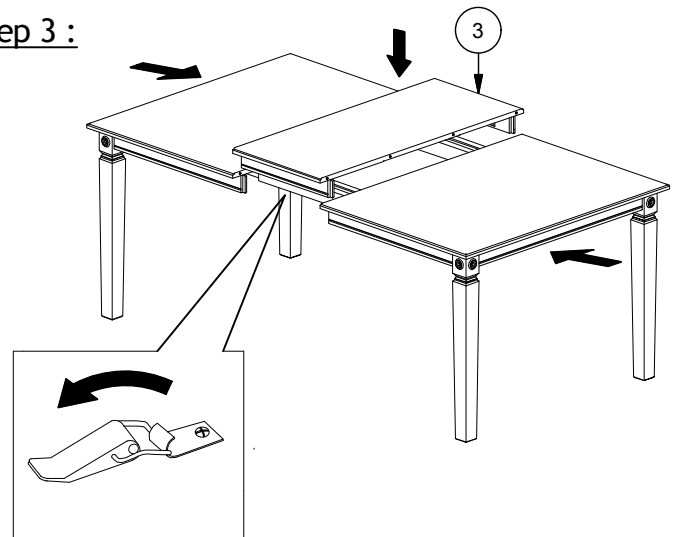


#### Step 2 :



Unlock table hook  
to assemble ext. leaf

#### Step 3 :



Assemble ext. leaf and  
re-lock the table hook.