

VSL 400 SERIES (3, 4, 6, 12) RANGE HOOD LINERS

For those who need ventilation performance and desire the commercial style baffle filters, our VSL 400 Series Liner will exceed your expectations.

VSL400 SERIES

Experience...

REMOTE CONTROL

- Easy to operate
- Optional automatic 5 minute shut off timer



EASY CLEANING

- Dishwasher safe commercial stainless steel baffle filters
- Leading edge design is easy to clean. Eliminates grease traps
- No unsightly screws to clean around.

QUIET OPERATION

- Rubber-mounted motor & large, squirrel-cage blowers reduce sound and vibration noise (390 CFM, 600 CFM, 1200 CFM models)
- 3-speed motor control reduces blower and air movement sound
- Large, stainless steel baffle filters reduce air movement sound

ENDURING QUALITY

- Internal motor models deliver 390 CFM, 600 CFM or 1200 CFM (390 CFM is Code Compliant)
- Commercial grade stainless steel (#304 grade with #4 brush finish) and galvanized steel construction
- Oversized stainless steel baffle filters improve ventilation performance
- Two LED lights brighten cooking area; three on 448, 454 & 460 models
- Performance tested by Energy Systems Laboratory at Texas A&M University

DISTINCTIVE LOW PROFILE DESIGN

- Style complements ALL custom and manufactured wood hood designs
- Electronic touch controls with blue LED back lighting, with NEW REMOTE CONTROL
- Simplicity of design preferred by home owners and builders.

EASY INSTALLATION

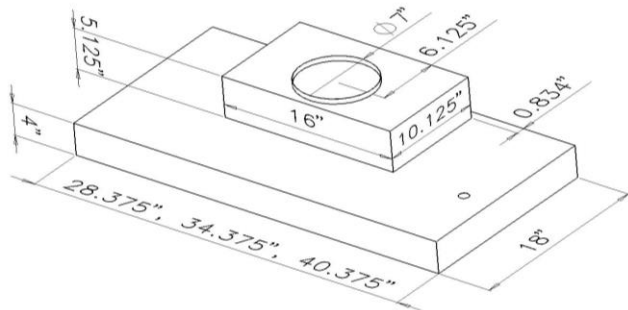
- Remote blower models pre-wired for use with most in-line or exterior blowers
- Installs easily in standard size or custom built wood range hoods
- Wiring diagram label for simple electrical connection

VSL 400 SERIES (3, 4, 6, 12) RANGE HOOD LINERS

Pic	CFM	Models Available (by Width)						Sones	Control	Blower
		28 ³ / ₈ "	34 ³ / ₈ "	40 ³ / ₈ "	46 ³ / ₈ "	52 ³ / ₈ "	58 ³ / ₈ "			
A	390	VSL4303RC	VSL4363RC	VSL4423RC	-	-	-	5	3-Speed	Internal Motor
B	390	VSL4304RC	VSL4364RC	VSL4424RC	-	-	-	7	3-Speed	Internal Motor
C	600	VSL4306RC	VSL4366RC	VSL4426RC	VSL4486RC	-	-	7.5	3-Speed	Internal Motor
D	1200	-	-	VSL44212RC	VSL44812RC	VSL45412RC	VSL46012RC	8.5	3-Speed	Two Internal Motors

**** Drawings C and D are also available in 22" depth. Specify when ordering.**

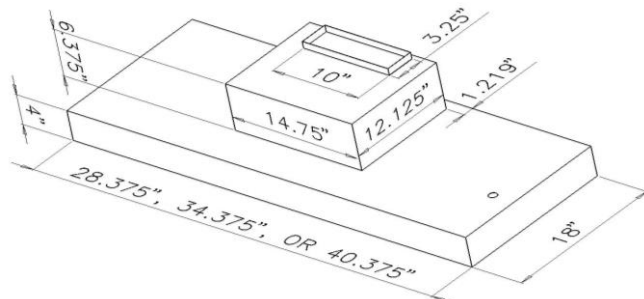
A



Notes:

1. Center of electrical access is 7" from front & 2 ¹/₂" from side of liner. Connection access is behind filters.
2. Vent is centered left to right. Damper is not included.
3. Length & width cutouts should be ¹/₈" larger than above dimensions.

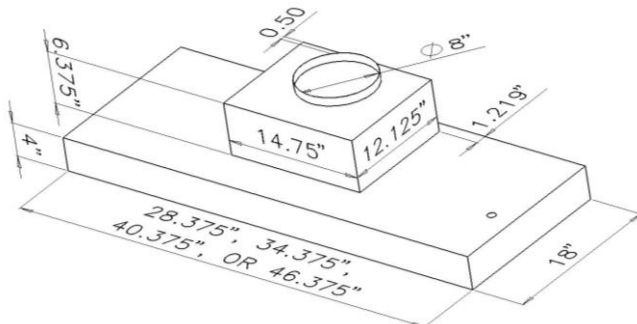
B



Notes:

1. Center of electrical access is 7" from front & 2 ¹/₂" from side of liner. Connection access is behind filters.
2. Vent is centered left to right. Damper is included.
3. Length & width cutouts should be ¹/₈" larger than above dimensions.

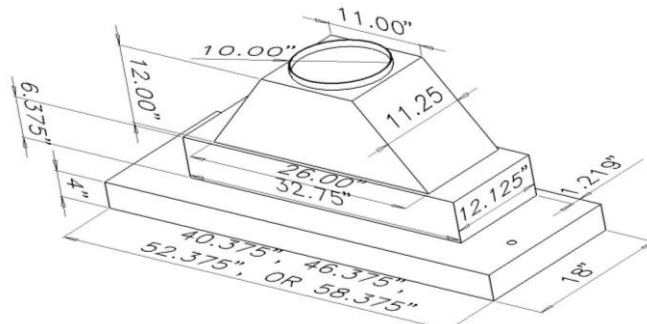
C



Notes:

1. Center of electrical access is 7" from front & 2 ¹/₂" from side of liner. Connection access is behind filters.
2. Damper *not* included.
3. Length & width cutouts should be ¹/₈" larger than above dimensions.

D



Notes:

1. Center of electrical access is 7" from front & 2 ¹/₂" from side of liner. Connection access is behind filters.
2. Damper *not* included.
3. Length & width cutouts should be ¹/₈" larger than above dimensions.

Universal Metal Industries has a policy of continuous improvements and reserves the right to modify (at any time without notice) any or all of its products, features, designs, components and specifications. For further information on installation and wiring, see the installation instructions included with the product or visit us on the web.

For more information please contact your dealer or your Trade-Wind® representative.

**UNIVERSAL
METAL
INDUSTRIES, INC.**
KITCHEN & BATH VENTILATION



MADE IN USA

800 West Grant Street, Phoenix, AZ 85007
800 875-3654 Phone 800 809-0995 Fax
602 251-3654 Phone 602 251-3889 Fax
twphx.com trade-windonline.com umiphx.com



TRADE-WIND

Revised 11/30/17

© Copyright 2017 Universal Metal Industries, Inc.

Proverbs 22:29